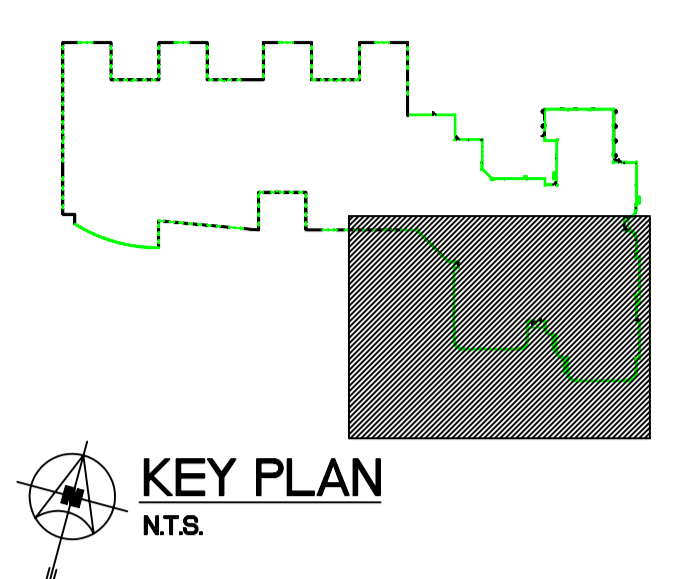
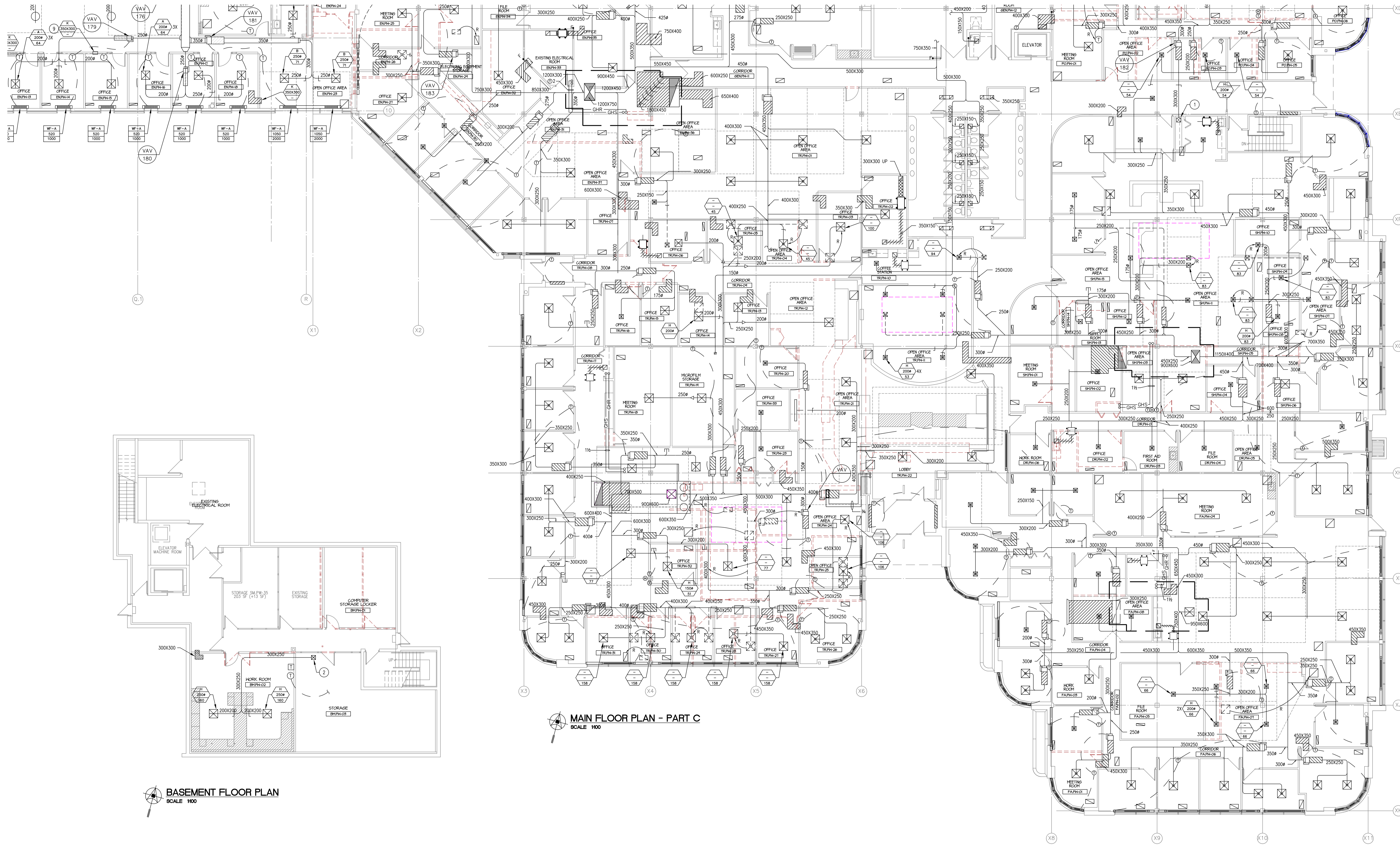


FOR CONTINUATION, REFER TO DRAWING M2.4



- GENERAL NOTES:**
- A. RETURN GRILLES IN ACOUSTIC TILE CEILINGS ARE TO BE 600X150 OR 600X900 AS SHOWN ON PLANS.
 - B. ALL CONTROL VALVES FOR WALL-FIN TO BE LOCATED IN THE CRAWLSPACE (NEW ADDITION ONLY).
 - C. VESTIBULE FAN COOL UNITS TO HAVE FAN CYCLE TO MAINTAIN SET POINT.
 - D. AHU-2, AHU-3 AND AHU-4 TO HAVE 2-WAY CONTROL VALVES ON HEATING COILS. AHU-1 TO HAVE 3-WAY VALVE.
 - E. DIV 15800 TO PROVIDE CONTROL TRANSFORMERS AND WIRING TO DEVICES, DIV 16 TO PROVIDE 120V POWER TO TRANSFORMERS.
 - F. DDC SENSORS ARE TO BE MOUNTED IN EACH OF THE 5 AHU SERVICE CORRIDORS TO MONITOR SPACE CONDITIONS.
 - G. ALL EXPOSED ROUND DUCTWORK TO BE SPIRAL DUCTWORK.

MAIN FLOOR PLAN - PART C
SCALE 1/100

BASEMENT FLOOR PLAN
SCALE 1/100

- DRAWING NOTES:**
- 1. 300X300 SUPPLY DUCT DOWN TO CRAWLSPACE/BASEMENT BELOW.
 - 2. 300X300 SUPPLY DUCT DOWN FROM ABOVE.

Friesen Tokar Architects
200 - 2033 Portage Avenue
Winnipeg, Canada R3J 0K6
Tel. 204.883.9323
Fax. 204.883.7335

DATE: MAY 2004
PROJECT NO: 01716

ISSUED FOR 50% REVIEW FEBRUARY 6, 2004
ISSUED FOR 75% REVIEW MARCH 5, 2004
ISSUED FOR PRETENDER REVIEW APRIL 2004
ISSUED FOR TENDER MAY 14, 2004

SMS ENGINEERING
SMS Engineering Ltd. Consulting Engineers
710 Bannock Street Winnipeg, MB Canada R3B 0Y3
Telephone: 204.772.2501 Fax: 204.772.2500
smseng.com

ORIGINAL CONTRACT DRAWING
ISSUED AND RELEASD BY
V.B. WALKER, P. ENG
MAY 14, 2004

APCM
Certificate of Authorization
SMS Engineering Ltd.
No. 1958 Expiry: April 30, 2005

Drawings and specifications, as prepared by or on behalf of the architect, are the property of the architect. No reproduction or use of any part of these drawings without the written permission of the architect and where made, must bear his name. All rights to be returned to the architect.

The contractor shall verify dimensions and data noted herein with conditions on the site and is held responsible for reporting any discrepancy to the architect for adjustment.

This drawing shall not be used for building purposes until countersigned by:

CITY OF WINNIPEG

OFFICE ADDITION AND RENOVATION
1155 PACIFIC AVENUE
WINNIPEG, MANITOBA

FRIESEN TOKAR ARCHITECTS

MAIN FLOOR PLAN - PART C
H.V.A.C.

M2.5