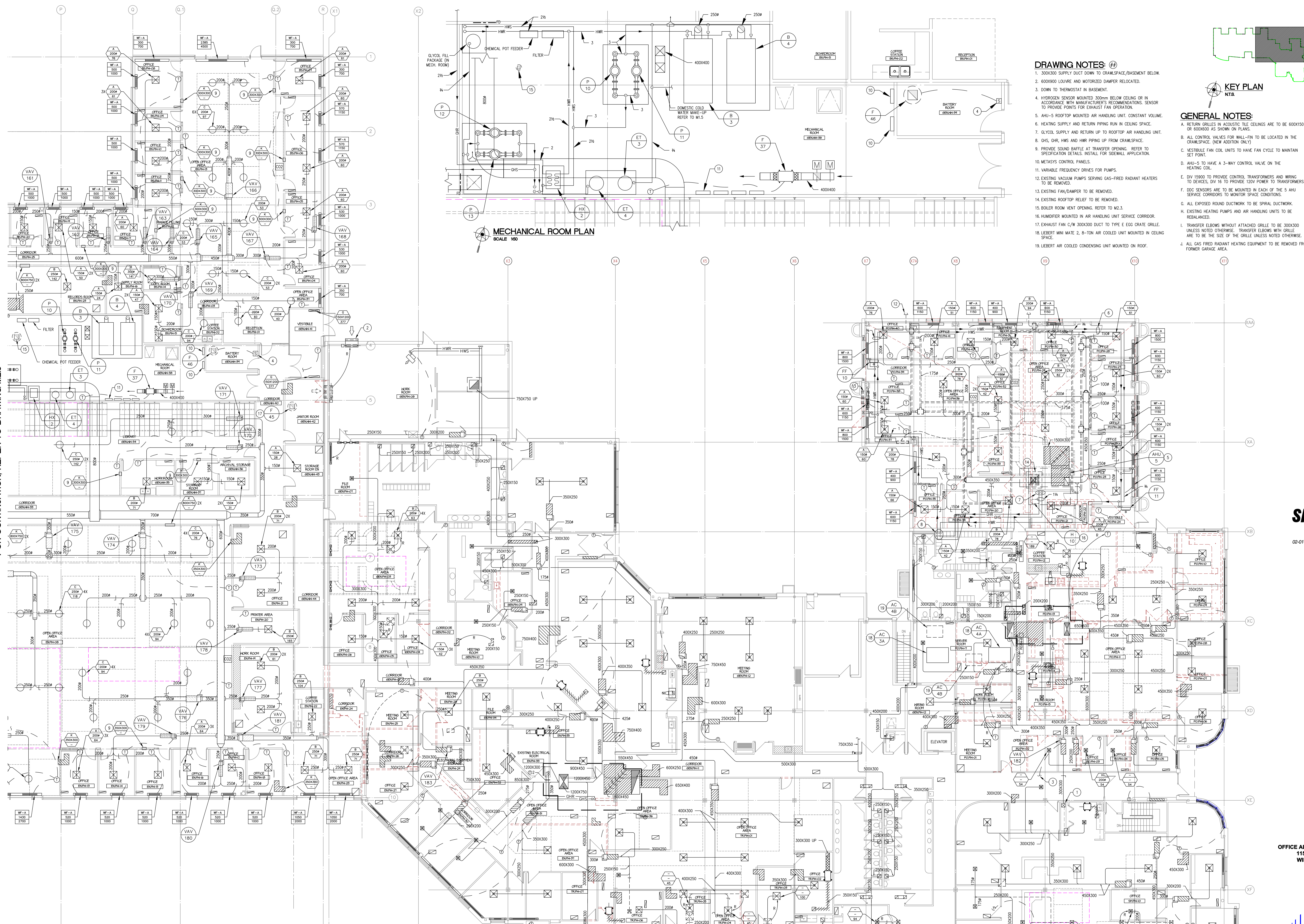


FOR CONTINUATION, REFER TO DRAWING M2.3



MAIN FLOOR PLAN - PART B  
SCALE 1/100

MECHANICAL ROOM PLAN  
SCALE 1/50

FOR CONTINUATION, REFER TO DRAWING M2.5

**DRAWING NOTES:**

- 300X300 SUPPLY DUCT DOWN TO CRAWLSPACE/BASEMENT BELOW.
- 600X900 LOUVER AND MOTORIZED DAMPER RELOCATED.
- DOWN TO THERMOSTAT IN BASEMENT.
- HYDROGEN SENSOR MOUNTED 300mm BELOW CEILING OR IN ACCORDANCE WITH MANUFACTURER'S RECOMMENDATIONS. SENSOR TO PROVIDE POINTS FOR EXHAUST FAN OPERATION.
- AHU-5 ROOFTOP MOUNTED AIR HANDLING UNIT. CONSTANT VOLUME.
- HEATING SUPPLY AND RETURN PIPING RUN IN CEILING SPACE.
- GLYCOL SUPPLY AND RETURN UP TO ROOFTOP AIR HANDLING UNIT.
- GHS, GHR, HWS AND HWR PIPING UP FROM CRAWLSPACE.
- PROVIDE SOUND Baffle AT TRANSFER OPENING. REFER TO SPECIFICATION DETAILS. INSTALL FOR SICKBAY APPLICATION.
- METASYS CONTROL PANELS.
- VARIABLE FREQUENCY DRIVES FOR PUMPS.
- EXISTING VACUUM PUMPS SERVING GAS-FIRED RADIANT HEATERS TO BE REMOVED.
- EXISTING FAN/DAMPER TO BE REMOVED.
- EXISTING ROOFTOP RELIEF TO BE REMOVED.
- BOILER ROOM VENT OPENING. REFER TO M2.3.
- HUMIDIFIER MOUNTED IN AIR HANDLING UNIT SERVICE CORRIDOR.
- EXHAUST FAN C/W 300X300 DUCT TO TYPE E EGGRATE GRILLE.
- LIBERT MINI MATE 2, 8-TON AIR COOLED UNIT MOUNTED IN CEILING SPACE.
- LIBERT AIR COOLED CONDENSING UNIT MOUNTED ON ROOF.



**GENERAL NOTES:**

- RETURN GRILLES IN ACQUISITIVE TILE CEILINGS ARE TO BE 600X150 OR 600X90 AS SHOWN ON PLANS.
- ALL CONTROL VALVES FOR WALL-FIN TO BE LOCATED IN THE CRAWLSPACE. (NEW ADDITION ONLY)
- VESTIBULE FAN COOL UNITS TO HAVE FAN CYCLE TO MAINTAIN SET POINT.
- AHU-5 TO HAVE A 3-WAY CONTROL VALVE ON THE HEATING COIL.
- DIV 15900 TO PROVIDE CONTROL TRANSFORMERS AND WIRING TO DEVICES, DIV 16 TO PROVIDE 120V POWER TO TRANSFORMERS.
- DDC SENSORS ARE TO BE MOUNTED IN EACH OF THE 5 AHU SERVICE CORRIDORS TO MONITOR SPACE CONDITIONS.
- ALL EXPOSED SOUND DUCTWORK TO BE SPIRAL DUCTWORK.
- EXISTING HEATING PUMPS AND AIR HANDLING UNITS TO BE REBALANCED.
- TRANSFER ELBOWS WITHOUT ATTACHED GRILLE TO BE 300X300 UNLESS NOTED OTHERWISE. TRANSFER ELBOWS WITH GRILLE ARE TO BE THE SIZE OF THE GRILLE UNLESS NOTED OTHERWISE.
- ALL GAS-FIRED RADIANT HEATING EQUIPMENT TO BE REMOVED FROM FORMER GARAGE AREA.

Friesen Tokar Architects  
200 - 2033 Portage Avenue  
Winnipeg, Canada R3J 0K6  
Tel. 204.885.9323  
Fax. 204.837.7235

DRAWN BY: JC  
CHECKED BY: HW  
DATE: MAY 2004

PROJECT NO: 01716

ISSUED FOR 50% REVIEW  
FEBRUARY 6, 2004

ISSUED FOR 75% REVIEW  
MARCH 5, 2004

ISSUED FOR PRETENDER REVIEW  
APRIL 2004

ISSUED FOR TENDER  
MAY 14, 2004

DATE: MAY 2004

PROJECT NO: 01716

ISSUED FOR 50% REVIEW  
FEBRUARY 6, 2004

ISSUED FOR 75% REVIEW  
MARCH 5, 2004

ISSUED FOR PRETENDER REVIEW  
APRIL 2004

ISSUED FOR TENDER  
MAY 14, 2004

DATE: MAY 2004

PROJECT NO: 01716

ISSUED FOR 50% REVIEW  
FEBRUARY 6, 2004

ISSUED FOR 75% REVIEW  
MARCH 5, 2004

ISSUED FOR PRETENDER REVIEW  
APRIL 2004

ISSUED FOR TENDER  
MAY 14, 2004

DATE: MAY 2004

PROJECT NO: 01716

ISSUED FOR 50% REVIEW  
FEBRUARY 6, 2004

ISSUED FOR 75% REVIEW  
MARCH 5, 2004

ISSUED FOR PRETENDER REVIEW  
APRIL 2004

ISSUED FOR TENDER  
MAY 14, 2004

DATE: MAY 2004

PROJECT NO: 01716

ISSUED FOR 50% REVIEW  
FEBRUARY 6, 2004

ISSUED FOR 75% REVIEW  
MARCH 5, 2004

ISSUED FOR PRETENDER REVIEW  
APRIL 2004

ISSUED FOR TENDER  
MAY 14, 2004

DATE: MAY 2004

PROJECT NO: 01716

ISSUED FOR 50% REVIEW  
FEBRUARY 6, 2004

ISSUED FOR 75% REVIEW  
MARCH 5, 2004

ISSUED FOR PRETENDER REVIEW  
APRIL 2004

ISSUED FOR TENDER  
MAY 14, 2004

DATE: MAY 2004

PROJECT NO: 01716

ISSUED FOR 50% REVIEW  
FEBRUARY 6, 2004

ISSUED FOR 75% REVIEW  
MARCH 5, 2004

ISSUED FOR PRETENDER REVIEW  
APRIL 2004

ISSUED FOR TENDER  
MAY 14, 2004

DATE: MAY 2004

PROJECT NO: 01716

THE CITY OF WINNIPEG

OFFICE ADDITION AND RENOVATION  
1155 PACIFIC AVENUE  
WINNIPEG, MANITOBA

FRIESEN TOKAR ARCHITECTS

MAIN FLOOR PLAN - PART B  
H.V.A.C.  
M2.4