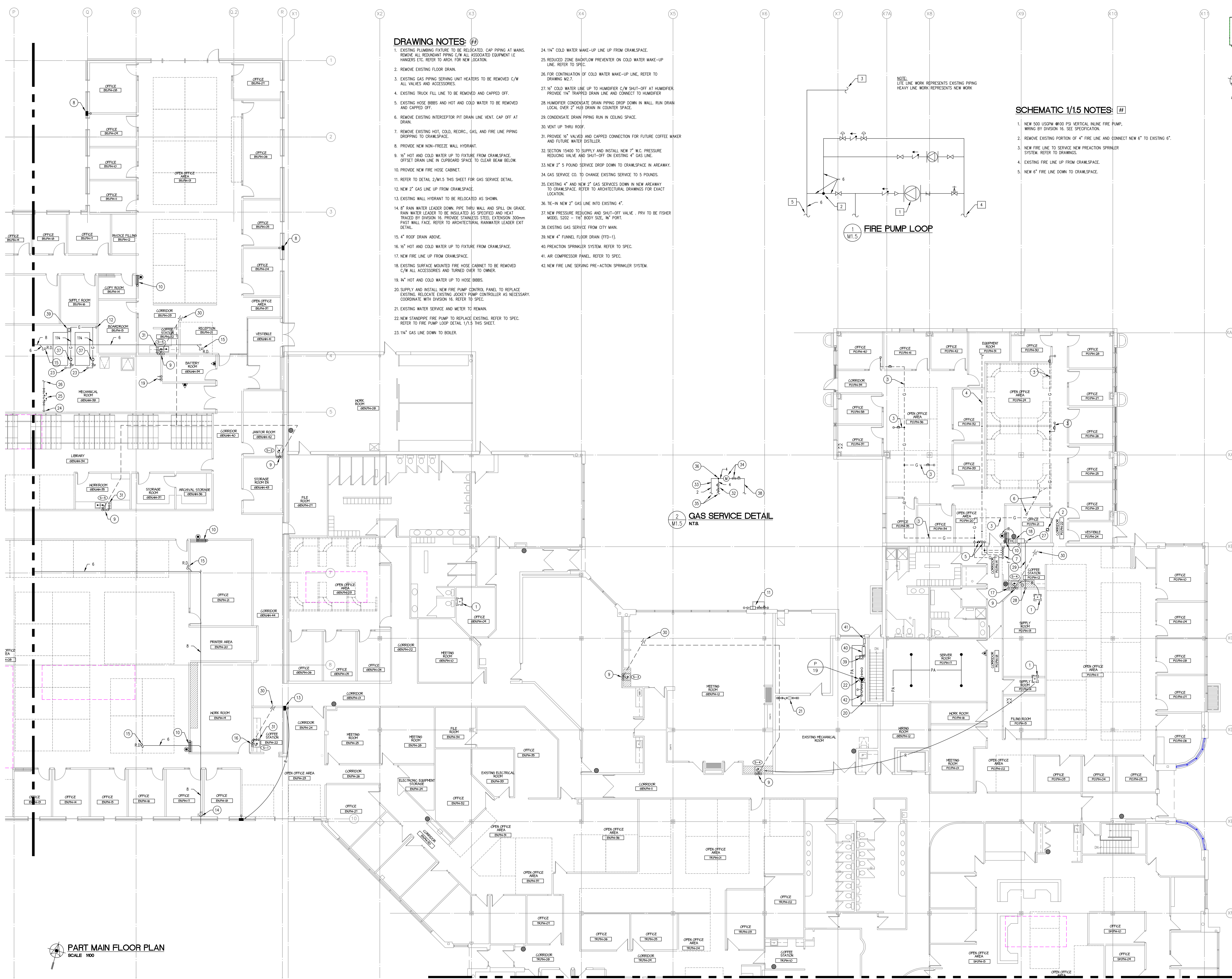
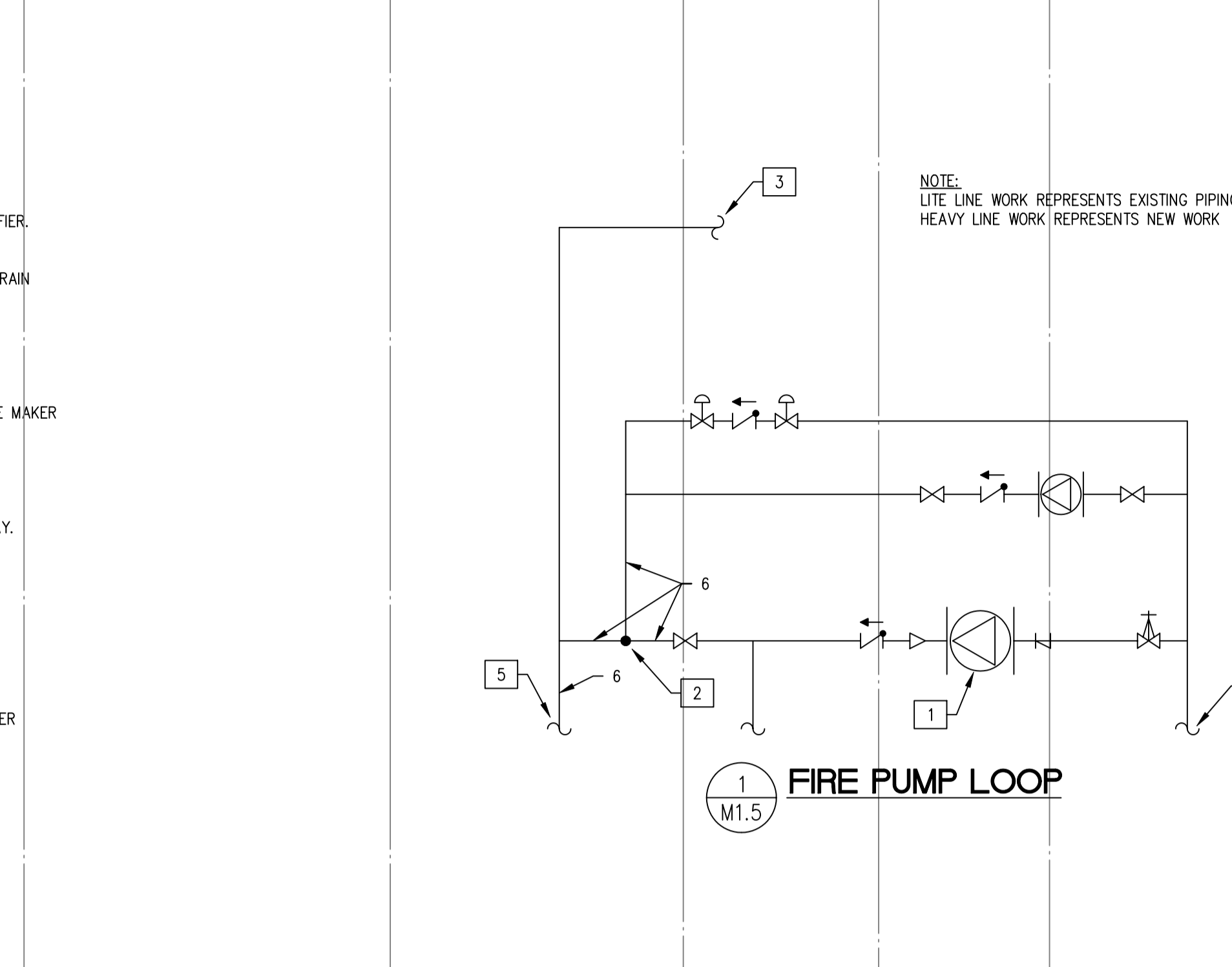


FOR CONTINUATION, REFER TO DRAWING M1.4



**DRAWING NOTES:**

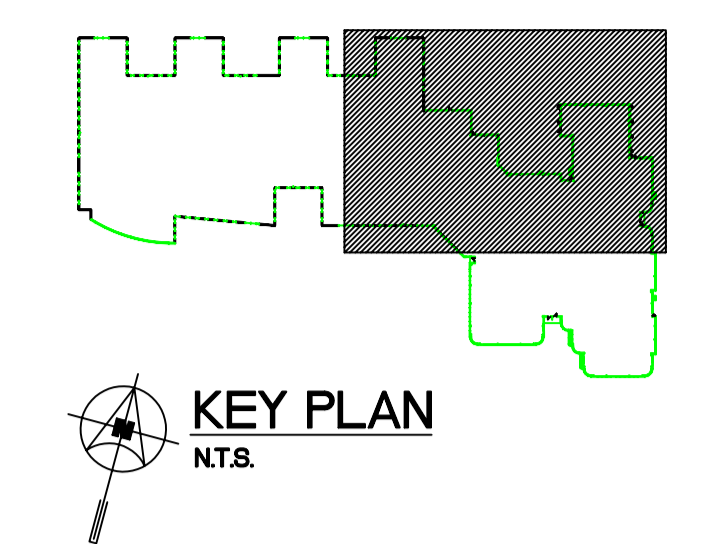
- EXISTING PLUMBING FIXTURE TO BE RELOCATED. CAP PIPING AT MAINS. REMOVE ALL REMAINING PIPING C/W ALL ASSOCIATED EQUIPMENT I.E. HANGERS ETC. REFER TO ARCH. FOR NEW LOCATION.
- REMOVE EXISTING FLOOR DRAIN.
- EXISTING GAS PIPING SERVING UNIT HEATERS TO BE REMOVED C/W ALL VALVES AND ACCESSORIES.
- EXISTING TRUCK FILL LINE TO BE REMOVED AND CAPPED OFF.
- EXISTING HOSE BIBBS AND HOT AND COLD WATER TO BE REMOVED AND CAPPED OFF.
- REMOVE EXISTING INTERCEPTOR PIT DRAIN LINE VENT. CAP OFF AT DRAIN.
- REMOVE EXISTING HOT, COLD, RECIRC., GAS, AND FIRE LINE PIPING DROPPING TO CRAWLSPACE.
- PROVIDE NEW NON-FREEZE WALL HYDRANT.
- 1/2" HOT AND COLD WATER UP TO FIXTURE FROM CRAWLSPACE. OFFSET DRAIN LINE IN CRAWLSPACE TO CLEAR BEAM BELOW.
- PROVIDE NEW FIRE HOSE CABINET.
- REFER TO DETAIL 2/M1.5 THIS SHEET FOR GAS SERVICE DETAIL.
- NEW 2" GAS LINE UP FROM CRAWLSPACE.
- EXISTING WALL HYDRANT TO BE RELOCATED AS SHOWN.
- 8" RAIN WATER LEADER DOWN. PIPE THRU WALL AND SPILL ON GRADE. RAIN WATER LEADER TO BE INSULATED AS SPECIFIED AND HEAT TRACED BY DIVISION 16. PROVIDE STAINLESS STEEL, EXTENSION 300mm PAST WALL FACE. REFER TO ARCHITECTURAL RAINWATER LEADER EXIT DETAIL.
- ROOF DRAIN ABOVE.
- 1/2" HOT AND COLD WATER UP TO FIXTURE FROM CRAWLSPACE.
- NEW FIRE LINE UP FROM CRAWLSPACE.
- EXISTING SURFACE MOUNTED FIRE HOSE CABINET TO BE REMOVED C/W ALL ACCESSORIES AND TURNED OVER TO OWNER.
- 1/2" HOT AND COLD WATER UP TO HOSE BIBBS.
- SUPPLY AND INSTALL NEW FIRE PUMP CONTROL PANEL TO REPLACE EXISTING. RELOCATE EXISTING JOCKEY PUMP CONTROLLER AS NECESSARY. COORDINATE WITH DIVISION 16. REFER TO SPEC.
- EXISTING WATER SERVICE AND METER TO REMAIN.
- NEW STANDPIPE FIRE PUMP TO REPLACE EXISTING. REFER TO SPEC. REFER TO FIRE PUMP LOOP DETAIL 1/1.5 THIS SHEET.
- 1 1/4" GAS LINE DOWN TO BOILER.



**SCHEMATIC 1/1.5 NOTES:**

- NEW 500 USGPM @100 PSI VERTICAL INLINE FIRE PUMP. WIRING BY DIVISION 16. SEE SPECIFICATION.
- REMOVE EXISTING PORTION OF 4" FIRE LINE AND CONNECT NEW 6" TO EXISTING 6".
- NEW FIRE LINE TO SERVICE NEW PREACTION SPRINKLER SYSTEM. REFER TO DRAWINGS.
- EXISTING FIRE LINE UP FROM CRAWLSPACE.
- NEW 6" FIRE LINE DOWN TO CRAWLSPACE.

**2 GAS SERVICE DETAIL**



Friesen Tokar Architects  
200 - 2033 Portage Avenue  
Winnipeg, Canada R2T 3K6  
Tel. 204.885.9323  
Fax. 204.837.7235

DESIGNER:	KM
DESIGNED BY:	HJM
DATE:	MAY 2004
PROJECT NO.:	01716
REVISIONS:	
1. ISSUED FOR 50% REVIEW	FEBRUARY 6, 2004
2. ISSUED FOR 75% REVIEW	MARCH 5, 2004
3. ISSUED FOR PRETENDER REVIEW	APRIL 2004
4. ISSUED FOR TENDER	MAY 14, 2004

**SMS ENGINEERING**  
SMS Engineering Ltd. Consulting Engineers  
775 Superior Street Winnipeg MB Canada R2H 0G3  
Telephone: (204) 772-2291 Fax: (204) 772-2155  
www.smseng.com  
02-018-01

**ORIGINAL CONTRACT DRAWING**  
ISSUED AND RELEASD BY  
V.B. WALKER, P. ENG  
MAY 14, 2004

**APCM**  
Certificate of Authorization  
SMS Engineering Ltd.  
No. 1906 Expiry: April 30, 2006

Drawings and specifications, as instruments of service are the property of the architect, the copyright in the same being reserved to him. No reproduction may be made without the permission of the architect and other trade, except for the owner. All prints to be returned to the architect.  
The contractor shall verify dimensions and site-related details with conditions on the site and is held responsible for reporting any discrepancy to the architect for adjustment.  
This drawing shall not be used for building purposes until countersigned by:

**THE CITY OF WINNIPEG**

**OFFICE ADDITION AND RENOVATION**  
1155 PACIFIC AVENUE  
WINNIPEG, MANITOBA

**FRIESEN TOKAR ARCHITECTS**

MAIN FLOOR PLAN - PART B  
PLUMBING AND FIRE PROTECTION  
**M1.5**

FOR CONTINUATION, REFER TO DRAWING M1.6

**PART MAIN FLOOR PLAN**  
SCALE 1/100