

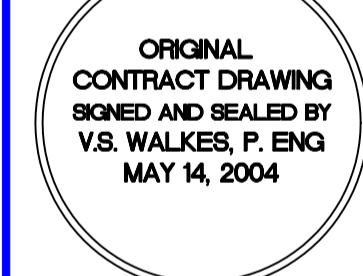
DRAWING NOTES:

1. PROVIDE NEW NON-FREEZE WALL HYDRANT.
2. PROVIDE 1/2" VALVED AND CAPPED CONNECTION FOR FUTURE COFFEE MAKER.
3. PROVIDE NEW FIRE HOSE CABINET.
4. 8" RAIN WATER LEADER DOWN PIPE THRU WALL AND SPILL ON GRADE. RAIN WATER LEADER TO BE INSULATED AS SPECIFIED AND HEAT TRACED BY DIVISION 16. PROVIDE STAINLESS STEEL EXTENSION 300MM PAST WALL FACE. REFER TO ARCHITECTURAL RAINWATER LEADER EXIT DETAIL.
5. 10" RAIN WATER LEADER DOWN PIPE THRU WALL AND SPILL ON GRADE. RAIN WATER LEADER TO BE INSULATED AS SPECIFIED AND HEAT TRACED BY DIVISION 16. PROVIDE STAINLESS STEEL EXTENSION 300MM PAST WALL FACE. REFER TO ARCHITECTURAL RAINWATER LEADER EXIT DETAIL.
6. 1 1/4" SUMP PUMP DISCHARGE LINE UP FROM CRAWLSPACE. PIPE THRU WALL AND SPILL ON GRADE. SUMP PUMP DISCHARGE LINE TO BE INSULATED AS SPECIFIED AND HEAT TRACED BY DIVISION 16.
7. 6" ROOF DRAIN ABOVE.
8. 4" ROOF DRAIN ABOVE.
9. 1/2" COLD WATER LINE C/W SHUT-OFF UP TO HUMIDIFIER IN AHU ON ROOF. PROVIDE 1/4" TRAPPED DRAIN LINE AND CONNECT TO HUMIDIFIER.
10. HUMIDIFIER CONDENSATE DRAIN PIPING DROP DOWN IN WALL. RUN DRAIN LOCAL OVER 2" HUB DRAIN IN COUNTER SPACE.
11. CONDENSATE DRAIN PIPING RUN IN CEILING SPACE.
12. 1/2" COLD WATER LINE UP TO W.C. AND HUMIDIFIER. PIPE 1/2" TO W.C. AND 1/2" C/W SHUT-OFF VALVE TO HUMIDIFIER. PROVIDE 1/4" TRAPPED DRAIN LINE CONNECTION TO HUMIDIFIER.
13. RAIN HUMIDIFIER CONDENSATE DRAIN LINE LOCAL OVER 2" FUNNEL FLOOR DRAIN (FTD-2).
14. KENT UP THRU ROOF.
15. 1/2" HOT AND COLD WATER UP TO FIXTURE FROM CRAWLSPACE.
16. 1/2" HOT, COLD, AND 1/2" REGRIC. WATER LINES UP FROM CRAWLSPACE TO MIXING VALVE LOCATED IN RECESSED BOX IN WALL BELOW FIXTURES. REFER TO DETAIL 3/M1.4 FOR PIPING HOOK-UP.
17. 1/2" COLD WATER UP FROM BELOW SERVING HUMIDIFIERS. RUN COLD WATER IN CEILING SPACE.
18. 1/2" HOT, 1/2" COLD, AND 1/2" REGRIC. LINES DOWN TO CRAWLSPACE.
19. NEW DOMESTIC HOT WATER REGRIC. PUMP. REFER TO SPEC.
20. 1/4" COLD WATER RUN IN WALL TO WATER CLOSET.
21. 1/4" COLD WATER UP TO WATER CLOSET.
22. 1/2" HOT AND 1/2" COLD WATER UP FROM CRAWLSPACE. PIPE 1/2" HOT AND COLD TO SHOWER AND 1/4" COLD WATER TO WATER CLOSET.
23. REFER TO PIPING SCHEMATIC 1/M1.4 FOR COLD WATER PIPING ARRANGEMENT AND SIZING.
24. REFER TO PIPING SCHEMATIC 2/M1.4 FOR COLD WATER PIPING ARRANGEMENT AND SIZING.
25. MAIN BUILDING CLEANOUT AT MAIN FLOOR LEVEL.
26. MIXING VALVE LOCATED IN RECESSED BOX IN WALL BELOW FIXTURE(S).
27. 1/2" HOT, COLD, AND REGRIC. WATER LINES UP FROM CRAWLSPACE. RUN PIPING IN WALL TO MIXING VALVE LOCATED IN RECESSED BOX IN WALL BELOW FIXTURE(S). REFER TO DETAIL 3/M1.4 FOR PIPING HOOK-UP.
28. 1/2" HOT AND COLD WATER UP TO SHOWER.
29. 1/2" HOT, COLD, AND 1/2" REGRIC. WATER LINES UP FROM CRAWLSPACE INSIDE WALL FURRING TO MIXING VALVE LOCATED IN RECESSED BOX IN WALL BELOW FIXTURES. REFER TO DETAIL 3/M1.4 FOR PIPING HOOK-UP.
30. HUMIDIFIER CONDENSATE DRAIN LINE RUN IN CEILING SPACE.
31. 1/2" COLD WATER UP FROM CRAWLSPACE TO DRINKING FOUNTAIN.
32. CONDENSATE DRAIN PIPING RUN CONCEALED IN WALL.
33. PREACTION SPRINKLER SYSTEM. REFER TO SPEC.
34. AIR COMPRESSOR PANEL. REFER TO SPEC.
35. 4" HUB DRAIN.
36. EXPANSION TANK. REFER TO SPEC DETAIL.
37. 2" FLOOR DRAIN (FD-2).
38. 2" FUNNEL FLOOR DRAIN (FTD-2).
39. NEW HOT WATER TANK ON 4" HOUSEKEEPING PAD. REFER TO SPEC.

FOR CONTINUATION, REFER TO DRAWING M15



SMS Engineering Ltd. Consulting Engineers
 775 Buxton Street Winnipeg MB Canada R2M 0K9
 Telephone: 204.775.2100 Fax: 204.775.2105
 sms@smseng.com 02-018-01



APCM
 Certificate of Authorization
 SMS Engineering Ltd.
 No. 1906 Expiry: April 30, 2006

Drawings and specifications, as instruments of service are the property of the architect, the copyright in same being reserved to him. His reproduction may be made only with the permission of the architect and other trade, must bear his name. All prints to be returned to the architect.
 The contractor shall verify dimensions and data noted herein with conditions on the site and is held responsible for reporting any discrepancy to the architect for adjustment.
 This drawing shall not be used for building purposes unless countersigned by:

THE CITY OF WINNIPEG

OFFICE ADDITION AND RENOVATION
 1155 PACIFIC AVENUE
 WINNIPEG, MANITOBA



MAIN FLOOR PLAN - PART A
 PLUMBING AND FIRE PROTECTION
M1.4



PART MAIN FLOOR PLAN
 SCALE 1/100

