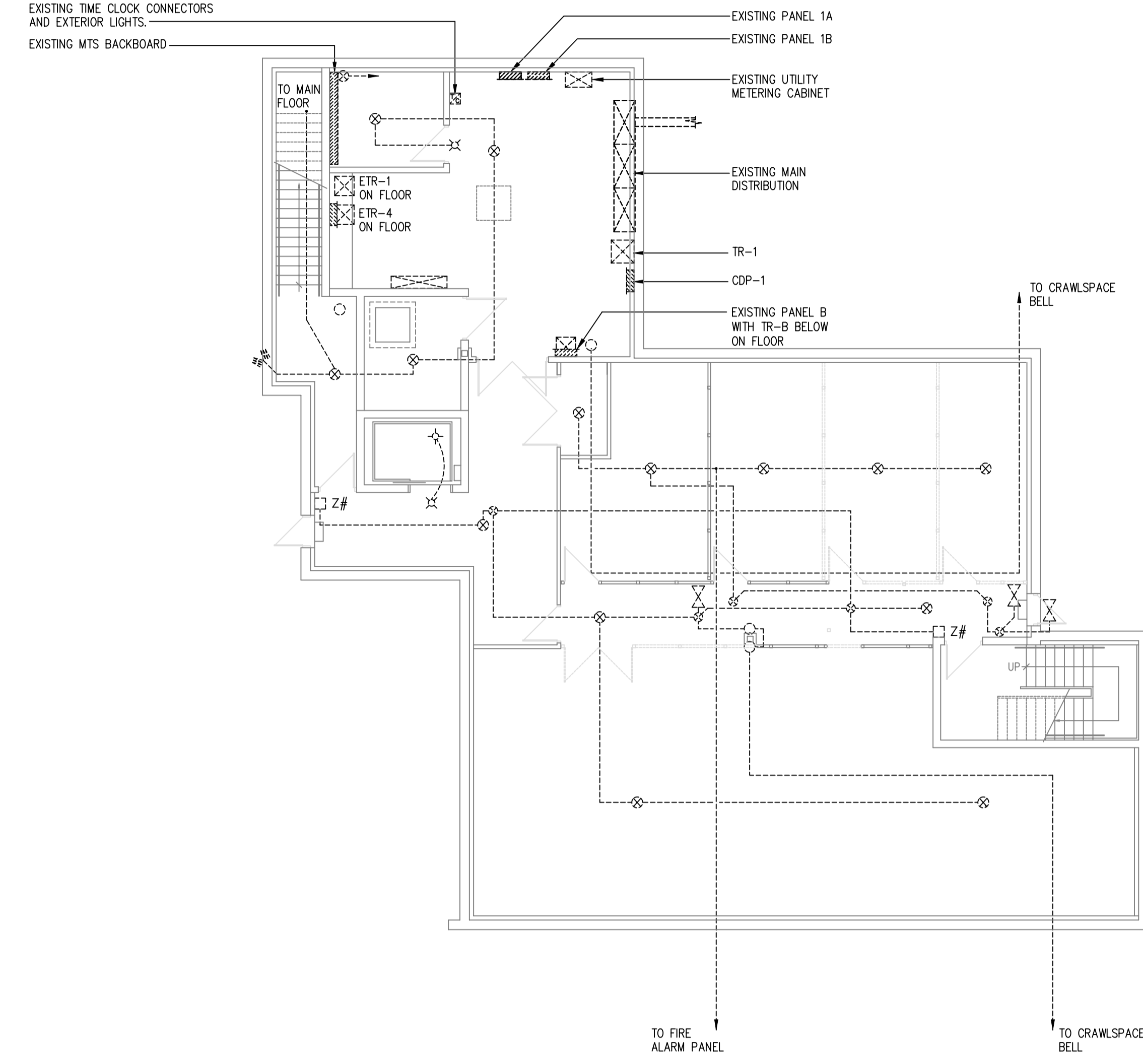
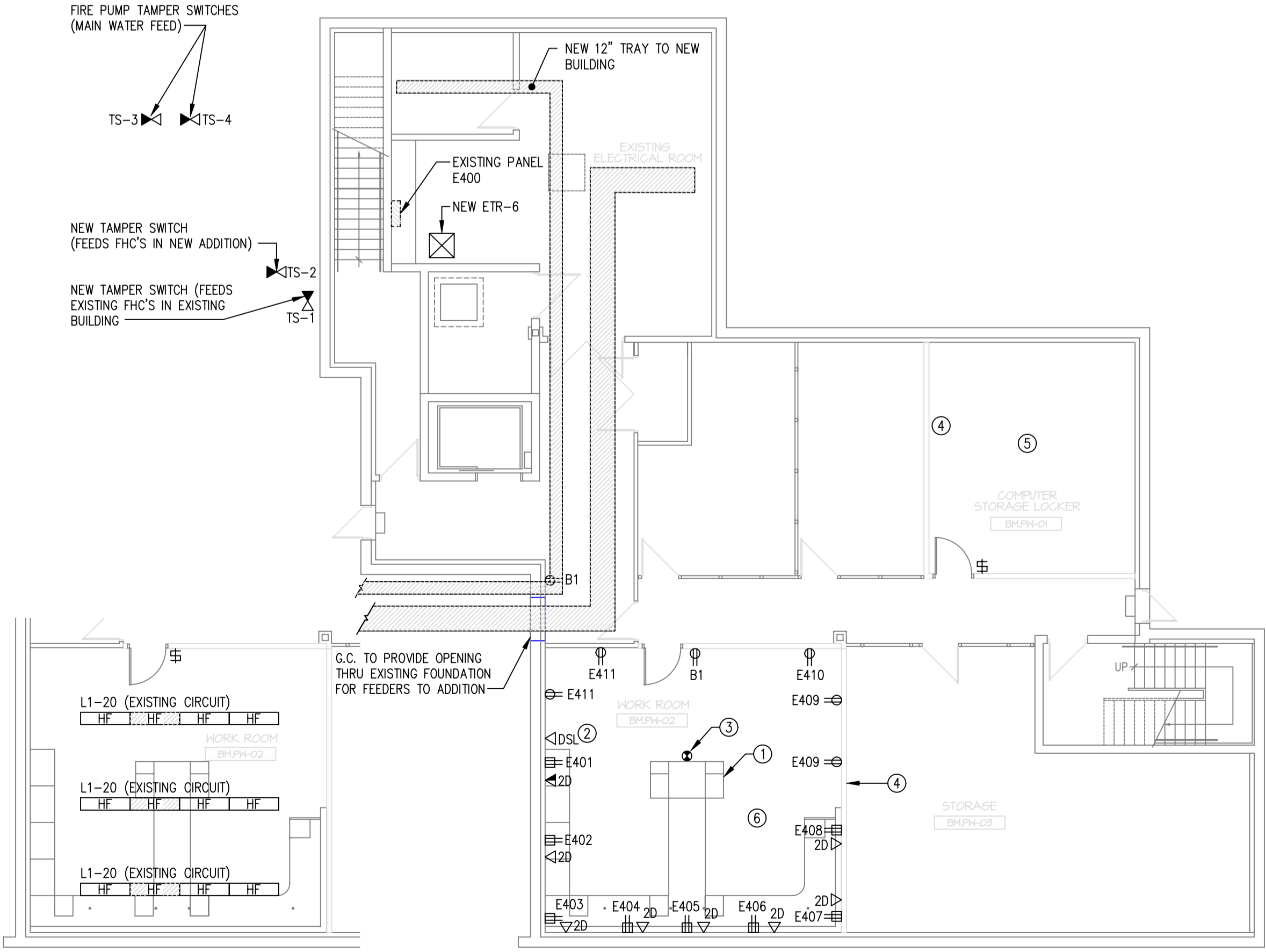


CRAWLSPACE PLAN - EXISTING
SCALE 1:1000



EXISTING BASEMENT PLAN
SCALE 1:100



LIGHTING

POWER AND SYSTEMS

NEW BASEMENT PLAN
SCALE 1:100

- NOTES:
- RECONNECT EXISTING POWER AND DATA U/S OF ISLAND.
 - CONFIRM OSL OUTLET LOCATION WITH OWNER PRIOR TO ROUGH-IN.
 - EXISTING SMOKE DETECTOR RELOCATED TO HERE.
 - RELOCATE EXISTING LIGHTING TO SUIT NEW WALL.
 - PROVIDE NEW LIGHT SWITCH FOR NEW ROOM.
 - WORK ROOM POWER IS FED FROM EXISTING PANEL E400. REUSE EXISTING CIRCUITS REMOVED FROM MAIN FLOOR. CIRCUIT NUMBERS ARE SHOWN FOR LOADING/GRIPPING ONLY. CONFIRM EXACT CIRCUITS ON SITE. PROVIDE ADDITIONAL CIRCUIT BREAKERS AS REQUIRED. EXISTING CIRCUITS MAY BE REUSED IF SUITABLE.

Friesen Tokar Architects 200 - 2033 Portage Avenue Winnipeg, Canada R3J 0K8 Tel. 204.885.9323 Fax. 204.837.7235	
DRAWN BY	AMP / AA
CHECKED BY	CB
DATE	APRIL 2004
PROJECT NO.	
FILE PATH	
ISSUE	
1. ISSUED FOR 50% REVIEW FEBRUARY 6, 2004	
2. ISSUED FOR 75% REVIEW MARCH 5, 2004	
3. ISSUED FOR PRETENDER REVIEW APRIL 2004	
4. ISSUED FOR TENDER MAY 14, 2004	
REVISION	

SMS ENGINEERING
SMS Engineering Ltd. Consulting Engineers
775 Buxton Street Winnipeg MB Canada R3B 0K9
Telephone: 945.725.0501 Fax: 204.772.0100
smsengineering.com

ORIGINAL CONTRACT DRAWING
ISSUED AND RELEASED BY
ANDY LORBER, P.ENG.
MAY 12, 2004

APCM
Certificate of Authorization
SMS Engineering Ltd.
No. 106 (Expiry: April 30, 2005)

Drawings and specifications, as
presented, are the property of the
architect. No reproduction or
transmission in any form or by
any means, without the written
permission of the architect and
where made, must bear the name.
All rights are reserved to the
architect.
The contractor shall verify
dimensions and data noted herein
with conditions on the site and is
held responsible for reporting any
discrepancy to the architect for
adjustment.
This drawing shall not be used for
building purposes and
counterpartied by:

THE CITY OF WINNIPEG

OFFICE ADDITION AND RENOVATION
1155 PACIFIC AVENUE
WINNIPEG, MANITOBA

FRIESEN TOKAR ARCHITECTS

EXISTING BASEMENT AND CRAWLSPACE
LIGHTING, POWER AND SYSTEMS

E2.1

20040420.dwg 3-13-04 10:45:20 am CST