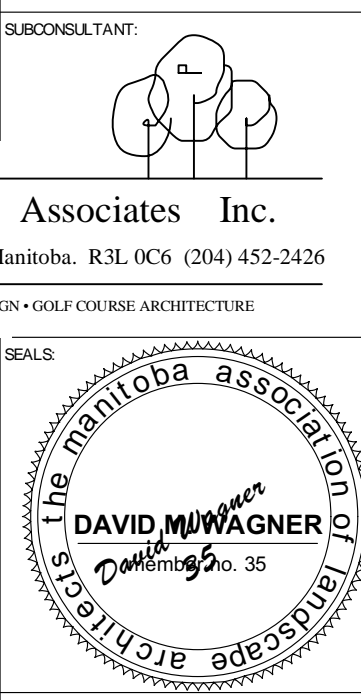


Qty.	Botanical / Common Name	Size / Remarks
EVERGREEN TREES		
23	Picea pungens / Colorado Blue Spruce	3.0 M ht. Full and even growth all sides, well branched to grade, single well-formed leader, B&B.
DECIDUOUS TREES		
5	Acer ginnala / Amur Maple	25 mm cal. each of min. 3 stems, 4.0 M ht. clump form, B&B.
7	Acer saccharinum / Silver Maple	75 mm cal. 6.0 M ht., Well formed head, B&B.
11	Fraxinus mandshurica 'Mancana' / Manchurian Ash	65 mm cal. 5.0 M ht., Well formed head, B&B.
21	Fraxinus 'Northern Treasure' / Northern Treasure Ash	65 mm cal. 4.5 M ht., Well formed head, B&B.
17	Fraxinus pennsylvanica sub. / Green Ash	65 mm cal. 5.0 M ht., Well formed head, B&B.
4	Prunus maackii / Amur Cherry	25 mm cal. 3 M ht., Well formed head, B&B.
9	Tilia mongolica 'Harvest Gold' / Harvest Gold Linden	65 mm cal. 3.5 M ht., Well formed head, B&B.
14	Ulmus davidiana var. Japonica 'Discovery' / Discovery Elm	65 mm cal. 5.0 M ht., Well formed head, B&B.
EVERGREEN SHRUBS		
22	Potentilla fruticosa 'Prince of Wales' / Prince of Wales Juniper	50 cm spread, full and bushy plants, # 5 container.
DECIDUOUS SHRUBS		
34	Potentilla fruticosa 'Coronation Triumph' / Coronation Triumph Potentilla	50 cm ht. Full and evenly branched, min. 4 canes, # 3 container
50	Rosa 'Therese Bugnet' / Therese Bugnet Rose	60 cm ht. Full and evenly branched, min. 5 canes, # 3 container
28	Spiraea bumalda 'Froebelii' / Froebel Spirea	50 cm ht. Full and evenly branched, min. 4 canes, # 3 container
21	Syringa meyeri / Meyer Lilac	60 cm ht. Full and evenly branched, min. 4 canes, # 5 container
80	Viburnum 'Alfredo' / Alfredo Cranberry	50 cm ht. Full and evenly branched, min. 4 canes, # 3 container
PERENNIALS		
100	Heimerallis hybrida / Daylily	Various Sizes and Colours, Potted. Plant in Groups of Min. 5 per Variety Spacing to Depend on Variety

REVISION	DATE	DESCRIPTION
1	Base	Mar 10, 2004
2	Details	Mar 31, 2004
3	Details	Apr 24, 2004
4	Stamp	May 14, 2004



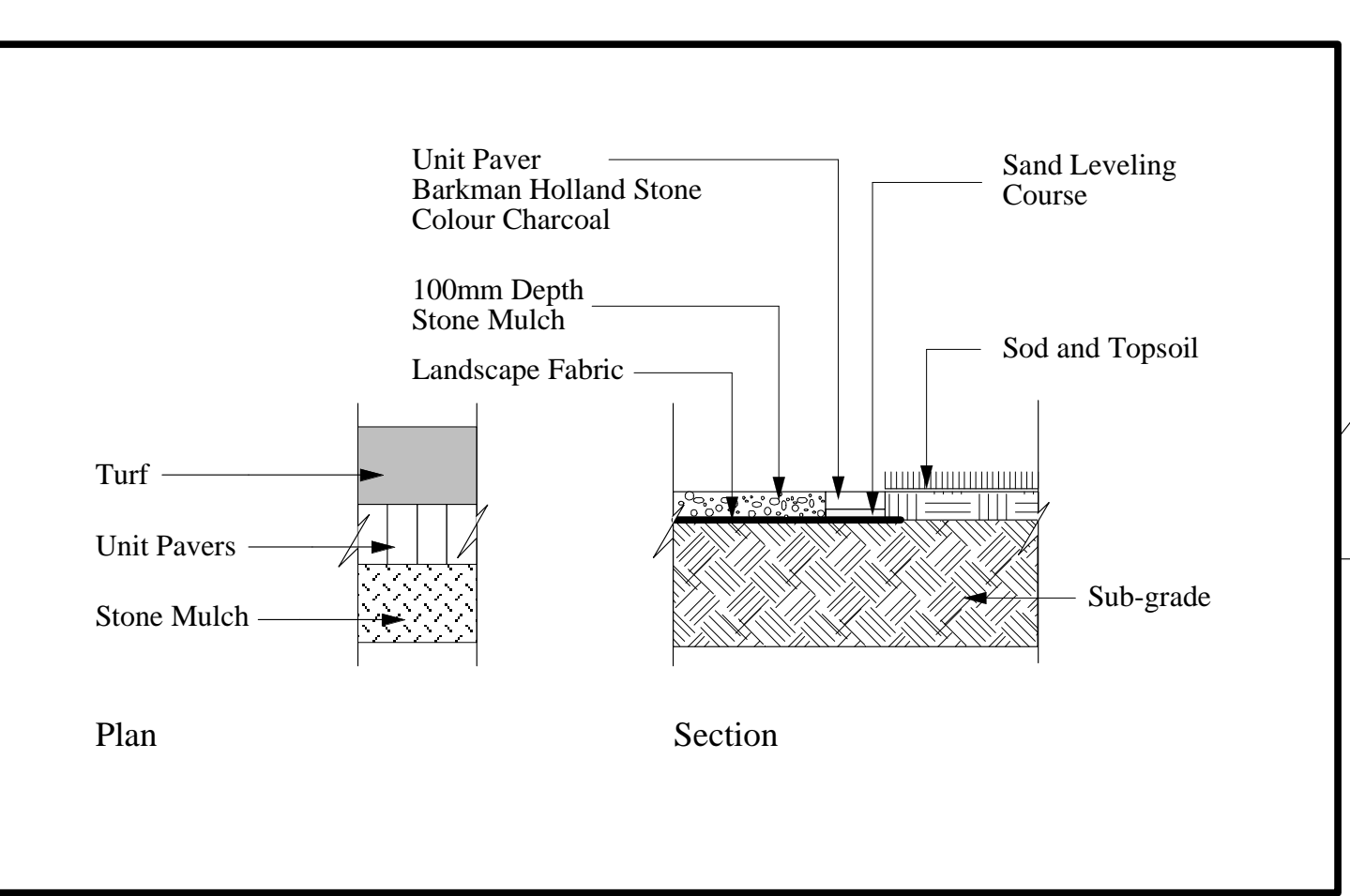
David Wagner Associates Inc.
4 - 430 River Avenue Winnipeg, Manitoba, R3L 0C6 (204) 452-2426
LANDSCAPE ARCHITECTURE • URBAN DESIGN • HOUSING ARCHITECTURE

THE CITY OF WINNIPEG

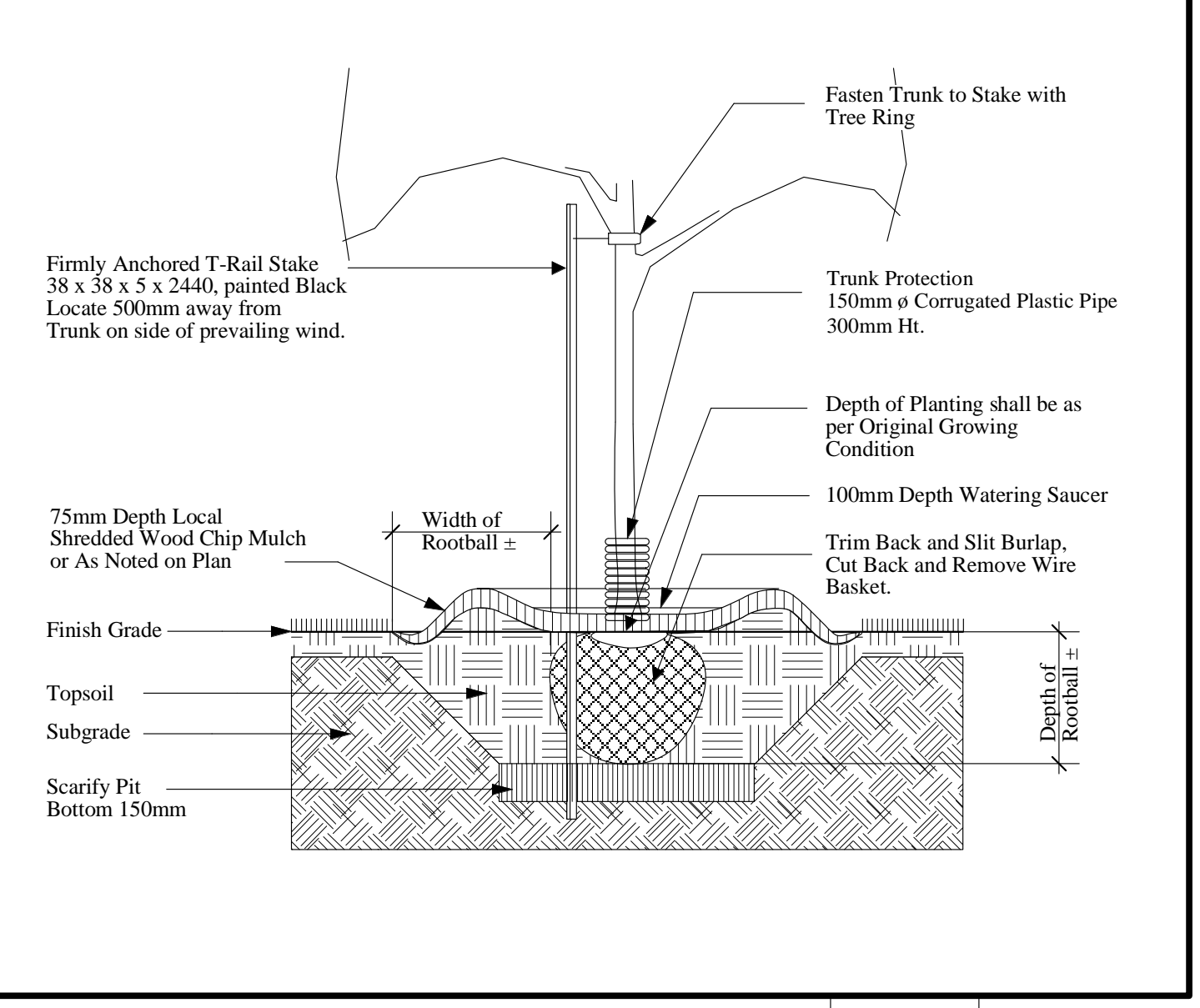
OFFICE ADDITION AND RENOVATION
1155 PACIFIC AVENUE
WINNIPEG, MANITOBA



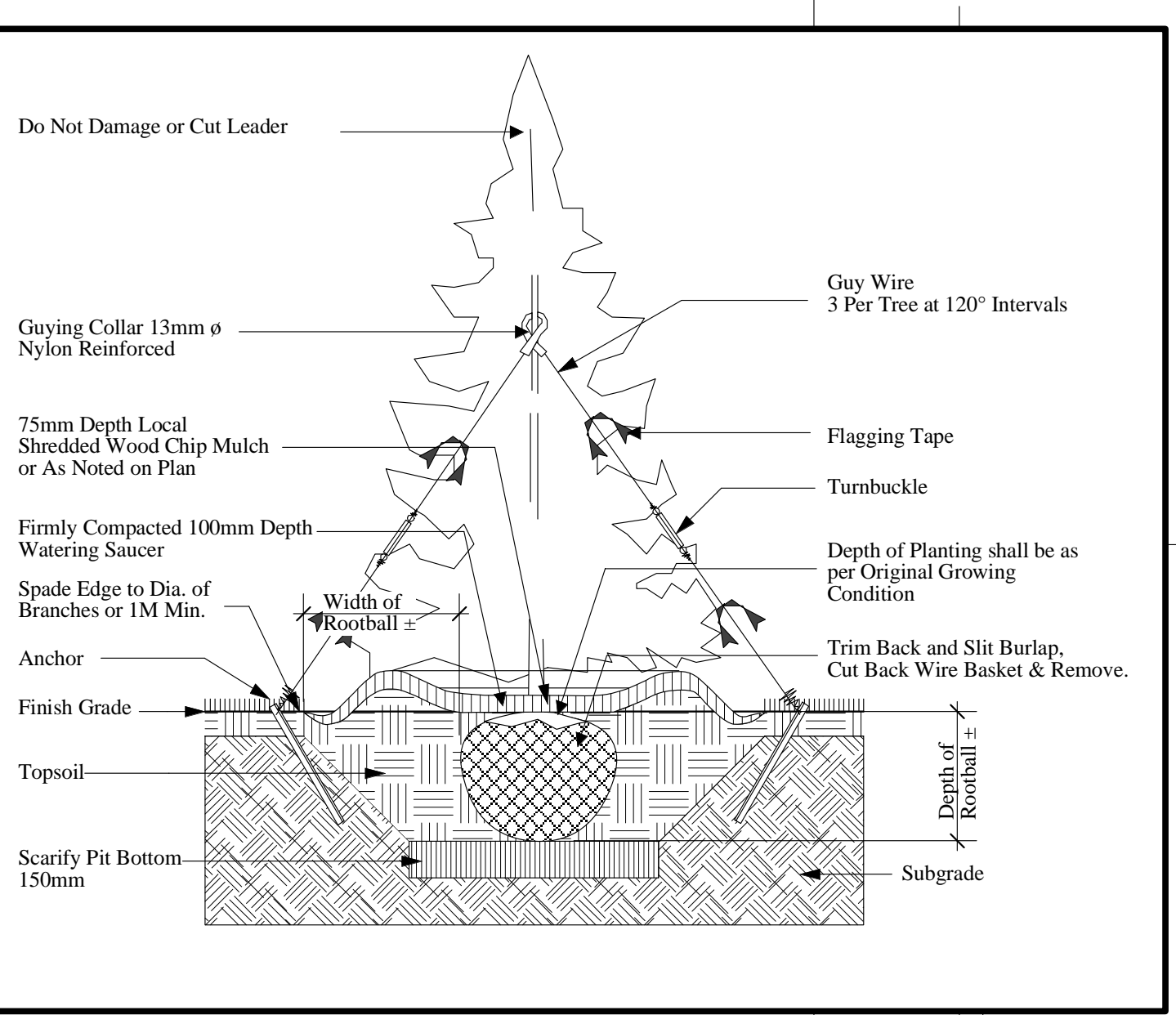
LANDSCAPE PLAN
A1.5



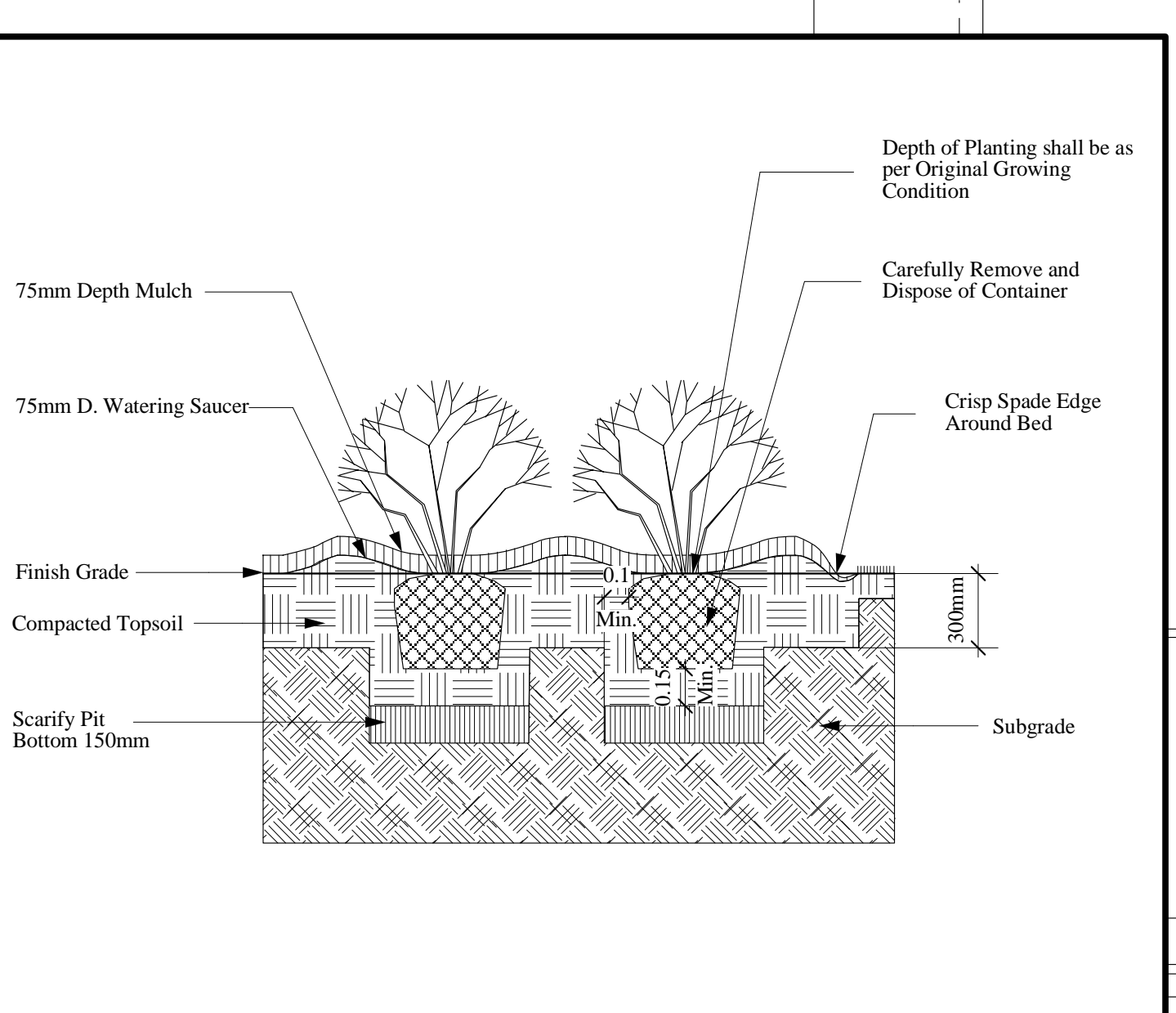
2
A1.5
Unit Paver Edge Detail
1:25



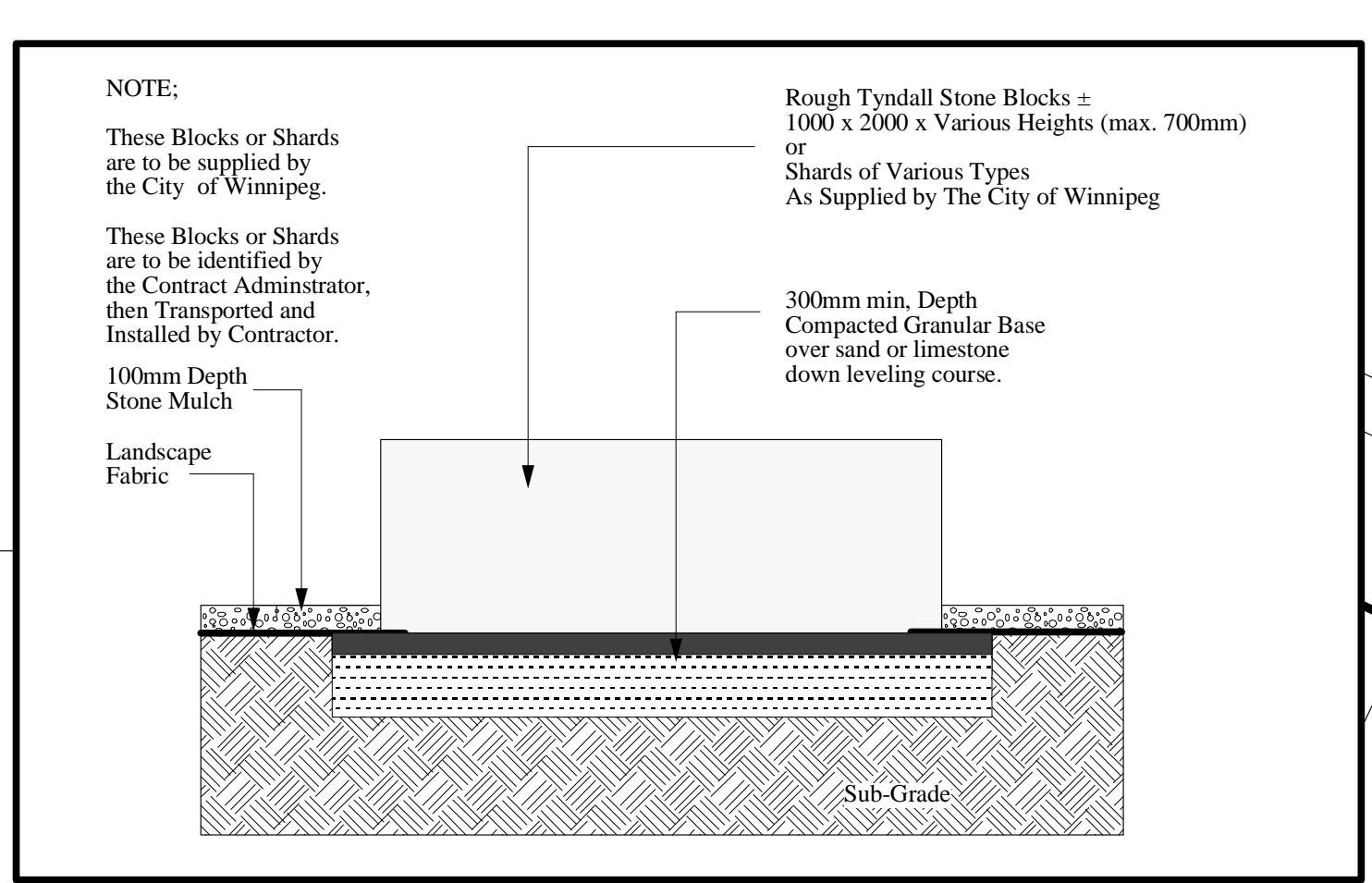
3
A1.5
Deciduous Tree in Lawn
1:25



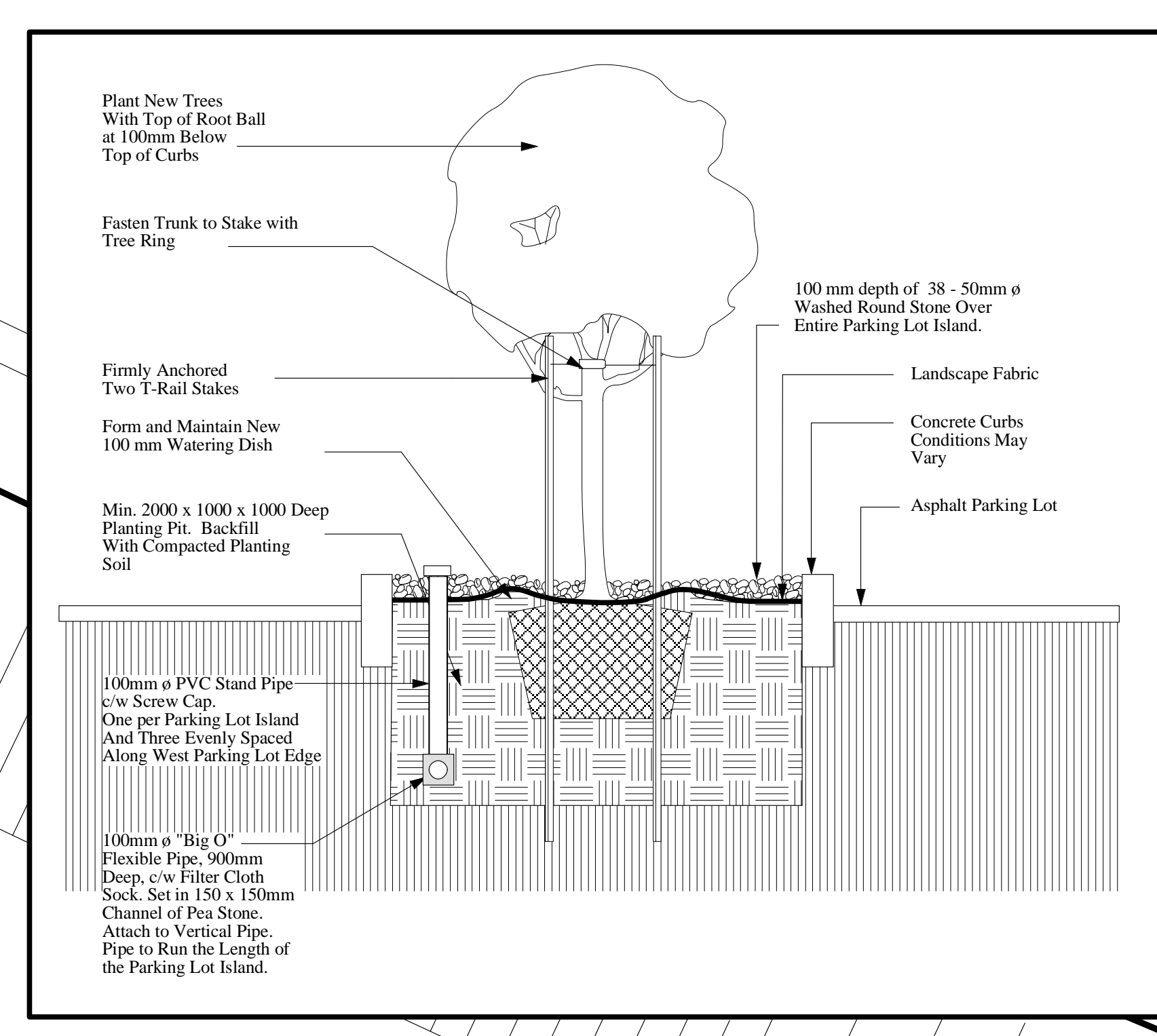
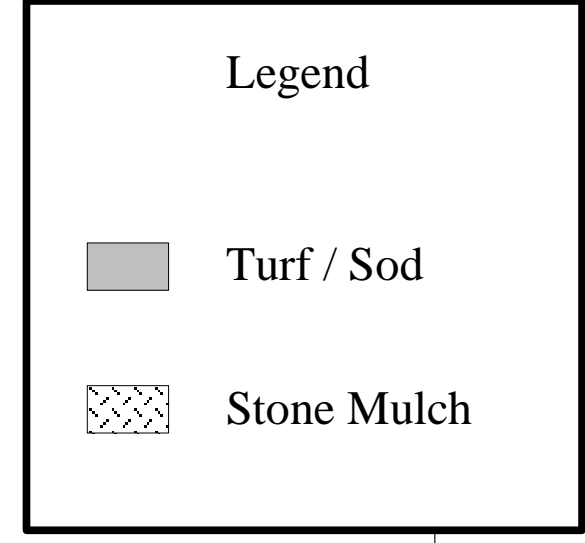
4
A1.5
Coniferous Tree in Lawn
1:25



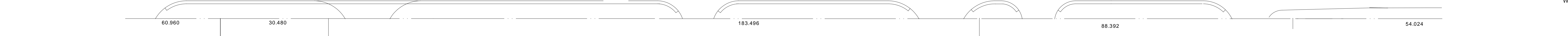
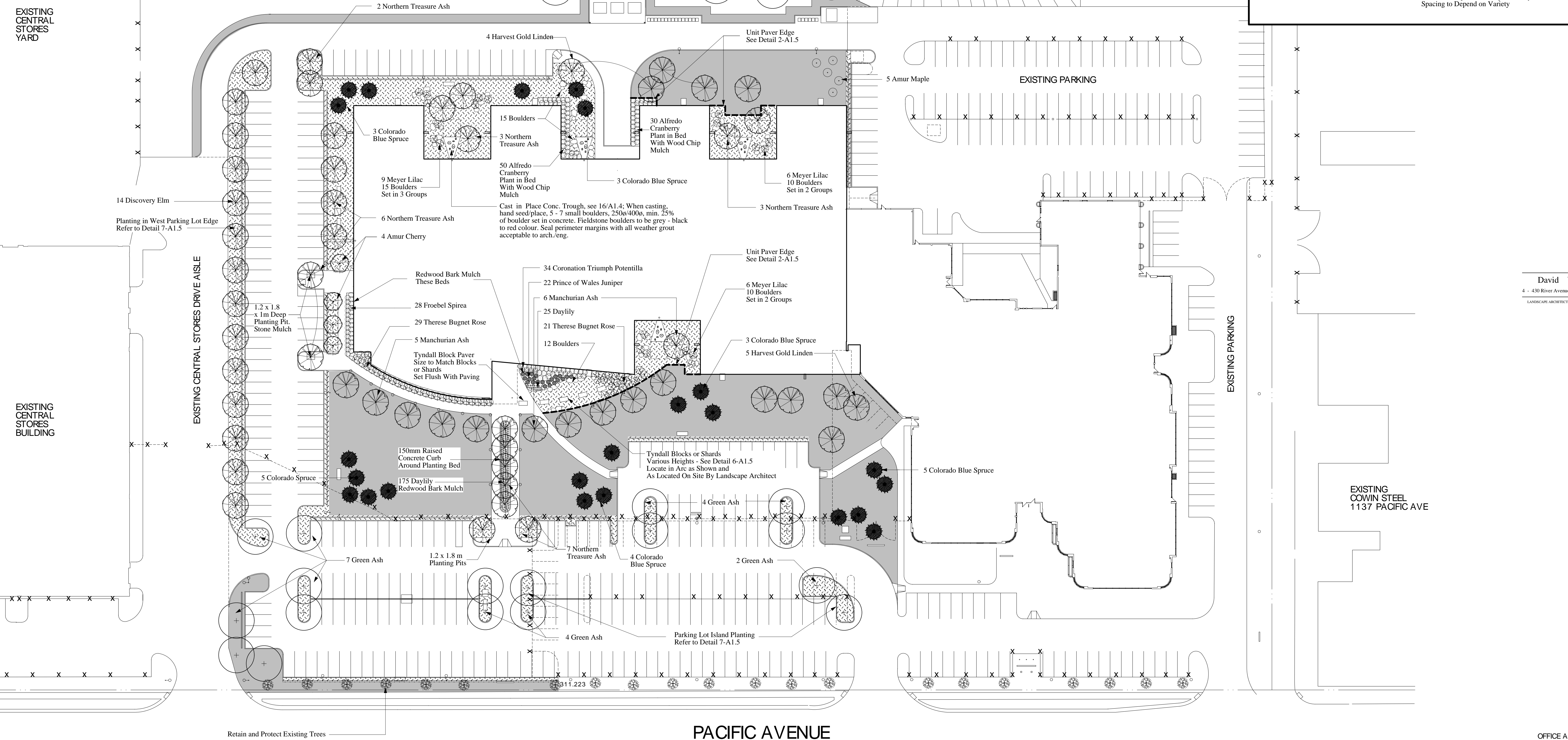
5
A1.5
Typical Shrub Planting
1:25



6
A1.5
Tyndall Block or Shard Installation Detail
1:25



7
A1.5
Planting Detail - Parking Lot Islands
1:25



1
A1.5
Landscape Plan
1:400