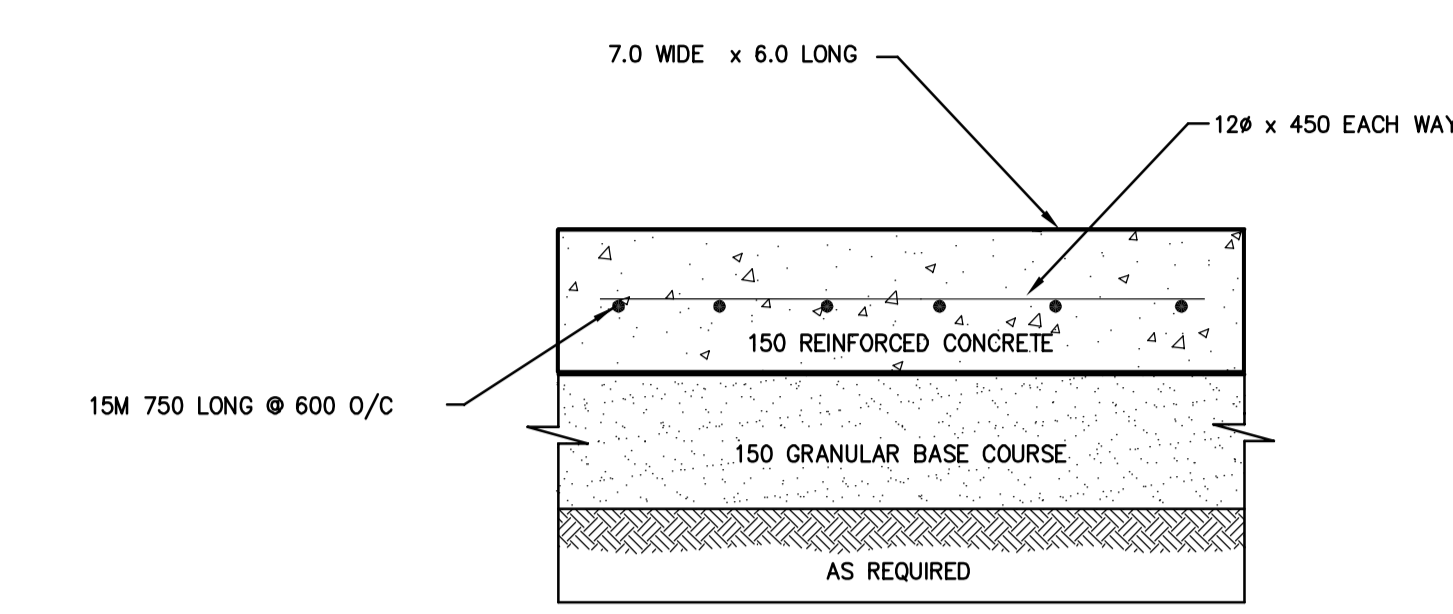


- NOTES**
1. ALL MATERIALS SUPPLIED & MUNICIPAL SERVICES INSTALLATIONS SHALL BE ACCORDANCE TO THE LATEST EDITION OF THE CITY OF WINNIPEG STANDARD CONSTRUCTION SPECIFICATIONS.
 2. BENCHMARK: CWM 36+035, EL. 232.873, 1140 PACIFIC AVENUE
 3. CONTRACTORS SHALL BE RESPONSIBLE FOR CONFIRMING ALL ELEVATIONS PRIOR TO CONSTRUCTION. ANY CONFLICTS OR DISCREPANCIES MUST BE REPORTED TO THE CONSULTANT IMMEDIATELY.
 4. ALL SERVICES SHALL BE OPEN CUT WITH CLASS 2 BEDDING AND BACKFILL UNLESS OTHERWISE NOTED.
 5. WASTEWATER SEWER PIPE SHALL BE PVC, DR-35.
 6. ALL CATCHBASIN LEADS SHALL BE 250 mm DIAMETER PVC.
 7. CATCHBASINS IN CURBS SHALL BE 30-224, 1800 HT., SD-225, 1800 HT.
 8. PROPOSED PIPE LENGTHS ARE APPROXIMATE ONLY. ACTUAL DIMENSIONS MAY VARY. ALL SERVICE PIPES TO BE CONSTRUCTED TO WITHIN 2.0 m OF BUILDING FOUNDATION. EACH LOCATION AND DEPTH TO BE INDICATED WITH A 2 x 4 STAKE.

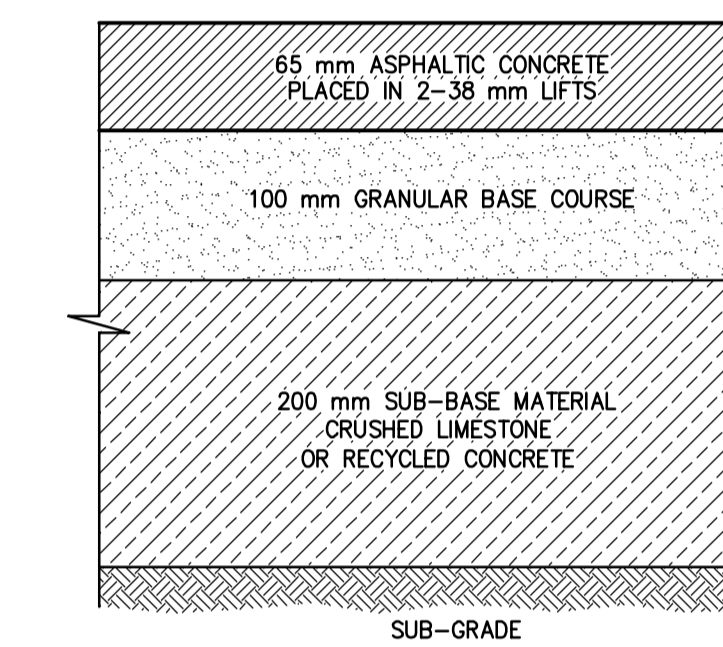
FRIESEN TOKAR ARCHITECTS
 200 - 2033 PORTAGE AVENUE
 WINNIPEG, MANITOBA R3J 0K6
 TEL: 204.883.9323
 FAX: 204.873.7235

DATE: 15 MAY 2024
 PROJECT: 41217

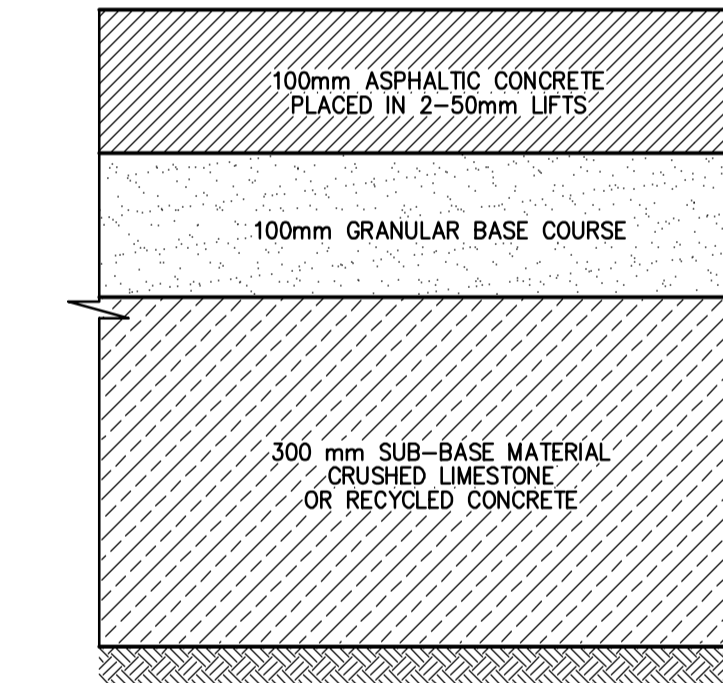
10% DESIGN REVIEW SUBMISSION: 05.02.24
 20% DESIGN REVIEW SUBMISSION: 05.02.24
 30% DESIGN REVIEW SUBMISSION: 05.02.24
 40% DESIGN REVIEW SUBMISSION: 05.02.24
 60% DESIGN REVIEW SUBMISSION: 05.02.24



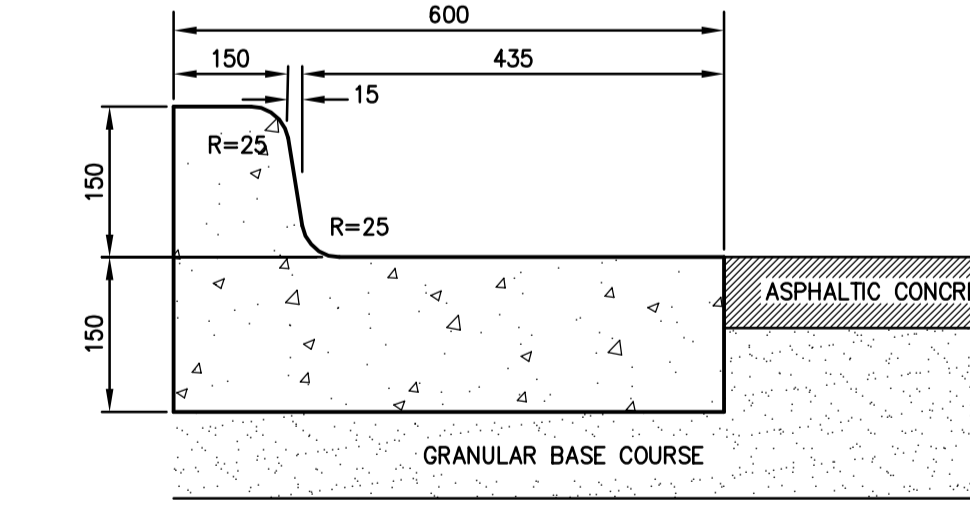
CONCRETE GARBAGE PAD
(WASTE/RECYCLING AREAS)
NTS



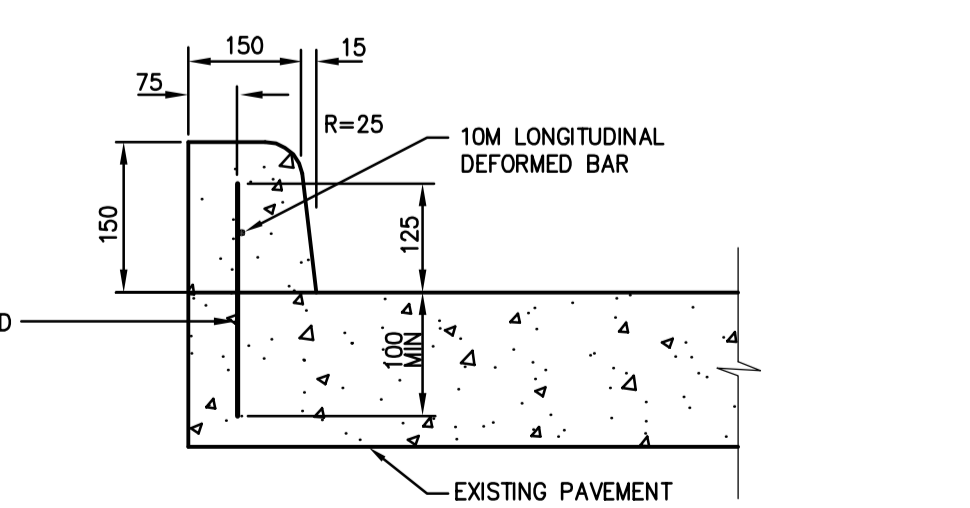
LIGHT DUTY ASPHALT PAVEMENT
(PARKING STALLS)
NTS



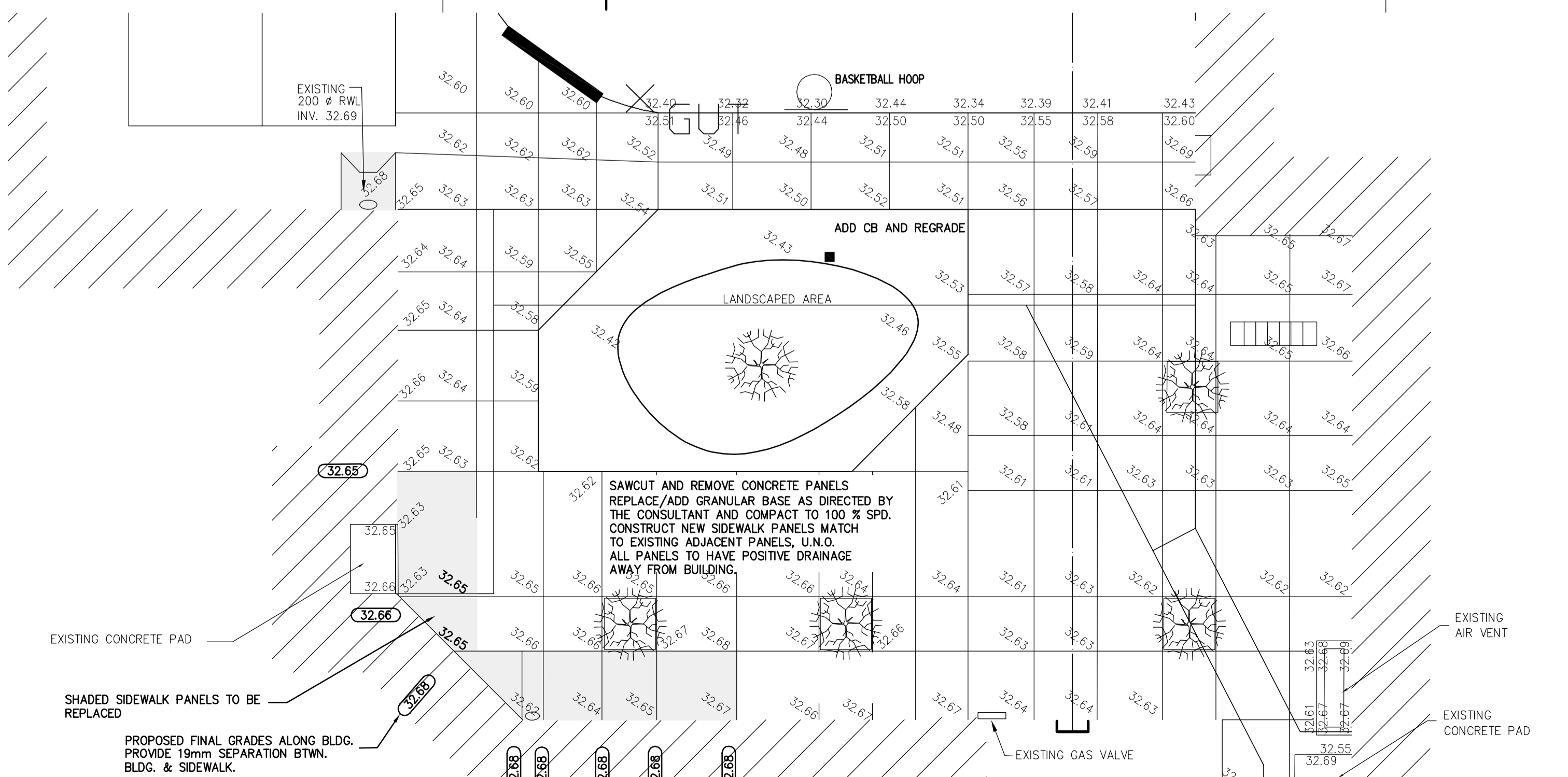
HEAVY DUTY ASPHALT PAVEMENT
(ROADWAYS)
NTS



BARRIER CURB & GUTTER
(SD-200)
NTS



BARRIER CURB (DOWELLED)
(SD-205)
NTS



DETAIL A
1:100

PROPERTY LINE	ELEVATION	CH2000			
PROPERTY LINE	ELEVATION	CH2000			
FUTURE L/S					
WATERMAIN					
HYDRANT					
VALVE					
LAND DRAINAGE SEWER					200 CONCRETE
WASTE WATER SEWER					LIGHT DUTY ASPHALT
MANHOLE					HEAVY DUTY ASPHALT
CATCH BASIN					
FLOW					
EXISTING	LEGEND-PLAN	PROPOSED	EXISTING	LEGEND-PLAN	PROPOSED
					CURB AND GUTTER

GEODETIC : 200.00
METRIC
 WHOLE NUMBERS INDICATE MILLIMETRES
 DECIMALIZED NUMBERS INDICATE METRES

NSLEA Engineers & Planners Inc.
 Suite 111-93 Lombard Avenue Winnipeg, Manitoba R3B 3B1
 Phone (204) 943-3178 Facsimile (204) 943-6948
 SCALE 1:400

THE CITY OF WINNIPEG
 OFFICE ADDITION AND RENOVATION
 1155 PACIFIC AVENUE
 WINNIPEG, MANITOBA

FRIESEN TOKAR ARCHITECTS

1155 PACIFIC AVENUE
 WINNIPEG, MANITOBA
A1.2