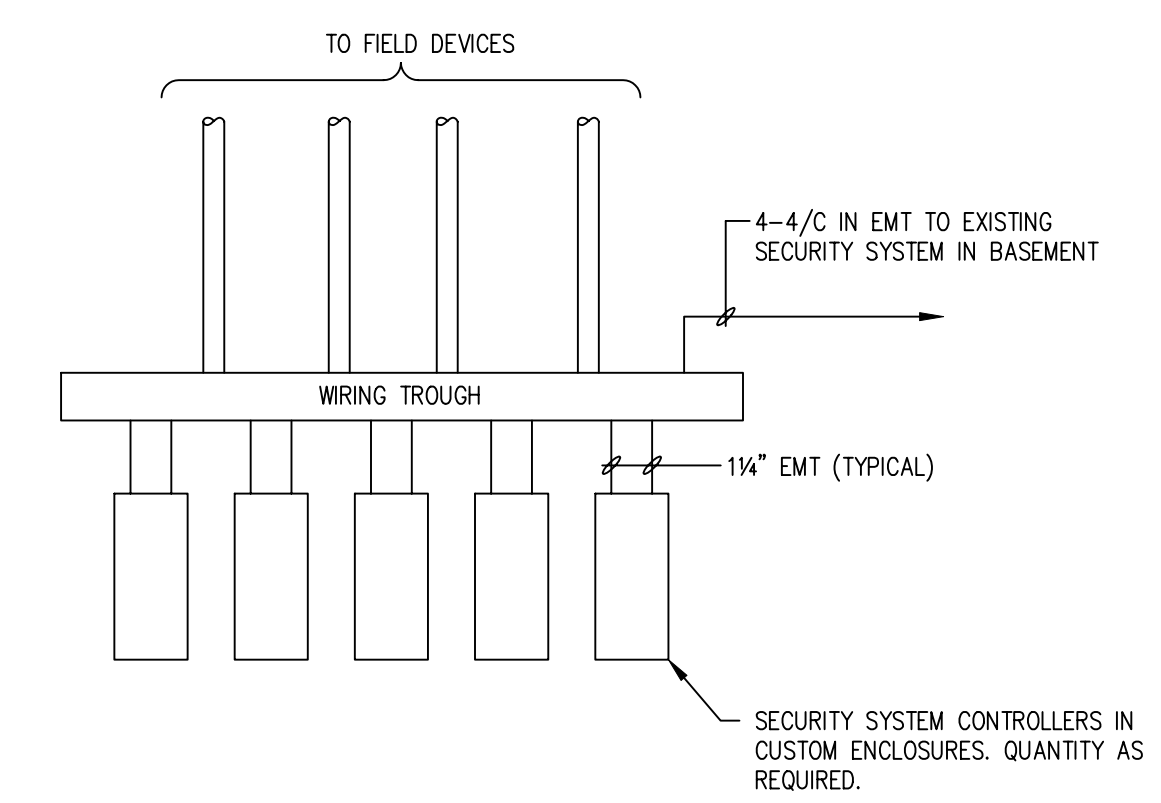
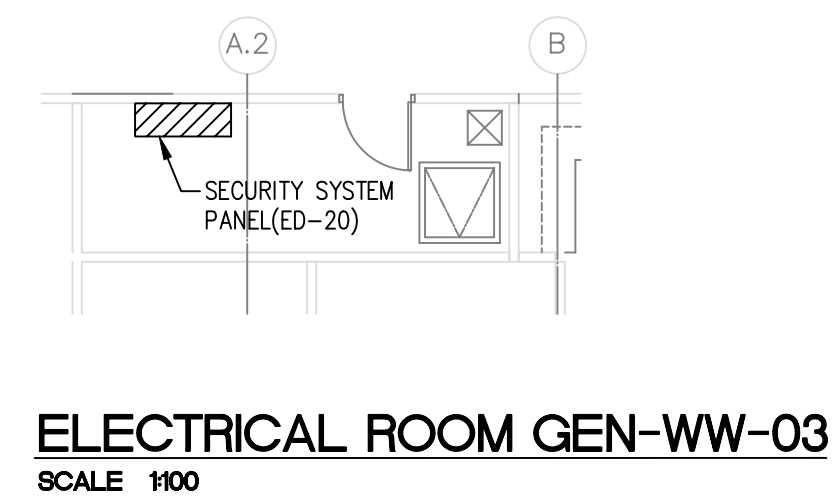


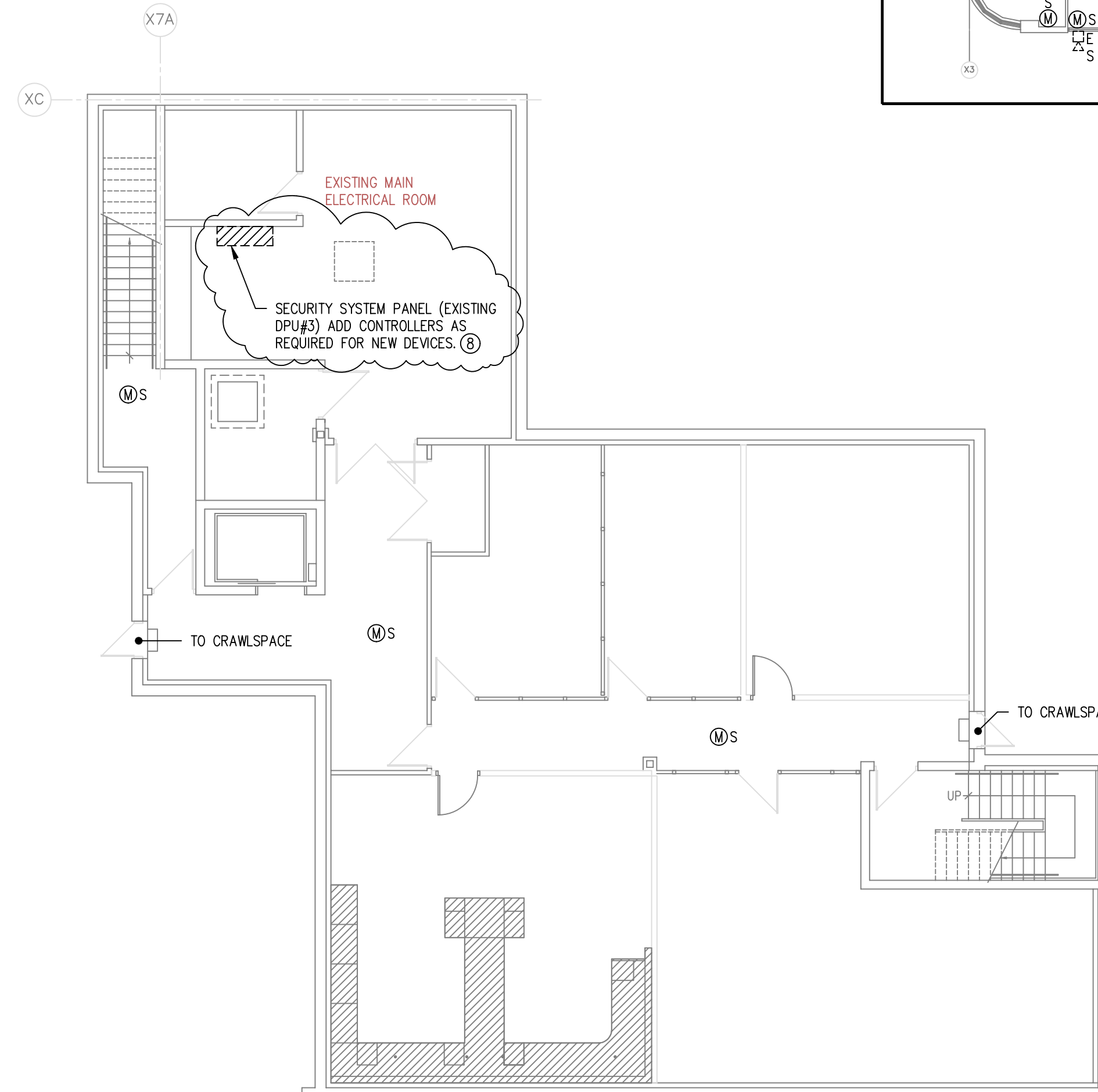
**MAIN FLOOR PLAN**  
SCALE 1/200



**SECURITY SYSTEM PANEL - GEN-WW-03**  
NTS  
\*PROVIDE 347V-120V CONTROL TRANSFORMER TO PROVIDE EMERGENCY POWER TO SYSTEM.



**ELECTRICAL ROOM GEN-WW-03**  
SCALE 1/100



**BASEMENT PLAN (ZONE 13)**  
SCALE 1/100

**SYMBOL LEGEND - SECURITY SYSTEM**

⊙	DOOR CONTACT - SECURITY SYSTEM C/W 4/C #22 TO SECURITY PANEL
⊠	CONTROL PANEL - SECURITY SYSTEM
⊡	KEY PAD - SECURITY SYSTEM C/W 4/C #22 TO SECURITY PANEL
⊢	KEYSWITCH - SECURITY SYSTEM C/W 12/C #22 TO SECURITY PANEL
⊣	HORN - SECURITY SYSTEM C/W 4/C #18 TO SECURITY PANEL
⊤	MOTION SENSOR - SECURITY SYSTEM C/W 8/C #22 TO SECURITY PANEL
⊥	ADJACENT TO SYMBOL DENOTES "EXISTING DEVICES TO REMAIN"
⊦	ADJACENT TO SYMBOL DENOTES "EXISTING TO BE REMOVED"
⊧	KEY BY-PASS SWITCH C/W ARMED (RED) DISARMED (GREEN) LEDS AND SONOLERT BUZZER CARD ACCESS SYSTEM. "m" DENOTES MULLION MOUNTED

- GENERAL NOTES:
1. ALL WIRING IS MINIMUM #22, FT-4, IN CONDUIT.
  2. TAGGING OF EACH DEVICE CABLE TO BE LABELED WITH ROOM NUMBER/DEVICES LOCATION.
  3. THE DOOR CONTACT SHOWN (⊙) ARE IN ADDITION TO THE DOOR CONTACTS SHOWN ON OTHER ELECTRICAL PLANS (⊙).
  4. EXISTING KEY "SWITCHES" TO BE REPLACED WITH NEW KEY PADS.
  5. WIRE TYPES INDICATED IN SYMBOL LEGEND ON THIS DRAWING ARE "PER" DEVICE. IE, EACH CABLE IS A HOME RUN IN A COMMON CONDUIT SYSTEM.
  6. TWO KEYPADS, 1 CONNECTED TO EACH SYSTEM SO AS TO DISARM/REARM EACH BUILDING INDEPENDENTLY. (NEW BUILDING/EXISTING BUILDING)
  7. PROVIDE PLASTIC GUARD OVER KEY SWITCH AND KEY PAD HONEYWELL VERSAQUARD #1051A-1000.
  8. EXISTING INTRUSION ALARM SYSTEM HARDWARE TO BE REPLACED WITH NEW AS SPECIFIED TURN OVER EXISTING EQUIPMENT TO OWNER.

Friesen Tokar Architects  
200 - 2033 Portage Avenue  
Winnipeg, Canada R3J 0K6  
Tel. 204.885.9223  
Fax. 204.837.7235

DRAWN BY: AA  
CHECKED BY: CB  
DATE: APRIL 2004  
PROJECT NO.: 01716  
FILE PATH:

- REVISIONS:
1. ISSUED FOR PRETENDER REVIEW APRIL, 2004
  2. ISSUED FOR TENDER MAY 14, 2004

REVISIONS:  
R1-ADDENDUM 2: GENERAL REVISION

**SMS ENGINEERING**  
SMS Engineering Ltd. Consulting Engineers  
778 Robinson Street Winnipeg MB Canada R3B 9R9  
Telephone: 204.776.0891 Fax: 204.772.9163  
sms@smseng.com

02-018-01

ORIGINAL CONTRACT DRAWING SKINNED AND RESEALED BY ANDY LOHBE PENGL MAY 13, 2004

**APEM**  
Certificate of Authorization  
SMS Engineering Ltd.  
No. 909 Expiry: April 30, 2005

Drawings and specifications, as instruments of service are the property of the architect. The copyright in the same being reserved to the architect and when made, must bear his name. All rights to be retained by the architect.  
The contractor shall verify dimensions and data noted herein with conditions on the site and be held responsible for reporting any discrepancies to the architect for adjustment.  
This drawing shall not be used for building purposes until counterchecked by:

**THE CITY OF WINNIPEG**

PROJECT FILE:

OFFICE ADDITION AND RENOVATIONS  
1155 PACIFIC AVENUE  
WINNIPEG, MANITOBA

**FRIESEN TOKAR ARCHITECTS**

MAIN FLOOR PLAN  
SECURITY SYSTEM  
**E2.9R1**