

Priesen Tokar Architects
200 - 2033 Portage Avenue
Winnipeg, Canada R3J 0K8
Tel. 204.855.9223
Fax. 204.831.7235

DRAWN BY: AA/RC
CHECKED BY: CB
DATE: APRIL 2004
PROJECT NO.: 01716
FILE NAME:
REVISIONS:
1. ISSUED FOR 50% REVIEW
FEBRUARY 4, 2004
2. ISSUED FOR 70% REVIEW
MARCH 5, 2004
3. ISSUED FOR PRETENDER REVIEW
APRIL, 2004
4. ISSUED FOR TENDER
MAY 14, 2004

REVISIONS:
R1-ADDENDUM 2: GENERAL
REVISION

SMS ENGINEERING
SMS Engineering Ltd. Consulting Engineers
770 St. James Street West, Suite 1000, Winnipeg, MB R3B 0P8
Telephone: 204.778.0891 Fax: 204.772.2163
smseng.com

02-018-01
ORIGINAL CONTRACT DRAWING
DRAWN AND SEALED BY
ANDY LOHSE, P.ENG.
MAY 13, 2004

APEGM
Certificate of Authorization
Professional Engineer - P.Eng.
No. 969. Expiry: April 30, 2005

Drawings and specifications, as instruments of service, are the property of the architect and shall remain the property of the architect. No reproduction may be made without the written consent of the architect and where made, must bear his name. All copyright in the drawings and specifications shall vest in the architect. The contractor shall verify dimensions and data noted herein with conditions on the site and be held responsible for reporting any discrepancies to the architect for adjustment. This drawing shall not be used for building purposes until counterchecked by:

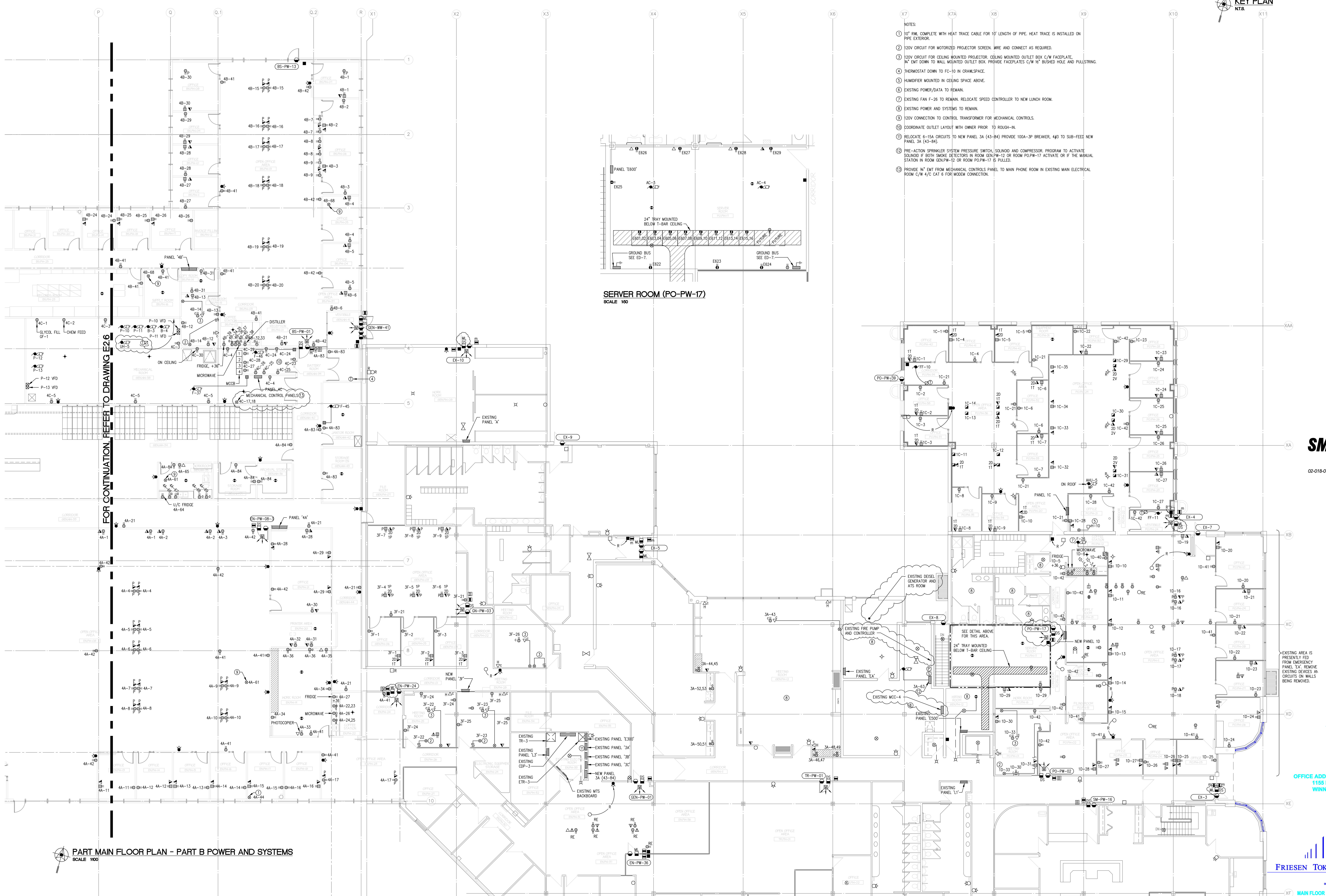
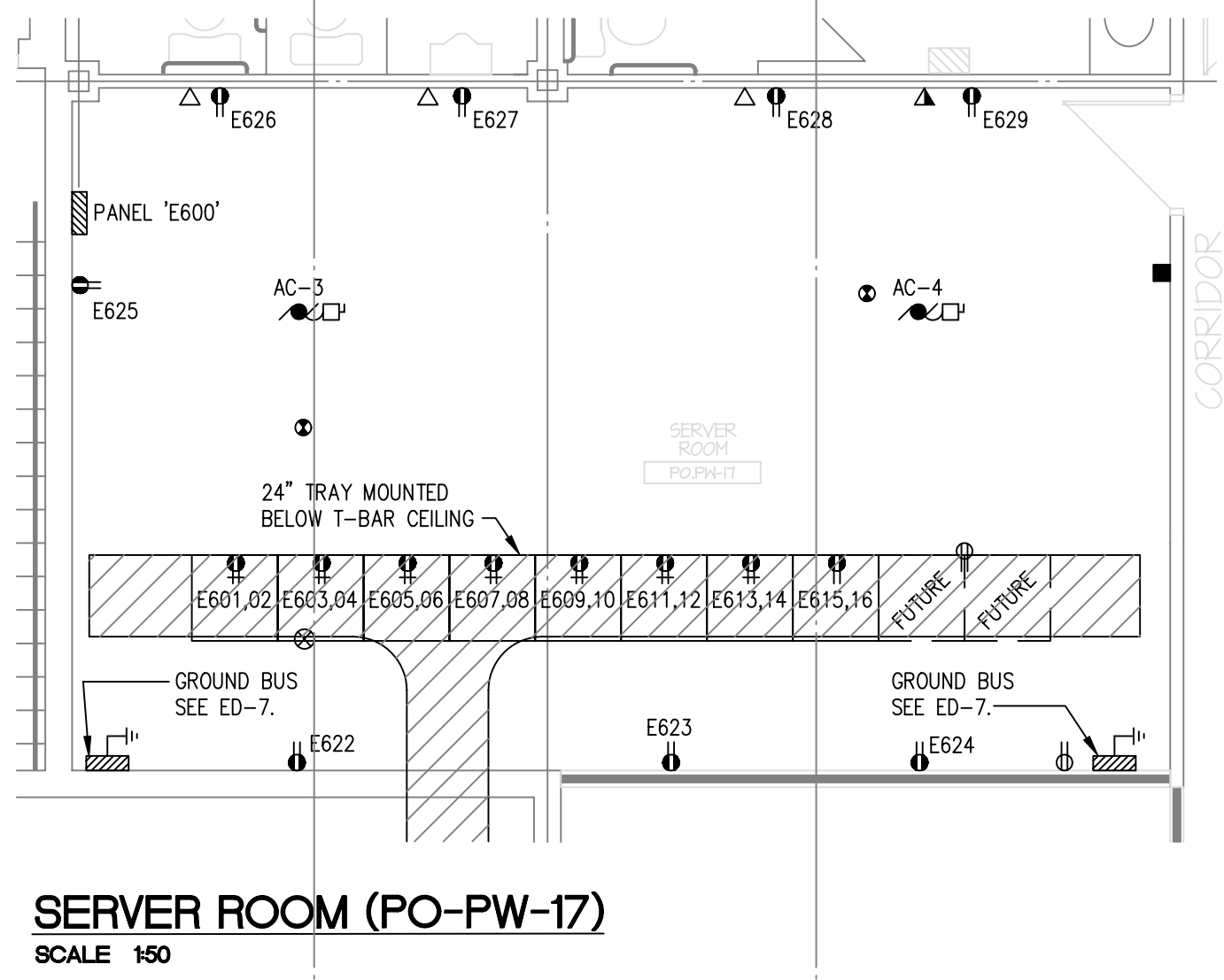
CITY OF WINNIPEG

OFFICE ADDITION AND RENOVATION
1155 PACIFIC AVENUE
WINNIPEG, MANITOBA

FRIESEN TOKAR ARCHITECTS

MAIN FLOOR PLAN
PART B
POWER AND SYSTEMS
E2.7R1

- NOTES:
- 10" RWL COMPLETE WITH HEAT TRACE CABLE FOR 10' LENGTH OF PIPE. HEAT TRACE IS INSTALLED ON PIPE EXTERIOR.
 - 120V CIRCUIT FOR MOTORIZED PROJECTOR SCREEN. WIRE AND CONNECT AS REQUIRED.
 - 120V CIRCUIT FOR CEILING MOUNTED PROJECTOR. CEILING MOUNTED OUTLET BOX C/W FACEPLATE. 1/2" DWT DOWN TO WALL MOUNTED OUTLET BOX. PROVIDE FACEPLATES C/W 1/2" BUSHED HOLE AND PULLSTRING.
 - THERMOSTAT DOWN TO FC-10 IN CRANKSPACE.
 - HUMIDIFIER MOUNTED IN CEILING SPACE ABOVE.
 - EXISTING POWER/DATA TO REMAIN.
 - EXISTING FAN F-26 TO REMAIN. RELOCATE SPEED CONTROLLER TO NEW LUNCH ROOM.
 - EXISTING POWER AND SYSTEMS TO REMAIN.
 - 120V CONNECTION TO CONTROL TRANSFORMER FOR MECHANICAL CONTROLS.
 - COORDINATE OUTLET LAYOUT WITH OWNER PRIOR TO ROUGH-IN.
 - RELOCATE 4-15A CIRCUITS TO NEW PANEL 3A (43-84) PROVIDE 100A-3P BREAKER. 4#3 TO SUB-FEED NEW PANEL 3A (43-84).
 - PRE-ACTION SPRINKLER SYSTEM PRESSURE SWITCH, SOLINOID AND COMPRESSOR PROGRAM TO ACTIVATE SOLINOID IF BOTH SMOKE DETECTORS IN ROOM GEN-PW-12 OR ROOM PO-PW-17 ACTIVATE OR IF THE MANUAL STATION IN ROOM GEN-PW-12 OR ROOM PO-PW-17 IS PULLED.
 - PROVIDE 1/2" DWT FROM MECHANICAL CONTROLS PANEL TO MAIN PHONE ROOM IN EXISTING MAIN ELECTRICAL ROOM C/W 4/C CAT 6 FOR MODEM CONNECTION.



PART MAIN FLOOR PLAN - PART B POWER AND SYSTEMS
SCALE 1/100

FOR CONTINUATION, REFER TO DRAWING E2.8

2018e27r2.dwg 6-21-04 10:14:33 am CST