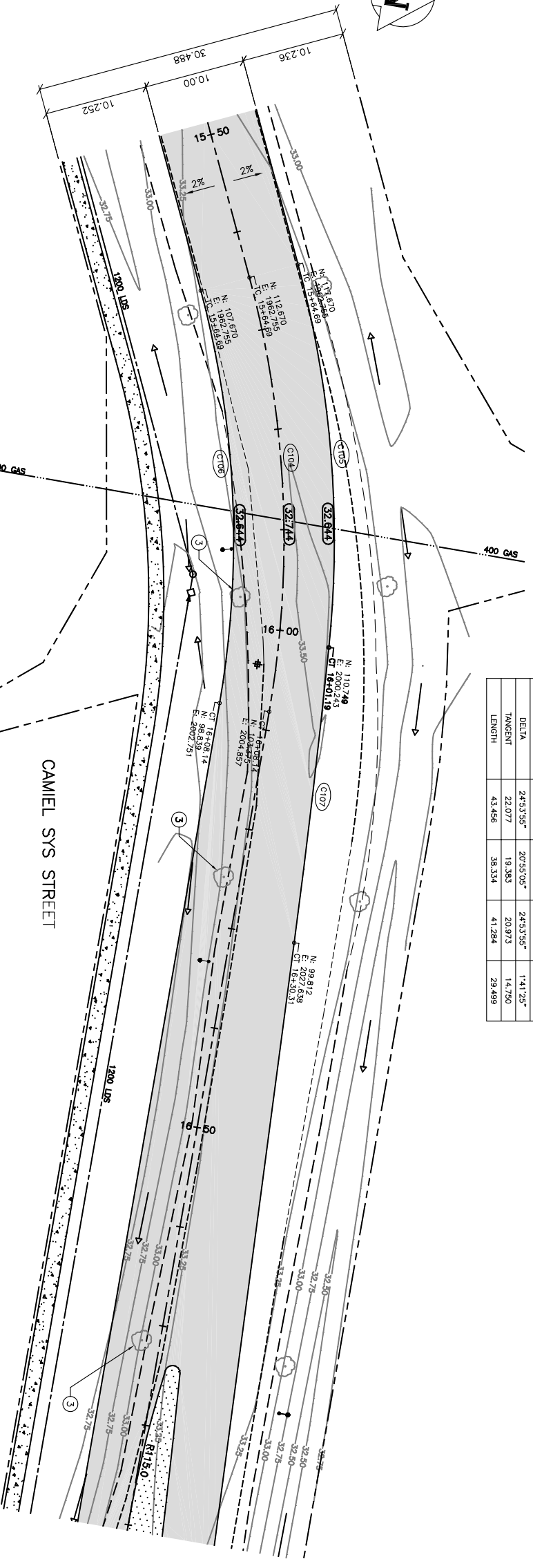


CURVE NO.	C104	C105	C106	C107
RADIUS	100.000	105.000	95.000	1000.000
DELTA	24°53'55"	20°55'05"	24°53'55"	141°25"
TANGENT	22.077	19.383	20.973	14.750
LENGTH	43.456	38.334	41.284	29.499



- CONSTRUCTION NOTES:**
- 1 REMOVE AND DISPOSE OF EXISTING FENCE (INCIDENTAL).
  - 2 EXTEND BARRIER CURB, TIE INTO EXISTING CURB.
  - 3 REMOVE EXISTING TREES.
  - 4 SAWCUT EXISTING EDGE OF SLAB AS DIRECTED BY CONTRACT ADMINISTRATOR.
  - 5 BARRIER CURB TO MODIFIED BARRIER CURB TRANSITION.
  - 6 REMOVE EXISTING BERM.
  - 7 CONNECT TO EXISTING MANHOLE.
  - 8 ALL DIMENSIONS MEASURED TO BACK OF CURB.
  - 9 ADJUST ALL MANHOLES AND VALVES.
  - 10 ALL CATCHBASINS AS PER SD-024 UNLESS OTHERWISE NOTED.
  - 11 PROPOSED CONCRETE SIDEWALK ON 100mm - 19mm DOWN LIMESTONE BASE.
  - 12 250mm - DR35 SEWER SERVICE.
  - 13 27m - 600mm - 1.6mm GAUGE CORRUGATED STEEL PIPE.
  - 14 RAILROAD CROSSING AS PER SD-231A.
  - 15 RAILROAD SIDEWALK CROSSING AS PER SD-231B.
  - 16 PLACE SUITABLE SITE MATERIAL IN EXISTING DITCH AS PER COW 3170-1R4.
  - 17 REMOVE EXISTING CULVERT.
  - 18 LOWER EXISTING CULVERT TO INVERTS SHOWN AND EXTEND 2m S.

NO.	ISSUED FOR BIDDING	DATE	BY	DATE
0	ISSUED FOR BIDDING	04.04.16		

DESIGNED	GMD	CHECKED	BY
DRAWN	GMD/MR4/P/S	APPROVED	BY
HOR. SCALE:	1 : 250	RELEASED FOR CONSTRUCTION	DATE
VERTICAL:	1 : 10		

CONSULTANT DRAWING NO. 031294-01-00

**THE CITY OF WINNIPEG**  
PLANNING, PROPERTY AND DEVELOPMENT

**Wardrop Engineering Inc.**

2004 SAINT BONIFACE INDUSTRIAL PARK ROADWORKS  
CAMEL SYS STREET  
STA. 15+50 TO STA. 16+90

**Winnipeg**

CITY DRAWING NUMBER  
SHEET 11 OF 16  
C0011

**APEGN**  
Certificate of Authorization  
Wardrop Engineering Inc.  
No. 195 Expiry: April 30, 2004