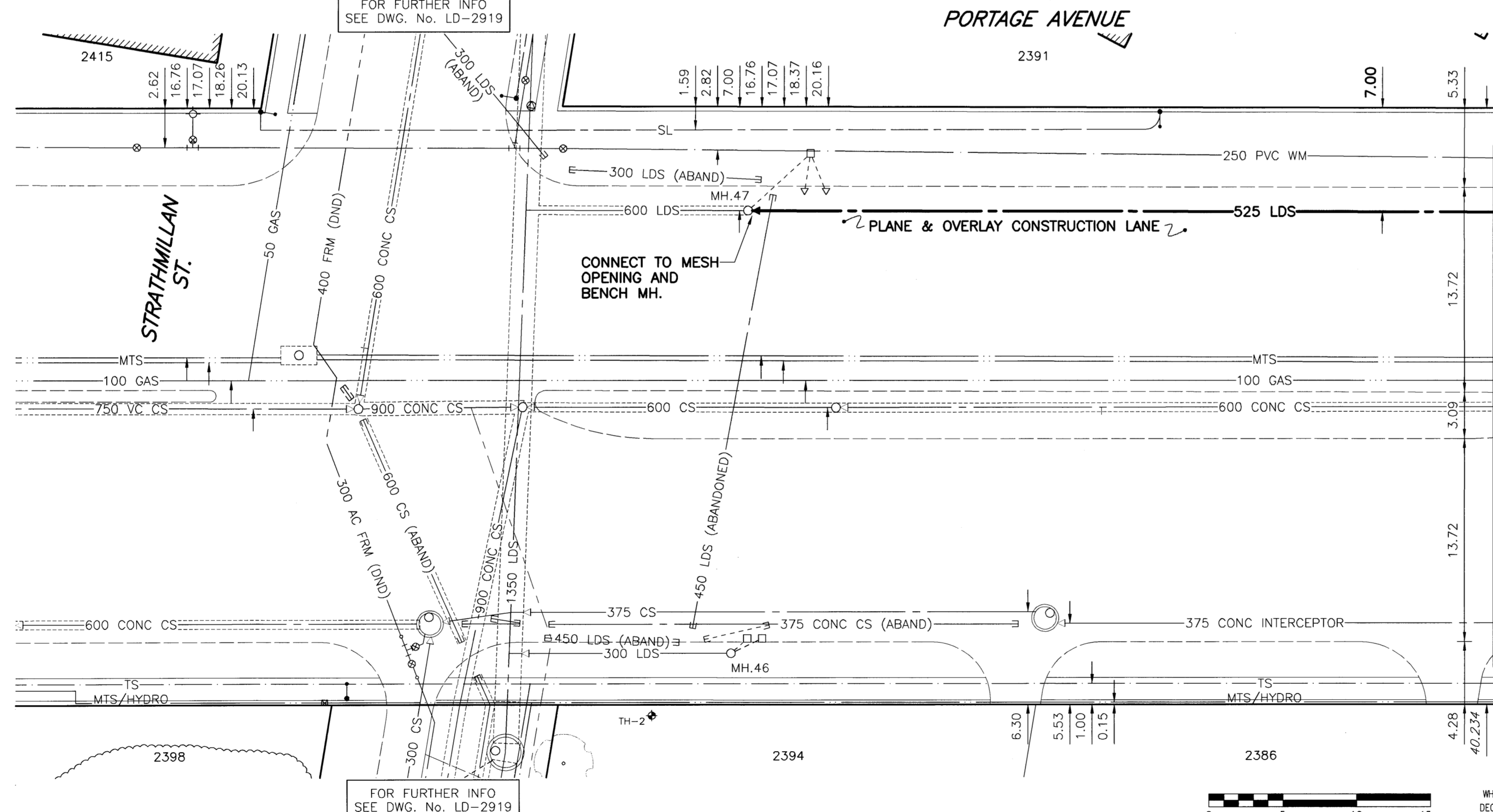
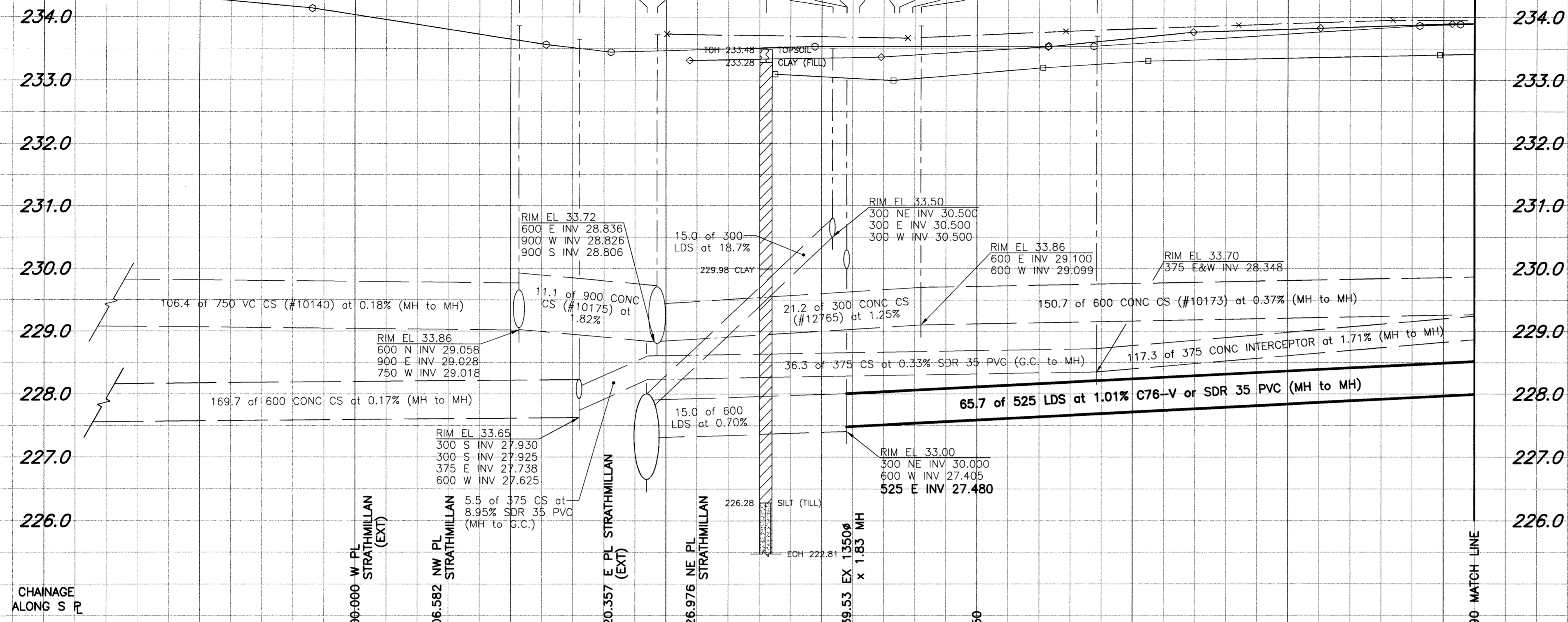


D. SIZE 22" x 34" (558mm x 863mm)

EXISTING FEATURES



WARNING

IF POWER EQUIPMENT OR EXPLOSIVES ARE TO BE USED FOR EXCAVATION ON THIS PROJECT, THE CONTRACTOR MUST:
 1) NOTIFY THE GAS COMPANY OF THE PROPOSED LOCATION OF EXCAVATION.
 2) TAKE PRECAUTION TO AVOID DAMAGE TO GAS COMPANY INSTALLATIONS.
 SEE PROVINCIAL REGULATION 140/92 FOR DETAILS

CONSTRUCTION NOTES:

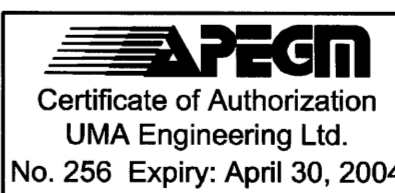
1. For detailed test hole information, see specifications.
2. The location of all services is to be confirmed in the field.
3. Install new sewers and catchbasin leads by trenchless methods wherever possible.
4. Renew/Rehabilitate catchbasins & renew catchbasin leads where noted.

Bid Opportunity No. 142-2004

EXISTING	LEGEND - PLAN	PROPOSED	EXISTING	LEGEND - PROFILE	PROPOSED
150 mm WM	WATERMAIN	150 mm WM	---	HYDRO	---
300 mm LDS	LAND DRAINAGE SEWER	300 mm LDS	---	CONCRETE	---
250 mm WWS	WASTE WATER SEWER	250 mm WWS	---	ASPHALT	---
○	MANHOLE	●	○	CURB STOP	○
□	CATCH BASIN	■	○	REDUCER	○
△	CURB INLET	▲	○	COUPLING	○
▭	CULVERT	▭	○	ANODE	○
+	SURVEY BAR	+	○	WM MONITORING STATION	○
---	PIPE ABANDONMENTS	---	---		---

EXISTING	LEGEND - PROFILE	PROPOSED
---	WATERMAIN	---
---	HYDRANT	---
---	VALVE	---
---	LAND DRAINAGE SEWER	---
---	WASTE WATER SEWER	---
---	C PROFILE	---
---	NORTH/WEST	---
---	SOUTH/EAST	---
---	NORTH/WEST GUTTER	---
---	LAMP STANDARD	---
---	TREE	---

<p>LOCATION APPROVED UNDERGROUND STRUCTURES</p> <p>DATE</p>	
DESIGNED BY	FMI
CHECKED BY	CC
DRAWN BY	ADL
APPROVED BY	<i>[Signature]</i>
HOR. SCALE:	1:250
VERTICAL:	1:50
DATE	04/03/20
DATE	27 March 2014



THE CITY OF WINNIPEG
 WATER AND WASTE DEPARTMENT

STRATHMILLAN/MOORGATE COMBINED SEWER RELIEF CONTRACT 7

PORTAGE AVENUE
 STRATHMILLAN RD.
 to 2.0m W of DAVIDSON ST.

SHEET 01 OF 09
 CITY DRAWING NUMBER LD-3000
 REV

PLOT SCALE: 1:0.25
 FILE: P0001PR_R-DWG 2004-03-17 10:59am ADL