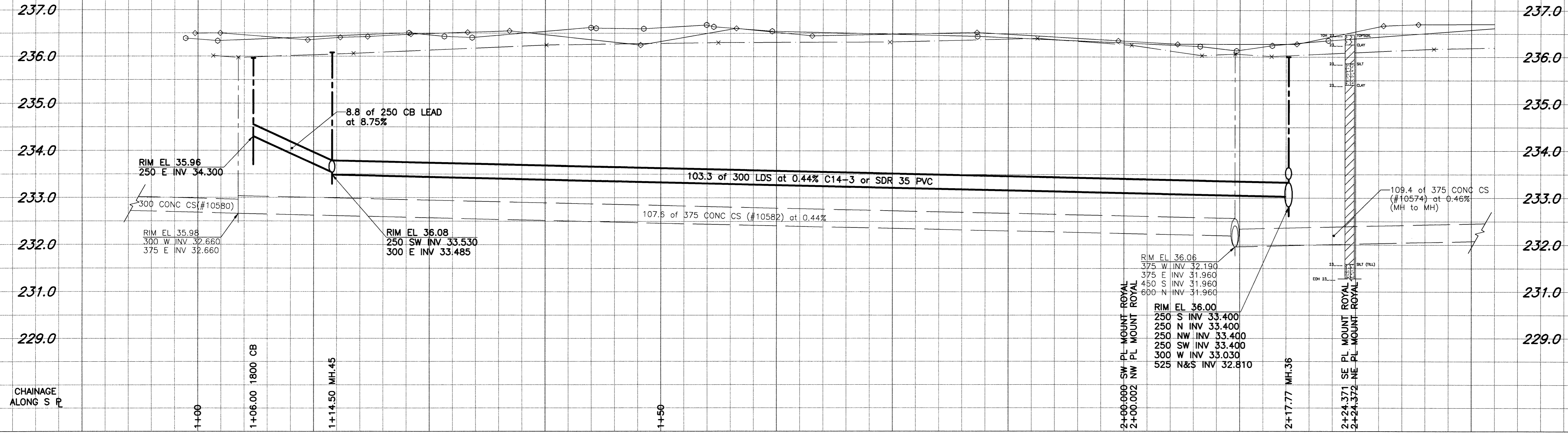
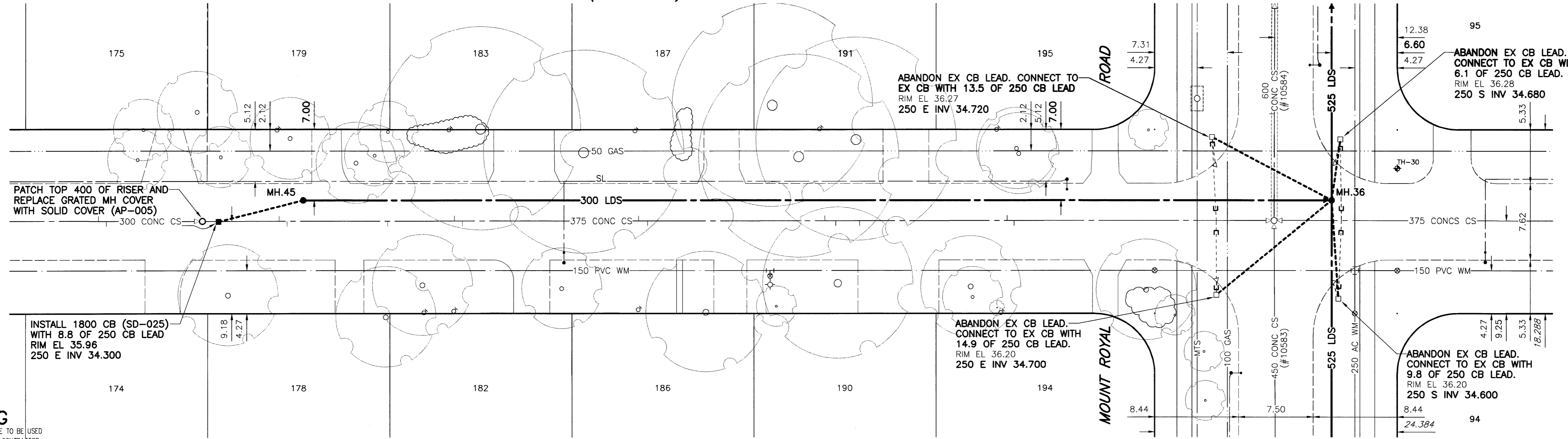


D SIZE 22" x 34" (558mm x 863mm)
 PLOT SCALE: 1:0.25
 UMA FILE NAME: KAN01PR_L-DWG 2004-04-19 3:28pm ADL

EXISTING FEATURES



KANE AVENUE (NORTH LEG)



WARNING
 IF POWER EQUIPMENT OR EXPLOSIVES ARE TO BE USED FOR EXCAVATION ON THIS PROJECT, THE CONTRACTOR MUST:
 1) NOTIFY THE GAS COMPANY OF THE PROPOSED LOCATION OF EXCAVATION.
 2) TAKE PRECAUTION TO AVOID DAMAGE TO GAS COMPANY INSTALLATIONS.
 SEE PROVINCIAL REGULATION 140/92 FOR DETAILS

- CONSTRUCTION NOTES:**
- For detailed test hole information, see specifications.
 - The location of all services is to be confirmed in the field.
 - Install new sewers and catchbasin leads by trenchless methods wherever possible.
 - Renew/Rehabilitate catchbasins & renew catchbasin leads where noted.

FOR FURTHER INFO SEE DWG. No. LD-2950

METRIC
 WHOLE NUMBERS INDICATE MILLIMETRES
 DECIMALIZED NUMBERS INDICATE METRES

APECM
 Certificate of Authorization
 UMA Engineering Ltd.
 No. 256 Expiry: April 30, 2004

150 mm WM	WATERMAIN	150 mm WM	HYDRO	150 mm WM	WATERMAIN
	HYDRANT		MTS		HYDRANT
	VALVE		GAS		VALVE
	LAND DRAINAGE SEWER		CONCRETE		LAND DRAINAGE SEWER
	WASTE WATER SEWER		ASPHALT		WASTE WATER SEWER
	MANHOLE		CURB STOP		Q PROFILE
	CATCH BASIN		REDUCER		NORTH/WEST P
	CURB INLET		COUPLING		SOUTH/EAST P
	CULVERT		ANODE		LAMP STANDARD
	SURVEY BAR		WM MONITORING STATION		TREE
	PIPE ABANDONMENTS				
EXISTING	LEGEND - PLAN	PROPOSED	EXISTING	LEGEND - PROFILE	PROPOSED

LOCATION APPROVED UNDERGROUND STRUCTURES

SUPR. U/G STRUCTURES COMMITTEE DATE

NOTE:
 LOCATION OF UNDERGROUND STRUCTURES AS SHOWN ARE BASED ON THE BEST INFORMATION AVAILABLE. BUT NO GUARANTEE IS GIVEN THAT ALL EXISTING UTILITIES ARE SHOWN OR THAT THE GIVEN LOCATIONS ARE EXACT. CONFIRMATION OF EXISTENCE AND EXACT LOCATION OF ALL SERVICES MUST BE OBTAINED FROM THE INDIVIDUAL UTILITIES BEFORE PROCEEDING WITH CONSTRUCTION.

NO.	REVISIONS	DATE	BY

UMA Engineering Ltd.
 Consulting • Engineering • Construction • Management Services

DESIGNED BY: FMI
 CHECKED BY: CCW
 DRAWN BY: ADL
 APPROVED BY: *[Signature]*
 HOR. SCALE: 1:250
 VERTICAL: 1:50
 DATE: 04/04/20

ENGINEER'S SEAL
 PROVINCE OF MANITOBA
 25 APR 04
 C.C. MACEY
 REGISTERED ENGINEER
 CONSULTANT DRAWING NO. 13
 D265-096-03

THE CITY OF WINNIPEG
 WATER AND WASTE DEPARTMENT

STRATHMILLAN/MOORGATE
 COMBINED SEWER RELIEF
 CONTRACT 6

KANE AVENUE (NORTH LEG)
 115m W of MOUNT ROYAL RD.
 to MOUNT ROYAL RD.

SHEET 13 OF 15
 CITY DRAWING NUMBER LD-2958
 REV

Bid Opportunity No. 141-2004