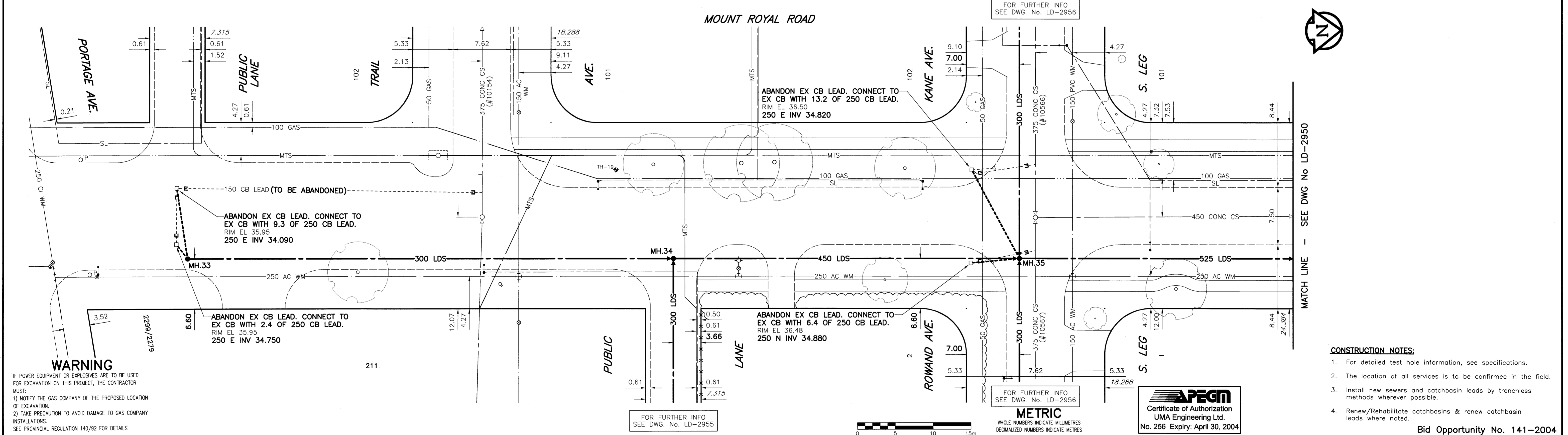
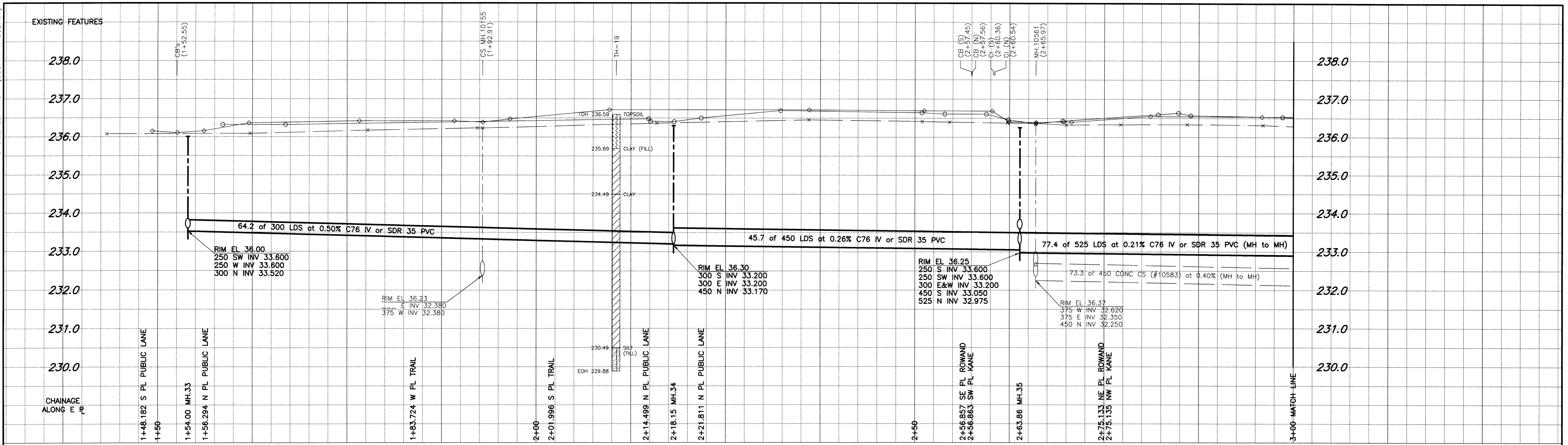


D SIZE 22" x 34" (558mm x 863mm)
 PLOT SCALE: 1:0.25
 UMA FILE NAME: MOUNT_R--DWG 2004-04-19 3:17pm ADL



WARNING
 IF POWER EQUIPMENT OR EXPLOSIVES ARE TO BE USED FOR EXCAVATION ON THIS PROJECT, THE CONTRACTOR MUST:
 1) NOTIFY THE GAS COMPANY OF THE PROPOSED LOCATION OF EXCAVATION.
 2) TAKE PRECAUTION TO AVOID DAMAGE TO GAS COMPANY INSTALLATIONS.
 SEE PROVINCIAL REGULATION 140/92 FOR DETAILS

- CONSTRUCTION NOTES:**
- For detailed test hole information, see specifications.
 - The location of all services is to be confirmed in the field.
 - Install new sewers and catchbasin leads by trenchless methods wherever possible.
 - Renew/Rehabilitate catchbasins & renew catchbasin leads where noted.

EXISTING	LEGEND - PLAN	PROPOSED	EXISTING	LEGEND - PROFILE	PROPOSED
150 mm WM	WATERMAIN	150 mm WM	HYDRANT	150 mm WM	WATERMAIN
300 mm LDS	LAND DRAINAGE SEWER	300 mm LDS	VALVE	300 mm LDS	LAND DRAINAGE SEWER
250 mm WWS	WASTE WATER SEWER	250 mm WWS	CONCRETE	250 mm WWS	WASTE WATER SEWER
MANHOLE	MANHOLE	CURB STOP	ASPHALT	ASPHALT	ASPHALT
CATCH BASIN	CATCH BASIN	REDUCER	W.M. MONITORING STATION	W.M. MONITORING STATION	W.M. MONITORING STATION
CURB INLET	CURB INLET	COUPLING			
CULVERT	CULVERT	ANODE			
SURVEY BAR	SURVEY BAR				
PIPE ABANDONMENTS	PIPE ABANDONMENTS				

NO.	REVISIONS	DATE	BY

UMA Engineering Ltd.
 Consulting • Engineering • Construction • Management Services

DESIGNED BY: FMI
 DRAWN BY: ADL
 HOR. SCALE: 1:250
 VERT. SCALE: 1:50
 DATE: 04/04/20

CHECKED BY: CCM
 APPROVED BY: [Signature]
 RELEASED FOR CONSTRUCTION: [Signature]
 DATE: 04/04/20

APCCM
 Certificate of Authorization
 UMA Engineering Ltd.
 No. 256 Expiry: April 30, 2004

ENGINEER'S SEAL
 PROVINCE OF MANITOBA
 C.C. MACEY
 REGISTERED ENGINEER
 CONSULTANT DRAWING NO. 04
 D265-096-03

THE CITY OF WINNIPEG
 WATER AND WASTE DEPARTMENT

STRATHMILLAN/MOORGATE
 COMBINED SEWER RELIEF
 CONTRACT 6
 MOUNT ROYAL ROAD
 N PL PORTAGE AVE.
 to 30m S of ROWAND AVE. (N. LEG)

SHEET 04 OF 15
 CITY DRAWING NUMBER LD-2949
 REV

Bid Opportunity No. 141-2004