

D SIZE 22" x 34" (558mm x 863mm)  
 PLOT SCALE: 1:0.25  
 UMA FILE NAME: LD002PR\_R-DWG 2004-04-19 3:09pm ADL

EXISTING FEATURES

237.0  
236.0  
235.0  
234.0  
233.0  
232.0  
231.0  
230.0  
229.0

6+40 MATCH LINE

6+50

6+53.00 MH.27 (1500Ø x 1.83 BASE)

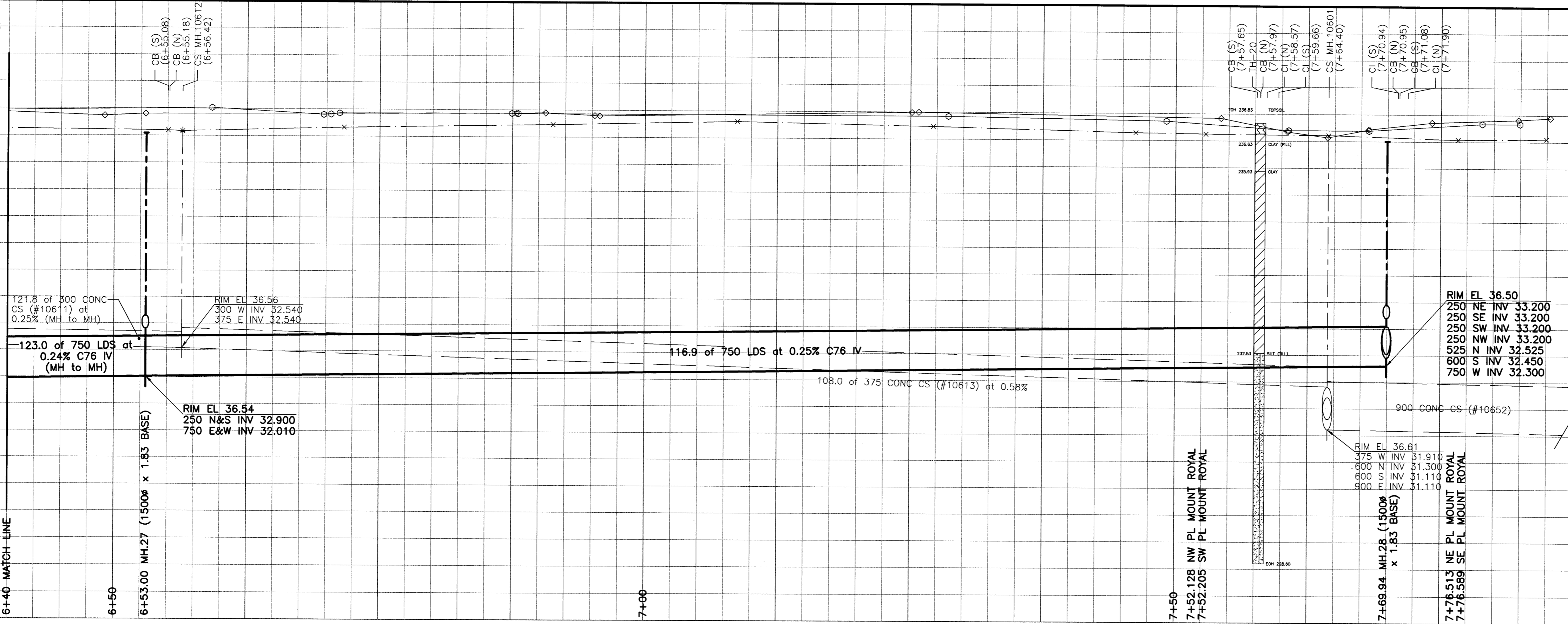
7+00

7+50

7+52.128 NW PL MOUNT ROYAL  
7+52.205 SW PL MOUNT ROYAL

7+69.94 MH.28 (1500Ø x 1.83 BASE)

7+76.513 NE PL MOUNT ROYAL  
7+76.589 SE PL MOUNT ROYAL

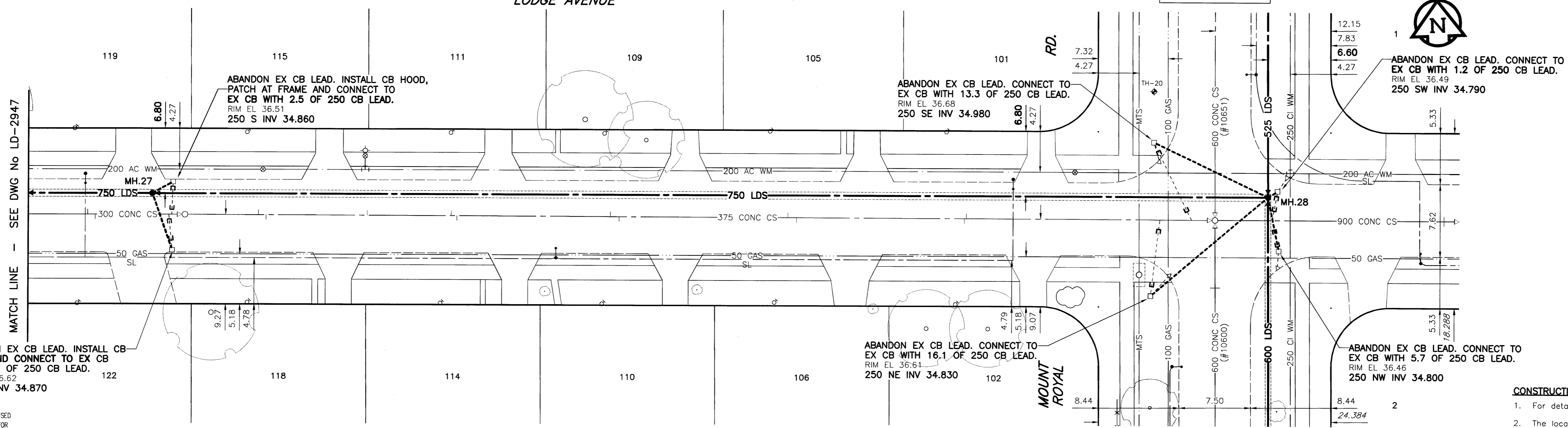


RIM EL 36.50  
250 NE INV 33.200  
250 SE INV 33.200  
250 SW INV 33.200  
250 NW INV 33.200  
525 N INV 32.525  
600 S INV 32.450  
750 W INV 32.300

RIM EL 36.61  
375 W INV 31.910  
600 N INV 31.300  
800 S INV 31.110  
900 E INV 31.110

RIM EL 36.54  
250 N&S INV 32.900  
750 E&W INV 32.010

LODGE AVENUE



**WARNING**  
 IF POWER EQUIPMENT OR EXPLOSIVES ARE TO BE USED FOR EXCAVATION ON THIS PROJECT, THE CONTRACTOR MUST:  
 1) NOTIFY THE GAS COMPANY OF THE PROPOSED LOCATION OF EXCAVATION.  
 2) TAKE PRECAUTION TO AVOID DAMAGE TO GAS COMPANY INSTALLATIONS.  
 SEE PROVINCIAL REGULATION 140/92 FOR DETAILS

- CONSTRUCTION NOTES:**
- For detailed test hole information, see specifications.
  - The location of all services is to be confirmed in the field.
  - Install new sewers and catchbasin leads by trenchless methods wherever possible.
  - Renew/Rehabilitate catchbasins & renew catchbasin leads where noted.

150 mm WM	WATERMAIN	150 mm WM	HYDRO	150 mm WM	WATERMAIN
	HYDRANT		MTS		HYDRANT
	VALVE		GAS		VALVE
	LAND DRAINAGE SEWER		CONCRETE		LAND DRAINAGE SEWER
	WASTE WATER SEWER		ASPHALT		WASTE WATER SEWER
	MANHOLE		CURB STOP		PROFILE
	CATCH BASIN		REDUCER		NORTH/WEST PROFILE
	CURB INLET		COUPLING		SOUTH/EAST PROFILE
	CULVERT		ANODE		LAMP STANDARD
	SURVEY BAR		WM MONITORING STATION		TREE
	PIPE ABANDONMENTS				
EXISTING	LEGEND - PLAN	PROPOSED	EXISTING	LEGEND - PLAN	PROPOSED
			EXISTING	LEGEND - PROFILE	PROPOSED

**LOCATION APPROVED UNDERGROUND STRUCTURES**

SUPR. U/G STRUCTURES COMMITTEE DATE

**NOTE:**  
 LOCATION OF UNDERGROUND STRUCTURES AS SHOWN ARE BASED ON THE BEST INFORMATION AVAILABLE. BUT NO GUARANTEE IS GIVEN THAT ALL EXISTING UTILITIES ARE SHOWN OR THAT THE GIVEN LOCATIONS ARE EXACT. CONFIRMATION OF EXISTENCE AND EXACT LOCATION OF ALL SERVICES MUST BE OBTAINED FROM THE INDIVIDUAL UTILITIES BEFORE PROCEEDING WITH CONSTRUCTION.

NO. REVISIONS DATE BY

**UMA Engineering Ltd.**  
 • Consulting • Engineering • Construction • Management Services

DESIGNED BY: FMI  
 CHECKED BY: CCN  
 DRAWN BY: ADL  
 APPROVED BY: [Signature]  
 HOR. SCALE: 1:250  
 VERTICAL: 1:50  
 DATE: 04/04/20

**APCGM**  
 Certificate of Authorization  
 UMA Engineering Ltd.  
 No. 256 Expiry: April 30, 2004

ENGINEER'S SEAL  
 PROVINCE OF MANITOBA  
 C.C. MACEY  
 REGISTERED ENGINEER

CONSULTANT DRAWING NO. 03  
 D265-096-03

**THE CITY OF WINNIPEG**  
 WATER AND WASTE DEPARTMENT

STRATHMILLAN/MOORGATE  
 COMBINED SEWER RELIEF  
 CONTRACT 6

LODGE AVENUE  
 112m W of MOUNT ROYAL RD.  
 to MOUNT ROYAL RD.

SHEET 03 OF 15  
 CITY DRAWING NUMBER  
 REV  
**LD-2948**

Bid Opportunity No. 141-2004