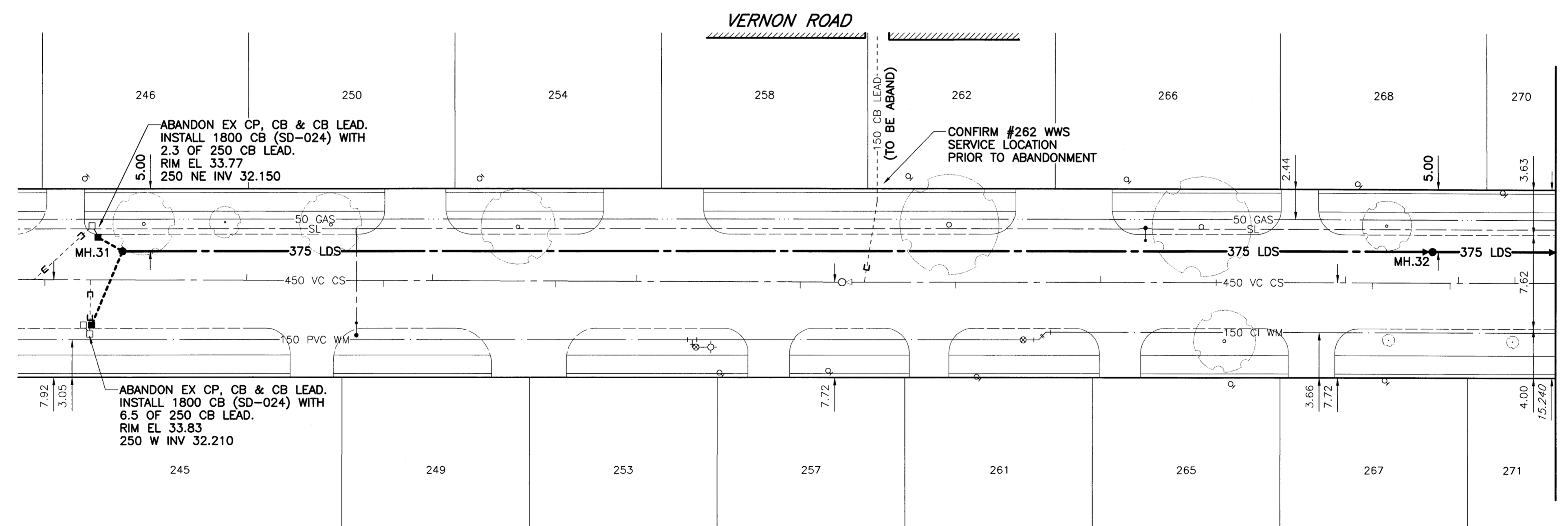
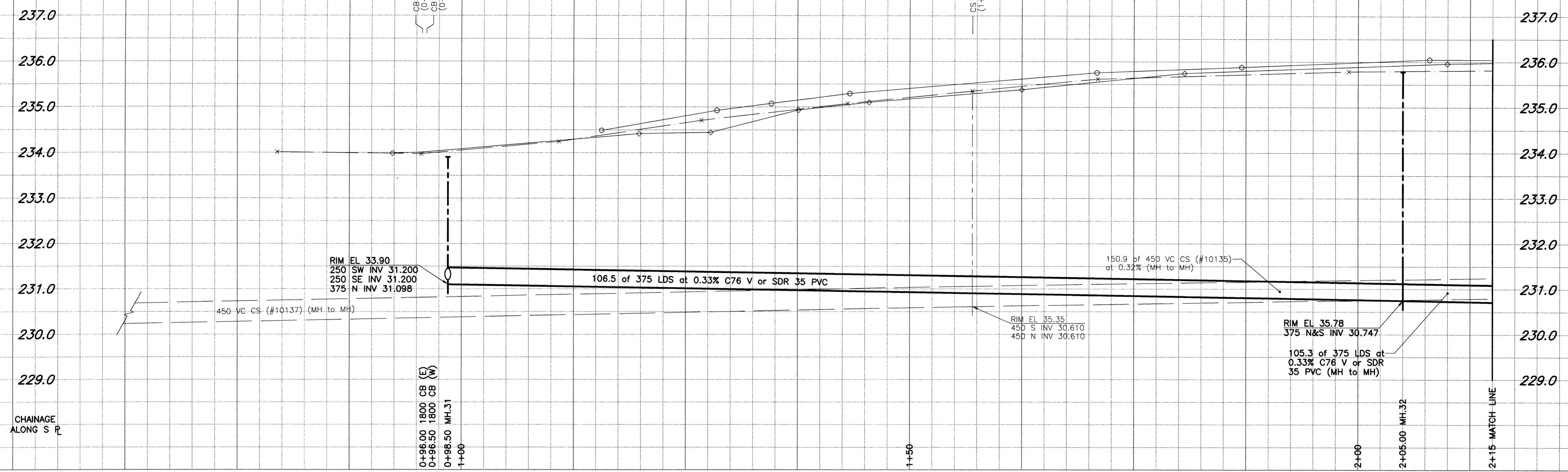


D. SIZE 22" x 34" (558mm x 863mm)

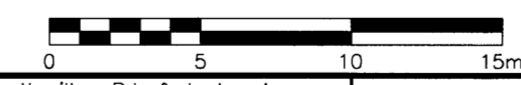
EXISTING FEATURES



MATCH LINE - SEE DWG No LD-2944

WARNING
 IF POWER EQUIPMENT OR EXPLOSIVES ARE TO BE USED FOR EXCAVATION ON THIS PROJECT, THE CONTRACTOR MUST:
 1) NOTIFY THE GAS COMPANY OF THE PROPOSED LOCATION OF EXCAVATION.
 2) TAKE PRECAUTION TO AVOID DAMAGE TO GAS COMPANY INSTALLATIONS.
 SEE PROVINCIAL REGULATION 140/92 FOR DETAILS

- CONSTRUCTION NOTES:**
- For detailed test hole information, see specifications.
 - The location of all services is to be confirmed in the field.
 - Install new sewers and catchbasin leads by trenchless methods wherever possible.
 - Renew/Rehabilitate catchbasins & renew catchbasin leads where noted.



METRIC
 WHOLE NUMBERS INDICATE MILLIMETRES
 DECIMALIZED NUMBERS INDICATE METRES

APEGM
 Certificate of Authorization
 UMA Engineering Ltd.
 No. 256 Expiry: April 30, 2004

150 mm WM	WATERMAIN	150 mm WM	HYDRO	150 mm WM	WATERMAIN
300 mm LDS	LAND DRAINAGE SEWER	300 mm LDS	MTS	300 mm LDS	LAND DRAINAGE SEWER
250 mm WWS	WASTE WATER SEWER	250 mm WWS	GAS	250 mm WWS	WASTE WATER SEWER
Manhole	MANHOLE	Manhole	CURB STOP	Manhole	CURB STOP
Catch Basin	CATCH BASIN	Catch Basin	REDUCER	Catch Basin	REDUCER
Curb Inlet	CURB INLET	Curb Inlet	COUPLING	Curb Inlet	COUPLING
Culvert	CULVERT	Culvert	ANODE	Culvert	ANODE
Survey Bar	SURVEY BAR	Survey Bar	WM MONITORING STATION	Survey Bar	WM MONITORING STATION
Pipe Abandonments	PIPE ABANDONMENTS	Pipe Abandonments		Pipe Abandonments	
Existing	LEGEND - PLAN	Proposed	EXISTING	Proposed	LEGEND - PROFILE

LOCATION APPROVED UNDERGROUND STRUCTURES

DATE

NOTE:
 LOCATION OF UNDERGROUND STRUCTURES AS SHOWN ARE BASED ON THE BEST INFORMATION AVAILABLE. BUT NO GUARANTEE IS GIVEN THAT ALL EXISTING UTILITIES ARE SHOWN OR THAT THE GIVEN LOCATIONS ARE EXACT. CONFIRMATION OF EXISTENCE AND EXACT LOCATION OF ALL SERVICES MUST BE OBTAINED FROM THE INDIVIDUAL UTILITIES BEFORE PROCEEDING WITH CONSTRUCTION.

B.M. 39-058	S.E. Cor. Strathmillan Rd. & Lodge Ave.
ELEV. 236.271m	1.0m x 1.0m x 2.4m iron pipe 3.7m N. of S.L. of Lodge Ave. & on E.L. of Strathmillan Rd.
NO.	REVISIONS
DATE	BY

UMA Engineering Ltd.
 Consulting • Engineering • Construction • Management Services

DESIGNED BY: FMI
 CHECKED BY: CCM
 DRAWN BY: ADL
 APPROVED BY: [Signature]
 HOR. SCALE: 1:250
 VERTICAL: 1:50
 DATE: 02/04/08
 RELEASED FOR CONSTRUCTION
 DATE: 04/04/08

ENGINEER'S SEAL
 PROVINCE OF MANITOBA
 08 APRIL 08
 C.C. MACEY
 REGISTERED ENGINEER
 CONSULTANT DRAWING NO. 18
 D265-096-03

THE CITY OF WINNIPEG
 WATER AND WASTE DEPARTMENT

STRATHMILLAN/MOORGATE COMBINED SEWER RELIEF CONTRACT 5

VERNON ROAD
 215m N of PORTAGE AVE.
 to 85m S of LODGE AVE.

SHEET 18 OF 20
 CITY DRAWING NUMBER LD-2943
 REV

Bid Opportunity No. 140-2004