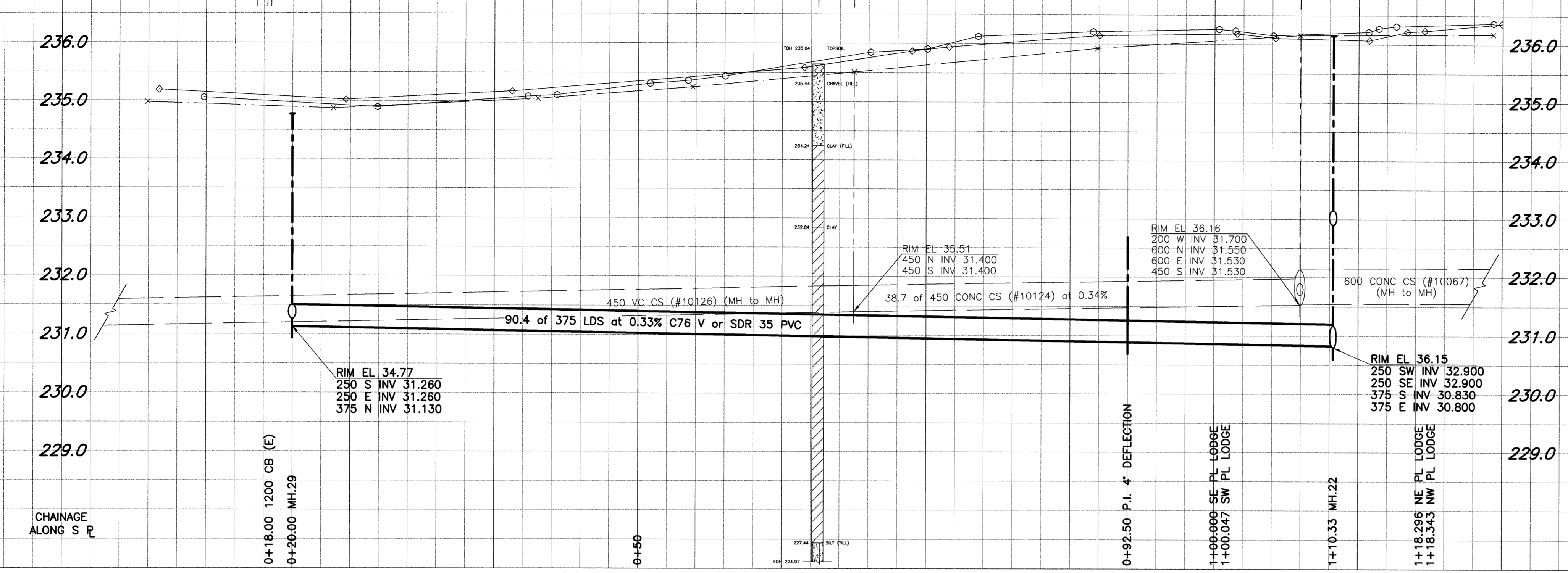
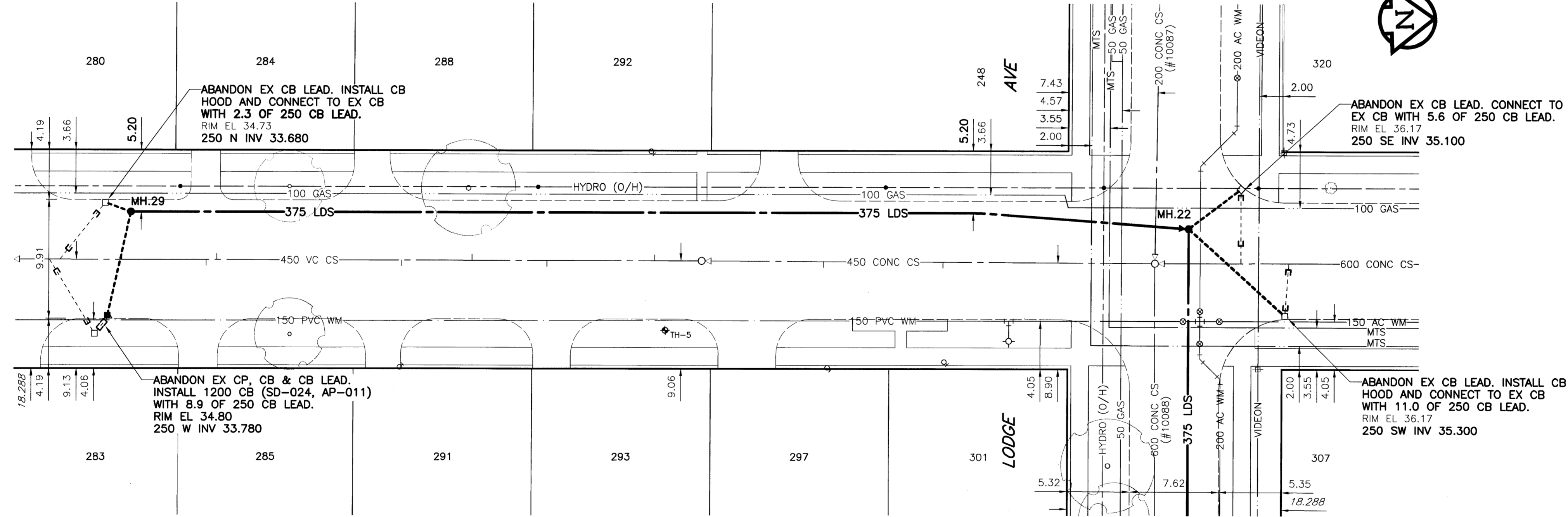


D. SIZE 22" x 34" (558mm x 863mm)

EXISTING FEATURES



WHYTEWOLD ROAD



WARNING
 IF POWER EQUIPMENT OR EXPLOSIVES ARE TO BE USED FOR EXCAVATION ON THIS PROJECT, THE CONTRACTOR MUST:
 1) NOTIFY THE GAS COMPANY OF THE PROPOSED LOCATION OF EXCAVATION.
 2) TAKE PRECAUTION TO AVOID DAMAGE TO GAS COMPANY INSTALLATIONS.
 SEE PROVINCIAL REGULATION 140/92 FOR DETAILS

- CONSTRUCTION NOTES:**
- For detailed test hole information, see specifications.
 - The location of all services is to be confirmed in the field.
 - Install new sewers and catchbasin leads by trenchless methods wherever possible.
 - Renew/Rehabilitate catchbasins & renew catchbasin leads where noted.

METRIC
 WHOLE NUMBERS INDICATE MILLIMETRES
 DECIMALIZED NUMBERS INDICATE METRES

APCM
 Certificate of Authorization
 UMA Engineering Ltd.
 No. 256 Expiry: April 30, 2004

150 mm WM	WATERMAIN	150 mm WM	HYDRO	150 mm WM	WATERMAIN
	HYDRANT		MTS		HYDRANT
	VALVE		CONCRETE		VALVE
	LAND DRAINAGE SEWER		ASPHALT		LAND DRAINAGE SEWER
	WASTE WATER SEWER		CURB STOP		WASTE WATER SEWER
	MANHOLE		REDUCER		MANHOLE
	CATCH BASIN		COUPLING		CATCH BASIN
	CURB INLET		ANODE		CURB INLET
	CULVERT		WM MONITORING STATION		CULVERT
	SURVEY BAR				SURVEY BAR
	PIPE ABANDONMENTS				PIPE ABANDONMENTS
EXISTING	LEGEND - PLAN	PROPOSED	EXISTING	LEGEND - PROFILE	PROPOSED

LOCATION APPROVED UNDERGROUND STRUCTURES

DATE: _____

NOTE: LOCATION OF UNDERGROUND STRUCTURES AS SHOWN ARE BASED ON THE BEST INFORMATION AVAILABLE. BUT NO GUARANTEE IS GIVEN THAT ALL EXISTING UTILITIES ARE SHOWN OR THAT THE GIVEN LOCATIONS ARE EXACT. CONFIRMATION OF EXISTENCE AND EXACT LOCATION OF ALL SERVICES MUST BE OBTAINED FROM THE INDIVIDUAL UTILITIES BEFORE PROCEEDING WITH CONSTRUCTION.

B.M. 39-016
 ELEV. 237.524m

S side Lodge Ave. @ Golden Gate Bay, TdR. in N. Conc foundation of No. 350 Lodge Ave. (Silver Heights Collegiate), 7.6m W. & 0.9m A.G.L. of N.E. Cor. of Collegiate (most Ely. entrance to Collegiate).

UMA Engineering Ltd.
 • Consulting • Engineering • Construction • Management Services

DESIGNED BY: FMI
 CHECKED BY:

DRAWN BY: ADL
 APPROVED BY:

HOR. SCALE: 1:250
 VERTICAL: 1:50

DATE: 04/04/02

ENGINEER'S SEAL
 PROVINCE OF MANITOBA
 C.C. MACEY
 REGISTERED ENGINEER

CONSULTANT DRAWING NO. 15
 D265-096-03

THE CITY OF WINNIPEG
 WATER AND WASTE DEPARTMENT

STRATHMILLAN/MOORGATE
 COMBINED SEWER RELIEF
 CONTRACT 5

WHYTEWOLD ROAD
 90m S of LODGE AVE.
 to LODGE AVE.

SHEET 15 OF 20
 CITY DRAWING NUMBER
 REV

LD-2940

PLOT SCALE: 1:20.25
 UMA FILE NAME: WHY01PR_R-DWG 2004-04-07 2:48pm ADL