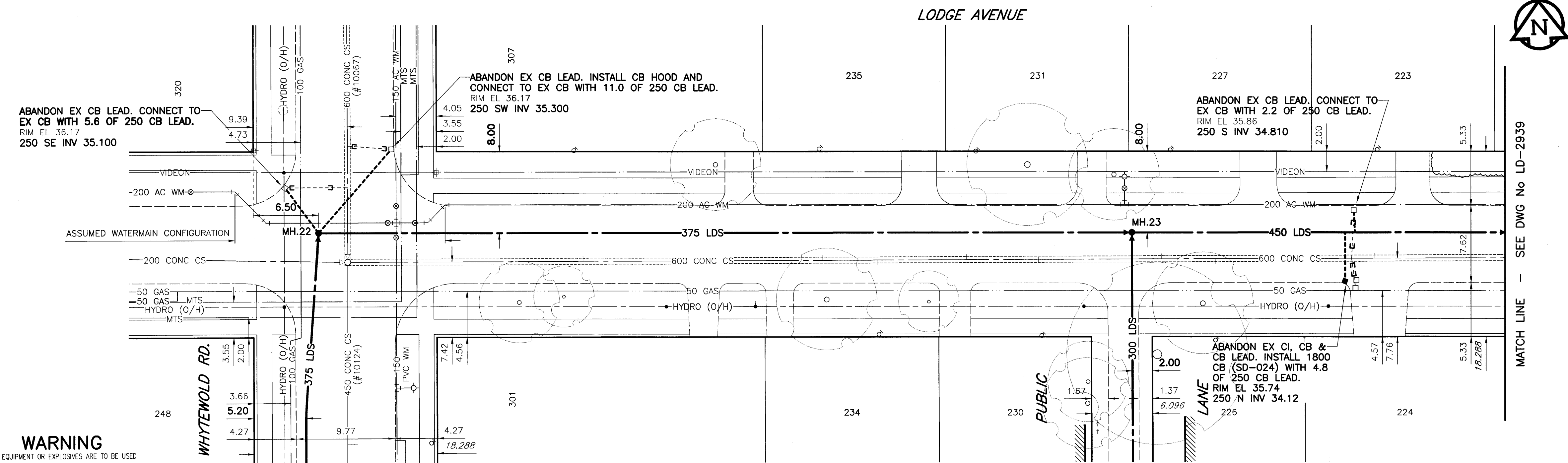
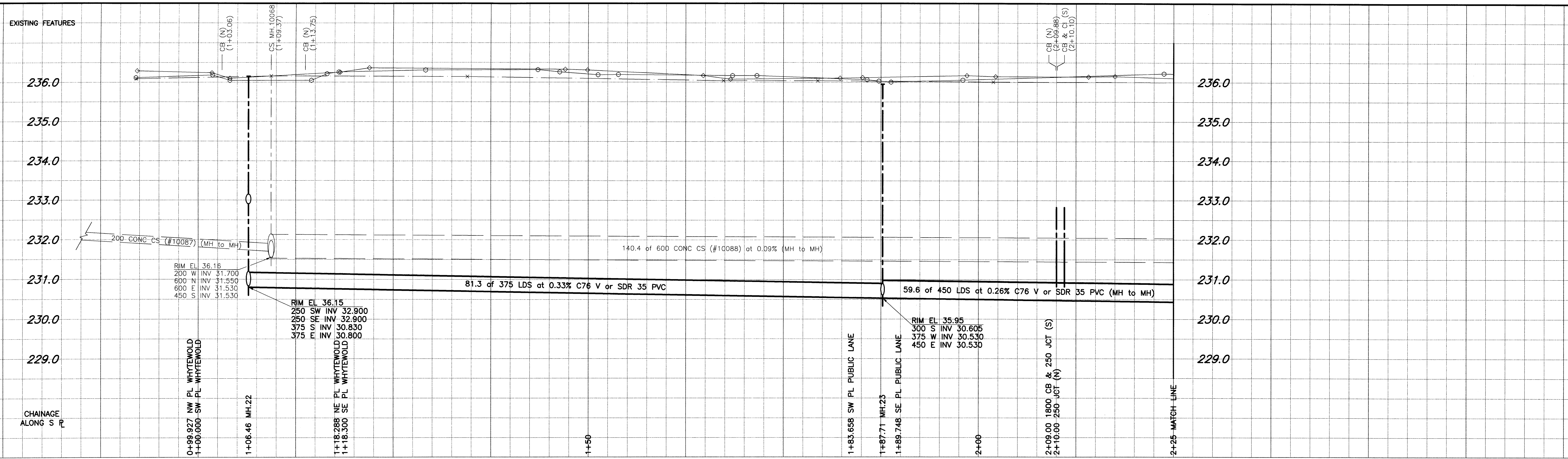


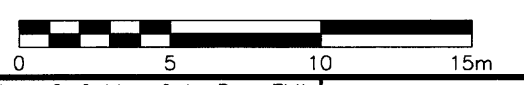
D. SIZE 22" x 34" (558mm x 863mm)



**WARNING**  
 IF POWER EQUIPMENT OR EXPLOSIVES ARE TO BE USED FOR EXCAVATION ON THIS PROJECT, THE CONTRACTOR MUST:  
 1) NOTIFY THE GAS COMPANY OF THE PROPOSED LOCATION OF EXCAVATION.  
 2) TAKE PRECAUTION TO AVOID DAMAGE TO GAS COMPANY INSTALLATIONS.  
 SEE PROVINCIAL REGULATION 140/92 FOR DETAILS

FOR FURTHER INFO SEE DWG. No. LD-2940

FOR FURTHER INFO SEE DWG. No. LD-2942



**METRIC**  
 WHOLE NUMBERS INDICATE MILLIMETRES  
 DECIMALIZED NUMBERS INDICATE METRES

**APCM**  
 Certificate of Authorization  
 UMA Engineering Ltd.  
 No. 256 Expiry: April 30, 2004

- CONSTRUCTION NOTES:**
- For detailed test hole information, see specifications.
  - The location of all services is to be confirmed in the field.
  - Install new sewers and catchbasin leads by trenchless methods wherever possible.
  - Renew/Rehabilitate catchbasins & renew catchbasin leads where noted.
- Bid Opportunity No. 140-2004

150 mm WM	WATERMAIN	150 mm WM	HYDRO	150 mm WM	WATERMAIN
300 mm LDS	LAND DRAINAGE SEWER	300 mm LDS	MTS	300 mm LDS	LAND DRAINAGE SEWER
250 mm WWS	WASTE WATER SEWER	250 mm WWS	GAS	250 mm WWS	WASTE WATER SEWER
MANHOLE		MANHOLE	CURB STOP	MANHOLE	
CATCH BASIN		CATCH BASIN	REDUCER	CATCH BASIN	
CURB INLET		CURB INLET	COUPLING	CURB INLET	
CULVERT		CULVERT	ANODE	CULVERT	
SURVEY BAR		SURVEY BAR	WM MONITORING STATION	SURVEY BAR	
PIPE ABANDONMENTS		PIPE ABANDONMENTS		PIPE ABANDONMENTS	
EXISTING	LEGEND - PLAN	PROPOSED	EXISTING	LEGEND - PROFILE	PROPOSED

**LOCATION APPROVED UNDERGROUND STRUCTURES**

SUPR. U/G STRUCTURES COMMITTEE DATE

**NOTE:**  
 LOCATION OF UNDERGROUND STRUCTURES AS SHOWN ARE BASED ON THE BEST INFORMATION AVAILABLE. BUT NO GUARANTEE IS GIVEN THAT ALL EXISTING UTILITIES ARE SHOWN OR THAT THE GIVEN LOCATIONS ARE EXACT. CONFIRMATION OF EXISTENCE AND EXACT LOCATION OF ALL SERVICES MUST BE OBTAINED FROM THE INDIVIDUAL UTILITIES BEFORE PROCEEDING WITH CONSTRUCTION.

B.M. 39-016 ELEV. 237.524m	S side Lodge Ave. @ Golden Gate Bay, Tbt. in N. Conc foundation of No. 350 Lodge Ave. (Silver Heights Collegiate), 7.5m W. & 0.3m N.E. of N.E. Cor. of Collegiate (most Ely. entrance to Collegiate).		
NO.	REVISIONS	DATE	BY

**UMA Engineering Ltd.**  
 Consulting • Engineering • Construction • Management Services

DESIGNED BY: FMI  
 CHECKED BY: [Signature]  
 DRAWN BY: ADL  
 APPROVED BY: [Signature]  
 HOR. SCALE: 1:250  
 VERTICAL: 1:50  
 DATE: 09/04/08

ENGINEER'S SEAL  
 PROVINCE OF MANITOBA  
 18 April 08  
 C.C. MACEY  
 REGISTERED ENGINEER  
 CONSULTANT DRAWING NO. 13  
 D265-096-03

**THE CITY OF WINNIPEG**  
 WATER AND WASTE DEPARTMENT

STRATHMILLAN/MOORGATE  
 COMBINED SEWER RELIEF  
 CONTRACT 5  
 LODGE AVENUE  
 WHYTEWOLD RD.  
 to 17m W of VERNON RD.

SHEET 13 OF 20  
 CITY DRAWING NUMBER LD-2938  
 REV