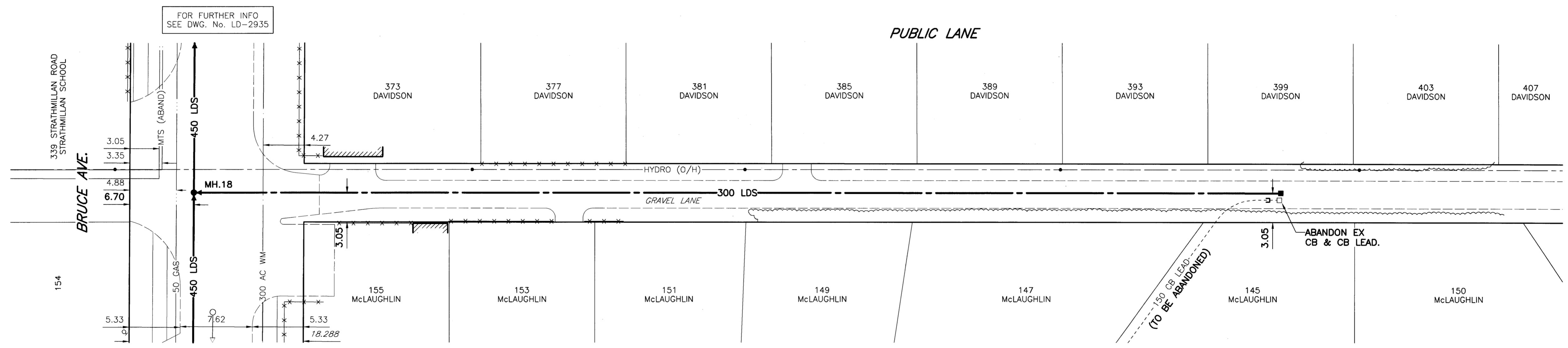
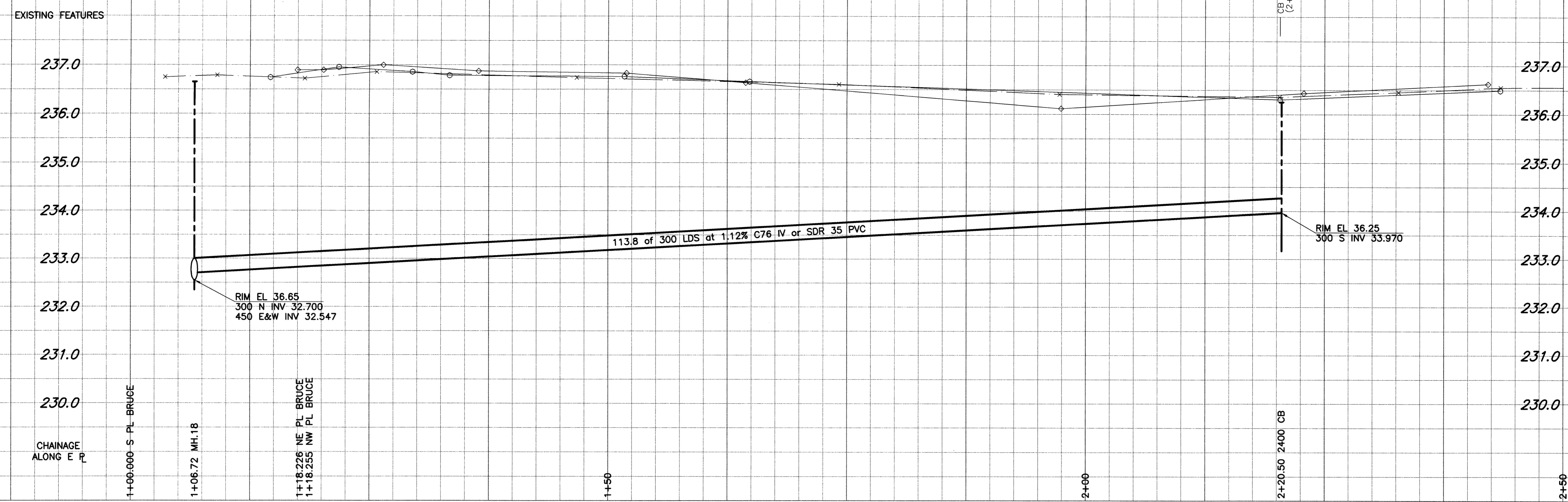


D SIZE 22" x 34" (558mm x 863mm)



FOR FURTHER INFO SEE DWG. No. LD-2935

FOR FURTHER INFO SEE DWG. No. LD-2935

WARNING
 IF POWER EQUIPMENT OR EXPLOSIVES ARE TO BE USED FOR EXCAVATION ON THIS PROJECT, THE CONTRACTOR MUST:
 1) NOTIFY THE GAS COMPANY OF THE PROPOSED LOCATION OF EXCAVATION.
 2) TAKE PRECAUTION TO AVOID DAMAGE TO GAS COMPANY INSTALLATIONS.
 SEE PROVINCIAL REGULATION 140/92 FOR DETAILS

- CONSTRUCTION NOTES:**
- For detailed test hole information, see specifications.
 - The location of all services is to be confirmed in the field.
 - Install new sewers and catchbasin leads by trenchless methods wherever possible.
 - Renew/Rehabilitate catchbasins & renew catchbasin leads where noted.

Bid Opportunity No. 140-2004

150 mm WM	WATERMAIN	150 mm WM	HYDRO	150 mm WM	WATERMAIN
Hydrant	HYDRANT	Valve	MTS	Hydrant	HYDRANT
300 mm LDS	LAND DRAINAGE SEWER	300 mm LDS	CONCRETE	300 mm LDS	LAND DRAINAGE SEWER
250 mm WWS	WASTE WATER SEWER	250 mm WWS	ASPHALT	250 mm WWS	WASTE WATER SEWER
Manhole	MANHOLE	Catch Basin	CURB STOP	Profile	Profile
Curb Inlet	CATCH BASIN	Culvert	REDUCER	NORTH/WEST	NORTH/WEST
Survey Bar	CURB INLET	Pipe Abandonments	COUPLING	SOUTH/EAST	SOUTH/EAST
Existing	LEGEND - PLAN	Proposed	ANODE	Lamp Standard	LAMP STANDARD
Existing	LEGEND - PLAN	Proposed	WM Monitoring Station	Tree	TREE

LOCATION APPROVED UNDERGROUND STRUCTURES

DATE: _____

NOTE:
 LOCATION OF UNDERGROUND STRUCTURES AS SHOWN ARE BASED ON THE BEST INFORMATION AVAILABLE. BUT NO GUARANTEE IS GIVEN THAT ALL EXISTING UTILITIES ARE SHOWN OR THAT THE GIVEN LOCATIONS ARE EXACT. CONFIRMATION OF EXISTENCE AND EXACT LOCATION OF ALL SERVICES MUST BE OBTAINED FROM THE INDIVIDUAL UTILITIES BEFORE PROCEEDING WITH CONSTRUCTION.

B.M. 39-020	ELEV. 237.879m	S.E. Cor. Strathmillan Rd. & Bruce Ave., Tbl. in W. Cone foundation No. 339 Strathmillan Rd. (Strathmillan School), 0.5m S. & 0.5m below brick of N.W. Cor. of School.
NO.	REVISIONS	DATE BY

UMA Engineering Ltd.
 Consulting • Engineering • Construction • Management Services

DESIGNED BY: FMI
 CHECKED BY: [Signature]
 DRAWN BY: ADL
 APPROVED BY: [Signature]
 HOR. SCALE: 1:250
 VERTICAL: 1:50
 DATE: 04/09/08
 RELEASED FOR CONSTRUCTION: [Signature]
 DATE: 04/04/08

APEGM
 Certificate of Authorization
 UMA Engineering Ltd.
 No. 256 Expiry: April 30, 2004

ENGINEER'S SEAL
 PROVINCE OF MANITOBA
 C.C. MACEY
 REGISTERED ENGINEER
 CONSULTANT DRAWING NO. 12
 D265-096-03

THE CITY OF WINNIPEG
 WATER AND WASTE DEPARTMENT

STRATHMILLAN/MOORGATE
 COMBINED SEWER RELIEF
 CONTRACT 5
 PUBLIC LANE W of McLAUGHLIN AVE.
 BRUCE AVE.
 to 130m N of BRUCE AVE.

SHEET 12 OF 20
 CITY DRAWING NUMBER LD-2937
 REV