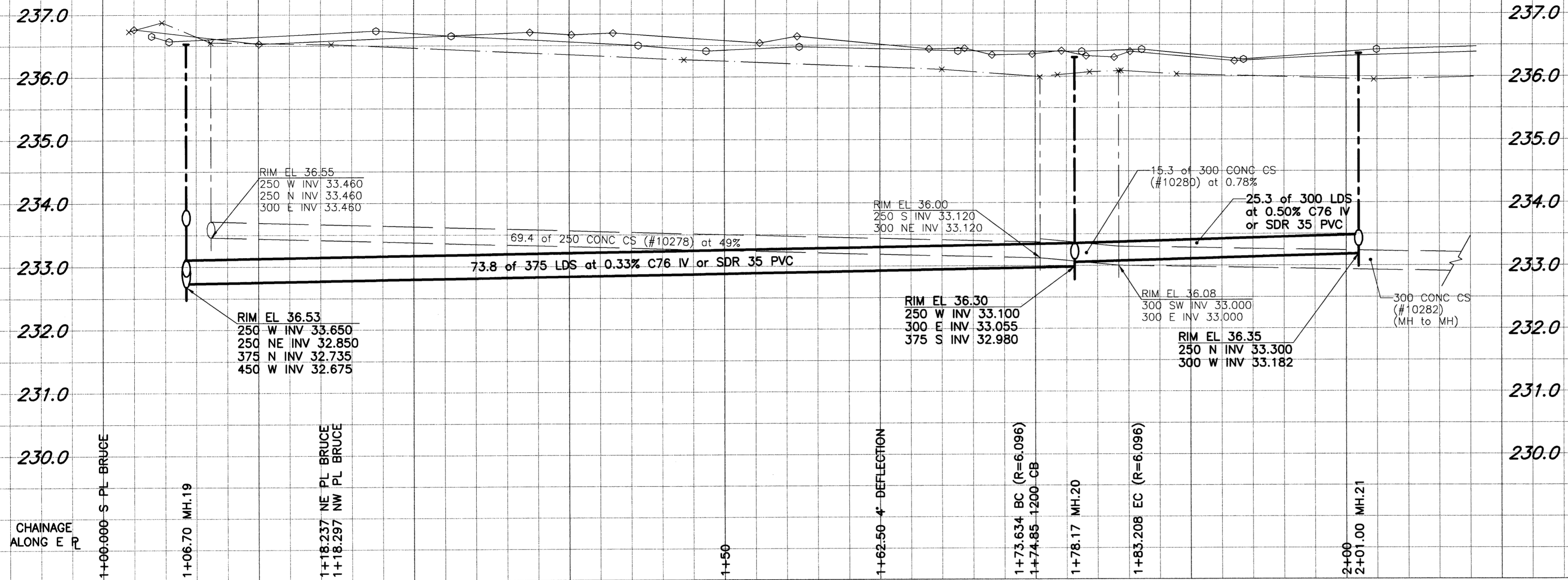
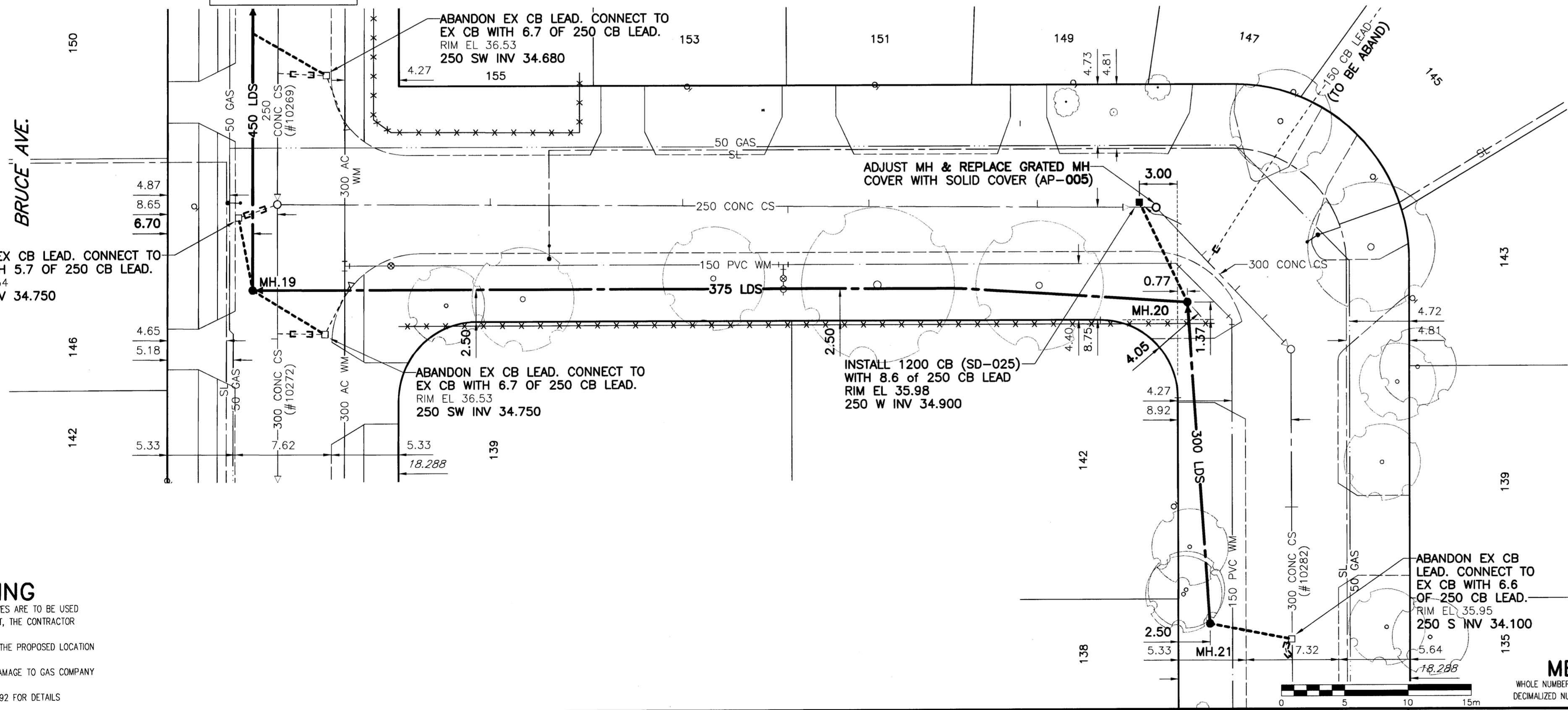


D SIZE 22" x 34" (558mm x 863mm)

EXISTING FEATURES



McLAUGHLIN AVENUE

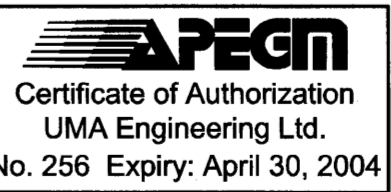


WARNING

IF POWER EQUIPMENT OR EXPLOSIVES ARE TO BE USED FOR EXCAVATION ON THIS PROJECT, THE CONTRACTOR MUST:
 1) NOTIFY THE GAS COMPANY OF THE PROPOSED LOCATION OF EXCAVATION.
 2) TAKE PRECAUTION TO AVOID DAMAGE TO GAS COMPANY INSTALLATIONS.
 SEE PROVINCIAL REGULATION 140/92 FOR DETAILS

CONSTRUCTION NOTES:

1. For detailed test hole information, see specifications.
2. The location of all services is to be confirmed in the field.
3. Install new sewers and catchbasin leads by trenchless methods wherever possible.
4. Renew/Rehabilitate catchbasins & renew catchbasin leads where noted.



Bid Opportunity No. 140-2004

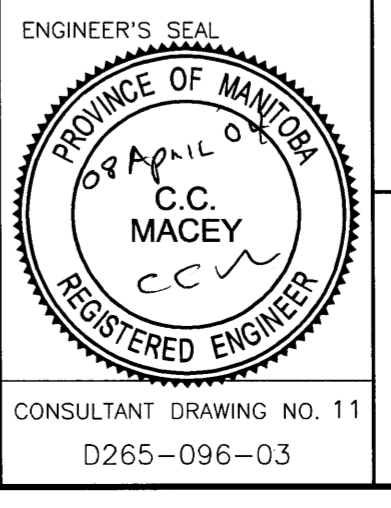
PLOT SCALE: 1:0.25
 UMA FILE NAME: MCLD1PR_R-DWG 2004-04-07 1:54pm ADL

150 mm WM	WATERMAIN	150 mm WM	HYDRO	150 mm WM	WATERMAIN
	HYDRANT		MTS		LAND DRAINAGE SEWER
	VALVE		GAS		WASTE WATER SEWER
	MANHOLE		CONCRETE		CATCH BASIN
	CATCH BASIN		ASPHALT		CURB INLET
	CURB INLET		REDUCER		REDUCER
	CULVERT		COUPLING		COUPLING
	SURVEY BAR		ANODE		ANODE
	PIPE ABANDONMENTS		WM MONITORING STATION		LAMP STANDARD
	EXISTING		PROPOSED		EXISTING
	LEGEND - PLAN		LEGEND - PROFILE		PROPOSED

LOCATION UNDERGROUND	APPROVED STRUCTURES
	SUPR. U/G STRUCTURES
	DATE

NOTE:
 LOCATION OF UNDERGROUND STRUCTURES AS SHOWN ARE BASED ON THE BEST INFORMATION AVAILABLE, BUT NO GUARANTEE IS GIVEN THAT ALL EXISTING UTILITIES ARE SHOWN OR THAT THE GIVEN LOCATIONS ARE EXACT. CONFIRMATION OF EXISTENCE AND EXACT LOCATION OF ALL SERVICES MUST BE OBTAINED FROM THE INDIVIDUAL UTILITIES BEFORE PROCEEDING WITH CONSTRUCTION.

DESIGNED BY	FMI	CHECKED BY	
DRAWN BY	ADL	APPROVED BY	
HOR. SCALE:	1:250	RELEASED FOR CONSTRUCTION	
VERTICAL:	1:50	DATE	02/04/08



THE CITY OF WINNIPEG
 WATER AND WASTE DEPARTMENT

STRATHMILLAN/MOORGATE
 COMBINED SEWER RELIEF
 CONTRACT 5

McLAUGHLIN AVENUE (W. LEG)
 BRUCE AVE.
 to McLAUGHLIN AVE. (N. LEG)

SHEET 11 OF 20
 CITY DRAWING NUMBER LD-2936
 REV