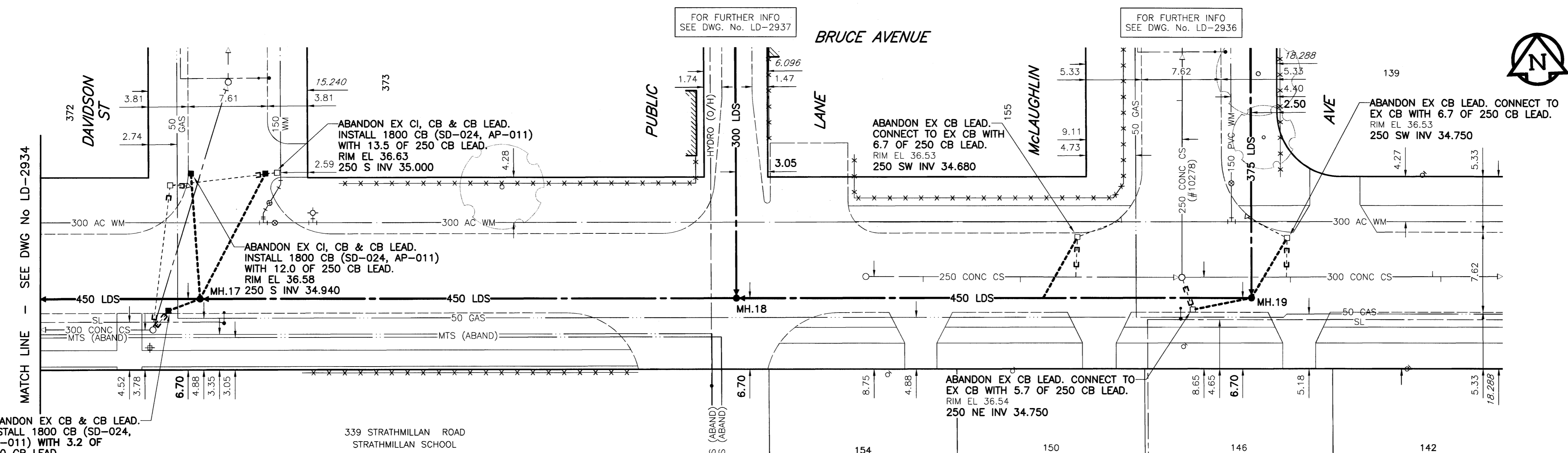
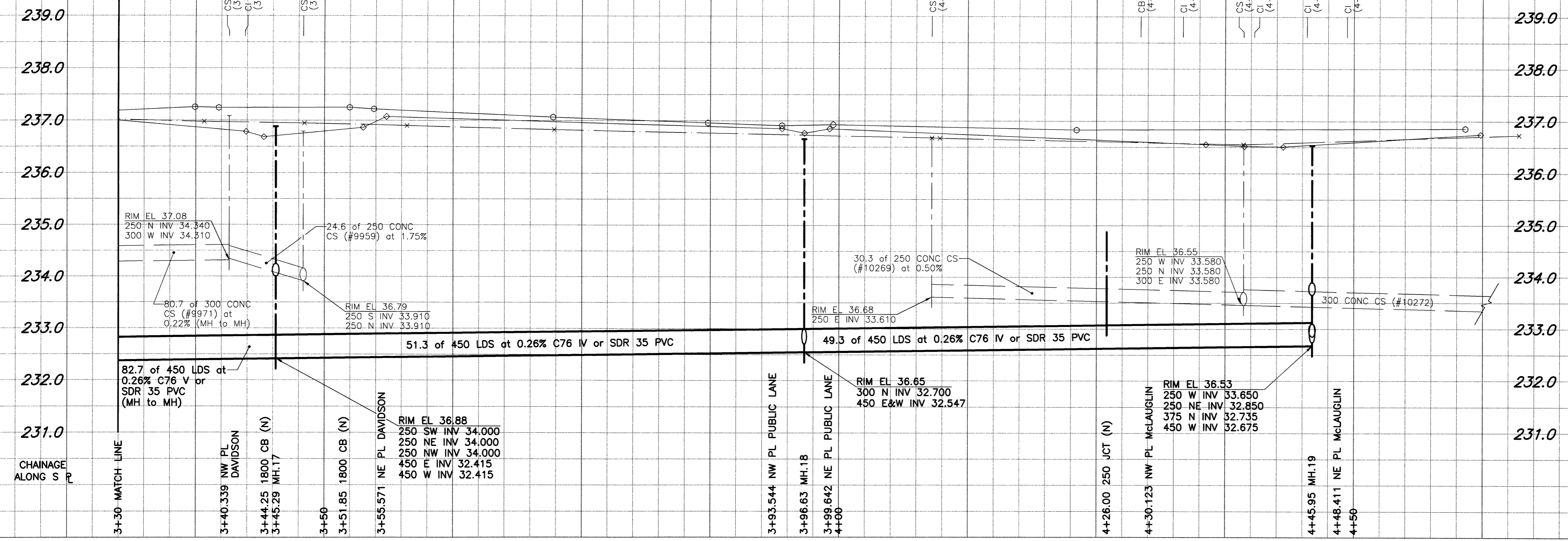


D SIZE 22" x 34" (558mm x 863mm)

EXISTING FEATURES



ABANDON EX CB & CB LEAD. INSTALL 1800 CB (SD-024, AP-011) WITH 3.2 OF 250 CB LEAD. RIM EL 36.87 250 SE INV 35.250

ABANDON EX CI, CB & CB LEAD. INSTALL 1800 CB (SD-024, AP-011) WITH 13.5 OF 250 CB LEAD. RIM EL 36.63 250 S INV 35.000

ABANDON EX CI, CB & CB LEAD. INSTALL 1800 CB (SD-024, AP-011) WITH 12.0 OF 250 CB LEAD. RIM EL 36.58 250 S INV 34.940

ABANDON EX CB LEAD. CONNECT TO EX CB WITH 5.7 OF 250 CB LEAD. RIM EL 36.54 250 NE INV 34.750

ABANDON EX CB LEAD. CONNECT TO EX CB WITH 6.7 OF 250 CB LEAD. RIM EL 36.53 250 SW INV 34.680

ABANDON EX CB LEAD. CONNECT TO EX CB WITH 6.7 OF 250 CB LEAD. RIM EL 36.53 250 SW INV 34.750

WARNING

IF POWER EQUIPMENT OR EXPLOSIONS ARE TO BE USED FOR EXCAVATION ON THIS PROJECT, THE CONTRACTOR MUST:

- 1) NOTIFY THE GAS COMPANY OF THE PROPOSED LOCATION OF EXCAVATION.
- 2) TAKE PRECAUTION TO AVOID DAMAGE TO GAS COMPANY INSTALLATIONS.

SEE PROVINCIAL REGULATION 140/92 FOR DETAILS

- CONSTRUCTION NOTES:**
1. For detailed test hole information, see specifications.
 2. The location of all services is to be confirmed in the field.
 3. Install new sewers and catchbasin leads by trenchless methods wherever possible.
 4. Renew/Rehabilitate catchbasins & renew catchbasin leads where noted.

150 mm WM	WATERMAIN	150 mm WM	HYDRO	150 mm WM	WATERMAIN
	HYDRANT		MTS		HYDRANT
	VALVE		GAS		VALVE
	LAND DRAINAGE SEWER		CONCRETE		LAND DRAINAGE SEWER
	WASTE WATER SEWER		ASPHALT		WASTE WATER SEWER
	MANHOLE		CURB STOP		PROFILE
	CATCH BASIN		REDUCER		NORTH/WEST R
	CURB INLET		COUPLING		SOUTH/EAST R
	CULVERT		ANODE		LAMP STANDARD
	SURVEY BAR		WM MONITORING STATION		TREE
	PIPE ABANDONMENTS				
EXISTING	LEGEND - PLAN	PROPOSED	EXISTING	LEGEND - PROFILE	PROPOSED

LOCATION UNDERGROUND	APPROVED STRUCTURES	DATE
SUPR. U/G STRUCTURES COMMITTEE		

NOTE: LOCATION OF UNDERGROUND STRUCTURES AS SHOWN ARE BASED ON THE BEST INFORMATION AVAILABLE. BUT NO GUARANTEE IS GIVEN THAT ALL EXISTING UTILITIES ARE SHOWN OR THAT THE GIVEN LOCATIONS ARE EXACT. CONFIRMATION OF EXISTENCE AND EXACT LOCATION OF ALL SERVICES MUST BE OBTAINED FROM THE INDIVIDUAL UTILITIES BEFORE PROCEEDING WITH CONSTRUCTION.

UMA Engineering Ltd.
 • Consulting • Engineering • Construction • Management Services

DESIGNED BY: FMI
 CHECKED BY: CC

DRAWN BY: ADL
 APPROVED BY: [Signature]

HOR. SCALE: 1:250
 VERTICAL: 1:50

DATE: 04/04/08
 RELEASED FOR CONSTRUCTION: [Signature]

APEGM
 Certificate of Authorization
 UMA Engineering Ltd.
 No. 256 Expiry: April 30, 2004

PROVINCE OF MANITOBA
 REGISTERED ENGINEER
 C.C. MACEY
 CONSULTANT DRAWING NO. 10
 D265-096-03

THE CITY OF WINNIPEG
 WATER AND WASTE DEPARTMENT

STRATHMILLAN/MOORGATE
 COMBINED SEWER RELIEF
 CONTRACT 5

BRUCE AVENUE
 60m E of STRATHMILLAN RD.
 to McLAUGHLIN AVE.

SHEET 10 OF 20
 CITY DRAWING NUMBER
 LD-2935

PLOT SCALE: 1:0.25
 FILE: BRUDTRP_R-DWG 2004-02-20 10:27am ADL