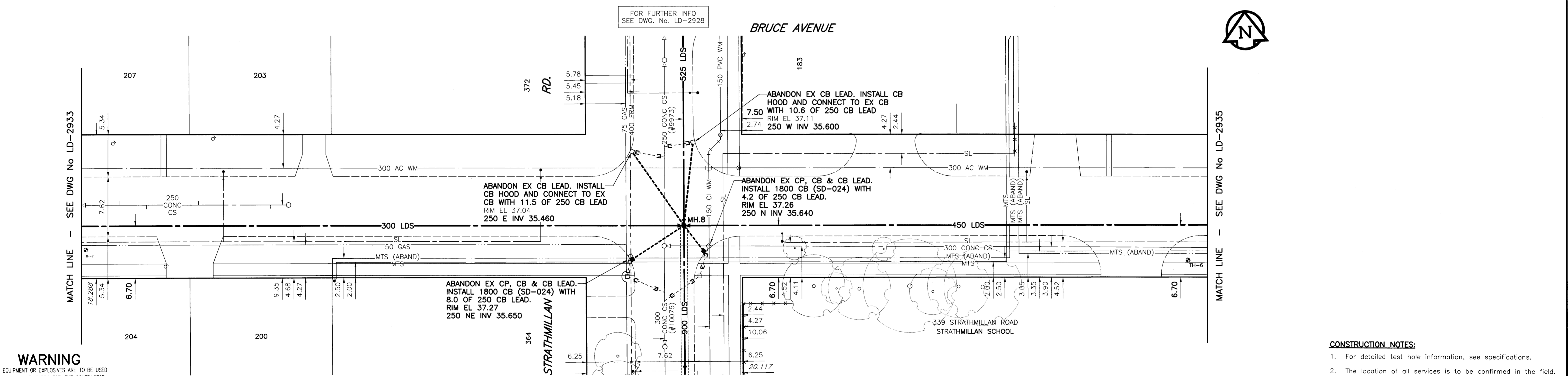
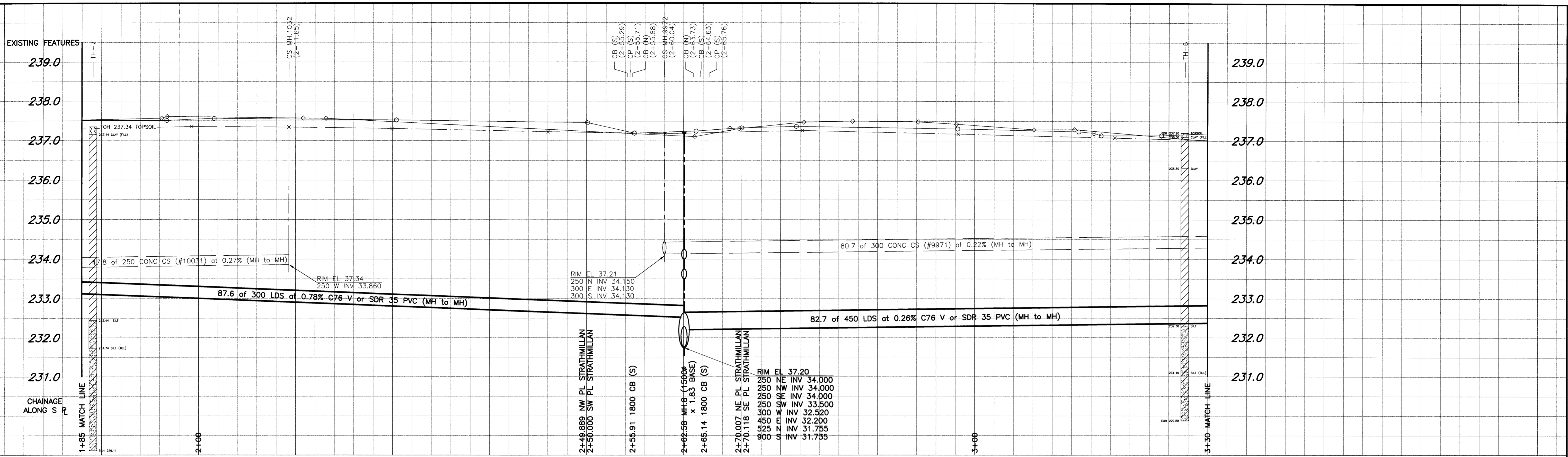


PLOT SCALE: 1:0.25
FILE: BRU01PR_R-DWG 2004-02-20 10:27:00 ADL



WARNING
IF POWER EQUIPMENT OR EXPLOSIVES ARE TO BE USED FOR EXCAVATION ON THIS PROJECT, THE CONTRACTOR MUST:
1) NOTIFY THE GAS COMPANY OF THE PROPOSED LOCATION OF EXCAVATION.
2) TAKE PRECAUTION TO AVOID DAMAGE TO GAS COMPANY INSTALLATIONS.
SEE PROVINCIAL REGULATION 140/92 FOR DETAILS

FOR FURTHER INFO SEE DWG. No. LD-2928

FOR FURTHER INFO SEE DWG. No. LD-2928

150 mm WM	WATERMAIN	150 mm WM	HYDRO	150 mm WM	WATERMAIN
Hydrant	HYDRANT	Valve	MTS	Hydrant	HYDRANT
300 mm LDS	LAND DRAINAGE SEWER	300 mm LDS	CONCRETE	300 mm LDS	LAND DRAINAGE SEWER
250 mm WWS	WASTE WATER SEWER	250 mm WWS	ASPHALT	250 mm WWS	WASTE WATER SEWER
Manhole	MANHOLE	Manhole	CURB STOP	Manhole	CURB STOP
Catch Basin	CATCH BASIN	Catch Basin	Reducer	Catch Basin	NORTH/WEST
Curb Inlet	CURB INLET	Curb Inlet	Coupling	Curb Inlet	SOUTH/EAST
Culvert	CULVERT	Culvert	Anode	Culvert	LAMP STANDARD
Survey Bar	SURVEY BAR	Survey Bar	WM Monitoring Station	Survey Bar	TREE
Pipe Abandonments	PIPE ABANDONMENTS	Pipe Abandonments	Existing	Pipe Abandonments	Existing
Existing	LEGEND - PLAN	Proposed	Legend - Plan	Proposed	Legend - Profile
Existing	LEGEND - PLAN	Proposed	Legend - Plan	Proposed	Legend - Profile

LOCATION	APPROVED	DATE
UNDERGROUND	STRUCTURES	
<p>NOTE: LOCATION OF UNDERGROUND STRUCTURES AS SHOWN ARE BASED ON THE BEST INFORMATION AVAILABLE, BUT NO GUARANTEE IS GIVEN THAT ALL EXISTING UTILITIES ARE SHOWN OR THAT THE GIVEN LOCATIONS ARE EXACT. CONFIRMATION OF EXISTENCE AND EXACT LOCATION OF ALL SERVICES MUST BE OBTAINED FROM THE INDIVIDUAL UTILITIES BEFORE PROCEEDING WITH CONSTRUCTION.</p>		
NO.	REVISIONS	DATE BY

<p>B.M. 39-020 ELEV. 237.879m</p> <p>S.E. Cor. Strathmillan Rd. & Bruce Ave. Tbtl. in W. Conc foundation No. 339 Strathmillan Rd. (Strathmillan School), 0.5m S. & 0.5m below brick of N.W. Cor. of School.</p>	
<p>UMA UMA Engineering Ltd. Consulting • Engineering • Construction • Management Services</p>	
DESIGNED BY: FMI	CHECKED BY: C.C.
DRAWN BY: ADL	APPROVED BY: <i>[Signature]</i>
HOR. SCALE: 1:250	RELEASED FOR CONSTRUCTION: <i>[Signature]</i>
VERTICAL: 1:50	DATE: 01/04/08

APEGM
Certificate of Authorization
UMA Engineering Ltd.
No. 256 Expiry: April 30, 2004

ENGINEER'S SEAL
PROVINCE OF MANITOBA
08 April 08
C.C. MACEY
REGISTERED ENGINEER
CONSULTANT DRAWING NO. 09
D265-096-03

THE CITY OF WINNIPEG
Winnipeg WATER AND WASTE DEPARTMENT

STRATHMILLAN/MOORGATE COMBINED SEWER RELIEF CONTRACT 5
BRUCE AVENUE
65m W of STRATHMILLAN RD.
to 10m W of DAVIDSON ST.

SHEET 09 OF 20
CITY DRAWING NUMBER LD-2934
REV

- CONSTRUCTION NOTES:**
- For detailed test hole information, see specifications.
 - The location of all services is to be confirmed in the field.
 - Install new sewers and catchbasin leads by trenchless methods wherever possible.
 - Renew/Rehabilitate catchbasins & renew catchbasin leads where noted.
- Bid Opportunity No. 140-2004