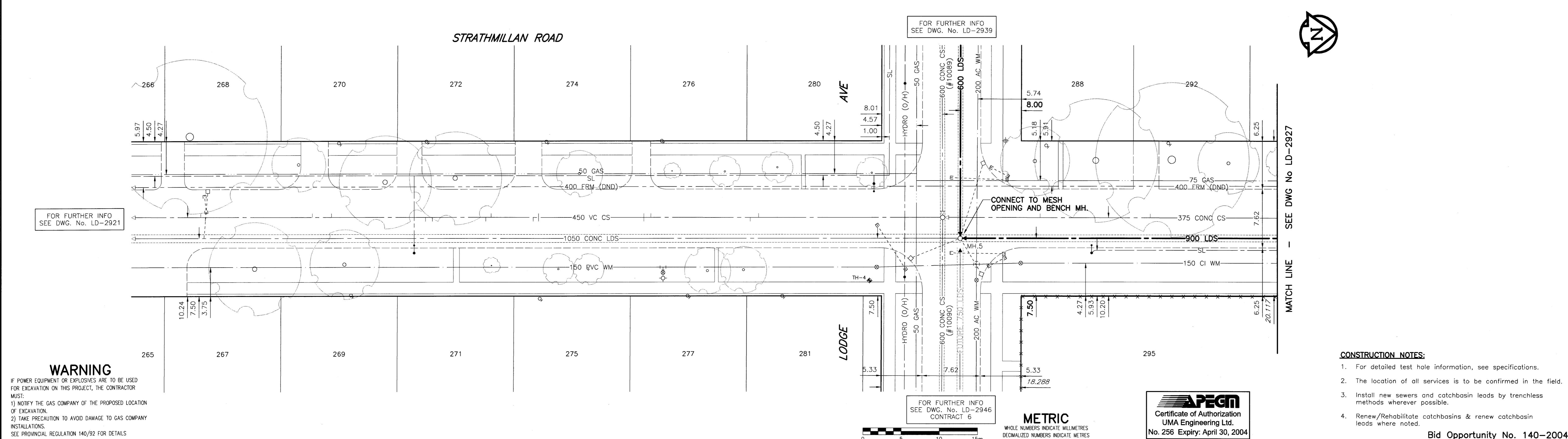
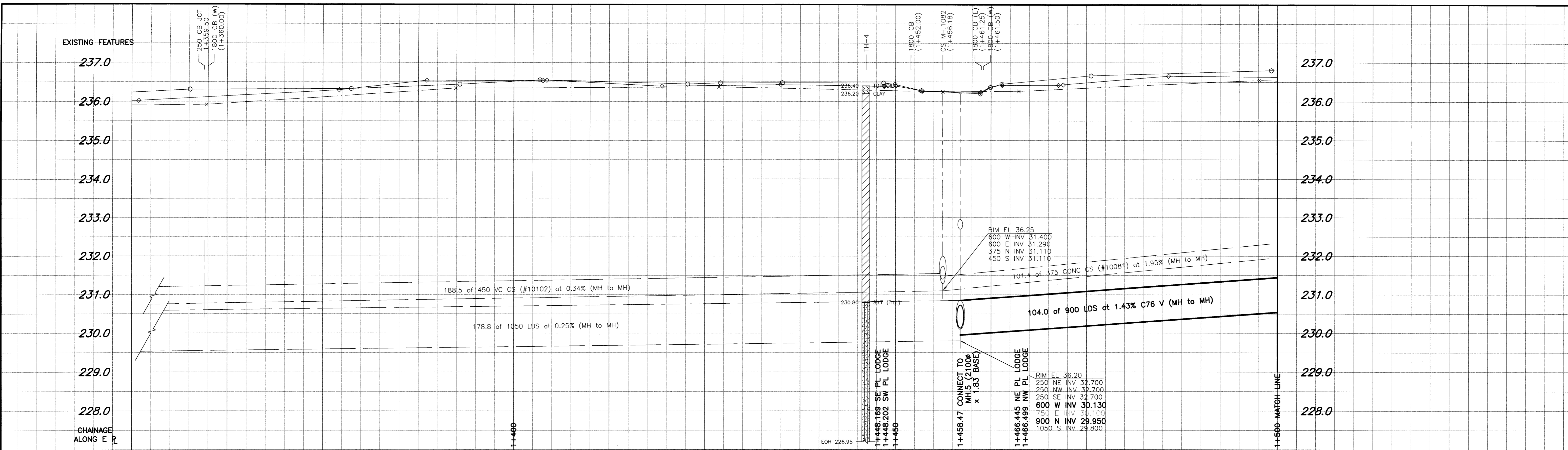


PLOT SCALE: 1:0.25
UMA FILE NAME: STR02PR-R-DWG-2004-04-07_11:23am ADL



WARNING
IF POWER EQUIPMENT OR EXPLOSIVES ARE TO BE USED FOR EXCAVATION ON THIS PROJECT, THE CONTRACTOR MUST:
1) NOTIFY THE GAS COMPANY OF THE PROPOSED LOCATION OF EXCAVATION.
2) TAKE PRECAUTION TO AVOID DAMAGE TO GAS COMPANY INSTALLATIONS.
SEE PROVINCIAL REGULATION 140/92 FOR DETAILS

- CONSTRUCTION NOTES:**
- For detailed test hole information, see specifications.
 - The location of all services is to be confirmed in the field.
 - Install new sewers and catchbasin leads by trenchless methods wherever possible.
 - Renew/Rehabilitate catchbasins & renew catchbasin leads where noted.
- Bid Opportunity No. 140-2004

150 mm WM	WATERMAIN	150 mm WM	HYDRO	150 mm WM	WATERMAIN
Hydrant	HYDRANT	Hydrant	MTS	Hydrant	HYDRANT
Valve	VALVE	Valve	Gas	Valve	VALVE
300 mm LDS	LAND DRAINAGE SEWER	300 mm LDS	CONCRETE	300 mm LDS	LAND DRAINAGE SEWER
250 mm WWS	WASTE WATER SEWER	250 mm WWS	ASPHALT	250 mm WWS	WASTE WATER SEWER
Manhole	MANHOLE	Manhole	CURB STOP	Profile	PROFILE
Catch Basin	CATCH BASIN	Catch Basin	Reducer	North/West	NORTH/WEST
Curb Inlet	CURB INLET	Curb Inlet	Coupling	South/East	SOUTH/EAST
Culvert	CULVERT	Culvert	Anode	Lamp Standard	LAMP STANDARD
Survey Bar	SURVEY BAR	Survey Bar	WM Monitoring Station	Tree	TREE
Pipe Abandonments	PIPE ABANDONMENTS	Proposed	Existing	Proposed	PROPOSED
Existing	LEGEND - PLAN	Proposed	Existing	LEGEND - PROFILE	PROPOSED

LOCATION APPROVED UNDERGROUND STRUCTURES

SUPR. U/G STRUCTURES COMMITTEE DATE

NOTE:
LOCATION OF UNDERGROUND STRUCTURES AS SHOWN ARE BASED ON THE BEST INFORMATION AVAILABLE. BUT NO GUARANTEE IS GIVEN THAT ALL EXISTING UTILITIES ARE SHOWN OR THAT THE GIVEN LOCATIONS ARE EXACT. CONFIRMATION OF EXISTENCE AND EXACT LOCATION OF ALL SERVICES MUST BE OBTAINED FROM THE INDIVIDUAL UTILITIES BEFORE PROCEEDING WITH CONSTRUCTION.

B.M. 39-058 ELEV. 236.271m	S.E. Cor. Strathmillan Rd. & Lodge Ave. Tbtt. on top of 0.05m dia. x 2.4m iron pipe 3.7m N. of S.L. of Lodge Ave. & on E.L. of Strathmillan Rd.		
NO.	REVISIONS	DATE	BY

UMA Engineering Ltd.
• Consulting • Engineering • Construction • Management Services

DESIGNED BY: FMI
CHECKED BY: [Signature]
DRAWN BY: ADL
APPROVED BY: [Signature]
HOR. SCALE: 1:250
VERTICAL: 1:50
DATE: 02/04/08

APCGM
Certificate of Authorization
UMA Engineering Ltd.
No. 256 Expiry: April 30, 2004

ENGINEER'S SEAL
C.C. MACEY
REGISTERED ENGINEER

CONSULTANT DRAWING NO. 01
D265-096-03

THE CITY OF WINNIPEG
Winnipeg WATER AND WASTE DEPARTMENT

STRATHMILLAN/MOORGATE
COMBINED SEWER RELIEF
CONTRACT 5

98m S of LODGE AVE.
to 34m N of LODGE AVE.

SHEET 01 OF 20
CITY DRAWING NUMBER
LD-2926