

EXISTING	PROPOSED	EXISTING	PROPOSED

EXISTING	PROPOSED

NO.	REVISIONS	DATE	BY

Stantec Consulting Ltd.
 905 Waverley Street, Winnipeg, Manitoba
 Tel 204-489-5900 Fax 204-453-9012

ENGINEER'S SEAL
 ORIGINAL SEALED BY C.L.DYCK
 P. ENG. 03/19/2004

DESIGNED BY V.M.
CHECKED BY C.L.D.
DATE FEB. 20, 2004

RELEASED FOR ORIGINAL CONSTRUCTION SIGNED BY K. ZUREK
DATE MARCH 19, 2004

CONSULTANT DRAWING NO. CW-53-599

THE CITY OF WINNIPEG
 WATER AND WASTE DEPARTMENT

WATERMAIN RENEWALS (WEST SIDE)
STORM RELIEF WORKS AND CS RENEWAL
 LOMBARD AVE. TO ALEXANDER AVENUE
 STA. 4+55 TO STA. 5+90

ENGINEER'S SEAL
 ORIGINAL SEALED BY C.L.DYCK
 P. ENG. 03/19/2004

DESIGNED BY V.M.
CHECKED BY C.L.D.
DATE FEB. 20, 2004

RELEASED FOR ORIGINAL CONSTRUCTION SIGNED BY K. ZUREK
DATE MARCH 19, 2004

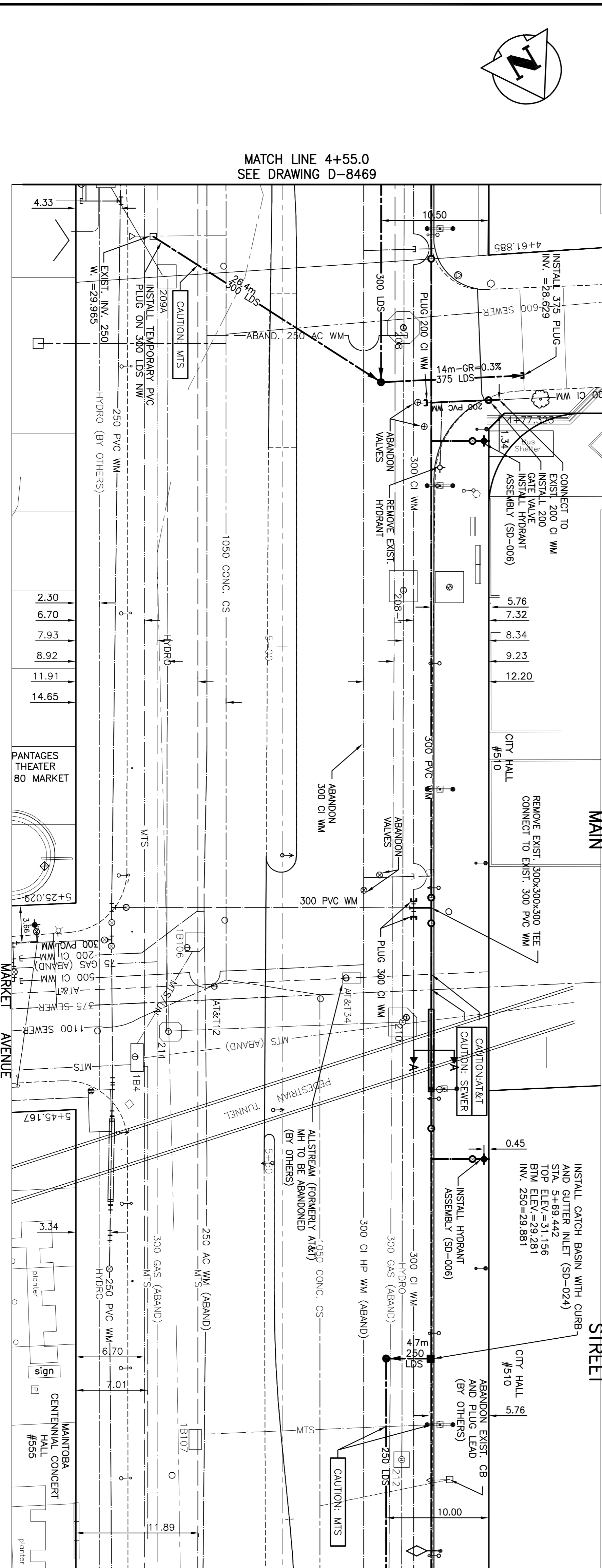
CONSULTANT DRAWING NO. CW-53-599

CONTRACT NO. 2004-03-24

PROJECT NO. 231.490m

LOCATION APPROVED
 UNDERGROUND STRUCTURES
 S.I.P.V. U/S STRUCTURES DATE

NOTE:
 LOCATION OF UNDERGROUND STRUCTURES AS SHOWN ARE BASED ON THE BEST INFORMATION AVAILABLE BUT NO GUARANTEE IS GIVEN OR MADE THAT THE OPEN LOCATIONS ARE EXACT. THE CONTRACTOR SHALL VERIFY THE EXISTENCE AND EXACT LOCATION OF ALL UTILITIES BEFORE PROCEEDING WITH CONSTRUCTION.



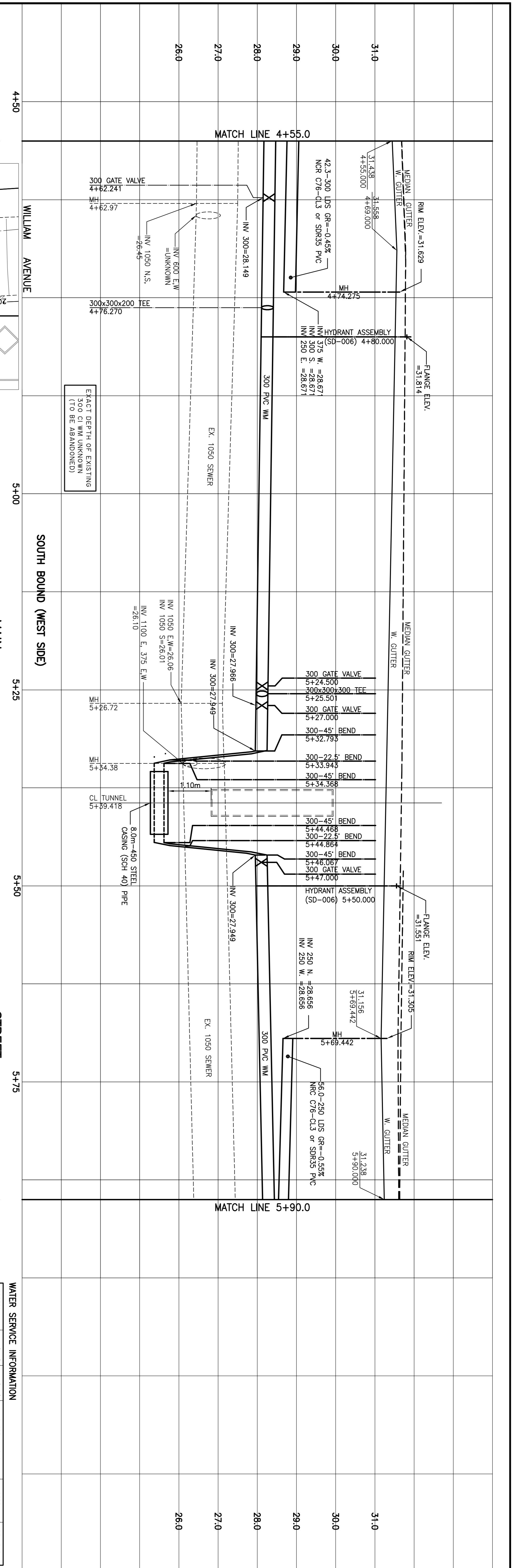
WARNING
 IF POWER EQUIPMENT OR PERSONS ARE TO BE USED FOR EXCAVATION ON THIS PROJECT THE CONTRACTOR SHALL TAKE PRECAUTIONS TO AVOID DAMAGE TO GAS COMPANY INSTALLATIONS.
 SEE PROVINCIAL REGULATION 140/92 FOR DETAILS

METRIC
 WHOLE NUMBERS INDICATE MILLIMETRES
 DECIMALIZED NUMBERS INDICATE METRES

NOTE: ALL EXISTING VALVE BOXES TO BE ABANDONED
 NOTE: CHANGES SHOWN ARE ALONG & OF ROW.
 NOTE: ALL VALVES TO BE INSTALLED COUNTER CLOCKWISE TO CLOSE

SECTION A-A
 N.T.S.
 WATERMAIN TO BE SUPPORTED BY POLYESTER FIBREGLASS OR PVC CASING SPACERS AS SHOWN THROUGH FULL LENGTH OF STEEL CASING PIPE

SECTION A-A
 N.T.S.
 450 STEEL CASING (SCH 40) PIPE
 300 PVC WATERMAIN



WATER SERVICE INFORMATION

ADDRESS	SIZE (mm) & TYPE (STREET)	SIZE (mm) & TYPE (PROP)	SHORT & LONG MEASUREMENT	CORP. LOCATION	REMARKS
510 MAIN ST. (COMMERCIAL)	150 O	150 O	36.1' N.N. MAIN ST	-	(SERVICED OFF JAMES ST.)