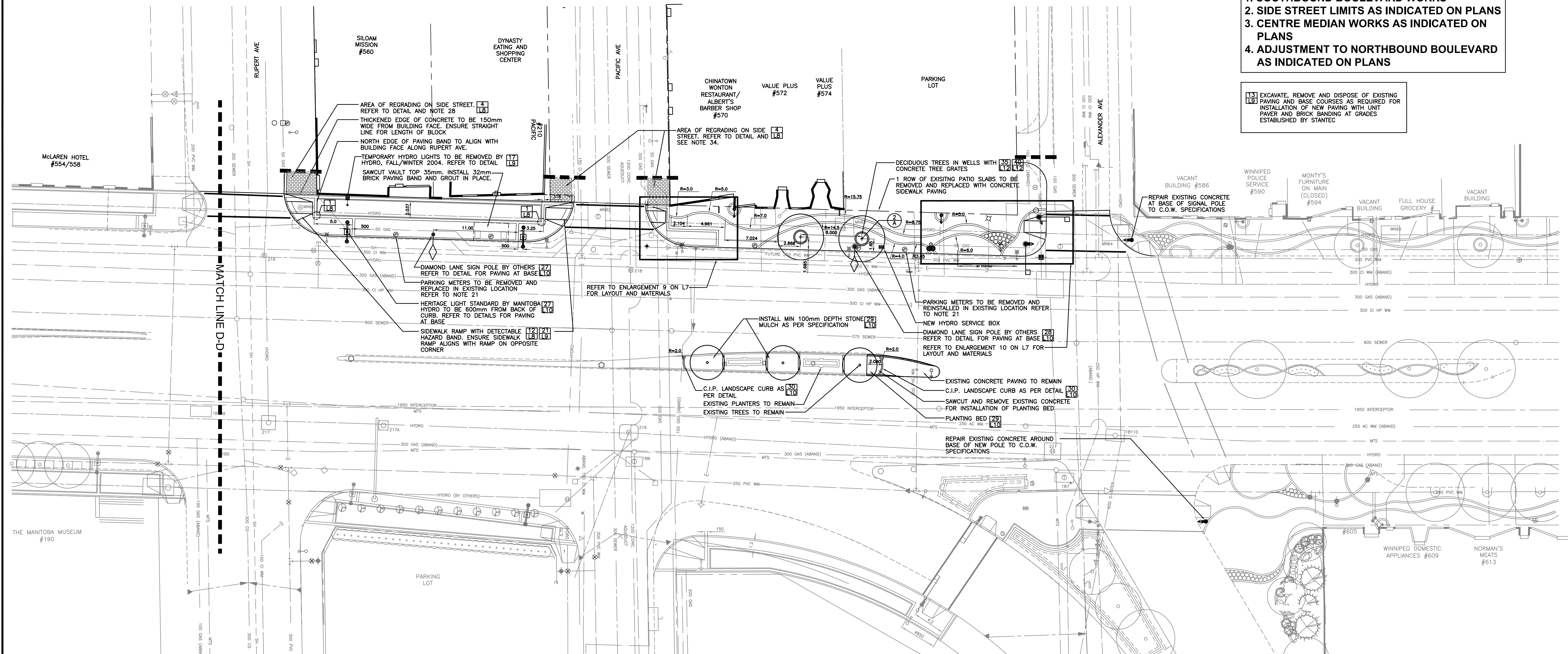


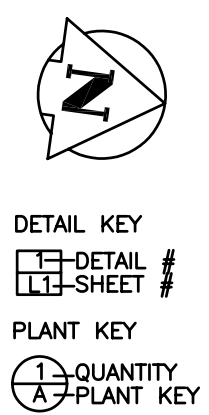
LIMIT OF WORK

1. SOUTHBOUND BOULEVARD WORKS
2. SIDE STREET LIMITS AS INDICATED ON PLANS
3. CENTRE MEDIAN WORKS AS INDICATED ON PLANS
4. ADJUSTMENT TO NORTHBOUND BOULEVARD AS INDICATED ON PLANS

13 EXCAVATE, REMOVE AND DISPOSE OF EXISTING PAVING AND BASE COURSES AS REQUIRED FOR INSTALLATION OF NEW PAVING WITH UNIT PAVEMENT AND BRICK BANDING AT GRADES ESTABLISHED BY STANTEC



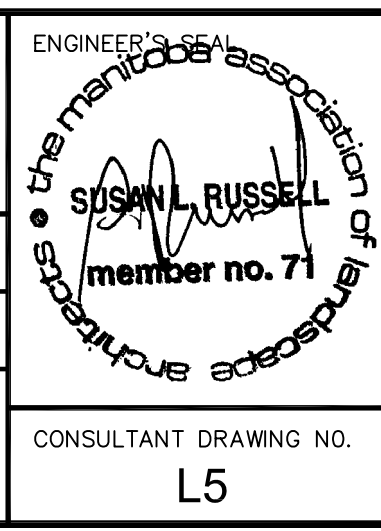
- NOTES**
1. ALL DIMENSIONS SHOWN IN METRIC UNITS. NUMBERS WITH DECIMALS INDICATE METERS. WHOLE NUMBERS INDICATE MILLIMETERS.
 2. ALL DIMENSIONS ARE REFERENCED FROM PROPERTY LINES AND/OR BUILDING FACE AND BACK OF CURB.
 3. THE CONTRACTOR SHALL PROVIDE A QUALIFIED CREW TO LAYOUT STREETSCLAPING ELEMENTS. THE CREW SHALL BE EQUIPPED WITH ALL THE NECESSARY EQUIPMENT TO PROVIDE HORIZONTAL AND VERTICAL LAYOUT IN ACCORDANCE WITH THE PLANS AND SPECIFICATIONS.
 4. CONFIRM ALL DIMENSIONS ON SITE AND HAVE ALL LAYOUT APPROVED BY CONTRACT ADMINISTRATOR PRIOR TO ANY CONSTRUCTION. REPORT ANY DISCREPANCIES.
 5. LAYOUT ALL TREE LOCATIONS FOR APPROVAL BY CONTRACT ADMINISTRATOR PRIOR TO EXCAVATION.
 6. LAYOUT ALL CONCRETE SAWCUTS FOR REVIEW AND APPROVAL BY CONTRACT ADMINISTRATOR PRIOR TO CONSTRUCTION.
 7. STANTEC ENGINEERING/MANITOBA HYDRO WILL LAYOUT ALL LIGHT POLES AND DIAMOND LANE POLES. THE CONTRACTOR SHALL BE RESPONSIBLE FOR DETAILED LAYOUT OF ALL STREETSCLAPING WORKS AS SHOWN ON THE DRAWINGS.
 8. REFER TO STANTEC'S DRAWINGS AND SPECIFICATIONS FOR DETAILS AND LAYOUT OF ALL CURB AND ROADWAY WORKS.
 9. REFER TO STANTEC'S DRAWINGS AND SPECIFICATIONS FOR DETAILS AND LAYOUT OF ALL EXISTING AND PROPOSED UTILITIES.
 10. REFER TO STANTEC'S DRAWINGS AND SPECIFICATIONS FOR ELEVATIONS AND GRADES. MAINTAIN EXISTING GRADES AT ALL BUILDING EDGES AND PROPERTY LINES UNLESS OTHERWISE NOTED. ENSURE POSITIVE DRAINAGE TO ALL CATCH BASINS. MINIMUM CROSS SLOPE 1%. MAXIMUM CROSS SLOPE 2% ON CONCRETE SIDEWALK IN "SAFE" PEDESTRIAN ZONE.
 11. REFER TO STANTEC'S DRAWINGS AND SPECIFICATIONS FOR LOCATIONS OF ALL HYDRO DUCTS, AREAWAYS AND UTILITIES THAT REQUIRE RECONSTRUCTION.
 12. CONTRACTOR TO ADJUST GRADES OF ALL SERVICES IN SIDEWALK AS REQUIRED. REFER TO ENGINEER'S DRAWINGS AND SPECIFICATIONS FOR ALL MANHOLE CATCH BASINS, FIRE HYDRANT, CURB STOPS, ETC. REMOVALS, RELOCATIONS AND ADJUSTMENTS.
 13. THERE ARE A SIGNIFICANT NUMBER OF AREAWAYS WITHIN THE AREA OF PROPOSED WORKS. CONTRACTOR TO VERIFY LOCATION OF ALL AREAWAYS. REFER TO STANTEC'S DRAWINGS AND SPECIFICATIONS FOR LOCATIONS. DEPTH OF BURIAL IS NOT KNOWN. CONTRACTOR SHOULD EXERCISE EXTREME CAUTION IN AREA OF ALL AREAWAYS. REFER TO STANTEC'S DRAWINGS AND SPECIFICATIONS FOR INFORMATION REGARDING AREAWAYS TO BE RECONSTRUCTED OR ABANDONED.
 14. LOCATION OF TRAFFIC SIGNALS AND BASES (WORK BY SIGNALS) AS SHOWN ON THESE PLANS ARE APPROXIMATE ONLY. REFER TO DRAWINGS BY TRAFFIC SIGNALS SECTION OF THE STREETS AND TRANSPORTATION DEPT. FOR EXACT LOCATIONS. CONTRACTOR TO REPORT ANY MAJOR DISCREPANCIES TO CONTRACT ADMINISTRATOR TO ALLOW ADJUSTMENT OF AFFECTED ELEMENTS ON SITE.
 15. LAYOUT OF ALL LIGHT STANDARDS TO BE REVIEWED AND APPROVED BY CONTRACT ADMINISTRATOR PRIOR TO INSTALLATION OF CONCRETE BASES, TREE WELLS AND DECORATIVE PAVING BY CONTRACTOR. CONTRACTOR TO ADJUST LOCATIONS AND PAVING PATTERNS ON SITE AS REQUIRED IN CONJUNCTION WITH THE CONTRACT ADMINISTRATOR.
 16. LOCATION OF ALL RAMP CURBS AND SIDEWALK RAMP TO BE CONFIRMED ON SITE RELATIVE TO SIGNAL POLE AND CROSSWALK LOCATIONS. ADJUST PAVING PATTERN AS REQUIRED. LOCATIONS TO BE APPROVED BY LANDSCAPE ARCHITECT/ACCESSIBILITY CONSULTANT PRIOR TO CONSTRUCTION. ALL RAMP MUST BE SMOOTH WITH NO DIPS OR STEPS IN PAVING. ALL SIDEWALK RAMP TO HAVE A MAXIMUM 6% SLOPE UNLESS OTHERWISE NOTED.
 17. EXISTING ORNAMENTAL STREET LIGHT TROLLEY POLES TO BE REPLACED WITH TEMPORARY STREET LIGHTS BY MANITOBA HYDRO. LOCATION SHOWN ON THESE PLANS ARE APPROXIMATE ONLY. REFER TO DRAWINGS AND SPECIFICATIONS BY MANITOBA HYDRO FOR NEW LOCATIONS. CONTRACTOR TO REPORT ANY MAJOR DISCREPANCIES TO CONTRACT ADMINISTRATOR TO ALLOW ADJUSTMENT OF AFFECTED ELEMENTS ON SITE.
 18. CONTRACTOR TO PROTECT ALL TREES, POLES, AREAWAYS ETC. TO REMAIN TO CITY OF WINNIPEG STANDARDS.
 19. EXISTING BENCHES, GARBAGE RECEPTACLES, NEWSPAPER BOXES, AND MAIL BOXES TO BE TEMPORARILY RELOCATED BY CONTRACTOR. CONTRACTOR TO COORDINATE WITH RESPECTIVE PARTIES AS REQUIRED.
 20. ALL PROPOSED TRANSIT SHELTER CONCRETE FOUNDATIONS, MANITOBA HYDRO POWER PEDISTAL CONCRETE FOUNDATIONS, MTS BOOTH BASES, AND TRENCHING AND BACKFILLING (FOR ELECTRICAL WORK FOR HERITAGE LIGHTS, ILLUMINATED TRANSIT SIGN, VACOM SHELTERS AND POWER PEDESTALS) ARE INCLUDED IN THIS CONTRACT.
 21. EXISTING PARKING METERS TO BE REMOVED BY CITY OF WINNIPEG PUBLIC WORKS DEPARTMENT. CONTRACTOR TO INSTALL POST IN LOCATIONS INDICATED BY TRAFFIC SERVICES. POST TO BE SUPPLIED BY TRAFFIC SERVICES.
 22. REMOVAL OF TRANSIT PRIORITY LANE SIGNAGE AND STREET SIGNAGE BY TRAFFIC SERVICES AS REQUIRED. CONTRACTOR TO INSTALL SIGN POST CLAMPS SUPPLIED BY TRAFFIC SERVICES IN LOCATIONS INDICATED BY TRAFFIC SERVICES.
 23. INTERLOCK PAVERS TO BE REMOVED AND 1 PALLETTE OF EACH COLOUR OF 'Y' BRICK DELIVERED TO CITY OF WINNIPEG STORAGE YARD AS DIRECTED BY CONTRACT ADMINISTRATOR.
 24. EXISTING MEDIAN PLANTERS TO BE REMOVED BY PARKS AND OPEN SPACE DIVISION. CONTRACTOR TO COORDINATE AS REQUIRED.
 25. REMOVE ALL EXISTING TREES AND TREE WELLS ON WEST BOULEVARD AND ONLY THOSE NOTED IN CENTRE MEDIAN. BACKFILL WITH COMPACTED GRANULAR BASE COURSES IN AREAS OF NEW SIDEWALK AND PLANTING SOIL AS PER TREE WELL DETAILS 29/19 & 30/110.
 26. ALL BRICK AND UNIT PAVING EXTENDS BENEATH ALL STREET FURNITURE (PLANTERS, NEWSPAPER BOXES, GARBAGE RECEPTACLES AND BENCHES) PAVING RADI TO BE ADJUSTED ON SITE TO MEET EXISTING CONDITIONS.
 27. CONTRACTOR TO SUPPLY AND INSTALL SQUARE CONCRETE COLLARS FOR ALL SURFACE UTILITIES IN SIDEWALK WHERE COLLAR EXTENDS INTO PAVING BANDS CONTRACTOR TO ENSURE CONCRETE EXTENDS TO NEAREST LINE OF PAVEMENT OR BRICK. REFER TO DETAIL 16/L9.
 28. TO MEET NEW SIDEWALK GRADES AT CROSS STREETS WITH INTERLOCK SIDEWALKS: REMOVE AND STOCKPILE EXISTING PAVING STONE AND BRICK. REMOVE AND DISPOSE OF EXISTING BASE AND REPLACE WITH LEAN MIX CONCRETE BASE (TO CITY OF WINNIPEG STANDARDS) WITH SAND LEVELLING COURSE TO NEW DESIGN GRADES. REINSTALL EXISTING PAVING STONES AND BRICK ON NEW BASE.
 29. TO MEET NEW SIDEWALK GRADES AT CROSS STREETS WITH CONCRETE SIDEWALK: REMOVE AND DISPOSE OF EXISTING CONCRETE SIDEWALK, SUPPLY AND INSTALL NEW CONCRETE SIDEWALK AND COMPACTED GRANULAR BASE TO GRADE AND SLOPES REQUIRED TO MEET FLUSH WITH NEW CURB OR PAVING.
 30. C.I.P. LANDSCAPE CURB AS PER DETAIL 30/L10
 31. EXISTING CONCRETE PAVING TO REMAIN
 32. SAWCUT AND REMOVE EXISTING CONCRETE FOR INSTALLATION OF PLANTING BED
 33. PLANTING BED 29/L10
 34. REPAIR EXISTING CONCRETE AROUND BASE OF NEW POLE TO C.O.W. SPECIFICATIONS
 35. EXISTING MTS BOOTH TO BE REMOVED AND REPLACED BY MTS. NEW CIP CONCRETE BASE BY CONTRACTOR. CONTRACTOR TO REMOVE EXISTING BASE, CONSTRUCT NEW BASE, AND COORDINATE WITH MTS AS REQUIRED.



HYDRO	HYDRO LINE	EXISTING SIGNAL LIGHT	EXISTING TREE
GAS	GAS LINE	EXISTING SIGNAL LIGHT TO BE REMOVED	PROPOSED TREE
SEWER	SEWER LINE	STREET LIGHT TO BE REMOVED	EXISTING FENCE
WM	WATER LINE	PROPOSED PEDESTRIAN SIGNAL	MUNIC PAVEMENT
INTERCEPTOR	INTERCEPTOR	PROPOSED SIGNAL LIGHT (DAVIT)	PAVING BAND
MTS	MTS LINE	PROPOSED SIGNAL LIGHT (POLE)	PARKING SIGNAGE
AT&T	AT&T	PROPOSED STREET LIGHT	
	PROPERTY LINE	PROPOSED DIAMOND LANE SIGN POLE	
	HYDRANT	EXISTING PLANTER	
	EXISTING CATCH BASINS	EXISTING PARKING METER	
	EXISTING MANHOLE	TEMPORARY STREET LIGHT LOCATION	

LOCATION APPROVED UNDERGROUND STRUCTURES	B.M. ELEV.
SUPV. U/G STRUCTURES COMMITTEE	DATE
NOTE: LOCATION OF UNDERGROUND STRUCTURES AS SHOWN ARE BASED ON THE BEST INFORMATION AVAILABLE BUT NO GUARANTEE IS GIVEN THAT ALL EXISTING UTILITIES ARE SHOWN OR THAT THE GIVEN LOCATIONS ARE EXACT. CONFIRMATION OF EXISTENCE AND EXACT LOCATION OF ALL SERVICES MUST BE OBTAINED FROM THE INDIVIDUAL UTILITIES BEFORE PROCEEDING WITH CONSTRUCTION.	
2 RELEASED FOR TENDER	23/03/04 SR
1 RELEASED FOR CITY REVIEW	20/02/04 SR
NO. REVISIONS	DATE BY
	DATE 23/03/04

DESIGNED BY SR/JW/AH		CHECKED BY SR	
DRAWN BY AH/IG		APPROVED BY FC/DP	
HOR. SCALE: 1:250		RELEASED FOR CONSTRUCTION	
VERTICAL: N/A		ORIGINALLY SIGNED BY FRED COREY ON MARCH 25, 2004	
CONSULTANT DRAWING NO. L5		DATE	



THE CITY OF WINNIPEG
PUBLIC WORKS DEPARTMENT
STREETS ENGINEERING DIVISION

Winnipeg

MAIN ST. STREETSCLAPING
LOMBARD AVE. TO DISRAELI FREEWAY
WEST SIDE
LAYOUT AND PLANTING PLANS

SHEET 20 OF 27
CAD FILE DRAWING NUMBER MAN2003-15903.dwg
CITY DRAWING NUMBER P-3247-20