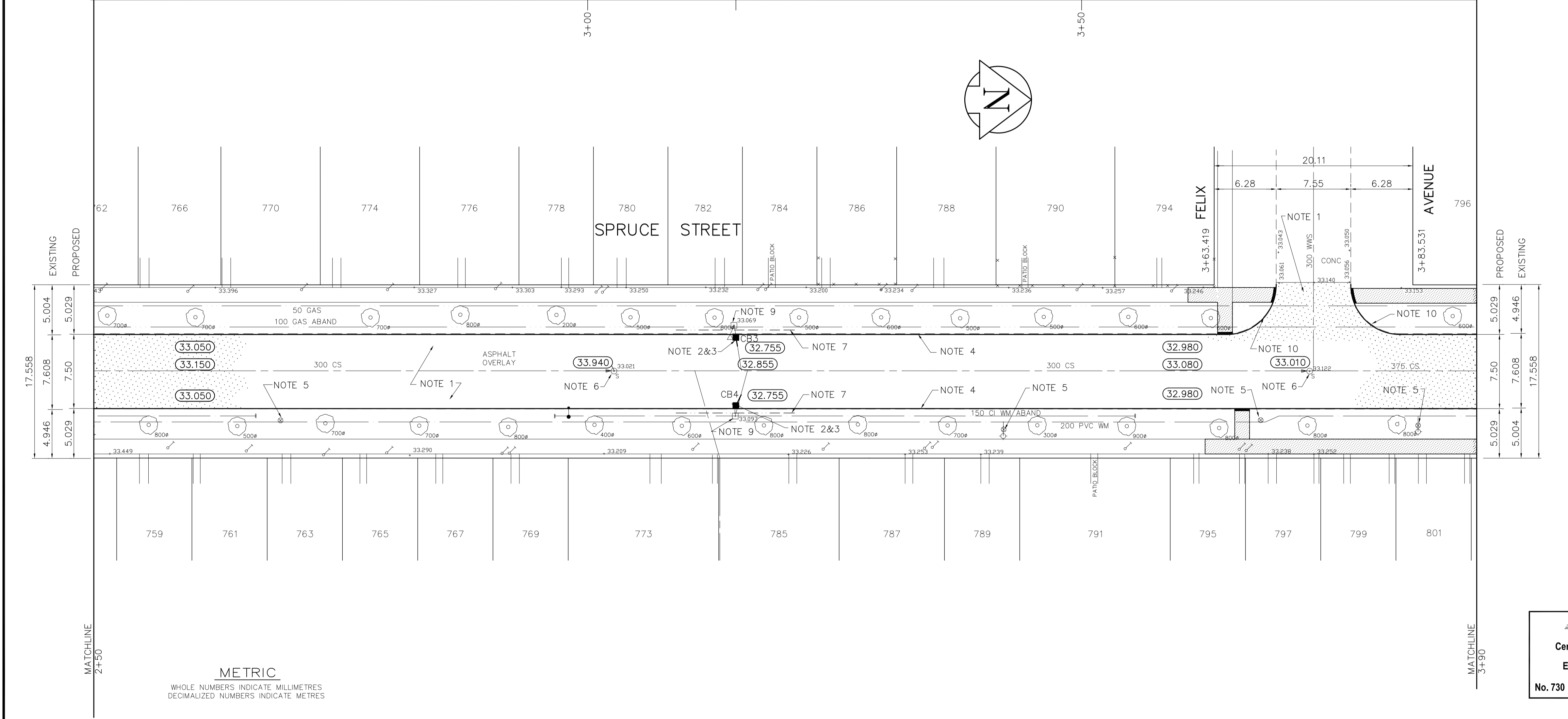
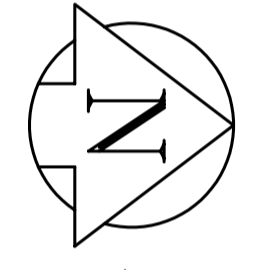


PAVEMENT RECONSTRUCTION SECTION



DESCRIPTION	RIM	INVERT			
		NORTH	SOUTH	EAST	WEST
CB 3	32.755			31.165	
CB 4	32.755				31.165

- REFERENCE NOTES**
- PAVEMENT DIMENSIONS ARE TO BACK OF CURB
 - ADD 200.000 TO OBTAIN GEODETIC DATUM
 - BASELINE IS CENTRE LINE RIGHT-OF-WAY
 - PROPERTY LINES OBTAINED FROM CITY OF WINNIPEG L.B.I.S., AND NO SCALE FACTOR WAS APPLIED.

- CONSTRUCTION NOTES**
- REMOVE EXISTING PAVEMENT AND CONSTRUCT NEW 150mm REINFORCED CONCRETE PAVEMENT.
 - ABANDON EXISTING INLET.
 - INSTALL NEW CURB AND GUTTER INLET w/ CATCHBASIN (SD224) c/w NEW 250 LEAD TO EXISTING LEAD.
 - CONSTRUCT NEW CONCRETE BARRIER CURB.
 - ADJUST EXISTING WATERVALVE TO GRADE.
 - ADJUST EXISTING MANHOLE/CATCHBASIN TO GRADE.
 - INSTALL 150 SUBDRAIN.
 - ADJUST EXISTING CURB STOPS TO GRADE AS REQUIRED.
 - ABANDON EXISTING CATCHBASIN.
 - CONSTRUCT 150mm HEIGHT MODIFIED BARRIER CURB (INTEGRAL).
 - ADJUST EXISTING PATIO BLOCKS/PAVING STONE TO GRADE AS REQUIRED.
 - CONSTRUCT 40mm HEIGHT MOUNTABLE CURB (INTEGRAL).

APEGM
 Certificate of Authorization
 Earth Tech Canada Inc.
 No. 730 Expiry: April 30, 2004

METRIC
 WHOLE NUMBERS INDICATE MILLIMETRES
 DECIMALIZED NUMBERS INDICATE METRES

150 mm W.M.		150 mm W.M.		HYDRO		150 mm W.M.		WATERMAIN	
+	HYDRANT	+	HYDRANT	—	M.T.S.	+	HYDRANT	+	HYDRANT
+	VALVE	+	VALVE	—	CONCRETE	+	VALVE	+	VALVE
—	LAND DRAINAGE SEWER	—	LAND DRAINAGE SEWER	—	ASPHALT	—	LAND DRAINAGE SEWER	—	LAND DRAINAGE SEWER
—	WASTEWATER SEWER	—	WASTEWATER SEWER	—	PROPERTY LINE	—	WASTE WATER SEWER	—	WASTE WATER SEWER
○	MANHOLE	○	MANHOLE	—	SURVEY BAR	○	PROFILE	○	PROFILE
□	CATCH BASIN	□	CATCH BASIN	—	ELEVATION	□	N/W GUTTER	□	N/W GUTTER
▽	CURB INLET	▽	CURB INLET	—	TREE	○	S/E GUTTER	○	S/E GUTTER
—	JUNCTIONS	—	JUNCTIONS	—	SIDWALK RAMP	○	N/W SIDEWALK	○	N/W SIDEWALK
—	CULVERT	—	CULVERT	—	CONCRETE SIDEWALK	○	S/E SIDEWALK	○	S/E SIDEWALK
—	GAS	—	GAS	—	FENCE	○		○	
EXISTING	LEGEND - PLAN	PROPOSED	LEGEND - PLAN	PROPOSED	LEGEND - PROFILE	PROPOSED	LEGEND - PROFILE	PROPOSED	LEGEND - PROFILE

LOCATION APPROVED UNDERGROUND STRUCTURES

SUPV. U/G STRUCTURES COMMITTEE DATE

NOTE:
 LOCATION OF UNDERGROUND STRUCTURES AS SHOWN ARE BASED ON THE BEST INFORMATION AVAILABLE, BUT NO GUARANTEE IS GIVEN THAT ALL EXISTING UTILITIES ARE SHOWN OR THAT THE GIVEN LOCATIONS ARE EXACT. CONFIRMATION OF EXISTENCE AND EXACT LOCATION OF ALL SERVICES MUST BE OBTAINED FROM THE INDIVIDUAL UTILITIES BEFORE PROCEEDING WITH CONSTRUCTION.

NO.	REVISIONS	DATE	BY
1	ISSUED FOR CONSTRUCTION	APR 30/04	BC
A	ISSUED FOR REVIEW	MAR 30/04	BC

EARTH TECH

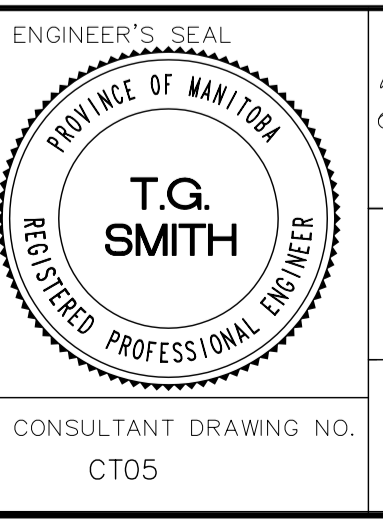
Earth Tech (Canada) Inc. Winnipeg, Manitoba 204.477.5381

DESIGNED BY	CHECKED BY
BC	TGS
DRAWN BY	APPROVED BY
BC	

HOR. SCALE: 1=250
 VERTICAL: 1=10

RELEASED FOR CONSTRUCTION BY: [Signature]

DATE: 2003/11/20



THE CITY OF WINNIPEG
 PUBLIC WORKS DEPARTMENT
 ENGINEERING DIVISION

SPRUCE STREET
 ST MATTHEWS AVENUE TO WOLEVER AVENUE

PAVEMENT RECONSTRUCTION
 PLAN/PROFILE
 STA. 2+50 TO STA. 3+90

CITY DRAWING NUMBER: SHEET 2 OF 3