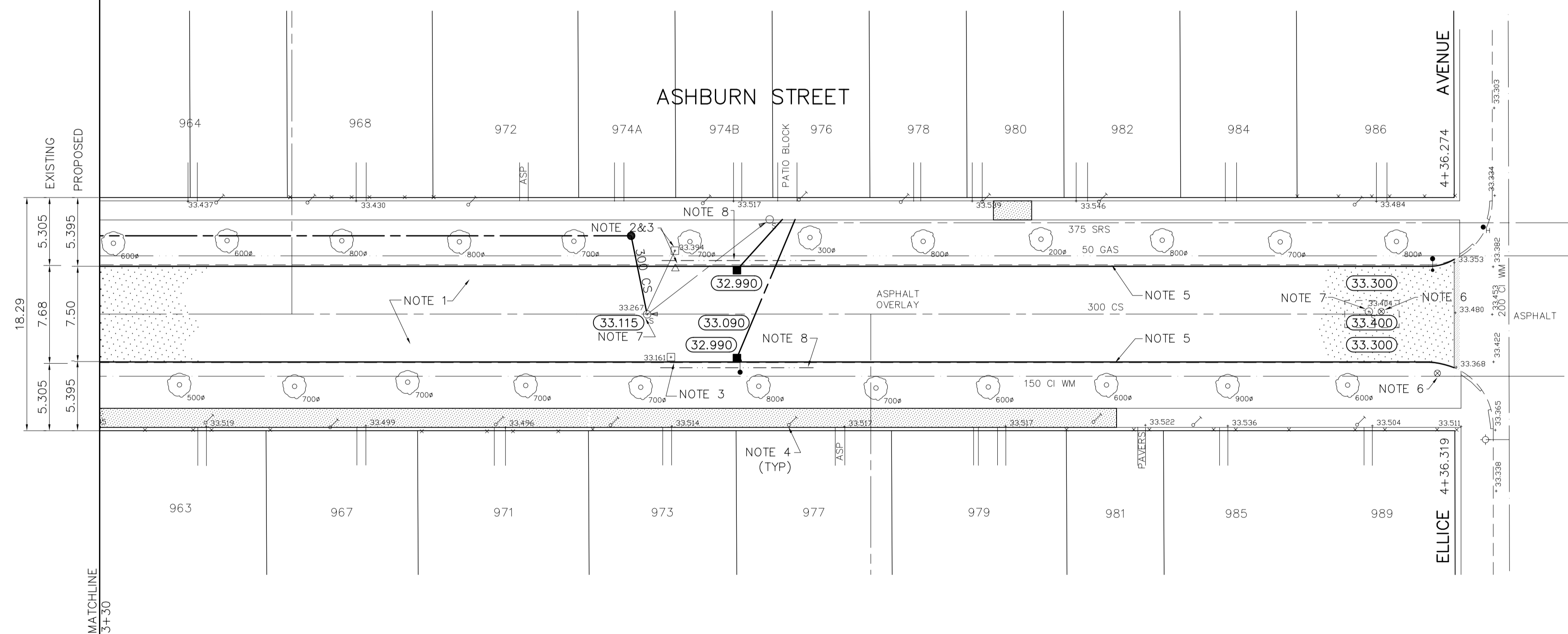
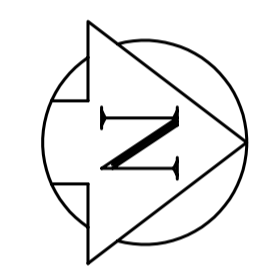


PAVEMENT RECONSTRUCTION SECTION



- REFERENCE NOTES**
- A. PAVEMENT DIMENSIONS ARE TO BACK OF CURB
 - B. ADD 200.000 TO OBTAIN GEODETIC DATUM
 - C. BASELINE IS CENTRE LINE RIGHT-OF-WAY
 - D. PROPERTY LINES OBTAINED FROM CITY OF WINNIPEG L.B.I.S., AND NO SCALE FACTOR WAS APPLIED.
 - E. REFER TO DWGS CT09 & CT10 FOR COMBINED SEWER RENEWAL WORKS

- CONSTRUCTION NOTES**
1. REMOVE EXISTING PAVEMENT AND CONSTRUCT NEW 150mm REINFORCED CONCRETE PAVEMENT.
 2. ABANDON EXISTING INLET.
 3. ABANDON EXISTING CATCHBASIN.
 4. ADJUST EXISTING CURBSTOPS TO GRADE AS REQUIRED.
 5. CONSTRUCT NEW CONCRETE BARRIER CURB (SEPARATE).
 6. ADJUST EXISTING WATERVALVE TO GRADE.
 7. ADJUST EXISTING MANHOLE/CATCHBASIN TO GRADE.
 8. INSTALL 150 SUBDRAIN.

APCGM
 Certificate of Authorization
 Earth Tech Canada Inc.
 No. 730 Expiry: April 30, 2004

METRIC
 WHOLE NUMBERS INDICATE MILLIMETRES
 DECIMALIZED NUMBERS INDICATE METRES

EXISTING	LEGEND	PLAN	PROPOSED	EXISTING	LEGEND	PLAN	PROPOSED	EXISTING	LEGEND	PROFILE	PROPOSED
150 mm W.M.	WATERMAIN	150 mm W.M.	150 mm W.M.	HYDRO	150 mm W.M.	WATERMAIN	150 mm W.M.	WATERMAIN	150 mm W.M.	WATERMAIN	150 mm W.M.
300mm L.D.S.	LAND DRAINAGE SEWER	300mm L.D.S.	300mm L.D.S.	M.T.S.	300mm L.D.S.	LAND DRAINAGE SEWER	300mm L.D.S.	HYDRANT	300mm L.D.S.	HYDRANT	300mm L.D.S.
250mm W.W.S.	WASTEWATER SEWER	250mm W.W.S.	250mm W.W.S.	CONCRETE	250mm W.W.S.	WASTE WATER SEWER	250mm W.W.S.	VALVE	250mm W.W.S.	VALVE	250mm W.W.S.
MANHOLE	MANHOLE	MANHOLE	MANHOLE	ASPHALT	MANHOLE	WASTE WATER SEWER	MANHOLE	PROPERTY LINE	MANHOLE	PROPERTY LINE	MANHOLE
CATCH BASIN	CATCH BASIN	CATCH BASIN	CATCH BASIN	PROPERTY LINE	CATCH BASIN	WASTE WATER SEWER	CATCH BASIN	CONCRETE	CATCH BASIN	CONCRETE	CATCH BASIN
CURB INLET	CURB INLET	CURB INLET	CURB INLET	SURVEY BAR	CURB INLET	WASTE WATER SEWER	CURB INLET	ASPHALT	CURB INLET	ASPHALT	CURB INLET
JUNCTIONS	JUNCTIONS	JUNCTIONS	JUNCTIONS	ELEVATION	JUNCTIONS	WASTE WATER SEWER	JUNCTIONS	PROPERTY LINE	JUNCTIONS	PROPERTY LINE	JUNCTIONS
CULVERT	CULVERT	CULVERT	CULVERT	PROPERTY LINE	CULVERT	WASTE WATER SEWER	CULVERT	ASPHALT	CULVERT	ASPHALT	CULVERT
GAS	GAS	GAS	GAS	SURVEY BAR	GAS	WASTE WATER SEWER	GAS	PROPERTY LINE	GAS	PROPERTY LINE	GAS
				ELEVATION		WASTE WATER SEWER		ASPHALT		ASPHALT	
				TREE		WASTE WATER SEWER		PROPERTY LINE		PROPERTY LINE	
				SIDEWALK RAMP		WASTE WATER SEWER		ASPHALT		ASPHALT	
				CONCRETE SIDEWALK		WASTE WATER SEWER		PROPERTY LINE		PROPERTY LINE	
				FENCE		WASTE WATER SEWER		ASPHALT		ASPHALT	

LOCATION APPROVED UNDERGROUND STRUCTURES

SUPV. U/G STRUCTURES COMMITTEE DATE

NOTE:
 LOCATION OF UNDERGROUND STRUCTURES AS SHOWN ARE BASED ON THE BEST INFORMATION AVAILABLE, BUT NO GUARANTEE IS GIVEN THAT ALL EXISTING UTILITIES ARE SHOWN OR THAT THE GIVEN LOCATIONS ARE EXACT. CONFIRMATION OF EXISTENCE AND EXACT LOCATION OF ALL SERVICES MUST BE OBTAINED FROM THE INDIVIDUAL UTILITIES BEFORE PROCEEDING WITH CONSTRUCTION.

NO.	REVISIONS	DATE	BY
1	ISSUED FOR CONSTRUCTION	APR 30/04	BC
A	ISSUED FOR REVIEW	MAR 30/04	BC

ENGINEER'S SEAL
 PROVINCE OF MANITOBA
T.G. SMITH
 REGISTERED PROFESSIONAL ENGINEER
 CONSULTANT DRAWING NO. CT03

THE CITY OF WINNIPEG
 PUBLIC WORKS DEPARTMENT
 ENGINEERING DIVISION

ASHBURN STREET
 ELLICE AVENUE TO ST MATTHEWS AVENUE

PAVEMENT RECONSTRUCTION
 PLAN/PROFILE
 STA. 3+30 TO ELLICE AVENUE

CITY DRAWING NUMBER
 SHEET 3 OF 3