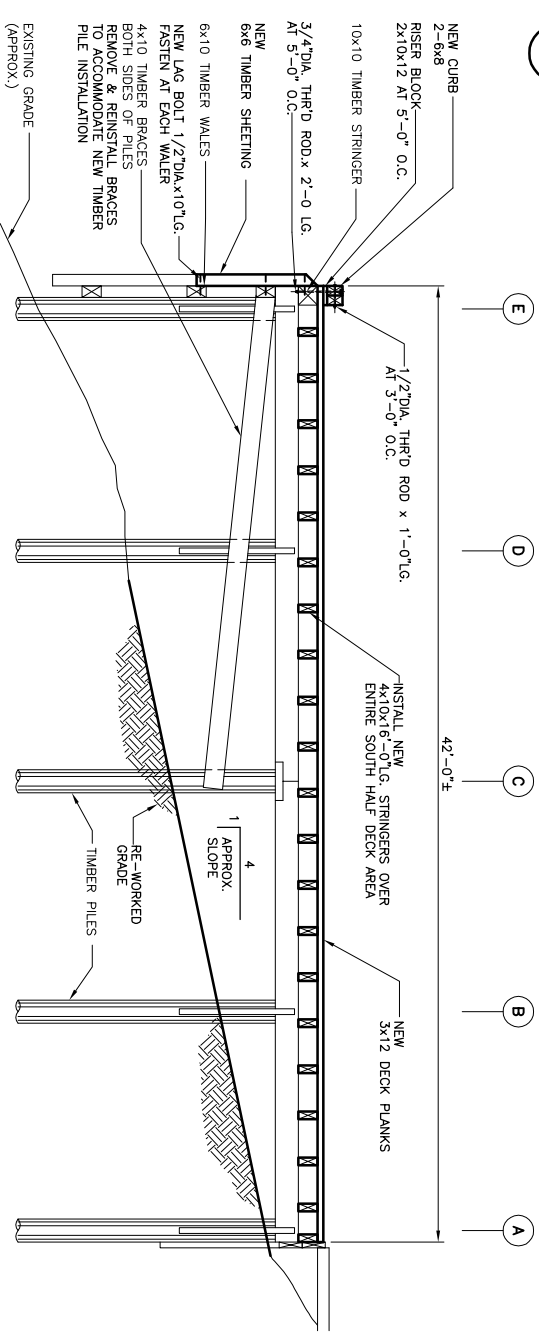
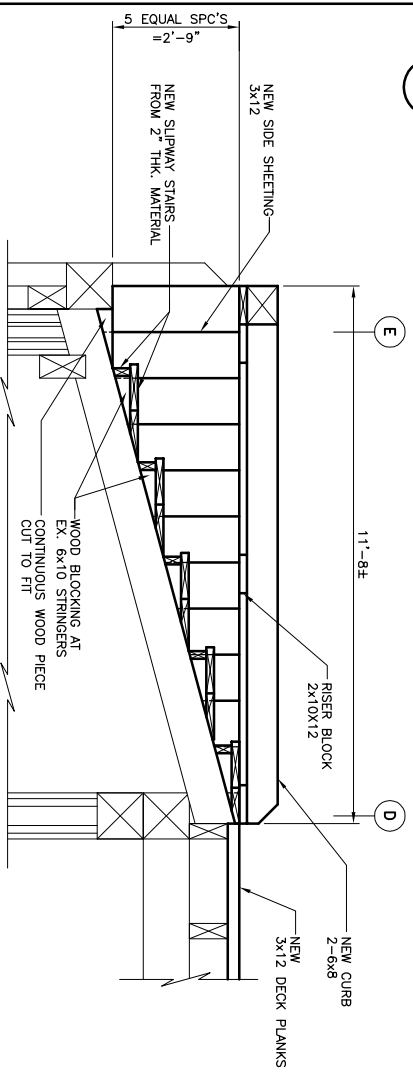


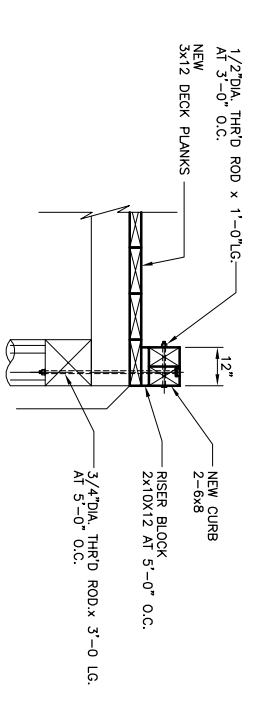
PLAN - REMEDIAL WORK
SCALE: 1"=30'-0"



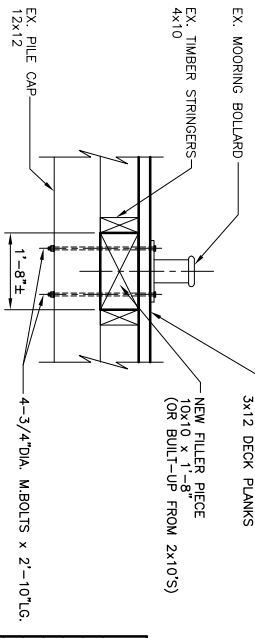
SECTION A - REMEDIAL WORK
SCALE: 1/4"=1'-0"



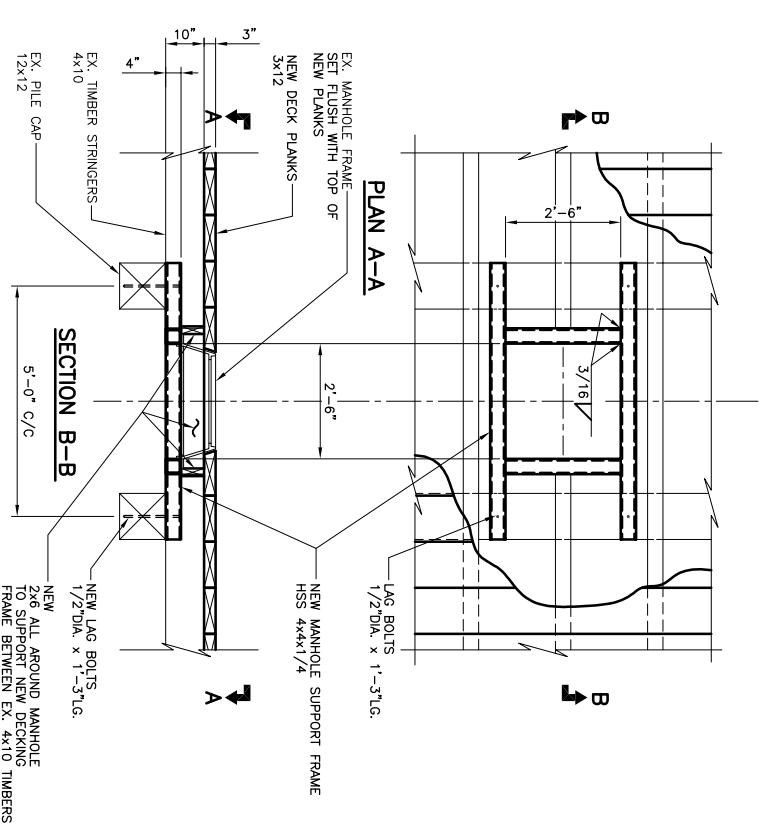
SECTION B - REMEDIAL WORK
SCALE: 1/2"=1'-0"



SECTION C - END CURB DETAILS
SCALE: 1/2"=1'-0"



DETAIL - MOORING BOLLARD (9 IN TOTAL)
SCALE: 1/2"=1'-0"



DETAIL - MANHOLE FRAMING
SCALE: 1/2"=1'-0"
TYPICAL AT 3 LOCATIONS

- NOTES:**
- TIMBER ERECTION SHALL BE IN ACCORDANCE WITH CAN/CSA-086.1.
 - TIMBER MATERIAL SHALL BE NO.2 OR BETTER, ROUGH, DOUGLAS FIR, COA TREATED.
 - DECK PLANKS SHALL BE 3x12 ROUGH FIR, SMOOTH ONE SIDE (S1S), FASTENED TO EACH 4x10 STRINGER WITH 2-8" LONG SPIKES. ALTERNATIVELY, THE 3x12 PLANKS MAY BE SUBSTITUTED (DEPENDING ON DELIVERY) WITH 2 PLYS OF 2x12 COMMON NAULS. THE 2 PLY ARRANGEMENT SHALL BE FASTENED TOGETHER WITH 3-3" COMMON NAULS AT 2'-0" O.C. JOINTS IN THE 2 PLY ARRANGEMENT SHALL BE STAGGERED.
 - NAULS AND SPIKES SHALL BE GALVANIZED AND MEET THE REQUIREMENT OF CSA B111.
 - NEW STEEL, HARDWARE, FASTENING MATERIALS AND FASTENERS SHALL BE HOT-DIPPED GALVANIZED TO CSA G164.
 - DECK IS DESIGNED TO SUPPORT LIVE LOADING AS FOLLOWS:
U.D.L. = 100 PSF (4.8 KPQ)
CONCENTRATED LOAD = 2400 lb. (11 KN)

NO.		ISSUED FOR CONSTRUCTION		DATE		BY		R.M.		DATE	
0		ISSUED FOR CONSTRUCTION		MAR. 10/04		BY		R.M.		DATE	
NO.		REVISIONS		DATE		BY		R.M.		DATE	

KGS CONSULTING ENGINEERS & PROJECT MANAGERS
WINNIPEG

DESIGNED BY: R.M.
DRAWN BY: R.N.
HORIZ. SCALE: AS NOTED
VERTICAL: AS NOTED
DATE: FEB. 4/04

CHECKED BY: THUNDER BAY
APPROVED BY:

CONSULTANT DRAWING NO. 03-0107-13-02

THE CITY OF WINNIPEG
PLANNING PROPERTY AND DEVELOPMENT
SERVICES DEPARTMENT

ALEXANDER DOCK
SOUTH HALF DOCK REHABILITATION
REMEDIAL WORK DETAILS

SHEET 2 OF 3
CAD FILE DRAWING NUMBER 03-0107-13-02.dwg
CITY DRAWING NUMBER P-

APRGIN
Certificate of Authorization
KGS Group
No. 245 Expiry: April 30, 2004