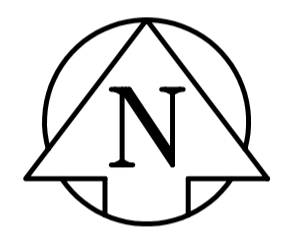


TYPICAL CROSS SECTION

DESCRIPTION	RIM	INVERT			
		NORTH	SOUTH	EAST	WEST
CB 5	31.630			30.030	
CB 6	31.875				31.275
CB 7	31.740		30.140		
CB 8	31.740	30.140			



- REFERENCE NOTES**
- BASELINE IS CENTRE OF RIGHT-OF-WAY.
 - LEGAL PLAN - L.B.I.S.
 - ADD 200.000 TO OBTAIN GEODETIC DATUM (PLAN ONLY).
 - PAVEMENT DIMENSIONS ARE TO BACK OF CURB.
 - EARTH TECH FIELD BOOK NOS. 4111, 4281.

- CONSTRUCTION NOTES**
- REMOVE EXISTING PAVEMENT AND CONSTRUCT NEW 230mm PLAIN DOWELLED CONCRETE PAVEMENT.
 - CONSTRUCT NEW 200mm PLAIN DOWELLED CONCRETE PAVEMENT.
 - CONSTRUCT NEW 200mm REINFORCED CONCRETE PAVEMENT.
 - CONSTRUCT NEW 50mm ASPHALTIC CONCRETE OVERLAY.
 - INSTALL NEW CURB & GUTTER INLET c/w CATCHBASIN (SD024) AND CONNECT NEW 250 LEAD TO EXISTING 300 MANHOLE.
 - INSTALL NEW CURB & GUTTER INLET c/w CATCHBASIN (SD024) AND CONNECT NEW 250 LEAD TO EXISTING 600 COMBINED SEWER.
 - ABANDON EXISTING DRAINAGE INLET.
 - ABANDON EXISTING CATCHBASIN.
 - ADJUST EXISTING CATCHBASIN/MANHOLE FRAME AND COVER.
 - ADJUST EXISTING WATERMAIN VALVE BOX TO GRADE.
 - INSTALL NEW 50mm CAST IRON RISER RING.
 - INSTALL 150mm SUBDRAIN.
 - ADJUST EXISTING CURB STOP BOX TO GRADE.
 - RELOCATE EXISTING TRAFFIC SIGNALS POLE (BY OTHERS).
 - REMOVE EXISTING MTS POLE (BY OTHERS).
 - RELOCATE EXISTING HYDRO POLE (BY OTHERS).
 - REMOVE AND REINSTALL ALUMINUM BALANCED BARRIER GUARDRAIL.
 - RELOCATE EXISTING CHAIN LINK FENCE.
 - REMOVE EXISTING ADVERTISING SIGN (BY OTHERS).
 - ADJUST EXISTING HYDRO MANHOLE (BY OTHERS).
 - INSTALL NEW CATCHBASIN (SD025) AND CONNECT NEW 250 LEAD TO EXISTING 600 COMBINED SEWER.
 - CONSTRUCT CONCRETE RETAINING CURB IN WINDOW WELL.
 - PROPOSED WATERMAIN (BY OTHERS).



METRIC
WHOLE NUMBERS INDICATE MILLIMETRES
DECIMALIZED NUMBERS INDICATE METRES

150 mm W.M.	WATERMAIN	150 mm W.M.	HYDRO	×	PROFILE
+	HYDRANT	+	M.T.S.	○	NORTH GUTTER
○	VALVE	+	CONCRETE	○	SOUTH GUTTER
—	LAND DRAINAGE SEWER	—	ASPHALT	◇	NORTH PROPERTY LINE
—	WASTEWATER SEWER	—	PROPERTY LINE	○	SOUTH PROPERTY LINE
○	MANHOLE	+	SURVEY BAR		
□	CATCH BASIN	+	ELEVATION		
▽	CURB INLET	+	TREE		
+	JUNCTIONS	+	SIDEWALK RAMP		
—	CULVERT	+	CONCRETE SIDEWALK		
—	GAS	+	FENCE		
EXISTING	LEGEND - PLAN	PROPOSED	EXISTING	LEGEND - PLAN	PROPOSED
EXISTING	LEGEND - PROFILE	PROPOSED	EXISTING	LEGEND - PROFILE	PROPOSED

LOCATION APPROVED UNDERGROUND STRUCTURES
ORIGINAL SIGNED AND DATED 04/29/04
SUPPLY U/G STRUCTURES DATE COMMITTEE

NOTE:
LOCATION OF UNDERGROUND STRUCTURES AS SHOWN ARE BASED ON THE BEST INFORMATION AVAILABLE, BUT NO GUARANTEE IS GIVEN THAT ALL EXISTING UTILITIES ARE SHOWN OR THAT THE GIVEN LOCATIONS ARE EXACT. CONFIRMATION OF EXISTENCE AND EXACT LOCATION OF ALL SERVICES MUST BE OBTAINED FROM THE INDIVIDUAL UTILITIES BEFORE PROCEEDING WITH CONSTRUCTION.

NO.	REVISIONS	DATE	BY
0	ISSUED FOR CONSTRUCTION	04/04	KWR
A	ISSUED FOR REVIEW	03/04	KWR

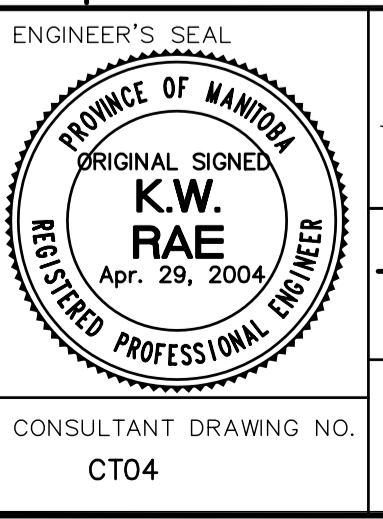
EARTH TECH
Earth Tech (Canada) Inc. Winnipeg, Manitoba 204.477.5381

DESIGNED BY: BK, BC, KWR
CHECKED BY: KWR, BC

DRAWN BY: BC, BK
APPROVED BY: ORIGINAL SIGNED

HOR. SCALE: 1:250
VERTICAL: 1:10

RELEASED FOR CONSTRUCTION BY: ORIGINAL SIGNED AND DATED 04/29/04



THE CITY OF WINNIPEG
PUBLIC WORKS DEPARTMENT
ENGINEERING DIVISION

LOGAN AVENUE
TRINITY STREET (RAILWAY) TO REITTA STREET
STREET RECONSTRUCTION

PLAN/PROFILE
STATION 1+60 TO STATION 3+00

CITY DRAWING NUMBER: P-3249-04
SHEET 4 OF 7