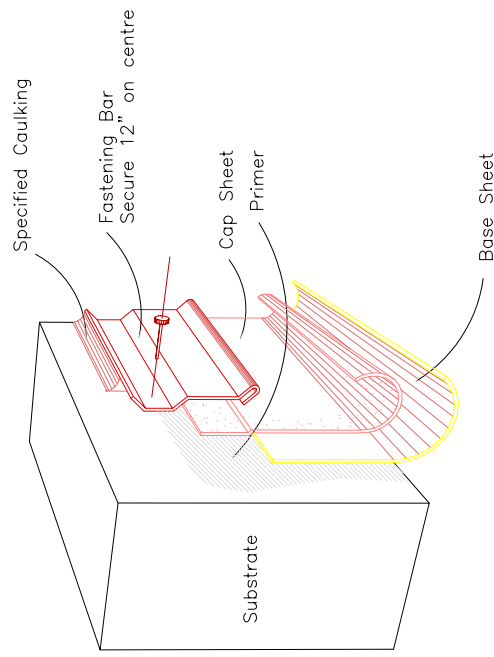
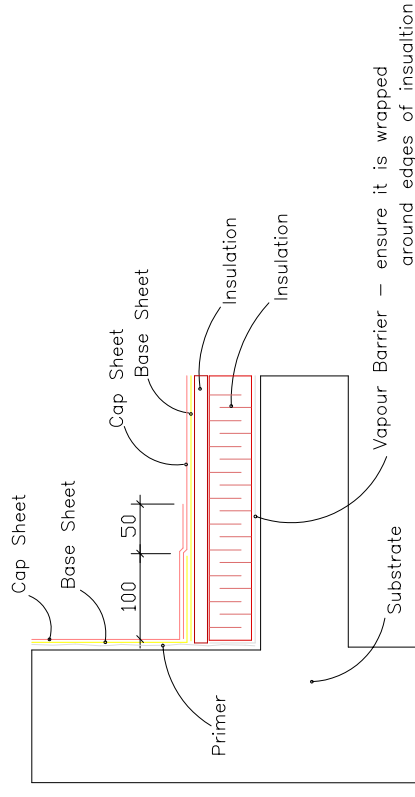


Typical Fastening Bar

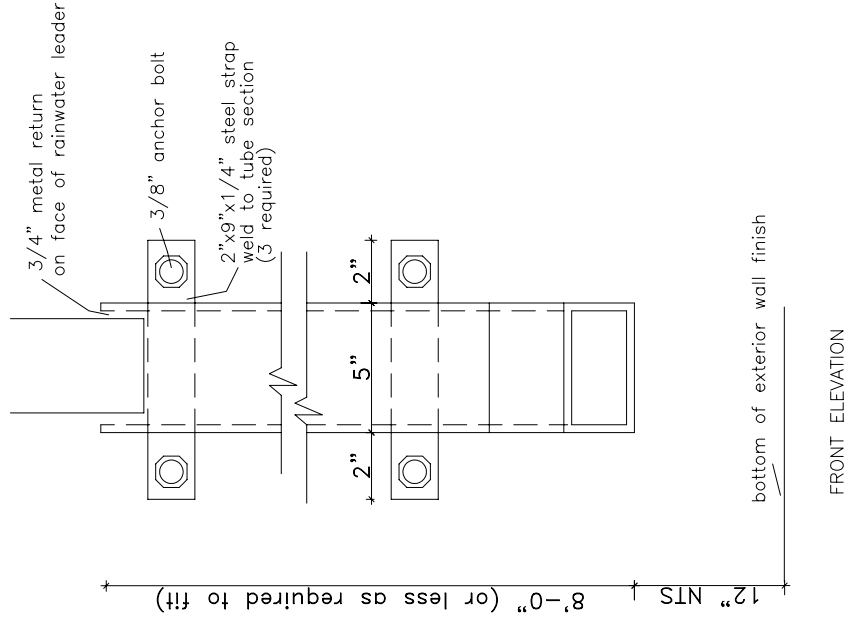


Typical Roof Edge Detail

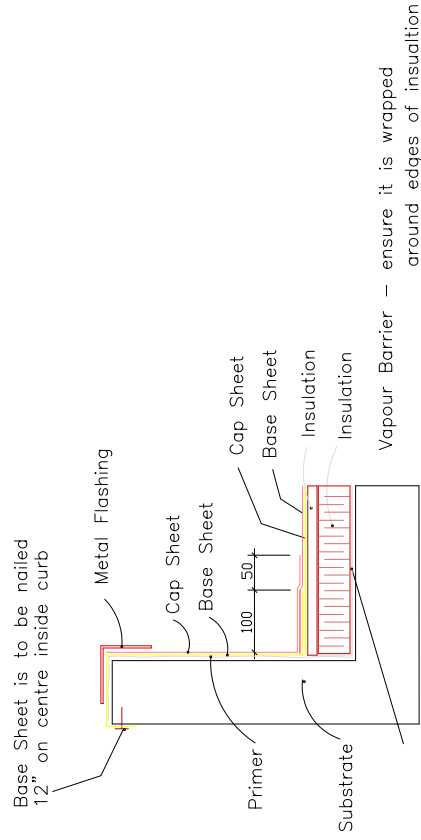


Note: Modified Bitumen stippling used in conjunction with 4 ply felt membrane is to have base sheet extend 12" onto flat and cap sheet 18" onto flat.

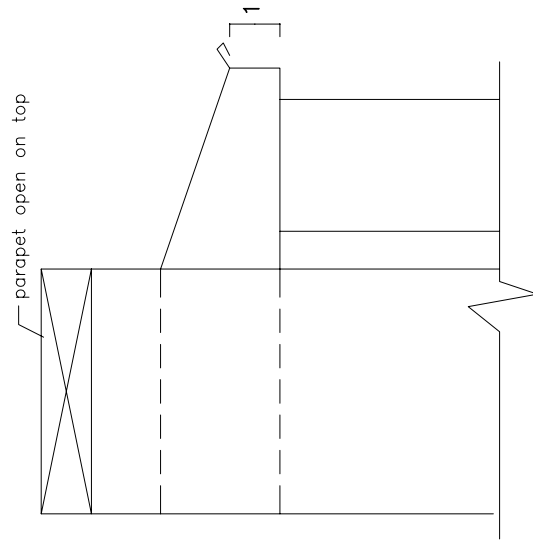
Structural Down Pipes



Mechanical Curb Flashing

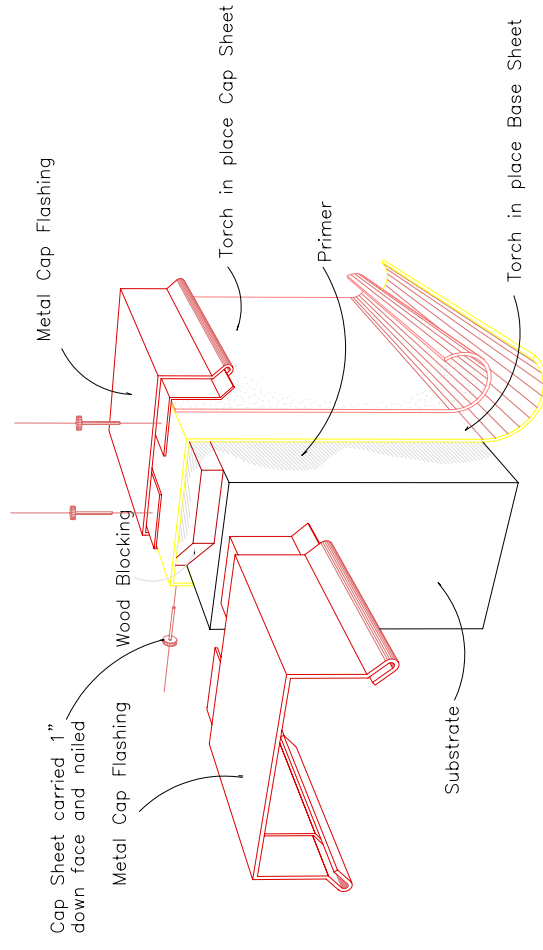


Typical Scupper



Notes:
Scupper shall be 4 sided through parapet
Scupper shall be minimum 8" wide x 6" high

Typical Parapet Cap



AGASSIZ CONSULTING GROUP

809 Pipeline Road, Winnipeg, Manitoba
Phone: 697-8091 Fax: 697-8039

Project: **Bronx Park Community Center**
131 Chelsea Place
Winnipeg, MB

Date: **February 26, 2004**

Drawing No. **D-1**

File no: **3215-04** Scale: **N.T.S.**

Note: Details are to be similar for inverted roof assemblies