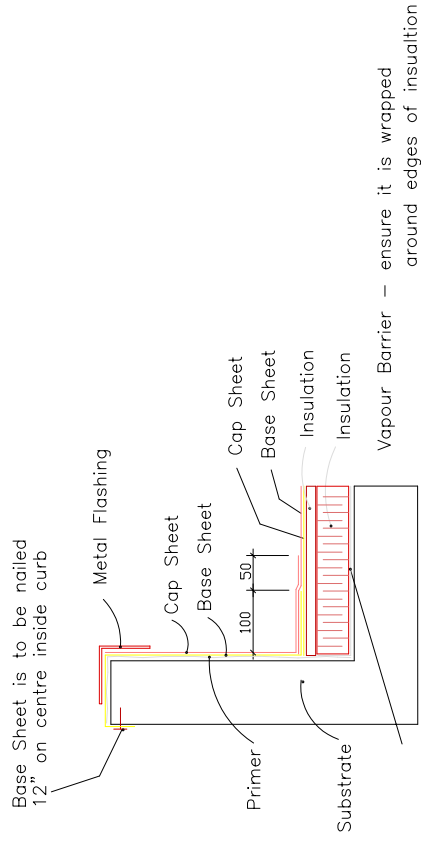
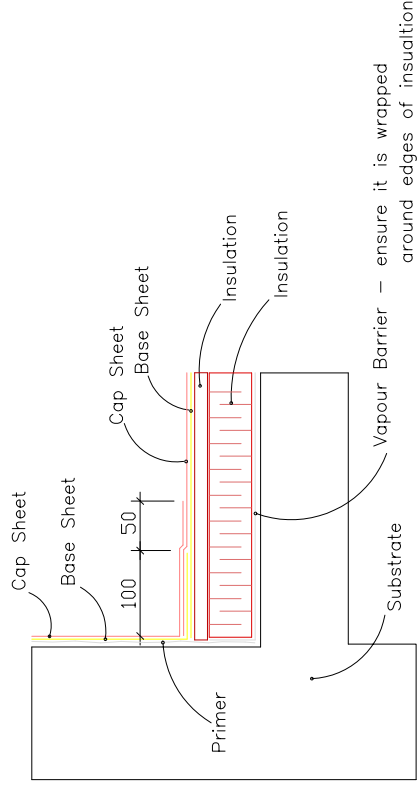


# Mechanical Curb Flashing

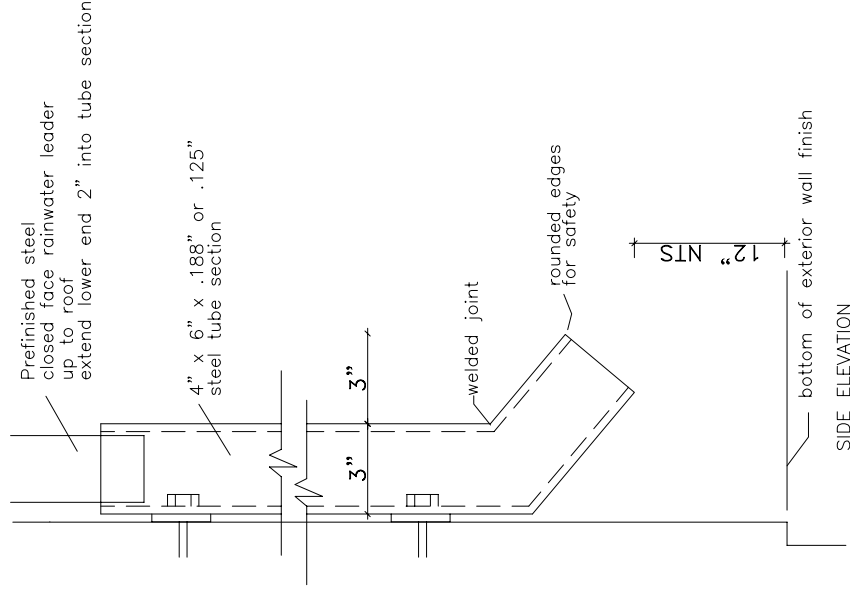
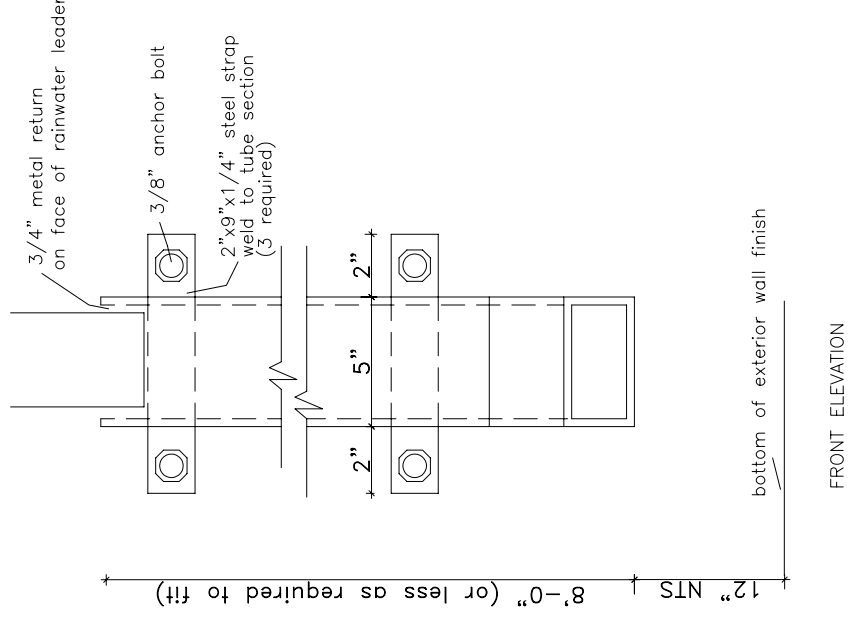


# Typical Roof Edge Detail

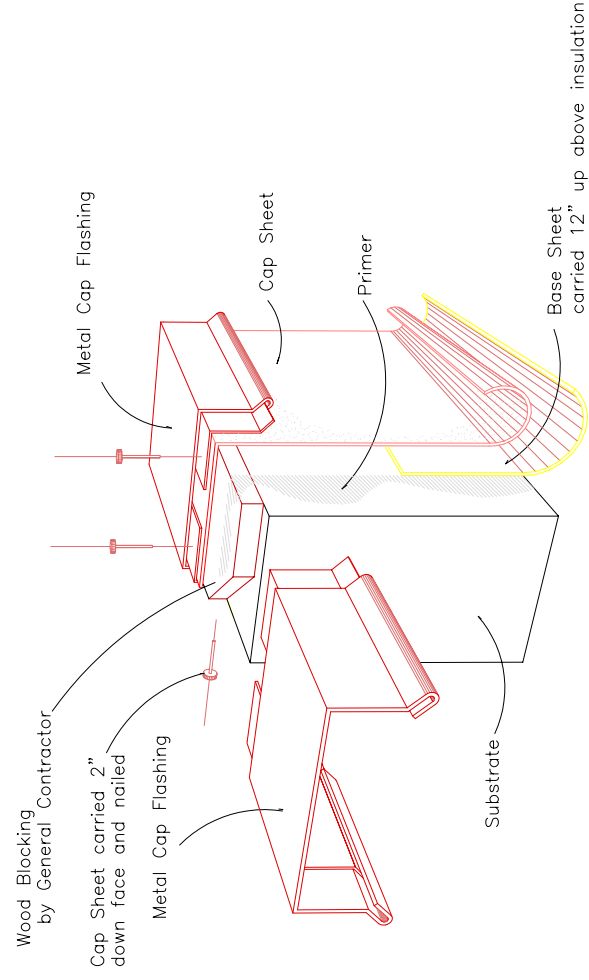


**Note: Modified Bitumen stipping used in conjunction with 4 ply felt membrane is to have base sheet extend 12" onto flat and cap sheet 18" onto flat.**

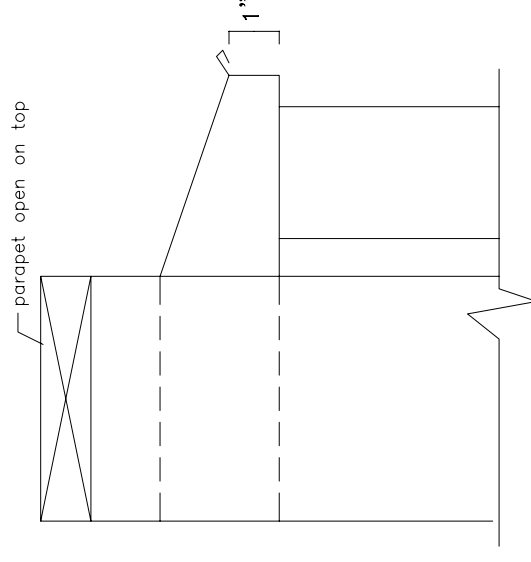
# Structural Down Pipes



# Typical Concrete Parapet



# Typical Scupper



**Notes:**  
Scupper shall be 4 sided through parapet  
Scupper shall be minimum 8" wide x 6" high

**Note: Details are to be similar for inverted roof assemblies**

## AGASSIZ CONSULTING GROUP

809 Pipeline Road, Winnipeg, Manitoba  
Phone: 697-8091 Fax: 697-8039

Project: Greendell Community Club  
75 Woodlawn  
Winnipeg, MB

Date: February 24, 2004

Drawing No. D-1

File no: 3134-04 Scale: N.T.S.