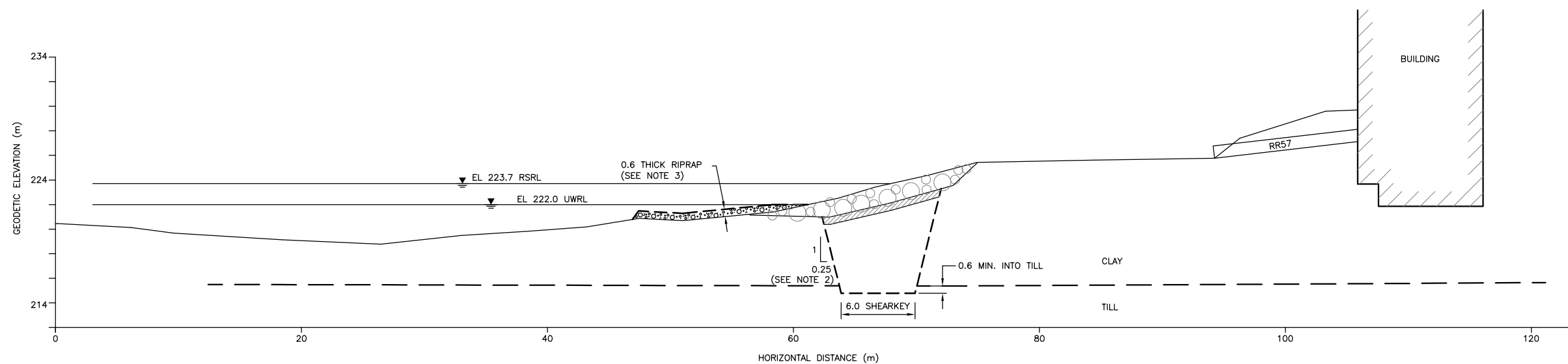
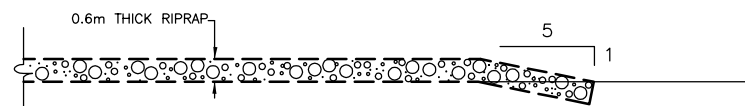


A SECTION
01



B SECTION
01



SECTION C-C
SCALE: 1:100

LEGEND

- RSRL REGULATED SUMMER RIVER LEVEL
- UWRL UNREGULATED WINTER RIVER LEVEL

NOTES:

1. TOPOGRAPHIC BANK PROFILES BASED ON KGS GROUP SURVEYS AND SOUNDINGS IN MAY 2003.
2. EXCAVATION SIDE WALLS SHALL BE KEPT AS VERTICAL AS SITE CONDITIONS DICTATE.
3. RIPRAP ABOVE THE WINTER ICE ELEVATION SHALL BE SUB-CUT INTO THE BANK AND PLACED FLUSH WITH ORIGINAL GROUND SURFACE. ALL EXCAVATED MATERIAL SHALL BE REMOVED OFF SITE.
4. ELEVATIONS FOLLOWED BY (AB) ARE ELEVATIONS ESTABLISHED FROM THE CITY OF WINNIPEG RECORD DRAWINGS. THESE ELEVATIONS SHOULD BE VARIFIED IN THE FIELD BEFORE CONSTRUCTION. ALL OTHER ELEVATIONS HAVE BEEN CONFIRMED BY KGS.

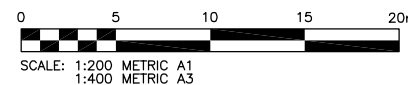
WARNING

IF POWER EQUIPMENT OR EXPLOSIVES ARE TO BE USED FOR EXCAVATION ON THIS PROJECT THE CONTRACTOR MUST:
 1) NOTIFY THE GAS COMPANY OF THE PROPOSED LOCATION OF EXCAVATION.
 2) TAKE PRECAUTION TO AVOID DAMAGE TO GAS COMPANY INSTALLATIONS.
 SEE PROVINCIAL REGULATION 210/72 FOR DETAILS.

METRIC

WHOLE NUMBERS INDICATE MILLIMETRES
 DECIMALIZED NUMBERS INDICATE METRES

APEGM
 Certificate of Authorization
 KGS Group
 No. 245 Expiry: April 30, 2004



LOCATION APPROVED UNDERGROUND STRUCTURES	
SUPV. U/G STRUCTURES COMMITTEE	DATE
NOTE: LOCATION OF UNDERGROUND STRUCTURES AS SHOWN ARE BASED ON THE BEST INFORMATION AVAILABLE BUT NO GUARANTEE IS GIVEN THAT THE GIVEN LOCATIONS ARE EXACT. CONFIRMATION OF EXISTENCE AND EXACT LOCATION OF ALL SERVICES MUST BE OBTAINED FROM THE INDIVIDUAL UTILITIES BEFORE PROCEEDING WITH CONSTRUCTION.	

B.M. 34-014 ELEV. 231.543	
0 ISSUED FOR TENDER	06/01/04
A ISSUED FOR REVIEW	22/12/03
NO. REVISIONS	DATE BY

KGS GROUP
 CONSULTING ENGINEERS & PROJECT MANAGERS
 WINNIPEG (204) 896-1209
 THUNDER BAY (807) 345-2233

DESIGNED BY D.A.	CHECKED BY R.Ke.
DRAWN BY D.W.\A.M.	APPROVED BY
HOR. SCALE: 1:200	RELEASED FOR CONSTRUCTION:
VERTICAL: 1:200	DATE

DATE DECEMBER 2003

ENGINEER'S SEAL
 PROVINCE OF MANITOBA
R.M. KENYON
 REGISTERED PROFESSIONAL ENGINEER

THE CITY OF WINNIPEG
 WATER & WASTE DEPARTMENT

DUMOULIN OUTFALL RIVERBANK STABILITY IMPROVEMENTS

SECTIONS A, B AND C

SHEET 02 OF 07
CAD FILE DRAWING NUMBER 03-0107-05.100-02rev0
CITY DRAWING NUMBER LD-2984

CONSULTANT DRAWING NO. 03-0107-05_02