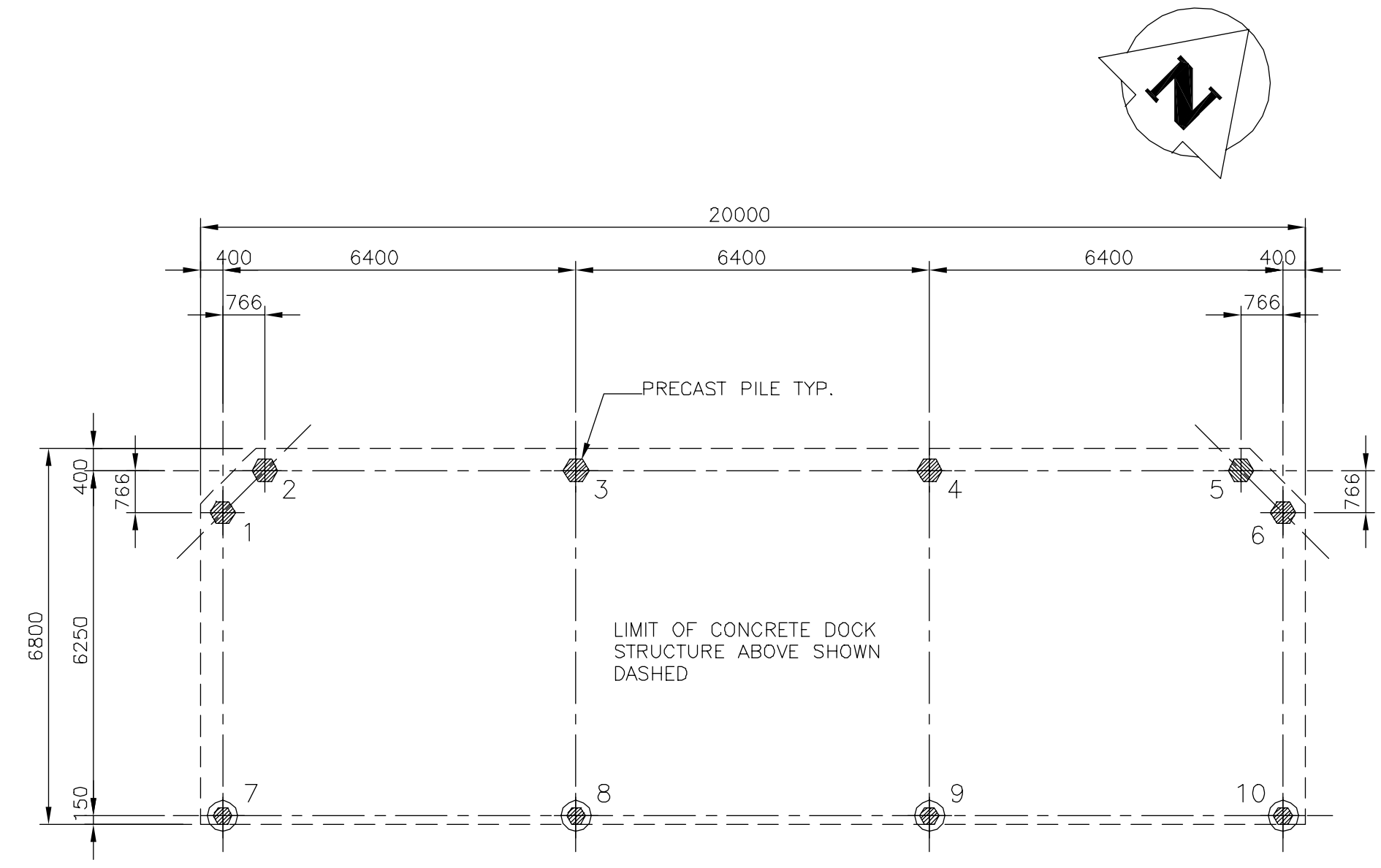
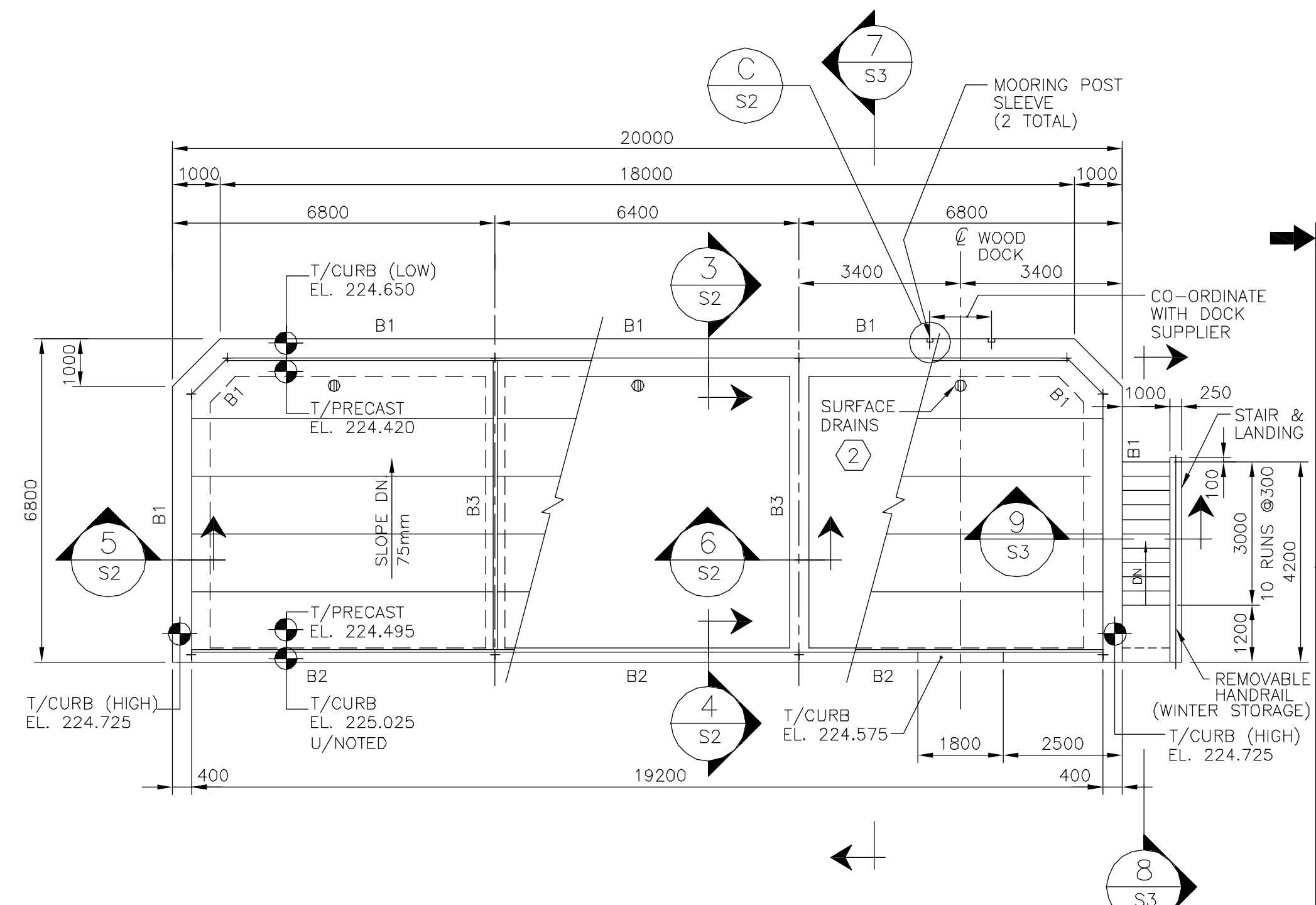


KEY PLAN
SCALE: 1:100 (24" X 36" SHEET)
1:200 (11" X 17" SHEET)



1 DOCK FOUNDATION PLAN
SCALE: 1:100 (24" X 36" SHEET)
1:200 (11" X 17" SHEET)

PILE SCHEDULE		
PILE NO.	PILE SIZE	TOP OF PILE CUT-OFF ELEV.
1 TO 6 INCL.	406 HEX.	223.400
7 & 10	305 HEX.	223.400
8 & 9	305 HEX.	222.840



2 DOCK FRAMING PLAN
SCALE: 1:100 (24" X 36" SHEET)
1:200 (11" X 17" SHEET)

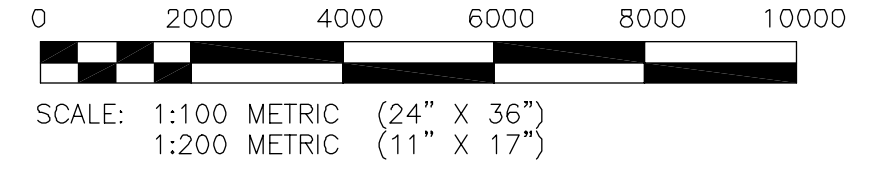
DESIGN LOADS (U/N)
LIVE LOAD ~ 6.0 kN/m²
DEAD LOAD ~ 9.1 kN/m²
TOTAL LOAD ~ 11.1 kN/m²

LEGEND

⊙ SURFACE DRAIN

KEY NOTES:

- ① PROVIDE 20mm DIAMETER FREE DRAIN HOLES THROUGH UNDERSIDE OF PRE-CAST HOLLOW CORE SLAB AT EACH END AND MIDSPAN OF EACH CORE. HOLES ARE TO BE CLEAR OF PRE-CAST GROUT. TYPICAL ALL SLABS.
- ② PROVIDE SURFACE DRAINS AS SHOWN ON PLANS AND DETAIL.



0	22/12/03	ISSUED FOR TENDER	RJL
REVISIONS / ISSUE			
A		SECTION LETTER OR DETAIL NUMBER	
B		DRAWING WHERE SECTION OR DETAIL IS DRAWN	
		DRAWING WHERE SECTION OR DETAIL WAS INDICATED	
		SECTION OR DETAIL SHOWN ON SAME DRAWING	
<p>KGS GROUP CONSULTING ENGINEERS & PROJECT MANAGERS WINNIPEG (204) 896-1209 THUNDER BAY (807) 345-2233</p>			
CLIENT: SCATLIFF+MILLER+MURRAY			
PROJECT: NORWOOD GROVE CARRAC DOCK			
DWG. DESCRIPTION: FOUNDATION AND FRAMING PLANS			
ENG. STAMP	DESIGNED: RJL	DRAWN: JF	
	APPROVED: (CHECKED)	DATE: NOVEMBER 2003	
	SCALE: AS NOTED	KGS DWG. NO. 03-109-09	REV: S1
	CLIENT DWG. NO.		REV: 0