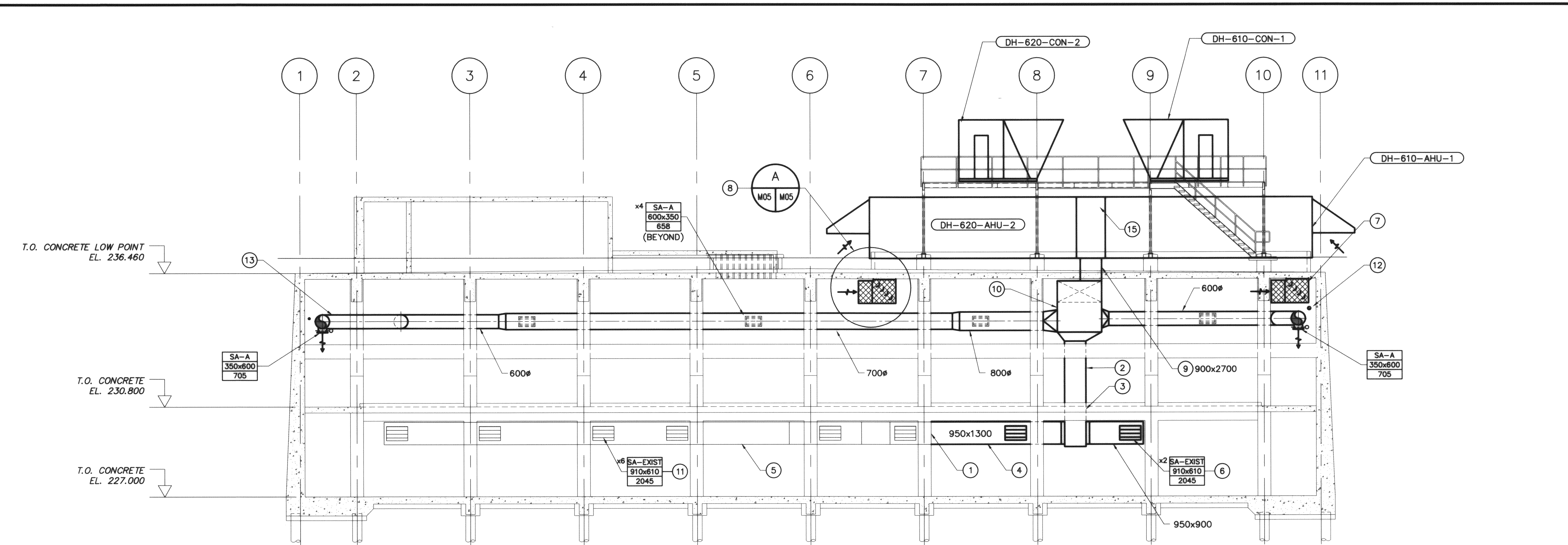


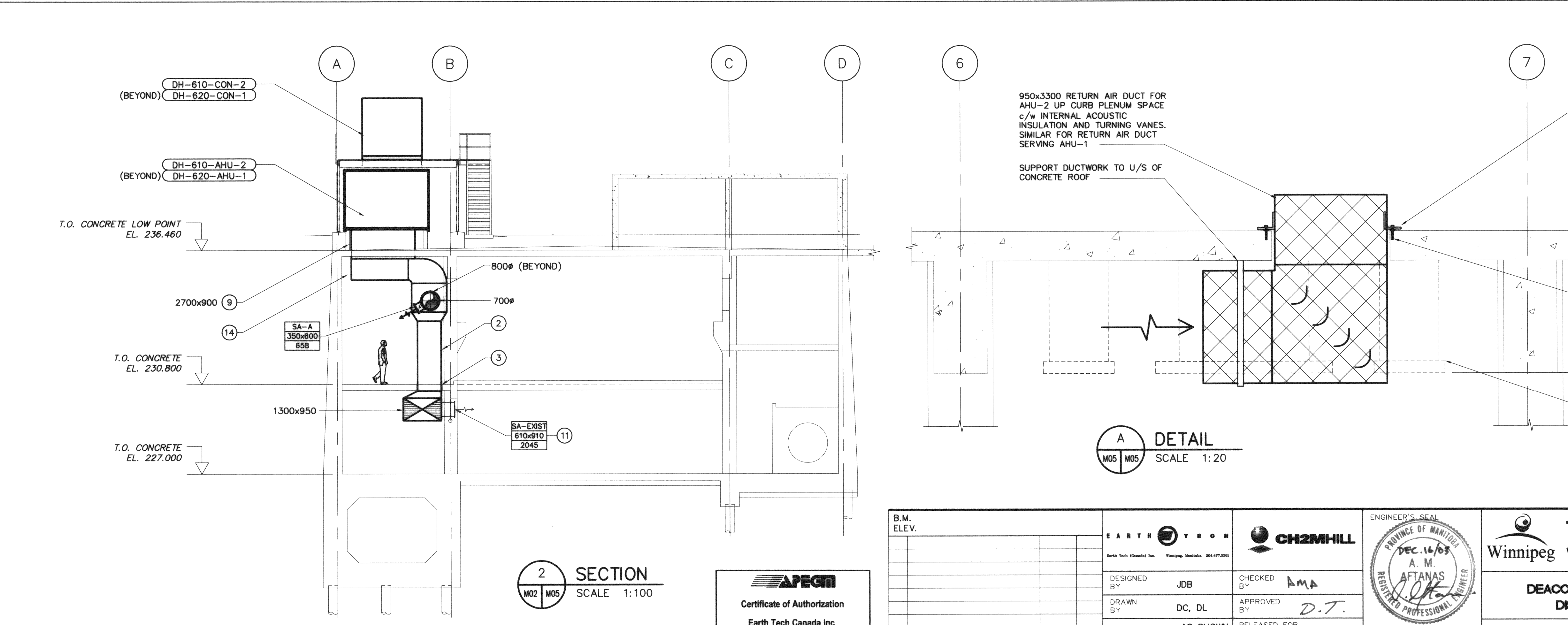
SHEET: C-5-11-01/2003



1 SECTION
SCALE 1:100

- DRAWING NOTES**
- NEW DUCT TO CONNECT INTO EXISTING DUCTWORK.
 - 1000x900 SUPPLY AIR DUCT DOWN FROM PLENUM c/w INTERNAL ACOUSTIC INSULATION.
 - COORDINATE WITH STRUCTURAL ON EXACT LOCATION AND SIZING OF FLOOR OPENING. SEE DRAWING D03.
 - PAINT NEW DUCTWORK SIMILAR TO EXISTING DUCTWORK. COORDINATE WITH DIVISION 9.
 - EXISTING DUCTWORK TO REMAIN.
 - REUSE EXISTING GRILLE c/w NEW BALANCING DAMPER, TURNING VANES AND DUCT BRANCH. SUPPORT BRANCH FROM BEAM ABOVE. BALANCE TO AIR FLOW INDICATED.
 - 3300x950 RETURN AIR PLENUM UP TO AHU-1 THROUGH ROOF OPENING c/w TURNING VANES. REMOVE AND REINSTALL EXISTING ACOUSTIC PANELS AS REQUIRED. SEE DETAIL A/M05.
 - 3300x950 RETURN AIR PLENUM UP TO AHU-2 THROUGH ROOF OPENING c/w TURNING VANES. REMOVE AND REINSTALL EXISTING ACOUSTIC PANELS AS REQUIRED. SEE DETAIL A/M05.
 - SUPPLY AIR PLENUM DOWN FROM AHU-1 AND AHU-2. SIZE AS NOTED.
 - TRANSITION SUPPLY AIR PLENUM DOWN TO 1875x1500.
 - EXISTING GRILLES AND BRANCHES TO BE REUSED. BALANCE TO AIR FLOW INDICATED.
 - EXISTING DIESEL GENERATOR EXHAUST PIPING TO REMAIN.
 - ROUTE SUPPLY AIR DUCTWORK SO AS TO AVOID EXISTING SANITARY PIPING IN THIS AREA. MAINTAIN ELEVATION OF DUCTWORK ABOVE CRANE.
 - TRANSITION SUPPLY AIR PLENUM DOWN TO 1875x900.
 - DOUBLE WALL AIR PLENUM SITE FABRICATED BETWEEN AIR HANDLING UNITS. AIR PLENUM IS TO BE WATER-TIGHT. FIELD FABRICATE BASE RAIL TO MATCH AHU'S. PLENUM IS TO BE INSULATED IN ACCORDANCE WITH THE SPECIFICATION.

- GENERAL NOTES**
- COORDINATE ROUTING OF REFRIGERATION PIPING, POWER WIRING AND CONTROL WIRING BETWEEN AIR HANDLING UNITS AND CONDENSING UNITS WITH UNIT MANUFACTURER AND CONTRACT ADMINISTRATOR.
 - ANY ACOUSTIC TILES REMOVED BY CONTRACTOR TO BE REPLACED. TILES DAMAGED DURING WORK SHALL BE REPLACED BY CONTRACTOR.
 - COORDINATE WITH OTHER TRADES SO AS TO PREVENT CONFLICTS.



A DETAIL
SCALE 1:20

2 SECTION
SCALE 1:100

APEGM
Certificate of Authorization
Earth Tech Canada Inc.
No. 730 Expiry: April 30, 2004

B.M. ELEV.	EARTH TECH Earth Tech (Canada) Inc. Winnipeg, Manitoba R2L 4P7 200	CH2MHILL	ENGINEER'S SEAL PROVINCE OF MANITOBA DEC. 16/03 A. M. AFTANAS REGISTERED PROFESSIONAL ENGINEER
DESIGNED BY: JDB	CHECKED BY: AMA	APPROVED BY: D.T.	CONSULTANT DRAWING NO. 63672-C5-M05
DRAWN BY: DC, DL	RELEASED FOR CONSTRUCTION BY:		
HOR. SCALE: AS SHOWN	DATE: 2003/11/17	DATE:	
VERTICAL SCALE:			
0 ISSUED FOR TENDER 03/12/12 DL			
NO. REVISIONS	DATE	BY	

THE CITY OF WINNIPEG
Winnipeg WATER AND WASTE DEPARTMENT

DEACON ULTRAVIOLET (UV) LIGHT DISINFECTION PROJECT

MECHANICAL - HVAC UPGRADE BUILDING SECTIONS

CITY FILE NUMBER
SHEET 5 OF 7
CITY DRAWING NUMBER
D-8423