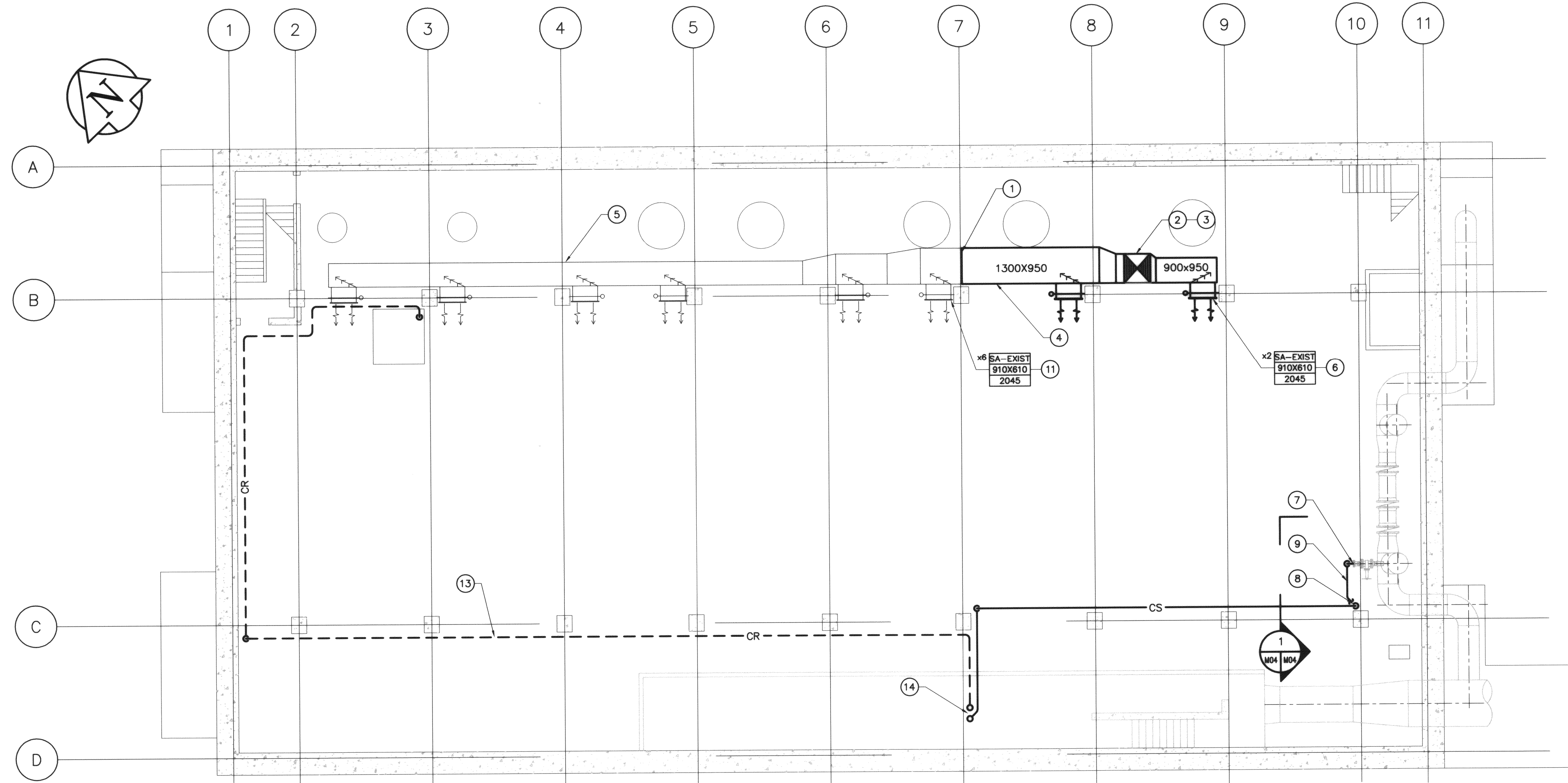
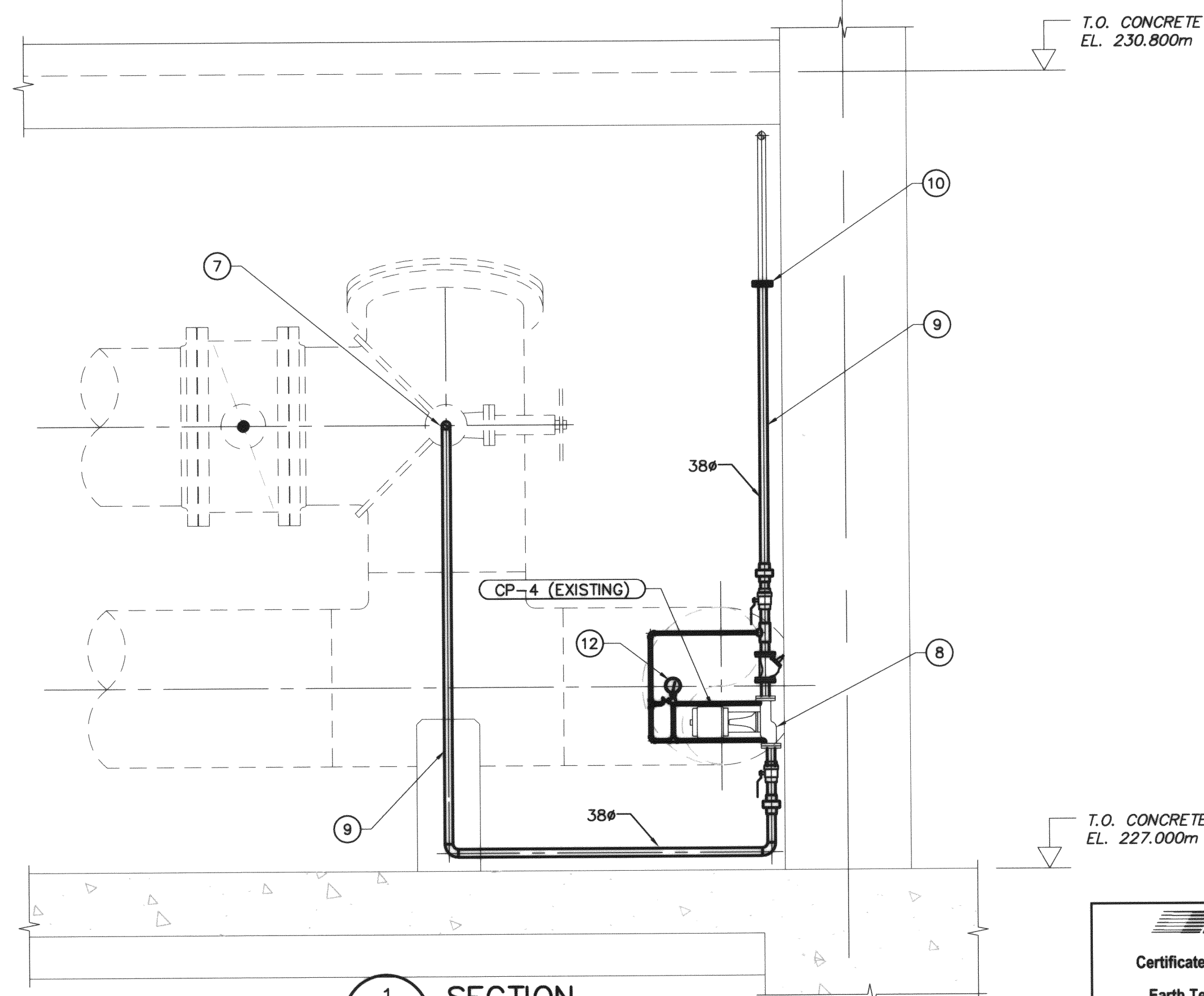


SHEET: DWG-A1- (1/2003)



PLAN ABOVE EL. 227.000m
SCALE: 1:100



1 SECTION
SCALE: 1:20

APEGM
Certificate of Authorization
Earth Tech Canada Inc.
No. 730 Expiry: April 30, 2004

DRAWING NOTES

- 1 NEW DUCT TO CONNECT INTO EXISTING DUCTWORK.
- 2 1000X900 SUPPLY AIR DUCT DOWN FROM PLENUM c/w INTERNAL ACOUSTIC INSULATION.
- 3 COORDINATE WITH STRUCTURAL ON EXACT LOCATION AND SIZING OF FLOOR OPENING. SEE DRAWING D03.
- 4 PAINT NEW DUCTWORK SIMILAR TO EXISTING DUCTWORK. COORDINATE WITH DIVISION 9.
- 5 EXISTING DUCTWORK TO REMAIN.
- 6 REUSE EXISTING GRILLE c/w NEW BALANCING DAMPER, TURNING VANES AND DUCT BRANCH. SUPPORT BRANCH FROM BEAM ABOVE. BALANCE TO AIR FLOW INDICATED.
- 7 CONNECT NEW 38# COOLING WATER SUPPLY INTO EXISTING BLIND FLANGE ON EXISTING 762# RELIEF INTERCONNECTION WITH THREADED NIPPLE.
- 8 EXISTING COOLING WATER SUPPLY PUMP CP-4 TO BE RELOCATED ADJACENT TO COLUMN ALONG GRIDLINES 'C-10'. SUPPORT FROM COLUMN. PROVIDE NEW STRAINER, UNIONS, CHECK VALVE AND SHUT OFF VALVES.
- 9 NEW PIPING TO BE INSULATED, JACKETED AND PAINTED TO MATCH EXISTING COOLING WATER SUPPLY PIPING.
- 10 CONNECT INTO EXISTING 38# COOLING WATER SUPPLY PIPING.
- 11 EXISTING GRILLES AND BRANCHES TO BE REUSED. BALANCE TO AIR FLOW INDICATED.
- 12 PRESSURE GAUGE.
- 13 EXISTING 38# CONTROL CONDENSER RETURN TO REMAIN.
- 14 COOLING WATER SUPPLY AND CONDENSER RETURN LINES SERVING EXISTING AIR CONDITIONING UNIT PAC-1 ABOVE.

GENERAL NOTES

1. COORDINATE WITH OTHER TRADES SO AS TO PREVENT CONFLICTS.

B.M. ELEV.	EARTH TECH		CH2MHILL				THE CITY OF WINNIPEG Winnipeg WATER AND WASTE DEPARTMENT	CITY FILE NUMBER SHEET 4 OF 7 CITY DRAWING NUMBER D-8422
	DESIGNED BY: JDB	CHECKED BY: A.M.A.	DRAWN BY: DC, DL	APPROVED BY: D.T.				
NO. REVISIONS	DATE	BY	DATE	DATE	DATE	CONSULTANT DRAWING NO. 63672-C5-M04		
0	ISSUED FOR TENDER	03/12/12	DL	2003/11/13				