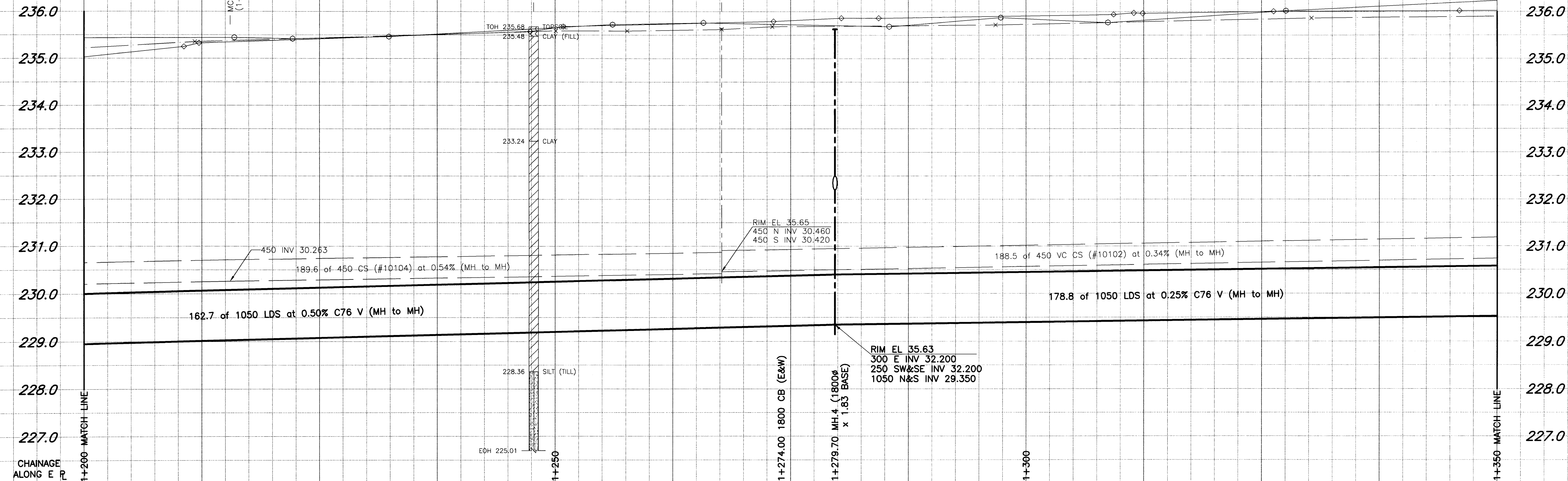
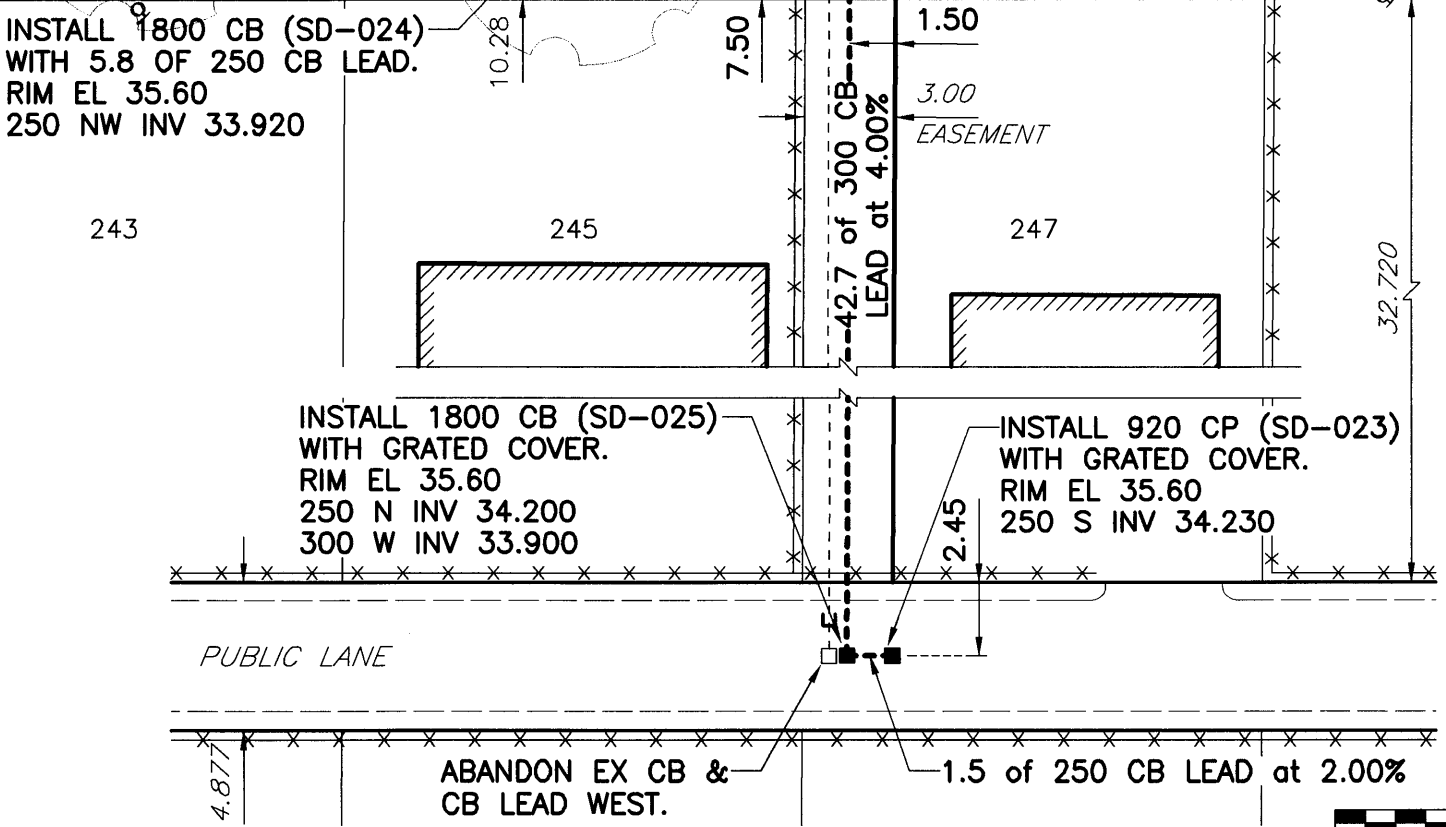
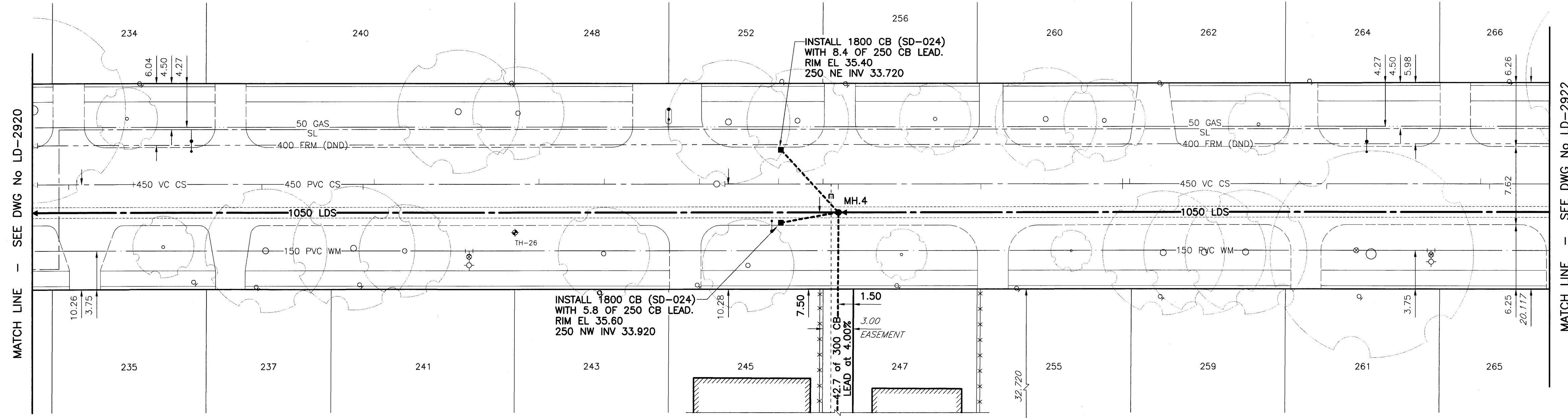


D SIZE 22" x 34" (558mm x 863mm)
 PLOT SCALE: 1:0.25
 FILE: STR01PR-R-DWG-2004-01-07 1:53pm ADL

EXISTING FEATURES



STRATHMILLAN ROAD



WARNING
 IF POWER EQUIPMENT OR EXPLOSIVES ARE TO BE USED FOR EXCAVATION ON THIS PROJECT, THE CONTRACTOR MUST:
 1) NOTIFY THE GAS COMPANY OF THE PROPOSED LOCATION OF EXCAVATION.
 2) TAKE PRECAUTION TO AVOID DAMAGE TO GAS COMPANY INSTALLATIONS.
 SEE PROVINCIAL REGULATION 140/92 FOR DETAILS

- CONSTRUCTION NOTES:**
- For detailed test hole information, see specifications.
 - The location of all services is to be confirmed in the field.
 - Install new sewers and catchbasin leads by trenchless methods wherever possible.
 - Renew/Rehabilitate catchbasins & renew catchbasin leads where noted.

EXISTING	LEGEND - PLAN	PROPOSED	EXISTING	LEGEND - PLAN	PROPOSED	EXISTING	LEGEND - PROFILE	PROPOSED
150 mm WM	WATERMAIN	150 mm WM	HYDRO	MTS	150 mm WM	WATERMAIN	HYDRANT	150 mm WM
300 mm LDS	LAND DRAINAGE SEWER	300 mm LDS	CONCRETE	ASPHALT	300 mm LDS	LAND DRAINAGE SEWER	300 mm LDS	300 mm LDS
250 mm WWS	WASTE WATER SEWER	250 mm WWS	ASPHALT	CURB STOP	250 mm WWS	WASTE WATER SEWER	250 mm WWS	250 mm WWS
MANHOLE	MANHOLE	MANHOLE	CURB STOP	REDUCER	MANHOLE	MANHOLE	MANHOLE	MANHOLE
CATCH BASIN	CATCH BASIN	CATCH BASIN	REDUCER	COUPLING	CATCH BASIN	CATCH BASIN	CATCH BASIN	CATCH BASIN
CURB INLET	CURB INLET	CURB INLET	COUPLING	ANODE	CURB INLET	CURB INLET	CURB INLET	CURB INLET
CULVERT	CULVERT	CULVERT	ANODE	WM MONITORING STATION	CULVERT	CULVERT	CULVERT	CULVERT
SURVEY BAR	SURVEY BAR	SURVEY BAR	WM MONITORING STATION	LAMP STANDARD	SURVEY BAR	SURVEY BAR	SURVEY BAR	SURVEY BAR
PIPE ABANDONMENTS	PIPE ABANDONMENTS	PIPE ABANDONMENTS	LAMP STANDARD	TREE	PIPE ABANDONMENTS	PIPE ABANDONMENTS	PIPE ABANDONMENTS	PIPE ABANDONMENTS

LOCATION APPROVED UNDERGROUND STRUCTURES

SUPR. U/G STRUCTURES DATE
 COMMITTEE

NOTE:
 LOCATION OF UNDERGROUND STRUCTURES AS SHOWN ARE BASED ON THE BEST INFORMATION AVAILABLE, BUT NO GUARANTEE IS GIVEN THAT ALL EXISTING UTILITIES ARE SHOWN OR THAT THE GIVEN LOCATIONS ARE EXACT. CONFIRMATION OF EXISTENCE AND EXACT LOCATION OF ALL SERVICES MUST BE OBTAINED FROM THE INDIVIDUAL UTILITIES BEFORE PROCEEDING WITH CONSTRUCTION.

NO.	REVISIONS	DATE	BY

UMA Engineering Ltd.
 Consulting • Engineering • Construction • Management Services

DESIGNED BY: FMI
 CHECKED BY: B. Morton
 DRAWN BY: ADL
 APPROVED BY: [Signature]
 HOR. SCALE: 1:250
 VERTICAL: 1:50
 RELEASED FOR CONSTRUCTION: [Signature]
 DATE: Jan 28/04

APEGM
 Certificate of Authorization
 UMA Engineering Ltd.
 No. 256 Expiry: April 30, 2004

PROFESSIONAL'S SEAL
 B. Morton
 B.A. MORTON
 Jan 28/04
 CONSULTANT DRAWING NO. 04
 D265-096-03

THE CITY OF WINNIPEG
 Winnipeg WATER AND WASTE DEPARTMENT

STRATHMILLAN/MOORGATE COMBINED SEWER RELIEF CONTRACT 4

STRATHMILLAN ROAD
 160m N of PORTAGE AVE.
 to 98m S of LODGE AVE.

SHEET 4 OF 8
 CITY DRAWING NUMBER
 LD-2921

Tender No. 522-2003