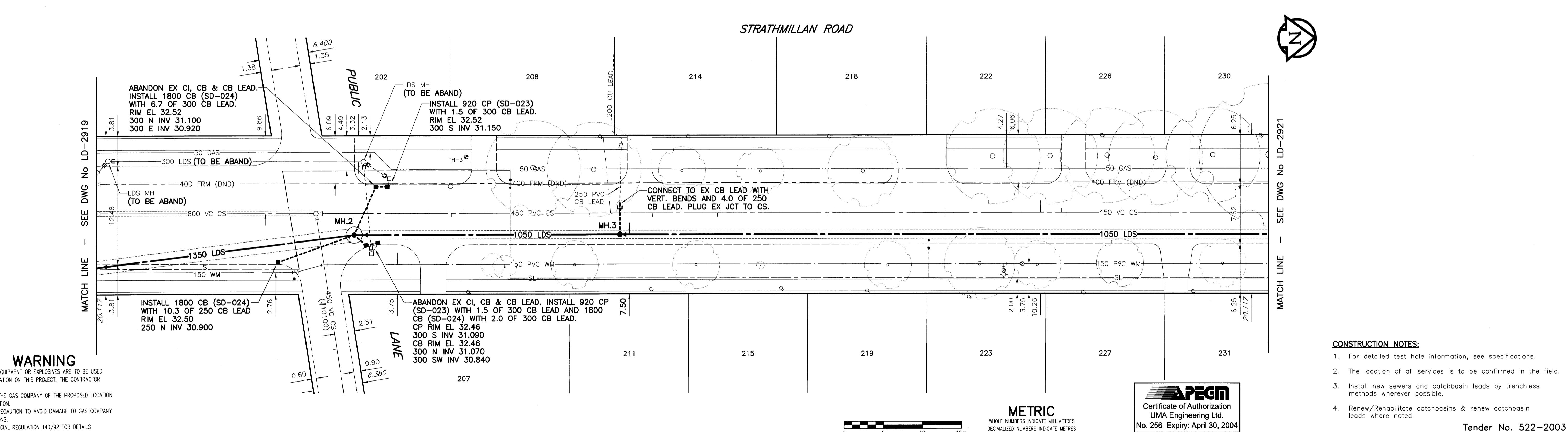
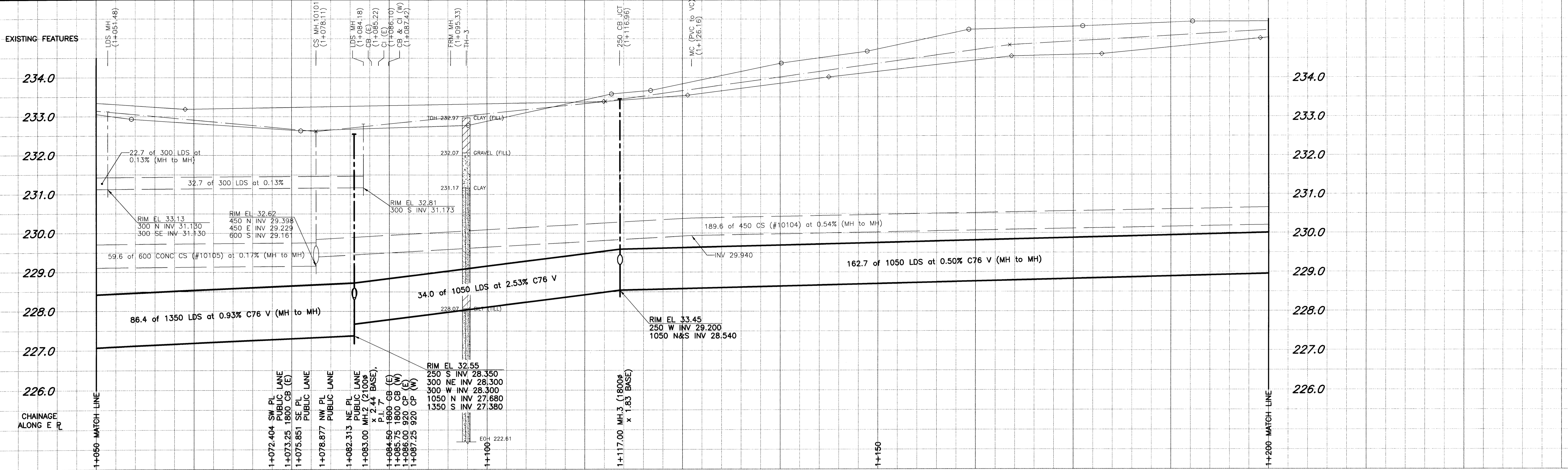


D SIZE 22" x 34" (558mm x 863mm)



WARNING
 IF POWER EQUIPMENT OR EXPLOSIVES ARE TO BE USED FOR EXCAVATION ON THIS PROJECT, THE CONTRACTOR MUST:
 1) NOTIFY THE GAS COMPANY OF THE PROPOSED LOCATION OF EXCAVATION.
 2) TAKE PRECAUTION TO AVOID DAMAGE TO GAS COMPANY INSTALLATIONS.
 SEE PROVINCIAL REGULATION 140/92 FOR DETAILS

- CONSTRUCTION NOTES:**
- For detailed test hole information, see specifications.
 - The location of all services is to be confirmed in the field.
 - Install new sewers and catchbasin leads by trenchless methods wherever possible.
 - Renew/Rehabilitate catchbasins & renew catchbasin leads where noted.

PLOT SCALE: 1:0.25
 FILE: STRDPR-DRG-2004-01-08 09:24am ADL

EXISTING	LEGEND - PLAN	PROPOSED	EXISTING	LEGEND - PLAN	PROPOSED	EXISTING	LEGEND - PROFILE	PROPOSED
150 mm WM	WATERMAIN	150 mm WM	---	HYDRO	---	150 mm WM	WATERMAIN	---
Hydrant symbol	HYDRANT	Hydrant symbol	MTS	MTS	MTS	Hydrant symbol	HYDRANT	---
Valve symbol	VALVE	Valve symbol	Gas symbol	GAS	Gas symbol	Valve symbol	VALVE	---
300 mm LDS	LAND DRAINAGE SEWER	300 mm LDS	Concrete symbol	CONCRETE	Concrete symbol	300 mm LDS	LAND DRAINAGE SEWER	---
250 mm WWS	WASTE WATER SEWER	250 mm WWS	Asphalt symbol	ASPHALT	Asphalt symbol	250 mm WWS	WASTE WATER SEWER	---
Manhole symbol	MANHOLE	Manhole symbol	Curb stop symbol	CURB STOP	Curb stop symbol	Profile symbol	PROFILE	---
Catch basin symbol	CATCH BASIN	Catch basin symbol	Reducer symbol	REDUCER	Reducer symbol	North/West profile symbol	NORTH/WEST	---
Curb inlet symbol	CURB INLET	Curb inlet symbol	Coupling symbol	COUPLING	Coupling symbol	South/East profile symbol	SOUTH/EAST	---
Culvert symbol	CULVERT	Culvert symbol	Anode symbol	ANODE	Anode symbol	Lamp standard symbol	LAMP STANDARD	---
Survey bar symbol	SURVEY BAR	Survey bar symbol	WM monitoring station symbol	WM MONITORING STATION	WM monitoring station symbol	Tree symbol	TREE	---
Pipe abandonment symbol	PIPE ABANDONMENTS	Pipe abandonment symbol						---

LOCATION APPROVED UNDERGROUND STRUCTURES

SUPR. U/G STRUCTURES DATE

NOTE:
 LOCATION OF UNDERGROUND STRUCTURES AS SHOWN ARE BASED ON THE BEST INFORMATION AVAILABLE. BUT NO GUARANTEE IS GIVEN THAT ALL EXISTING UTILITIES ARE SHOWN OR THAT THE GIVEN LOCATIONS ARE EXACT. CONFIRMATION OF EXISTENCE AND EXACT LOCATION OF ALL SERVICES MUST BE OBTAINED FROM THE INDIVIDUAL UTILITIES BEFORE PROCEEDING WITH CONSTRUCTION.

NO.	REVISIONS	DATE	BY

METRIC
 WHOLE NUMBERS INDICATE MILLIMETRES
 DECIMALIZED NUMBERS INDICATE METRES

UMA Engineering Ltd.
 Consulting • Engineering • Construction • Management Services

DESIGNED BY: FMI
 CHECKED BY: B. Morton
 DRAWN BY: ADL
 APPROVED BY: [Signature]
 HOR. SCALE: 1:250
 VERTICAL: 1:50
 DATE: 02/01/08

APEGM
 Certificate of Authorization
 UMA Engineering Ltd.
 No. 256 Expiry: April 30, 2004

PROFESSIONAL'S SEAL
B. Morton
 B.A. MORTON
 Jan 8/08
 REGISTERED PROFESSIONAL ENGINEER

CONSULTANT DRAWING NO. 03
 D265-096-03

THE CITY OF WINNIPEG
 WATER AND WASTE DEPARTMENT

STRATHMILLAN/MOORGATE COMBINED SEWER RELIEF CONTRACT 4

STRATHMILLAN ROAD
 9m N of PORTAGE AVE.
 to 160m N of PORTAGE AVE.

SHEET 3 OF 8
 CITY DRAWING NUMBER LD-2920
 REV

Tender No. 522-2003