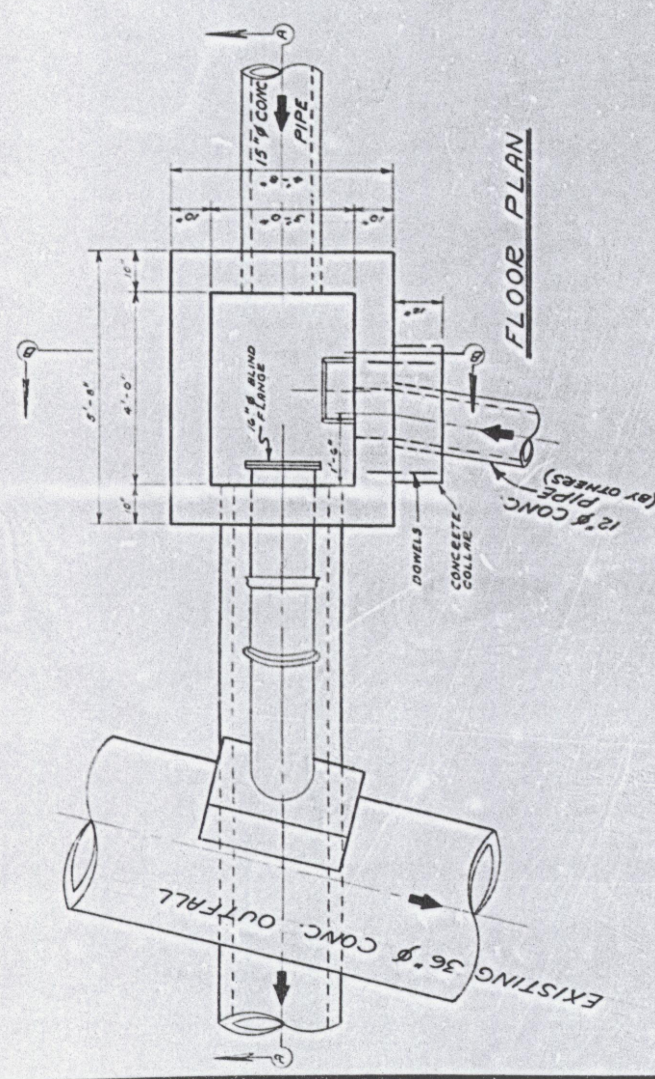
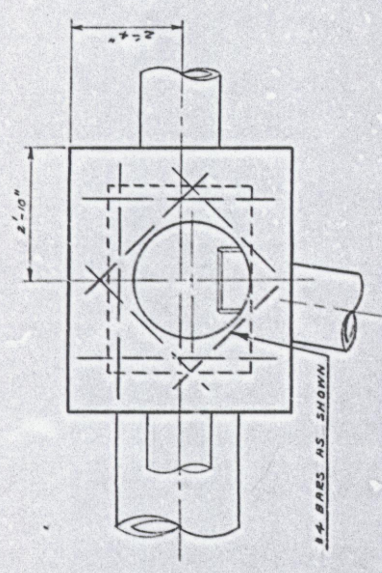


APPENDIX B

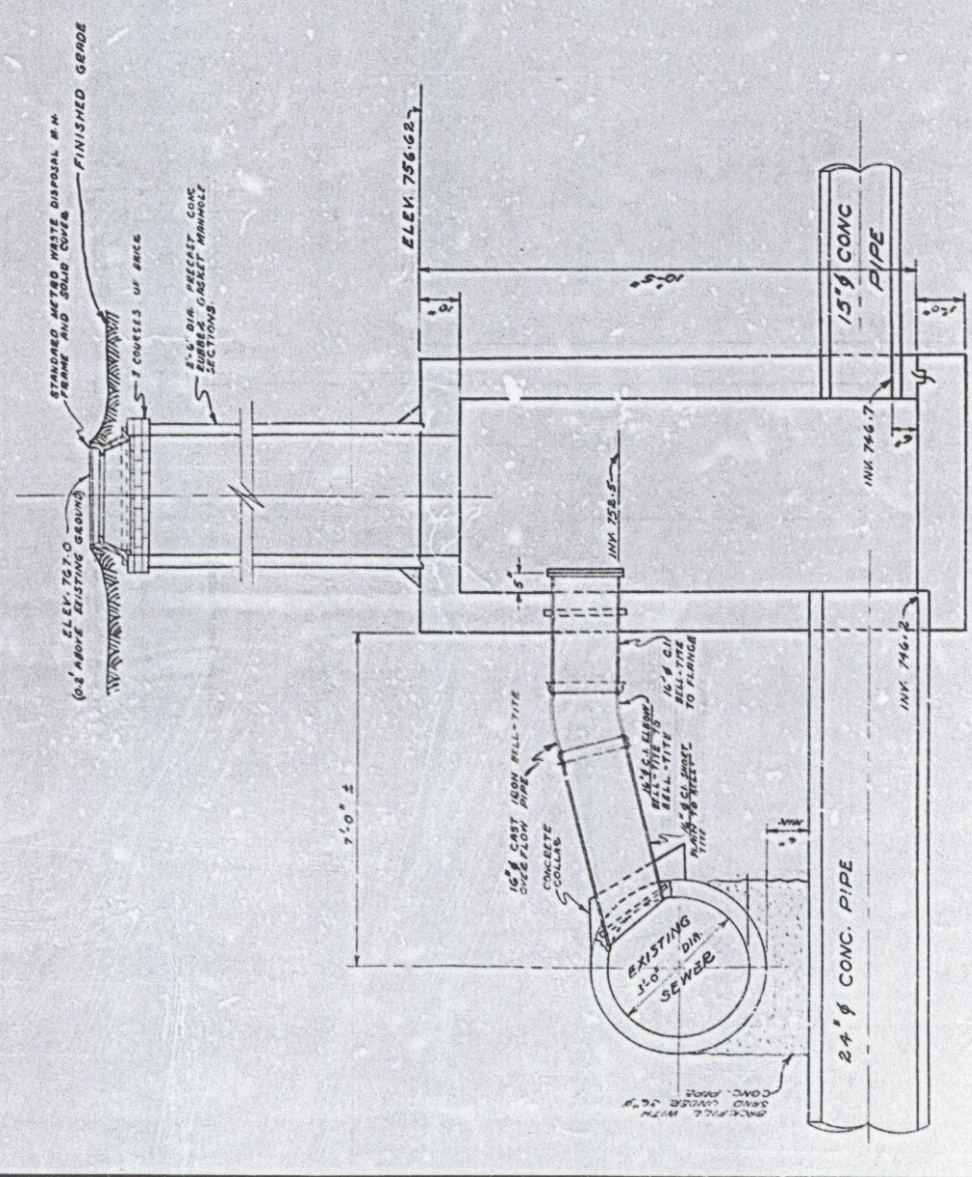
EXISTING COMMUNITER AND JUNCTION CHAMBER DRAWINGS



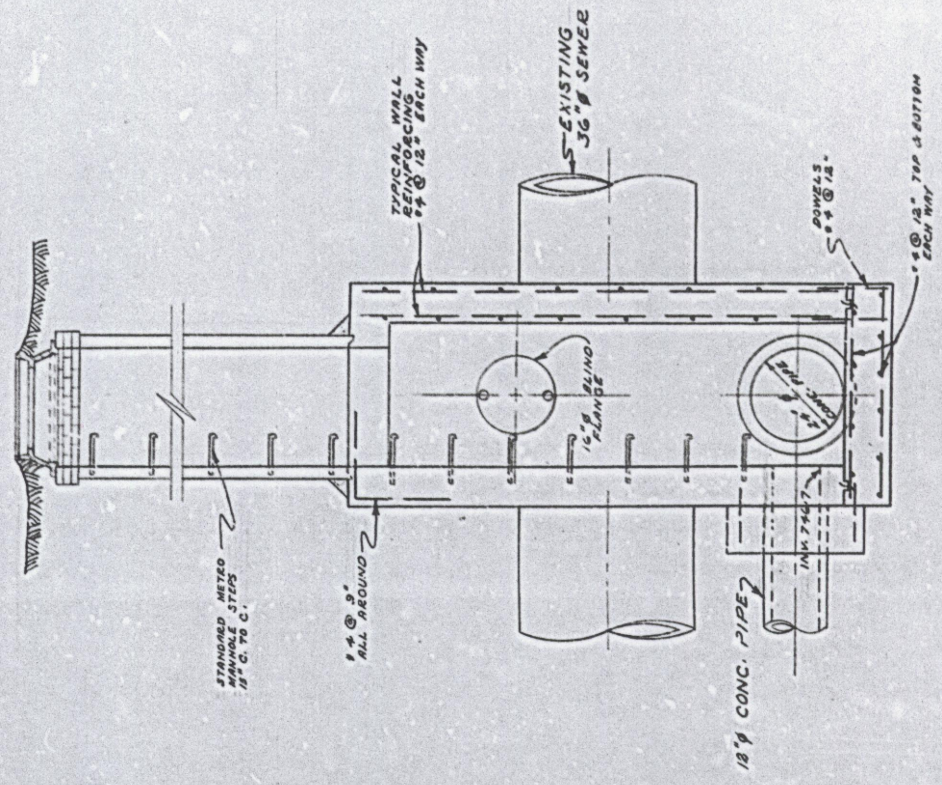
FLOOR PLAN



ROOF PLAN

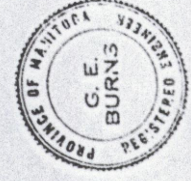


SECTION A-A



SECTION B-B

AS BUILT
MAR. 1971 MD



REVISIONS		NO.	DESCRIPTION	DATE	BY
1					
2					
3					
4					
5					
6					
7					
8					

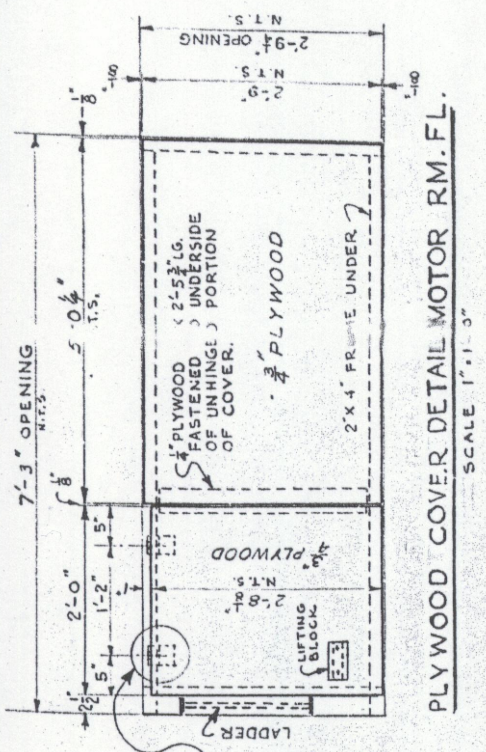
THE METROPOLITAN CORPORATION OF GREATER WINNIPEG
WATERWORKS & WASTE DISPOSAL DIVISION
SCHEWEE DISPOSAL DIVISION

ST. JAMES INTERCEPTOR
STRATHMILLAN JUNCTION
CHAMBER AT STA. 2+10

DESIGNED BY: M.S. [Signature]
DRAWN BY: M.S. [Signature]
CHECKED BY: M.S. [Signature]
DATE: [Blank]
SCALE: 1" = 1'-0" FULL

APPROVED BY: [Signature]
CHIEF ENGINEER

DRAWING NO. 442



PLYWOOD COVER DETAIL MOTOR RM. FL.
SCALE 1"=1'-3"

- 1. NOT GALVANIZE ALL MISCELLANEOUS IRON WORKS
- 2. SEE DWG. 441 FOR LOCATION PLAN

AS BUILT
MAY, 1971 Y.O.



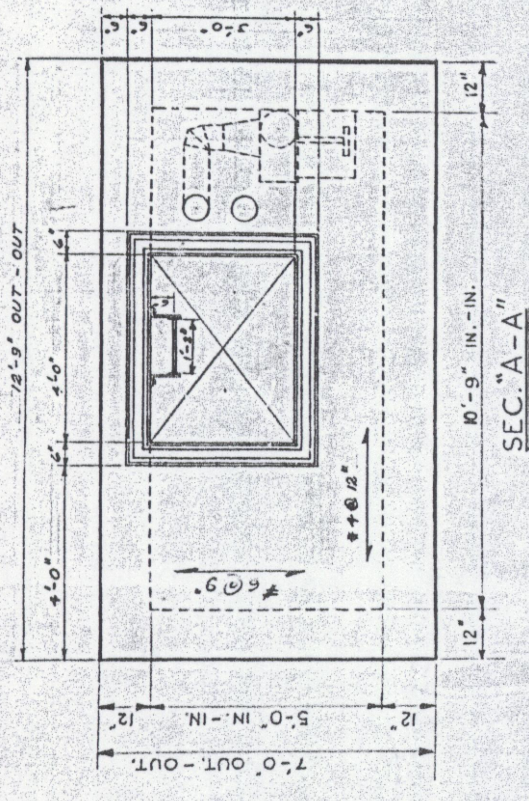
THE METROPOLITAN CORPORATION OF GREATER WINNIPEG
WATERWORKS & WASTE DISPOSAL DIVISION
SEWAGE DISPOSAL BRANCH

ST. JAMES INTERCEPTOR
STRATHMILLAN COMMUNICATOR
CHAMBER

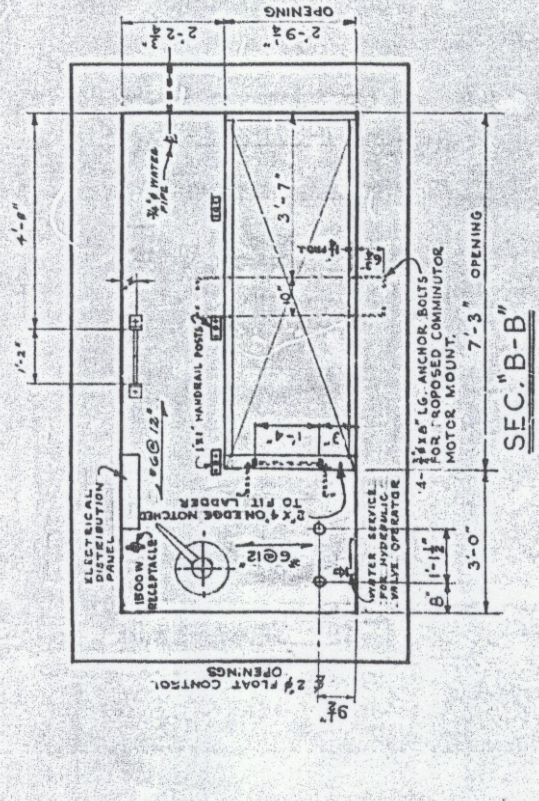
NO.	REVISIONS	DATE	BY
1			
2			
3			
4			
5			
6			
7			
8			

DESIGNED BY: [Signature]
CHECKED BY: [Signature]
SCALE: 1"=1'-0"

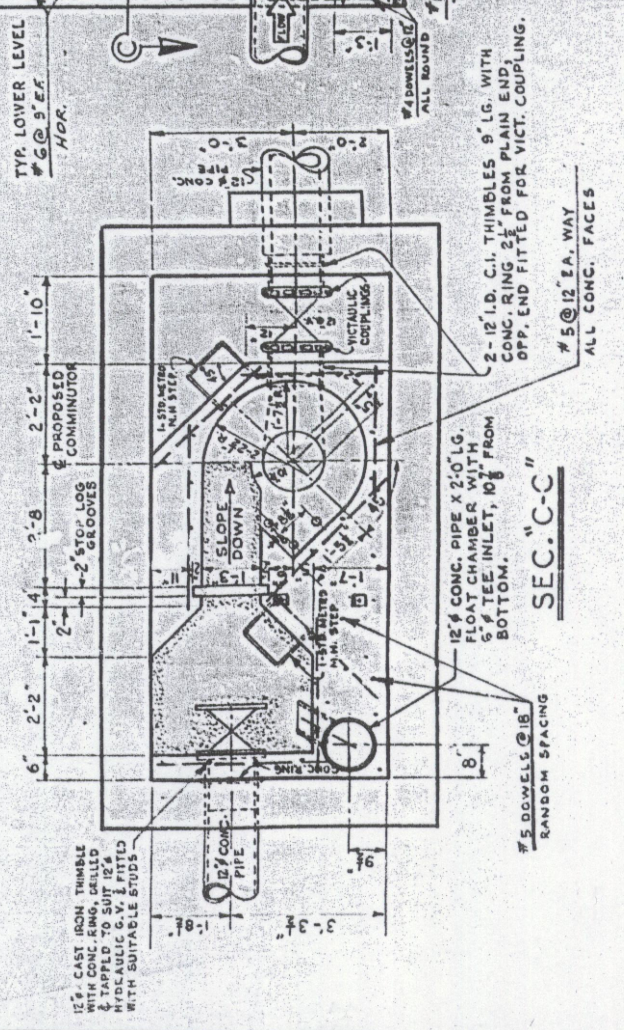
DRAWING NO. 446



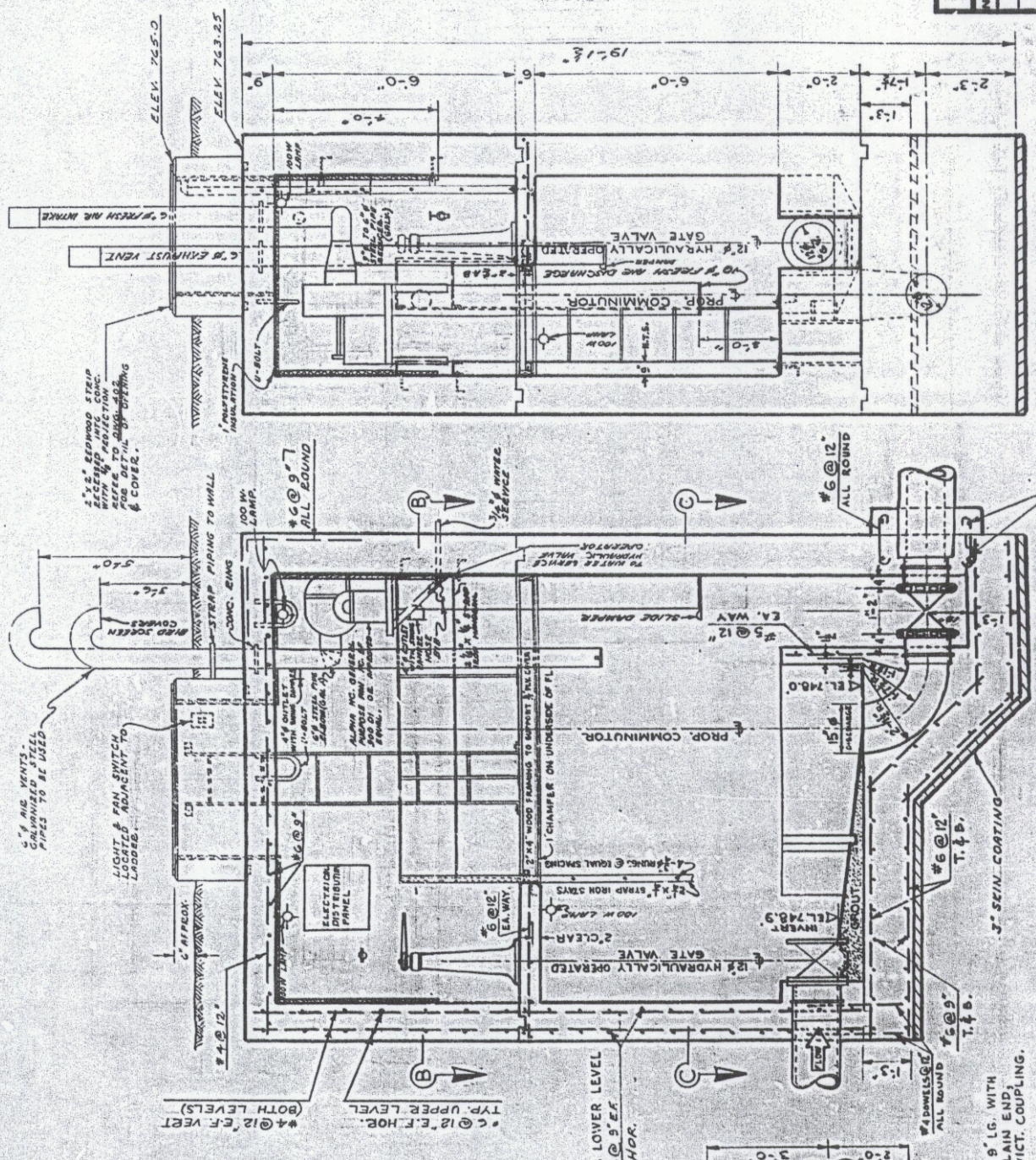
SEC. "A-A"



SEC. "B-B"



SEC. "C-C"



LONGITUDINAL SEC.

CROSS SEC.