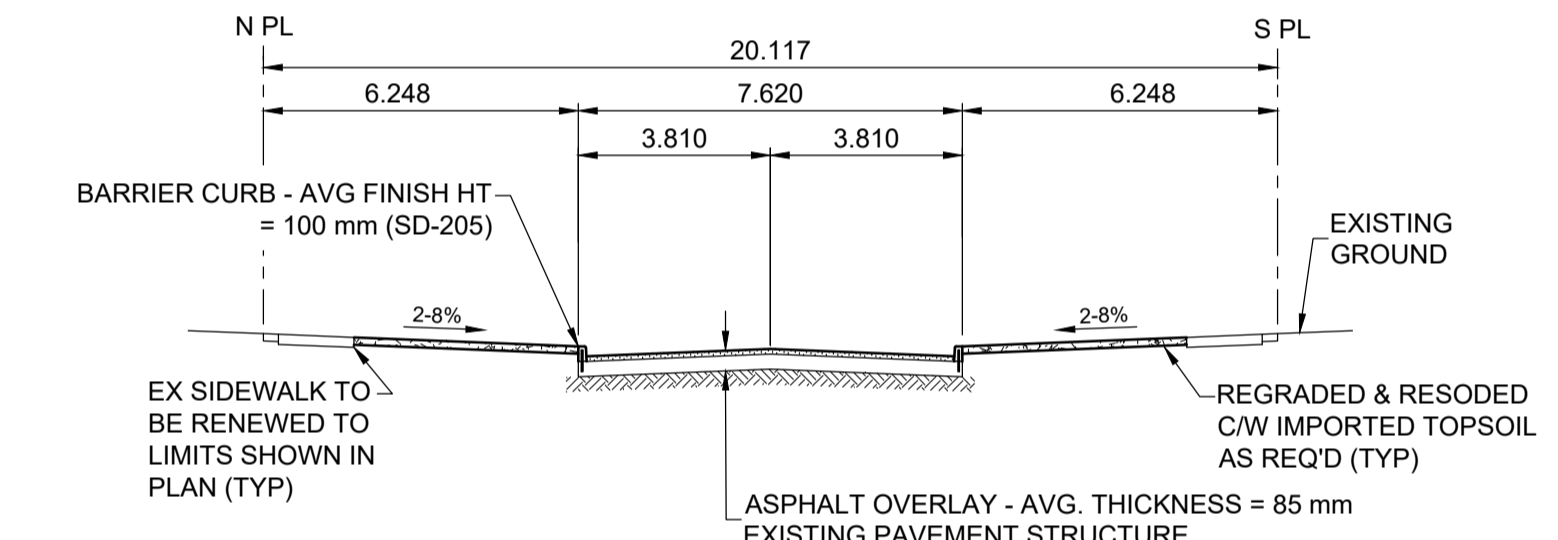
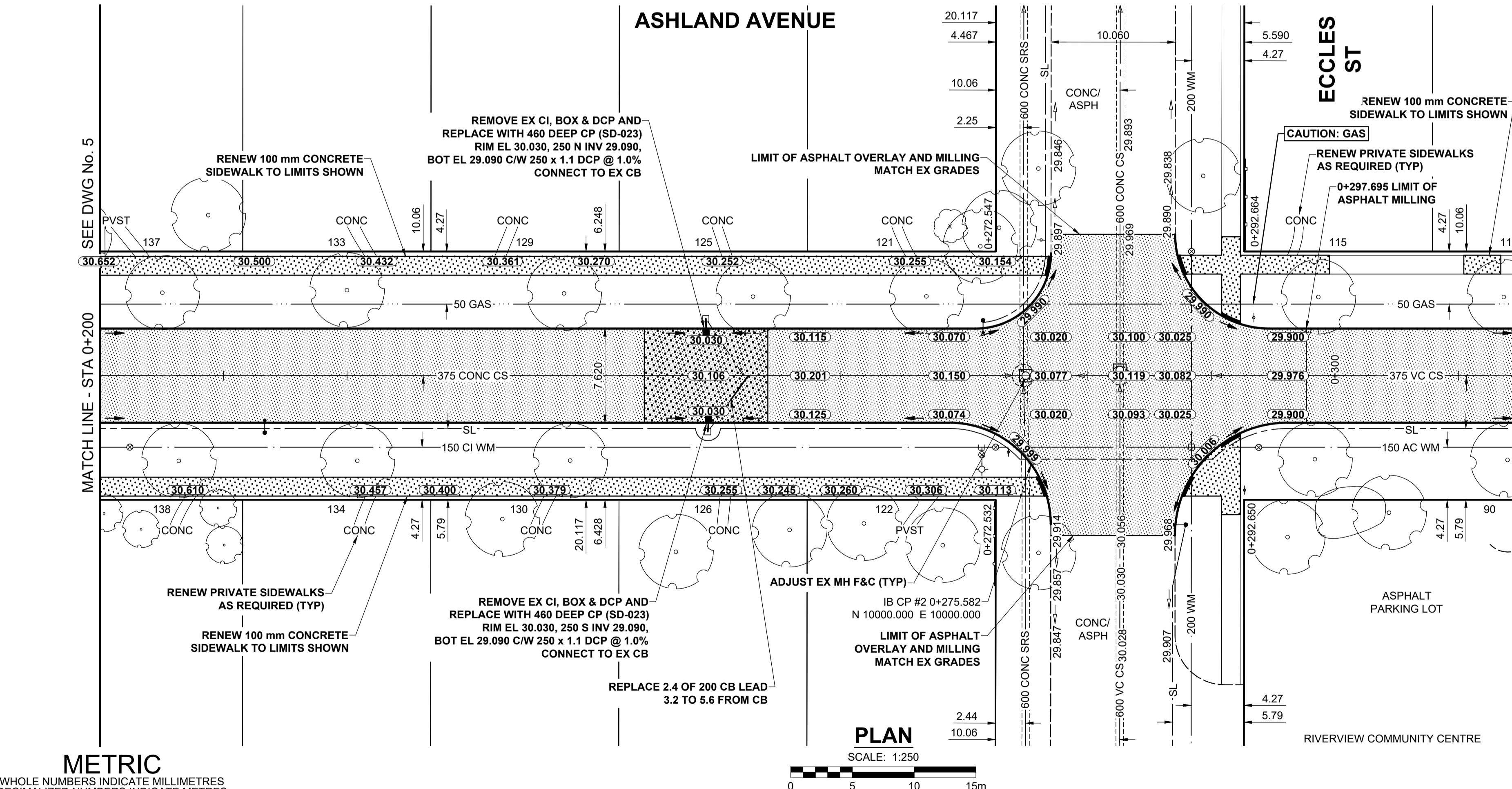
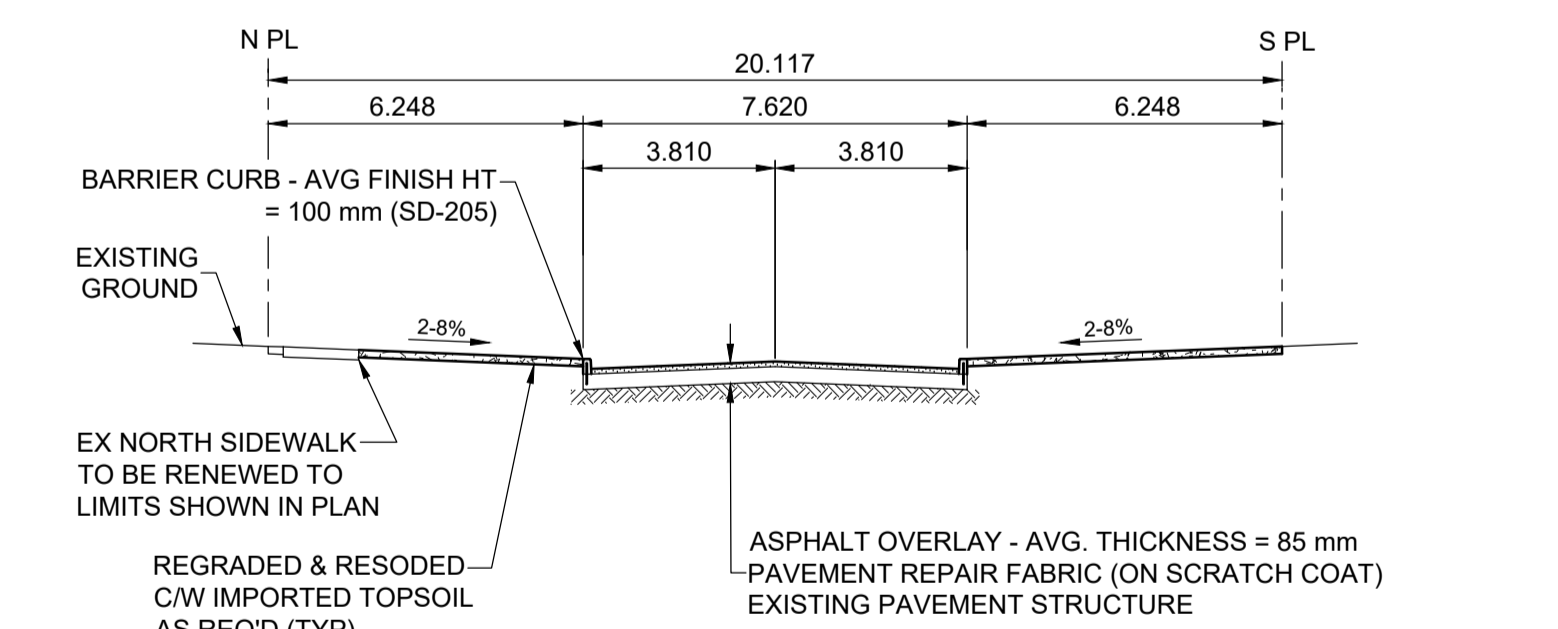


- NOTES**
- ADJUST MH AND CB RIMS TO NEW GRADES.
 - LAMP STANDARDS, HYDRO POLES, AND ANCHORS THAT REQUIRE TEMPORARY SUPPORT, REMOVAL OR REPLACEMENT, TO BE DONE SO AT THE EXPENSE OF THE CONTRACTOR AS NECESSARY.
 - CONTRACTOR TO REGRADE/RENEW EXISTING PRIVATE SIDEWALKS TO LIMITS AS SHOWN. SIDEWALKS TO BE RENEWED WITH CONCRETE UNLESS NOTED OTHERWISE.
 - CONTRACTOR TO TAKE PRECAUTIONARY STEPS TO PROTECT EXISTING TREES WITHIN THE LIMITS OF CONSTRUCTION FROM DAMAGE FROM CONSTRUCTION ACTIVITIES AS OUTLINED IN THE SPECIFICATIONS.
 - CONTRACTOR TO CONFIRM THE LOCATION OF ALL UTILITIES/SERVICES IN THE FIELD PRIOR TO CONSTRUCTION.
 - MODIFIED BARRIER CURB TO BE USED AT ALL INTERSECTION RADII, BACK LANE RADII AND BULLNOSES.
 - CONTRACTOR TO OVERLAY DRIVEWAYS TO ENSURE POSITIVE DRAINAGE TO NEW STREET GRADES. FINAL LIMITS TO BE DETERMINED IN THE FIELD BY CONTRACT ADMINISTRATOR.
 - CB SD-023 & SD-024 OFFSETS ARE DIMENSIONED TO BOC. CB SD-025 OFFSETS ARE DIMENSIONED O/C.
 - REFER TO TENDER FOR DETAILS REGARDING TRAFFIC MANAGEMENT.
 - ADD 200.000 m TO ABBREVIATED ELEVATIONS TO OBTAIN GEODETIC ELEVATIONS.



TYPICAL PAVEMENT SECTION
ASPHALT REHABILITATION
(MABEL ST TO ECCLES ST)
SCALE: NTS



TYPICAL PAVEMENT SECTION
ASPHALT OVERLAY
(ECCLES ST TO DARLING ST)
SCALE: NTS

METRIC
WHOLE NUMBERS INDICATE MILLIMETRES
DECIMALIZED NUMBERS INDICATE METRES

---	GAS	○	MANHOLE	●	CONCRETE PAVEMENT	□	LOCATION APPROVED UNDERGROUND STRUCTURES
---○---	MTS HANDWELL/PEDESTAL	□	CATCH BASIN/CATCH PIT	■	CONC SIDEWALK/MEDIAN	▨	DATE
---○---	HYDRO HANDWELL/CABINET	△	CURB INLET WITH BOX	▲	ASPHALT PAVEMENT	▨	DATE
---	CATV/FIBRE OPTIC	○	TREE	○	PAVING STONE	▨	DATE
---	TRAFFIC SIGNALS/PIT	⊕	TH-12 TEST HOLE	○	GRAVEL	▨	DATE
---	LAND DRAINAGE SEWER	---	PROPERTY LINE	---	RAMP CURB	▨	DATE
---	SANITARY/COMBINED SEWER	---	SURVEY BAR	---	PLANING/REMOVAL	▨	DATE
---	CB LEAD/SSP/DCP	---	FENCE	---			
---	WATERMAIN	---	BOC/EDGE OF PAVEMENT	---			
---	SUBDRAIN	---	ELEVATION (33.333)	---			
---	DITCH	---	TRAFFIC SIGN	---			
---	EXISTING	---	LEGEND - PLAN	---	EXISTING	---	LEGEND - PLAN
---	NEW	---	LEGEND - PLAN	---	NEW	---	LEGEND - PLAN

LOCATION APPROVED UNDERGROUND STRUCTURES

DATE

NOTE: LOCATION OF UNDERGROUND STRUCTURES AS SHOWN ARE BASED ON THE BEST INFORMATION AVAILABLE BUT NO GUARANTEE IS GIVEN THAT ALL EXISTING UTILITIES ARE SHOWN OR THAT THE GIVEN LOCATIONS ARE EXACT. CONFIRMATION OF EXISTENCE AND EXACT LOCATION OF ALL SERVICES MUST BE OBTAINED FROM THE INDIVIDUAL UTILITIES BEFORE PROCEEDING WITH CONSTRUCTION.

B	ISSUED FOR TENDER	20/04/20	RPB	HOR SCALE	1:250
A	ISSUED FOR REVIEW	20/03/13	RPB	VERT SCALE	1:10
No.	REVISIONS	Y/M/MDD	BY	DATE	20/03/13

MORRISON HERSHFIELD

DESIGNED BY: RPB
DRAWN BY: DML

CHECKED BY: JGK
APPROVED BY: BWB

RELEASED FOR CONSTRUCTION

CONSULTANT FILE NAME: 1905658-Ashland-PP-02.dwg

PRELIMINARY DRAWING

NOT TO BE USED FOR CONSTRUCTION

THE CITY OF WINNIPEG
PUBLIC WORKS DEPARTMENT
ENGINEERING DIVISION

2020 LOCAL STREET RENEWAL PROGRAM
ASHLAND AVENUE
MABEL ST TO CHURCHILL DR
ASPHALT RECONSTRUCTION & REHABILITATION
PAVING AND GRADING
STA 0+200 TO STA 0+315

CITY DRAWING NUMBER: N/A
SHEET 6 OF 20
DRAWING NUMBER: 6

TENDER No. 19-2020

ENGINEERS GEOSCIENTISTS MANITOBA
Certificate of Authorization
MORRISON HERSHFIELD
No. 1736