

NOTES:

CONSTRUCTION STANDARDS
TO BE CONSTRUCTED IN ACCORDANCE WITH MANITOBA HYDRO DISTRIBUTION AND SUBTRANSMISSION STANDARDS. LATEST REVISION. NO MAJOR CHANGE SHALL BE MADE WITHOUT APPROVAL OF THE DESIGN ENGINEER OR DELEGATE.
SITE GRADING
THE DEVELOPER IS RESPONSIBLE FOR GRADING OF THE SITE TO WITHIN +10.15M OF FINISHED GRADE PRIOR TO CONSTRUCTION COMMENCEMENT. BENCHMARKS ARE TO BE OBTAINED FROM THE DEVELOPER OR CONSULTANT.

INSTALL ALL STREET LIGHT CONDUCTORS IN 50mm CONDUITS

INSTALL GROUND ROD'S AS PER CD 50-5

LOCK OUT, TAG OUT AND FINAL CONNECTION PERFORMED BY MANITOBA HYDRO

CONTRACTOR SHALL THEN INSTALL TEMPORARY #6 DUPLEX OVERHEAD CONDUCTORS TO MAINTAIN LIGHTING DURING CONSTRUCTION WITH MH DOING FINAL CONNECTION

AT THE END OF CONSTRUCTION TEMPORARY OVERHEAD CABLE SHALL BE DISCONNECTED BY MH AND SALVAGED BY CONTRACTOR

LOCATION	LUMINAIRE	TYPE	QUANTITY	AV. HEIGHT (M)	AV. SPACING (M)	MAX. SPACING (M)
LYNDALE DRIVE EASTBOUND	90W LED	III	107M	6.2	1.55	2.5
LYNDALE DRIVE WESTBOUND	90W LED	III	107M	4	2.0	3.5

REEL NUMBER	MANUFACTURER	MANUFACTURE DATE

AUTHORITY	NOTIFIED	NOT REQ'D	OBTAINED
DISTRICT	11/13/2020		
C/O W. MUNICIPAL	11/13/2020		
M.T.S.		X	
GAS		X	
SHAW		X	
EASEMENTS		X	
COMMUNICATIONS		X	
S.C.C.		X	
DEPT. OF HIGHWAYS		X	

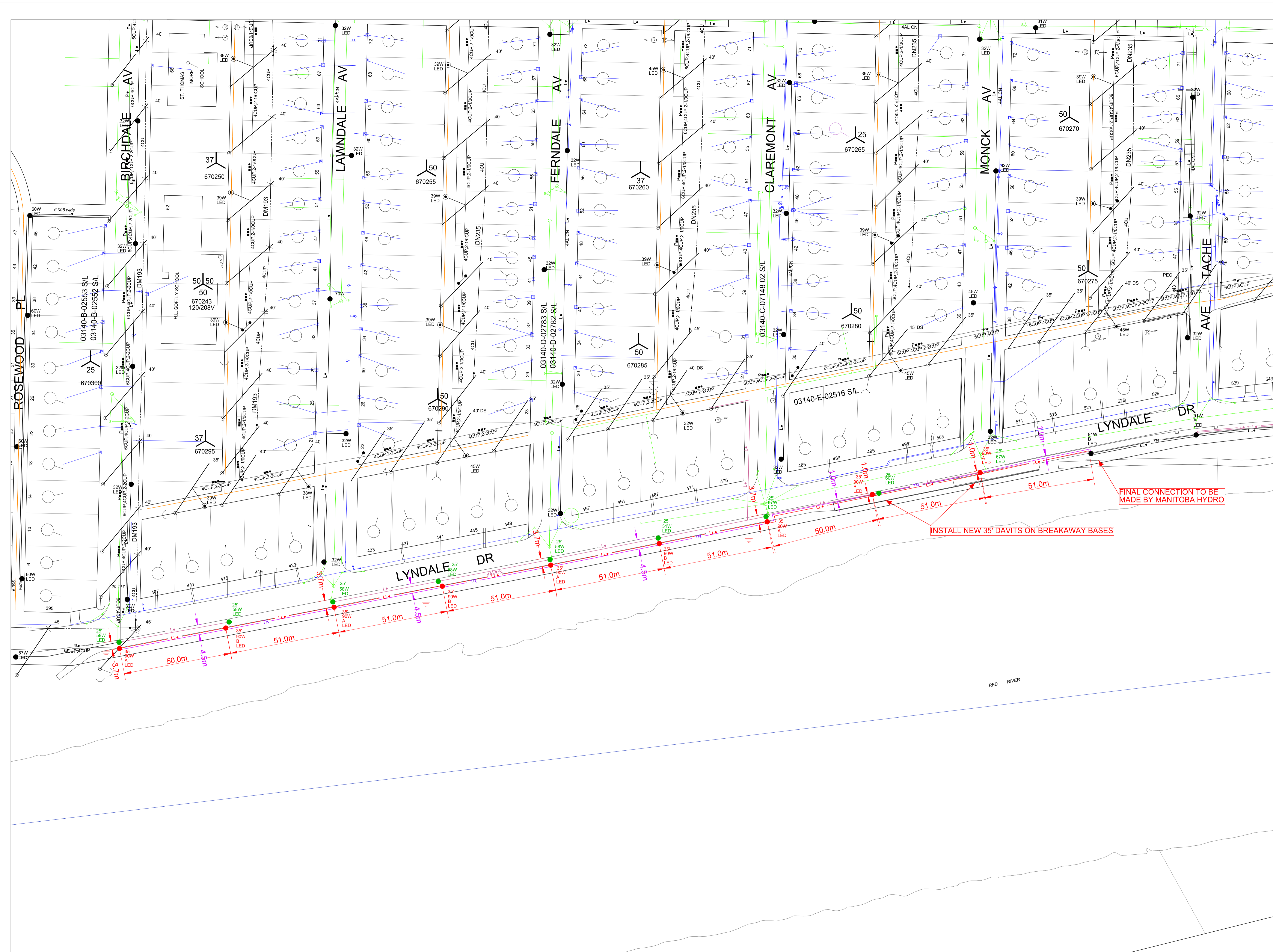
CONTACT	NAME	PHONE NUMBER	EMAIL ADDRESS
DESIGN	TOM HUMBLE	360-4569	THUMBLE@HYDRO.MB.CA
DESIGN ENGINEER	MATT SINGER	360-3201	MSINGER@HYDRO.MB.CA
PORTFOLIO PM	DARIN WACH	360-3082	DWACH@HYDRO.MB.CA
ENERGY SERVICE ADVISOR	TIM LOEB	360-5157	TLOEB@HYDRO.MB.CA
UG CONSTRUCTION	JASON WITT	360-5794	JWITT@HYDRO.MB.CA
OH CONSTRUCTION	WAYNE IRELAND	771-5212	WIRELAND@HYDRO.MB.CA
HYDRO GAS			
SHAW			
MIS			
CUSTOMER REPRESENTATIVE	MENDALL THIESSEN	360-3073	MTHIESSEN@WINNPEG.CA
DISTRICT ENG TECH	PHIL BRUCE	360-3073	PBRUCE@HYDRO.MB.CA

INSTALLED			
Quantity	Fixture Type	Wattage	Pole Type
9	LED	90W	EXCLUSIVE

REMOVED			
Quantity	Fixture Type	Wattage	Pole Type
9	LED	90W	EXCLUSIVE

MACINTA	PROPOSED TRENCH
RED	PROPOSED OBJECT
PINK	OBJECT TO BE ABANDONED
GREEN	OBJECT TO BE SALVAGED
BLACK	EXISTING OBJECT
LL ANNOTATION	1 - #6 AL CU STREET LIGHTING CABLE
LL ANNOTATION	1 - 1/2" TRIPLEX STREET LIGHTING CABLE

INFORMATION PERTAINING TO THE SIZE, TYPE AND LOCATION OF MANITOBA HYDRO FACILITIES AND INSTALLATIONS IS ILLUSTRATIVE AND SHOULD NOT BE RELIED ON FOR THE PURPOSES OF ANY ACTIVITY BEING CONDUCTED AT OR NEAR THE IDENTIFIED HYDRO INSTALLATIONS. ALL LOCATIONS AND EQUIPMENT MUST BE VERIFIED BY APPROPRIATE HYDRO DISTRICT OFFICES PRIOR TO ANY PHYSICAL ACTIVITY BEING UNDERTAKEN AT OR NEAR HYDRO INSTALLATIONS.



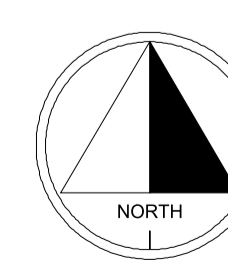
FINAL CONNECTION TO BE MADE BY MANITOBA HYDRO

INSTALL NEW 35' DAVITS ON BREAKAWAY BASES

CONTACT "CLICK BEFORE YOU DIG MANITOBA" AT
ClickBeforeYouDigMB.com
THREE FULL WORKING DAYS
PRIOR TO CONSTRUCTION FOR LOCATION OF EXISTING WATER, WASTEWATER, LAND DRAINAGE UTILITIES AND MANITOBA HYDRO UTILITIES

PRELIMINARY NOT TO BE USED FOR CONSTRUCTION

THIS IS A PRINT OF A DOCUMENT THAT HAS BEEN ELECTRONICALLY AUTHENTICATED WITH TECHNOLOGY AUTHORIZED BY THE EGM. THE ORIGINAL IS IN ELECTRONIC FORM.



DRAWING NUMBER	REFERENCE DRAWINGS
	CITY OF WINNIPEG APPROVALS

NO.	DATE	REVISIONS	BY	CHKD.	APP.

AREA NUMBER	MANITOBA HYDRO
5401	DISTRIBUTION PLANNING & DESIGN
STATION NUMBER	WO# P34632 NETWORK # 4306702
FEEDER NUMBER	DN235
DISTRICT	ST. BONIFACE
PROJECT	STREET LIGHT PROJECT
LYNDALE PATHWAY	
SYSTEM VOLTAGE	REMOVE 9 - 25' DAVITS AND INSTALL 9 NEW 35' DAVITS BEHIND PROPOSED NEW PATHWAY
SCALE	2.4/4.16KV
DATE	11/12/2020
	1-04707-DE-50000-0536