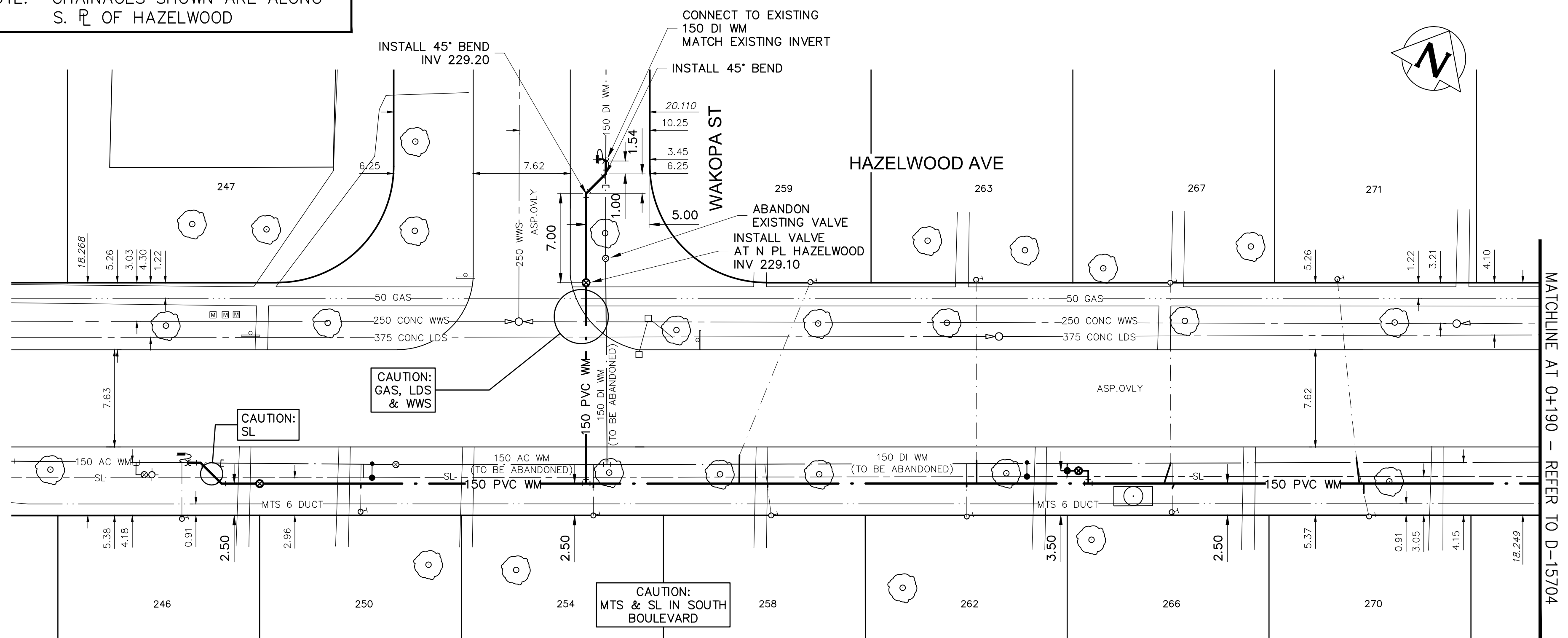


NOTE: CHAINAGES SHOWN ARE ALONG S. R. OF HAZELWOOD



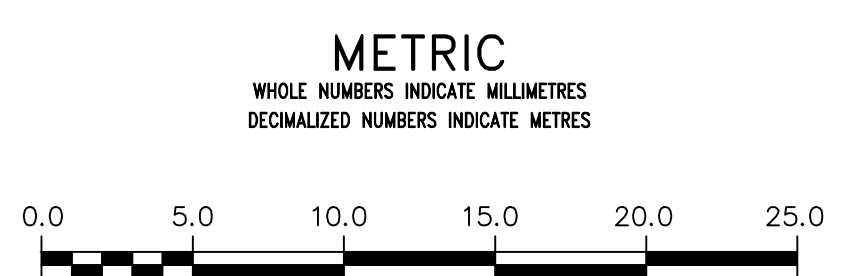
**WATER SERVICE INFORMATION**

ADDRESS	SIZE (mm) MATERIAL (STREET)	SIZE (mm) MATERIAL (PROP.)	SHORT & LONG MEASUREMENT	CORP. LOCATION	REMARKS
246 HAZELWOOD AVE	20 mm	20 mm CU	4.3 m W E BL		NIC
247 HAZELWOOD AVE	25 mm	25 mm CU	0.3 m S N BL		SERVICED OFF WAKOPA NIC
250 HAZELWOOD AVE	20 mm	20 mm CU	4.6 m W E BL		RECONNECT
254 HAZELWOOD AVE	20 mm	20 mm CU	4.3 m W E BL		RECONNECT
258 HAZELWOOD AVE	20 mm	20 mm CU	5.8 m W E BL	0.5 m W SC	RECONNECT
259 HAZELWOOD AVE	20 mm	20 mm CU	2.7 m W E BL	0.4 m W SC	RECONNECT
262 HAZELWOOD AVE	20 mm	20 mm CU	7 m W E BL		RECONNECT
263 HAZELWOOD AVE	20 mm	20 mm CU	5.5 m W E BL		RECONNECT
266 HAZELWOOD AVE	20 mm	20 mm CU	7 m E W BL		RECONNECT
267 HAZELWOOD AVE	20 mm	20 mm CU	4.9 m E W BL		RECONNECT
270 HAZELWOOD AVE	20 mm	20 mm CU	6.1 m E W BL		RECONNECT
271 HAZELWOOD AVE	20 mm	20 mm CU	5.2 m E W BL		RECONNECT

\* SERVICES TO BE RENEWED TO R. ALL OTHERS TO BE RECONNECTED

NOTE: LOCATION OF WATER SERVICES SHOWN ON DRAWINGS ARE APPROXIMATE. THE CONTRACTOR SHALL FIELD LOCATE ALL WATER SERVICES PRIOR TO CONSTRUCTION.

ALL VALVES ARE CLOCKWISE TO CLOSE (BLACK OPERATING NUT)



**ENGINEERS GEOSCIENTISTS MANITOBA**  
 Certificate of Authorization  
 AECOM Canada Ltd.  
 No. 4671 Date *April 13/20*

REFER TO DRAWING D-15700 FOR CONSTRUCTION NOTES

**WARNING**  
 IF POWER EQUIPMENT OR EXPLOSIVES ARE TO BE USED FOR EXCAVATION ON THIS PROJECT THE CONTRACTOR MUST:  
 1) NOTIFY THE GAS COMPANY OF THE PROPOSED LOCATION OF EXCAVATION.  
 2) TAKE PRECAUTION TO AVOID DAMAGE TO GAS COMPANY INSTALLATIONS.  
 SEE PROVINCIAL REGULATION 210/72 FOR DETAILS

**LOCATION APPROVED UNDERGROUND STRUCTURES**  
 SUPV. U/G STRUCTURES COMMITTEE DATE  
 NOTE:  
 LOCATION OF UNDERGROUND STRUCTURES AS SHOWN ARE BASED ON THE BEST INFORMATION AVAILABLE BUT NO GUARANTEE IS GIVEN THAT ALL EXISTING UTILITIES ARE SHOWN OR THAT THE GIVEN LOCATIONS ARE EXACT. CONFIRMATION OF EXISTENCE AND EXACT LOCATION OF ALL SERVICES MUST BE OBTAINED FROM THE INDIVIDUAL UTILITIES BEFORE PROCEEDING WITH CONSTRUCTION.

B.M. 27-030 ELEV. 231.587 m	888523 - N.W. Cor. Ashworth St. & Novovista Dr., Tbit. on top of 0.005 m dia. x 2.4 m iron tube 6.2 m S. of N.L. Novovista Dr. & on W.L. of Ashworth St.
DESIGNED BY	JP
CHECKED BY	GSK
DRAWN BY	JP
APPROVED BY	
RELEASED FOR CONSTRUCTION	
DATE	2020/04/03
SCALE:	HORIZONTAL 1:250 VERTICAL 1:50
REVISIONS	
NO.	DATE BY

**AECOM**

DESIGNED BY JP CHECKED BY GSK  
 DRAWN BY JP APPROVED BY  
 RELEASED FOR CONSTRUCTION  
 DATE 2020/04/03

ENGINEER'S SEAL  
 PROVINCE OF MANITOBA  
 K.W. FITCHETT  
 REGISTERED PROFESSIONAL ENGINEER  
 CONSULTANT DRAWING NUMBER  
 C-0003

**THE CITY OF WINNIPEG**  
 WATER AND WASTE DEPARTMENT  
 ENGINEERING DIVISION

2020 WATER MAIN RENEWALS CONTRACT 6

HAZELWOOD AVENUE  
 14m WEST OF WAKOPA STREET TO  
 70m E OF WAKOPA STREET

SHEET 5 OF 13  
 CITY DRAWING NUMBER  
 D-15703