

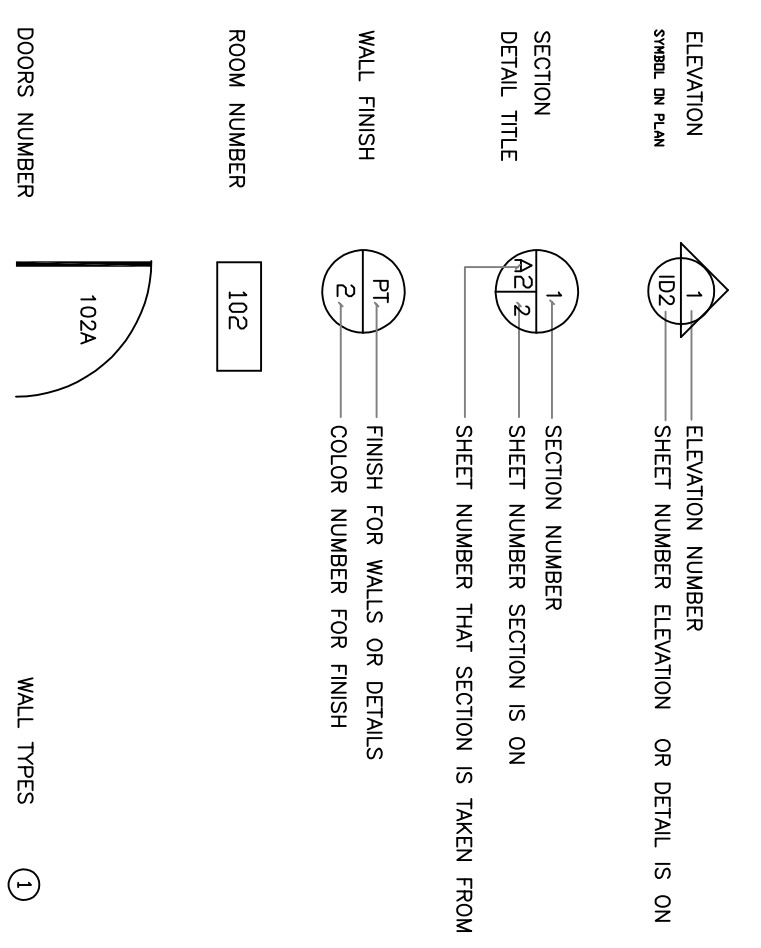
DRAWING INDEX

- INTERIOR DESIGN
 - ID-1R1 SITE PLAN, GENERAL NOTES, WALL TYPES, PLUMBING SPEC.
 - ID-2 DETAIL SECTION
 - ID-3 ELEVATION REFLECTED CEILING PLAN
 - ID-4 FLOOR PLAN
 - ID-5 FURNITURE & ELECTRICAL LAYOUT
 - ID-6R1 REFLECTED CEILING PLAN
 - ID-7 ELEVATIONS & SECTIONS CIRCULATION DESK PLAN
 - ID-8R1 FINISH & ROOM SCHEDULES, MATERIAL LIST
 - ID-9R1 FLOORING FINISH PLAN
- OCCUPANCY TYPE A2 ASSEMBLY 150 PEOPLE
 INTERIOR RENOVATION
 WASHROOM COUNTS INCLUDE 2 FEMALE, 1 MALE, 1 URINALS,
 8,086 SQ.FT.

GENERAL NOTES

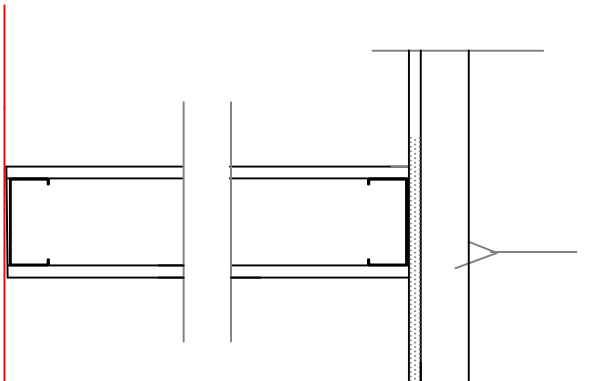
CONTRACTORS AND SUB-CONTRACTORS SHALL VERIFY ALL JOB SITE DIMENSIONS, ALL DRAWINGS, DETAILS, AND SPECIFICATIONS, AND REPORT ANY DISCREPANCIES TO CONTRACTOR ADMINISTRATION.
 CONTRACTORS TO FAMILIARIZE THEMSELVES WITH THE BUILDING REGULATIONS AND ADHERE TO THE REGULATIONS SET FORTH BEFORE PROCEEDING WITH CONSTRUCTION. GENERAL CONTRACTOR TO ENSURE CONTINUOUS MAINTENANCE OF SITE DURING CONSTRUCTION OR PROTECTION OF ALL MATERIALS AND WORK DONE TO DATE.
 FLOORING INSTALLERS TO COORDINATE MOVING OF STICK WITH FLOOR REMOVAL AND INSTALL LIBRARY SERVICES TO BE RESPONSIBLE FOR PROTECTION OF ALL MATERIALS AND WORK DONE TO DATE.
 CONTRACTOR TO REMOVE ALL EXISTING BLINDS AND INSTALL NEW AS REQUIRED AFTER CONSTRUCTION IS COMPLETED.
 LIBRARY SERVICES TO REMOVE ALL EXISTING SIGNAGE & REINSTALL

REFERENCE SYMBOLS



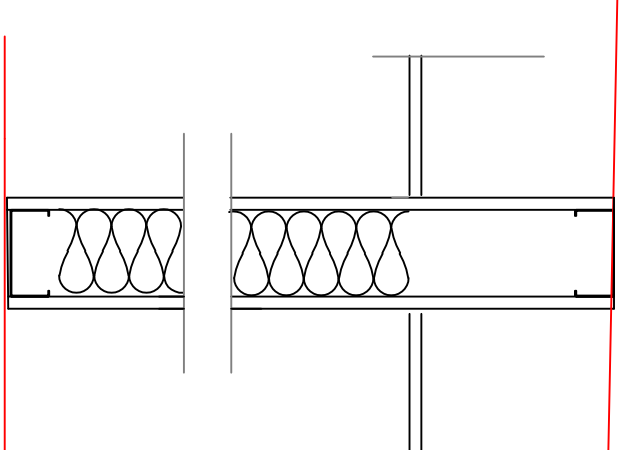
DO NOT SCALE DRAWINGS
 CONTRACTOR SHALL FIELD VERIFY ALL JOB CONDITIONS AND DIMENSIONS. VARIATIONS THEREOF FROM THE DRAWINGS MUST BE REPORTED TO SYNERGY INTERIOR DESIGN INC. ON THE DRAWINGS ARE REPRESENTATIVE AND TYPICAL. ALL ATTACHMENTS AND CONNECTIONS SHALL CONFORM TO BEST PRACTICE AND SHALL BE THE CONTRACTOR'S RESPONSIBILITY.
 THE INTENT OF THE DRAWINGS IS TO INCLUDE ALL MATERIAL, LABOR, EQUIPMENT AND SERVICES FROM THE DRAWINGS AND NOT TO BE RESPONSIBLY IMPLIED.
 ALL ELECTRICAL, MECHANICAL, STRUCTURAL DRAWINGS SHALL BE APPROVED BY THE APPROPRIATE ENGINEERS AND OR QUALIFIED TRADESMEN (AS APPROPRIATE). ENGINEERS SHOULD VERIFY THAT ALL LOCAL, BUILDING, FIRE AND ELECTRICAL CODES, SUBJECT TO THE APPROVAL OF THE INTERPRETATION OF THE ABOVE NOTED CODES.

U.S. EXIST. STRUCTURE



CEILING TILE
 EXTEND WALL TO UNDERSIDE OF CEILING TILES
 3/8" PLY STRAPPING AS NECESSARY
 1/2" G.W.B., TAPED, SANDED,
 PAINTED BOTH SIDES
 3 5/8" STEEL STUD @16" O.C.

U.S. EXIST. STRUCTURE

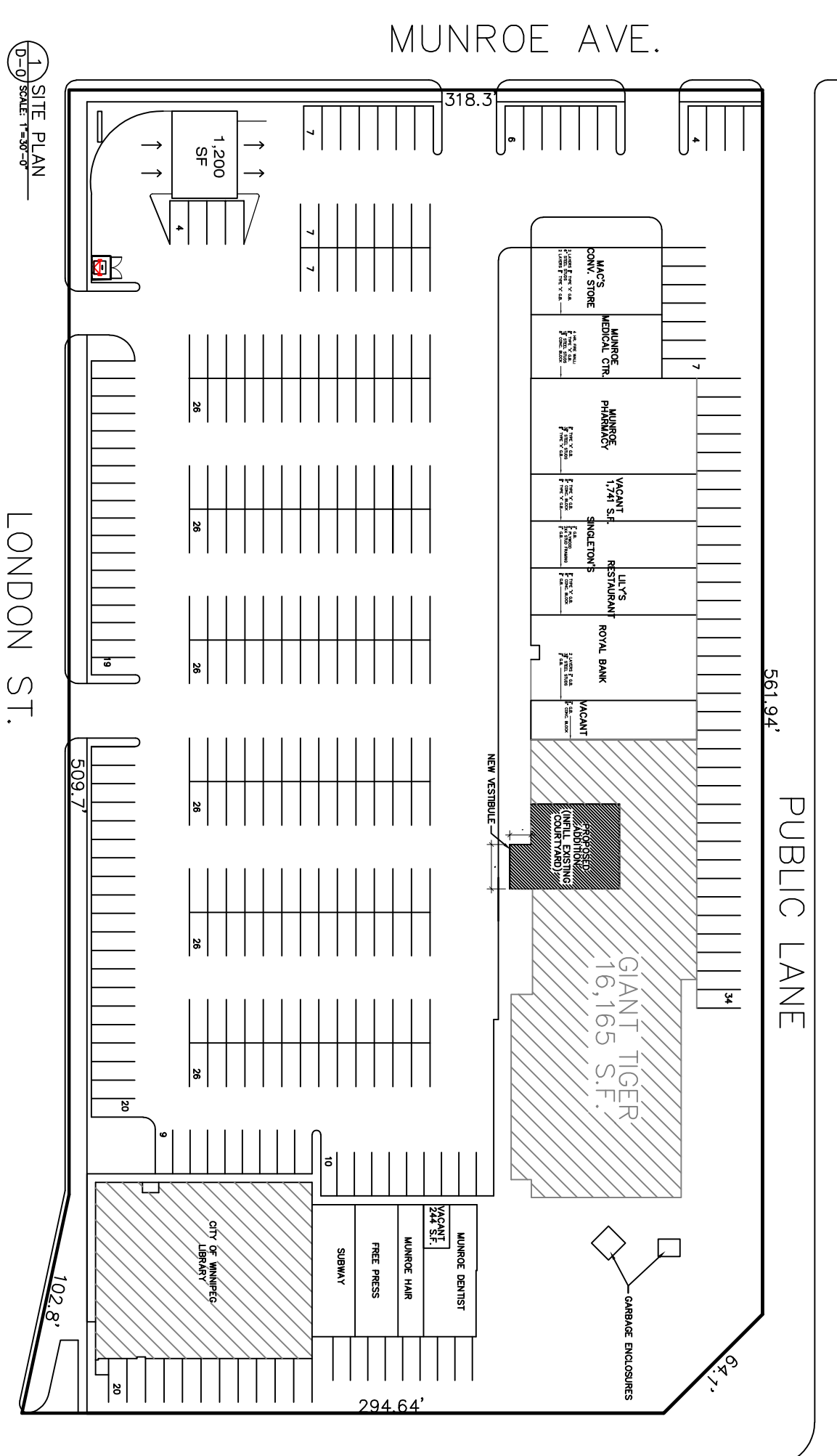


EXTEND WALL TO UNDERSIDE OF EXISTING STRUCTURE
 3/8" PLY STRAPPING AS NECESSARY
 1/2" G.W.B., TAPED, SANDED,
 PAINTED BOTH SIDES
 3/4" STEEL STUD @16" O.C.
 BATT INSULATION TO FILL WALL

WALL TYPE 1

WALL TYPE 3

- EXISTING MEN & WOMEN'S BATHROOM
- 2 ONLY STAINLESS STEEL DROP IN SINK WITH OVER FLOW KOHLER, MODEL #K-2609 SU-NA
 SIZE: 19 1/8" x 16 1/8" x 7 1/8"
- 2 ONLY HANDS FREE FAUCET, HARD WIRED DELTA #:S90-PALGHDF-HW
 TRANSFORMER: #:060704A
 MIXING VALVE #:R3070-MIXLKF



KEY PLAN

TOTAL PARKING - 6'x20'
 310 SPACES @ 9'x20'

SYNERGY INTERIOR DESIGN INC

13 Roseworne, Avenue WINNIPEG, MB Canada R2M 0V8
 204.233.9159
 molivna@synergyinteriors.com
 www.synergyinteriors.com
 DATE MARCH 2020 SCALE AS NOTED REVISIONS
 DRAWN BY M.G. CHECKED BY M.G.
MUNROE BRANCH LIBRARY
489 LONDON STREET, WINNIPEG
 SHEET
INDEX, SITE PLAN, WALL TYPES, PLUMBING SPECS, GENERAL NOTES
 AUTOCAD NUMBER DWG. ID-1R1



NO.	DATE	DESCRIPTION	BY
R1	APRIL 23, 2021	NOTE ON BLIND INSTALLATION	MG
1	DEC 2020	REDUCTION FOR BUDGET	MG

DRAWN BY
 PRINTING DATE
 DRAWINGS & SPECIFICATIONS, AS INSTRUMENTS OF SERVICES ARE THE PROPERTY OF SYNERGY INTERIOR DESIGN INC. THE COPYRIGHT IN THE SAME BEING RESERVED TO THEM. NO REPRODUCTION, MAY BE MADE WITHOUT THE PERMISSION OF SYNERGY INTERIOR DESIGN INC.
 ALL PRINTS TO BE RETURNED.
 THE CONTRACTOR IS TO VERIFY DIMENSIONS & DATA NOTED HEREIN WITH CONDITIONS THE SITE & IS HELD RESPONSIBLE FOR REPORTING ANY DISCREPANCY TO THE DESIGNER FOR ADJUSTMENT.