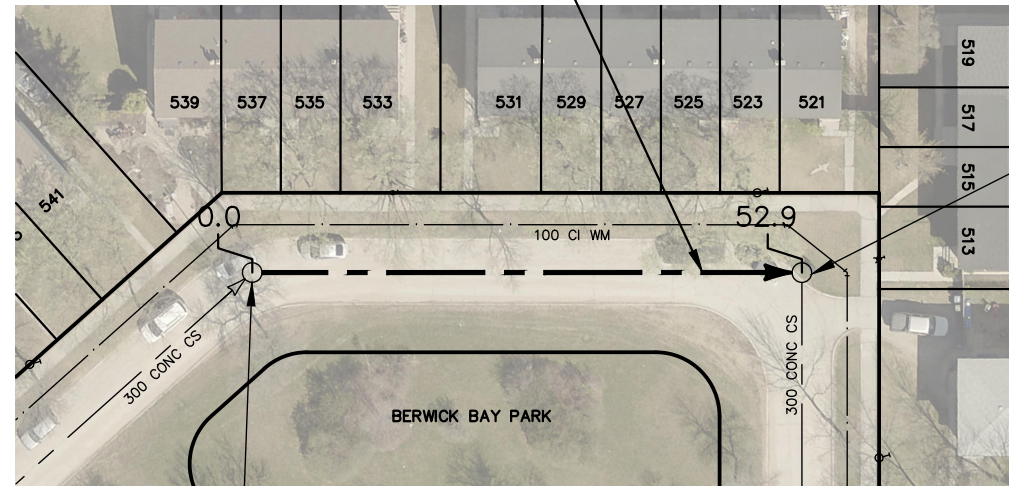


# BERWICK PLACE (N-LEG)

**52.9 OF 300 CS TO BE LINED  
S-MA60012094**



S-MH60010295  
RIM 232.07  
INV S 227.64  
INV W 227.64

S-MH60010293  
RIM 232.13  
INV E 227.90  
INV S 227.90

**BERWICK PL  
(W-LEG)**

**BERWICK PL  
(E-LEG)**

SEWER JUNCTION INFORMATION FROM SEWER VIDEO INSPECTION		
SEWER ID S-MA60012094		
DISTANCE FROM MH ID S-MH60010293		
DISTANCE	DIAMETER	CLOCK
14.4	150	12
49.2	150	10

### WARNING

IF POWER EQUIPMENT OR EXPLOSIVES ARE TO BE USED FOR EXCAVATION ON THIS PROJECT THE CONTRACTOR MUST:

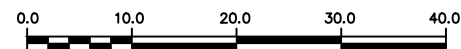
- 1) NOTIFY THE GAS COMPANY OF THE PROPOSED LOCATION OF EXCAVATION.
- 2) TAKE PRECAUTION TO AVOID DAMAGE TO GAS COMPANY INSTALLATIONS.

SEE PROVINCIAL REGULATION 210/72 FOR DETAILS

**FOR INDEX SEE  
12443**

### METRIC

WHOLE NUMBERS INDICATE MILLIMETRES  
DECIMALIZED NUMBERS INDICATE METRES



LOCATION APPROVED  
UNDERGROUND STRUCTURES

B.M.  
ELEV.

SUPV. U/G STRUCTURES COMMITTEE      DATE

NOTE:

LOCATION OF UNDERGROUND STRUCTURES AS SHOWN ARE BASED ON THE BEST INFORMATION AVAILABLE BUT NO GUARANTEE IS GIVEN THAT ALL EXISTING UTILITIES ARE SHOWN OR THAT THE GIVEN LOCATIONS ARE EXACT. CONFIRMATION OF EXISTENCE AND EXACT LOCATION OF ALL SERVICES MUST BE OBTAINED FROM THE INDIVIDUAL UTILITIES BEFORE PROCEEDING WITH CONSTRUCTION.

NO.	REVISIONS	DATE	BY

DESIGNED BY	SC	CHECKED BY	SC
DRAWN BY	RS	APPROVED BY	KZ
SCALE:		RELEASED FOR CONSTRUCTION	
HORIZONTAL	1:750	<b>K. ZUREK</b>	
VERTICAL		DATE	2020-04-22
DATE	2020 04 23	DATE	2020-04-22

ENGINEER'S SEAL

**ORIGINAL  
SIGNED BY  
S.R.J.  
COURNOYER  
2020/04/17**

CONSULTANT DRAWING NUMBER

-



**THE CITY OF WINNIPEG**  
WATER AND WASTE DEPARTMENT  
ENGINEERING DIVISION

2020 SEWER MAIN RENEWALS  
BY CIPP LINING  
**BERWICK PLACE (N-LEG)**  
1ST MH N OF BERWICK PLACE (W-LEG) TO  
1ST MH N OF BERWICK PLACE (E-LEG)

SHEET **11** OF **60**  
CITY DRAWING NUMBER  
**12452**