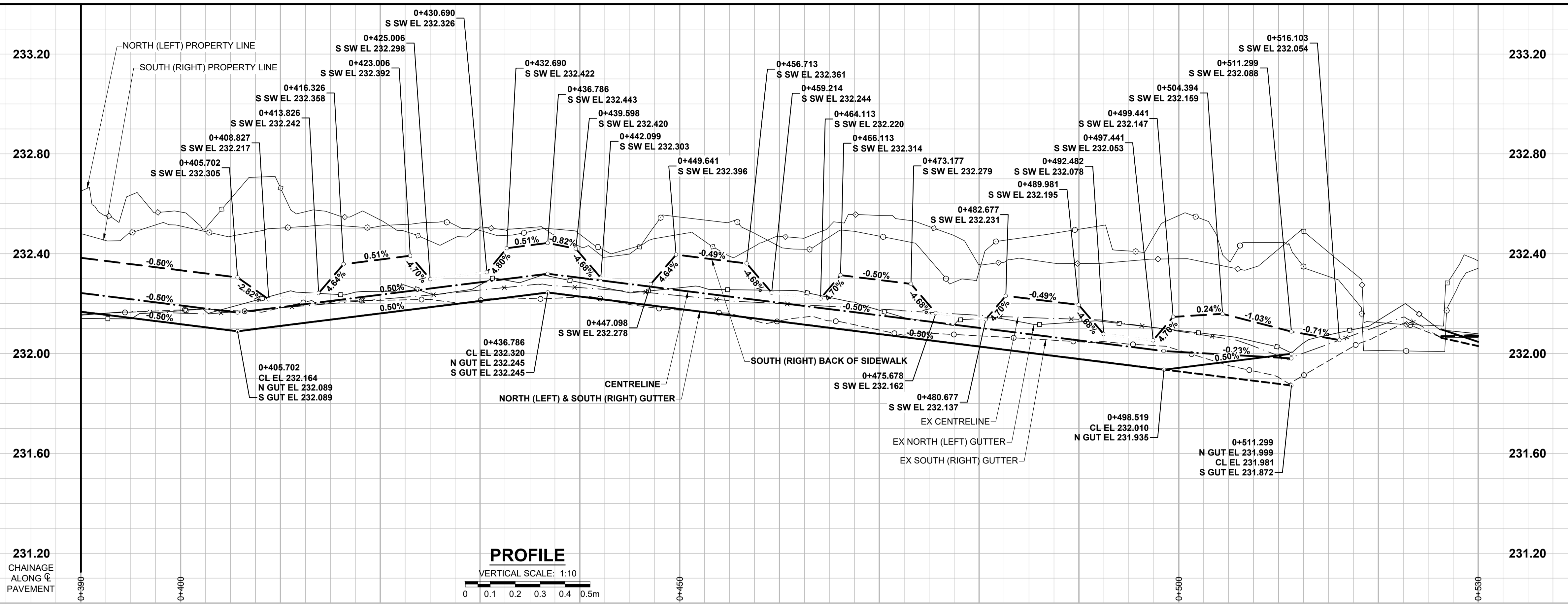
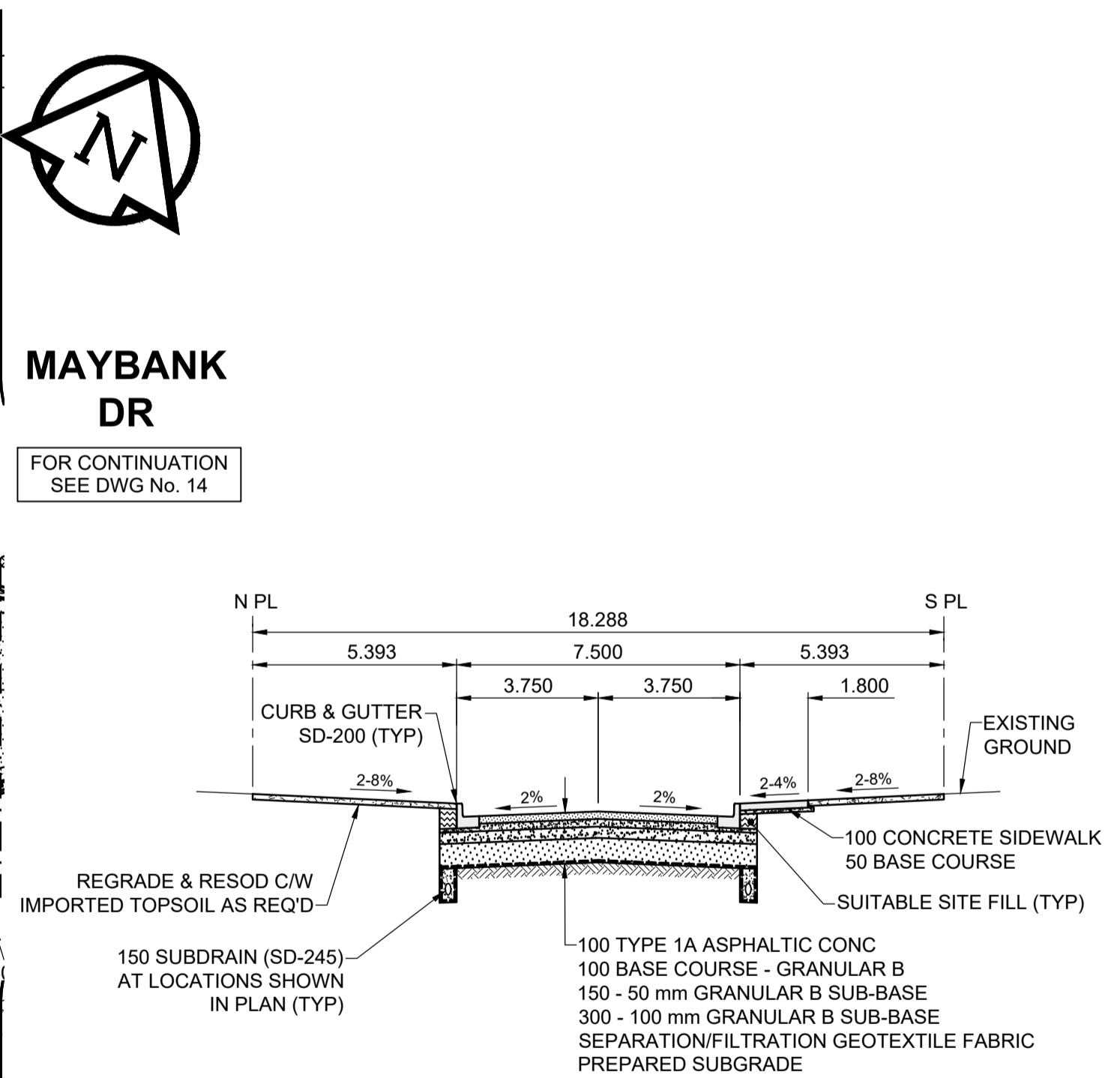
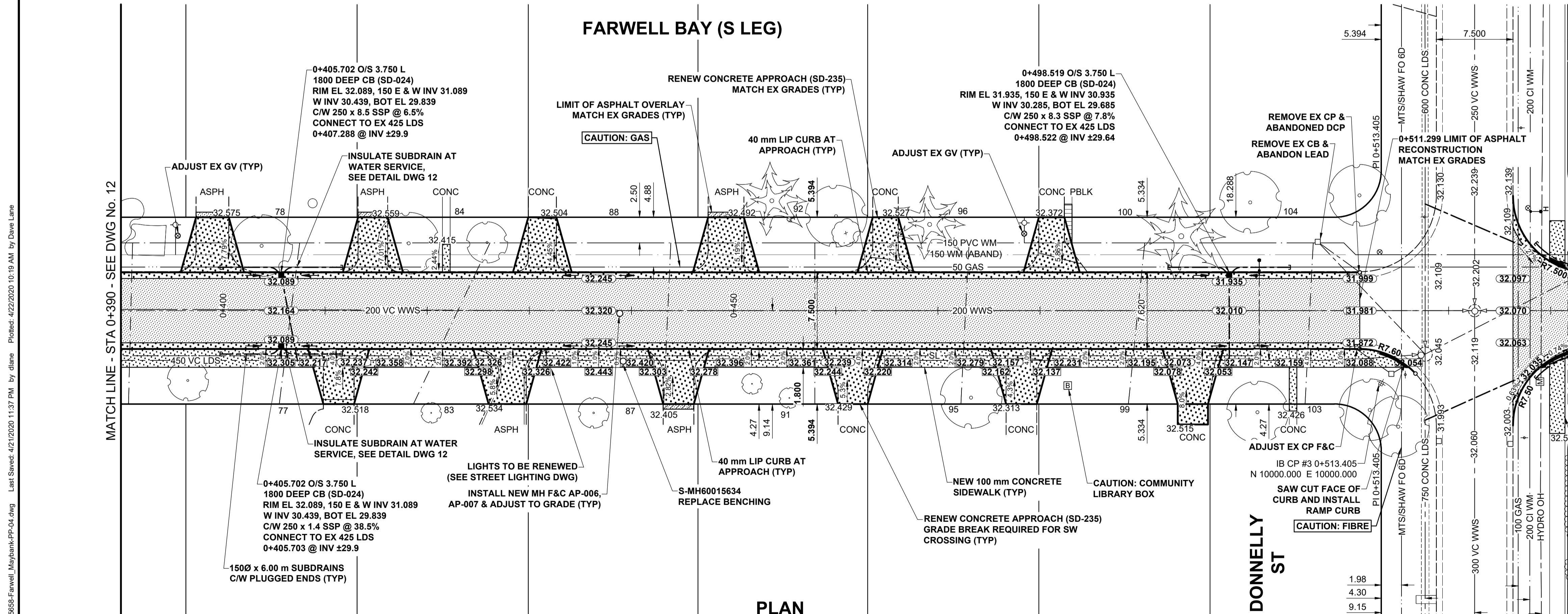


ISO A1 - 594mm x 841mm



- NOTES**
- ADJUST MH AND CB RIMS TO NEW GRADES.
 - LAMP STANDARDS, HYDRO POLES, AND ANCHORS THAT REQUIRE TEMPORARY SUPPORT, REMOVAL OR REPLACEMENT, TO BE DONE SO AT THE EXPENSE OF THE CONTRACTOR AS NECESSARY.
 - CONTRACTOR TO REGRADE/RENEW EXISTING PRIVATE SIDEWALKS TO LIMITS AS SHOWN. SIDEWALKS TO BE RENEWED WITH CONCRETE UNLESS NOTED OTHERWISE.
 - CONTRACTOR TO TAKE PRECAUTIONARY STEPS TO PROTECT EXISTING TREES WITHIN THE LIMITS OF CONSTRUCTION FROM DAMAGE FROM CONSTRUCTION ACTIVITIES AS OUTLINED IN THE SPECIFICATIONS.
 - CONTRACTOR TO CONFIRM THE LOCATION OF ALL UTILITIES/SERVICES IN THE FIELD PRIOR TO CONSTRUCTION.
 - CB SD-023 & SD-024 OFFSETS ARE DIMENSIONED TO BOC. CB SD-025 OFFSETS ARE DIMENSIONED OIC.
 - IN GENERAL, PAVEMENT AND SIDEWALK AREAS TO BE REMOVED. MATCH RECONSTRUCTION LIMITS.
 - REFER TO TENDER FOR DETAILS REGARDING TRAFFIC MANAGEMENT.
 - EXISTING LONG WATER SERVICES TO BE INSULATED (SD-018). REFER TO TENDER FOR FURTHER REQUIREMENTS AND AS NOTED IN PLAN.
 - ALL COSTS, MATERIALS AND LABOR ASSOCIATED WITH THE RESTORATION OF THE CATHODIC PROTECTED WATERMAIN WILL BE RESPONSIBILITY OF THE CONTRACTOR.
 - MODIFIED BARRIER CURB TO BE USED AT ALL INTERSECTION RADII.
 - ADJUST EXISTING WATER VALVES AND WATER SERVICE CURB STOPS TO GRADE.
 - ADD 200.000 m TO ABBREVIATED ELEVATIONS TO OBTAIN GEODETIC ELEVATIONS.



METRIC
WHOLE NUMBERS INDICATE MILLIMETRES
DECIMALIZED NUMBERS INDICATE METRES

---	GAS	○	MANHOLE	●	CONCRETE PAVEMENT	LOCATION APPROVED	
---	MTS HANDWELL/PEDESTAL	□	CATCH BASIN/CATCH PIT	■	CONC SIDEWALK/MEDIAN	UNDERGROUND STRUCTURES	
---	HYDRO HANDWELL/CABINET	△	CURB INLET WITH BOX	▲	ASPHALT PAVEMENT		
---	CATV/FIBRE OPTIC	○	TREE	▲	PAVING STONE		
---	TRAFFIC SIGNALS/PIT	⊕	TEST HOLE	▲	GRAVEL		
---	LAND DRAINAGE SEWER	⊕	PROPERTY LINE	▲	RAMP CURB		
---	SANITARY/COMBINED SEWER	⊕	SURVEY BAR	▲	PLANING/REMOVAL		
---	CB LEAD/SSP/DCP	⊕	FENCE	▲			
---	WATERMAIN	⊕	BOC/EDGE OF PAVEMENT	▲			
---	SUBDRAIN	⊕	ELEVATION	▲			
---	DITCH	⊕	TRAFFIC SIGN	▲			
---	EXISTING	---	LEGEND - PLAN	---	LEGEND - PLAN	---	NEW

LOCATION APPROVED
UNDERGROUND STRUCTURES

DATE

NOTE:
LOCATION OF UNDERGROUND STRUCTURES AS SHOWN ARE BASED ON THE BEST INFORMATION AVAILABLE BUT NO GUARANTEE IS GIVEN THAT ALL EXISTING UTILITIES ARE SHOWN OR THAT THE GIVEN LOCATIONS ARE EXACT. CONFIRMATION OF EXISTENCE AND EXACT LOCATION OF ALL SERVICES MUST BE OBTAINED FROM THE INDIVIDUAL UTILITIES BEFORE PROCEEDING WITH CONSTRUCTION.

B	ISSUED FOR TENDER	20/04/20	GFC		
A	ISSUED FOR REVIEW	20/03/13	GFC		
No.	REVISIONS	Y/M/MDD	BY	DATE	20/03/13

PROFESSIONAL'S SEAL

PRELIMINARY DRAWING

NOT TO BE USED FOR CONSTRUCTION

CONSULTANT FILE NAME
1905658-Farwell_Maybank-PP-04.dwg

THE CITY OF WINNIPEG
PUBLIC WORKS DEPARTMENT
ENGINEERING DIVISION

2020 LOCAL STREET RENEWAL PROGRAM
FARWELL BAY (S LEG)
DONNELLY ST TO DONNELLY ST
ASPHALT RECONSTRUCTION
PAVING AND GRADING
STA 0+390 TO DONNELLY ST

CITY DRAWING NUMBER: N/A
SHEET OF: 13 OF 20
DRAWING NUMBER: 13

TENDER No. 19-2020

P:\2019\190565800-2020 local street renewal\04_cad\07 sheets\1905658-Farwell_Maybank-PP-04.dwg Last Saved: 4/21/2020 11:37 PM by dlane Plotted: 4/22/2020 10:19 AM by Dave Lane