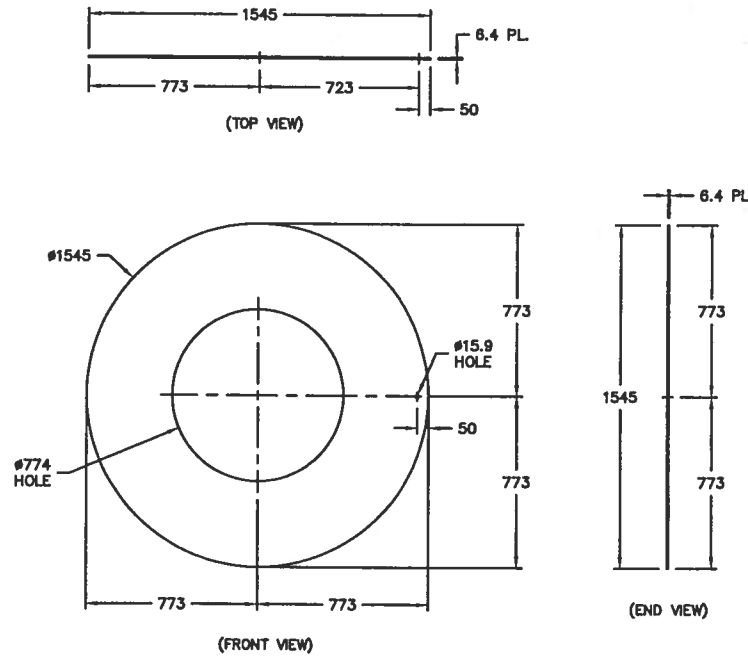


NOTES:

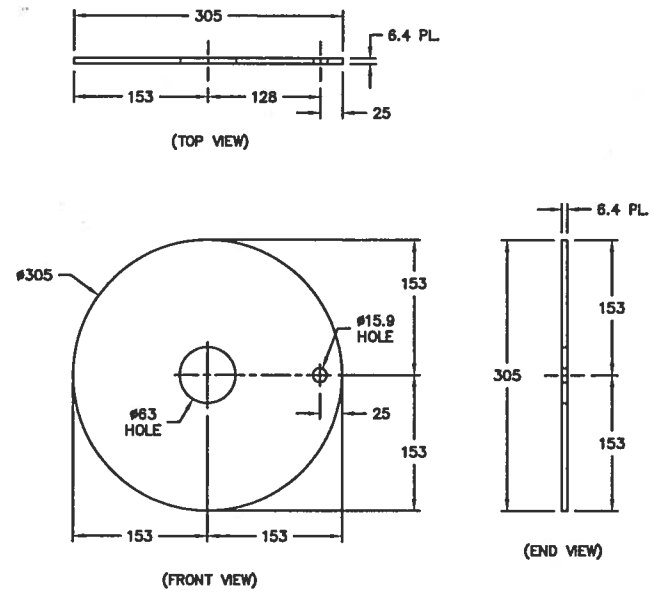
1. SEE TANK DRAWING FOR QUANTITIES OF ITEMS REQ'D.



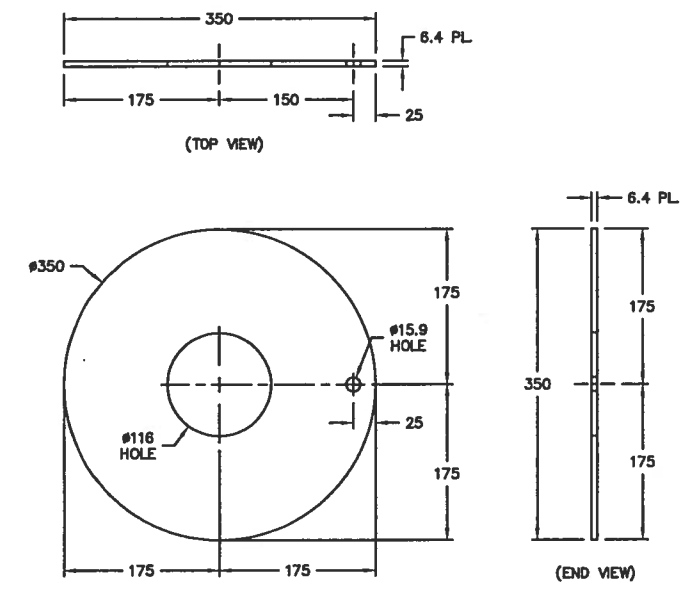
MK.	QTY.	PART NO.	DESCRIPTION	SIZE	MAT'L
1	REF.	MAKE	NAMEPLATE BRACKET - MK 5	2.7 SHT. (12 GA.) x 200 W. x 251 LG.	316L
2	REF.	MAKE	GUSSET PLATE - MK 7	12.7 PLT. x 125 W. x 300 LG.	316L
3	REF.	MAKE	ANCHOR PLATE - MK 7	12.7 PLT. x 125 W. x 125 LG.	316L
4	REF.	MAKE	LIFT LUG - MK 6	12.7 PLT. x 175 W. x 350 LG.	316L
5	REF.	MAKE	REPAD - N5 FITTING (2")	6.4 PLT. x 253 W. x 305 LG.	316L
6	REF.	MAKE	REPAD - N6 FITTING (4")	6.4 PLT. x 116 I.D. x 350 O.D.	316L
7	REF.	MAKE	REPAD - N7 FITTING (2")	6.4 PLT. x 63 I.D. x 305 O.D.	316L
8	REF.	MAKE	REPAD - M1 MANHOLE (30")	6.4 PLT. x 774 I.D. x 1545 O.D.	316L



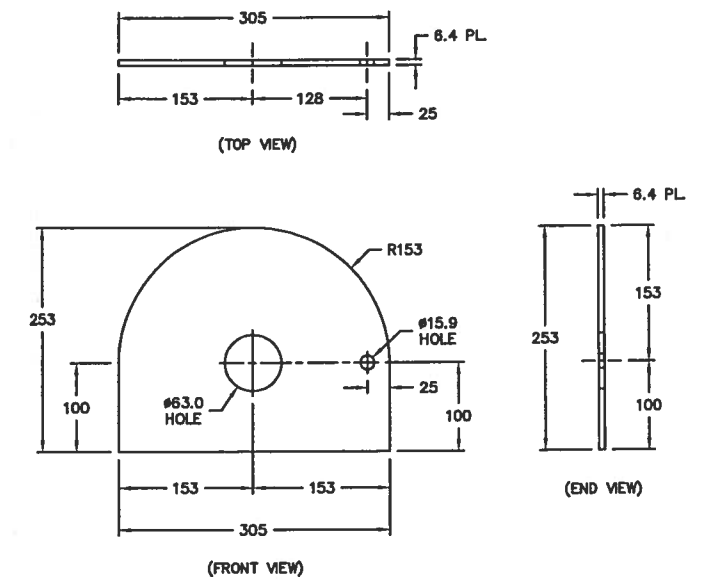
MK #8 DETAIL



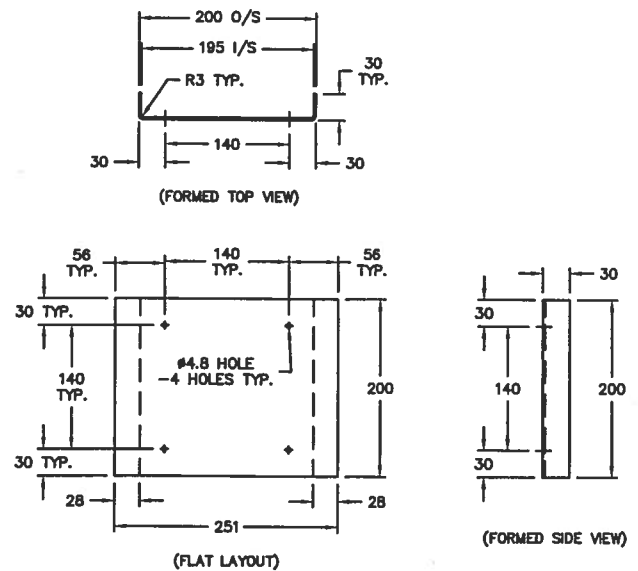
MK #7 DETAIL



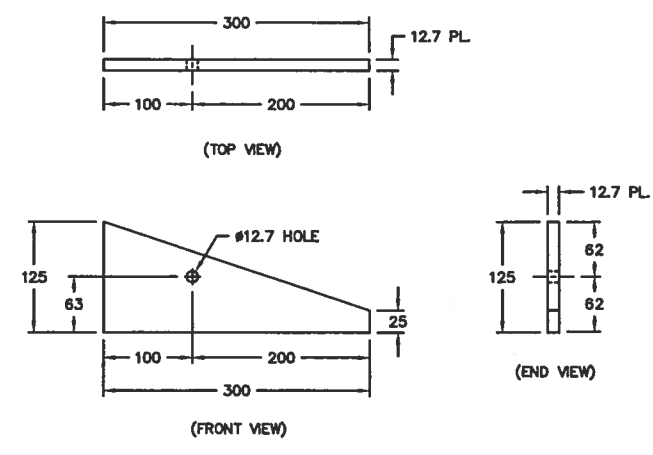
MK #6 DETAIL



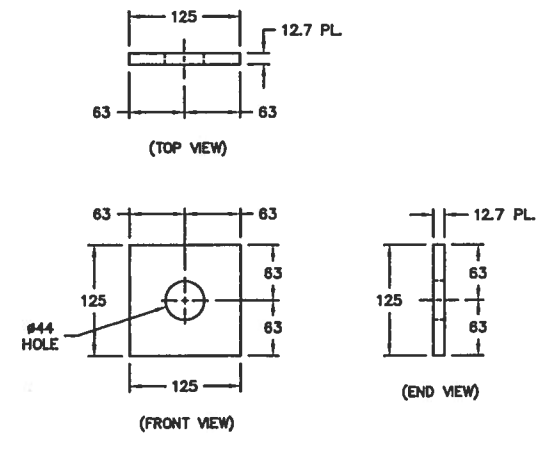
MK #5 DETAIL



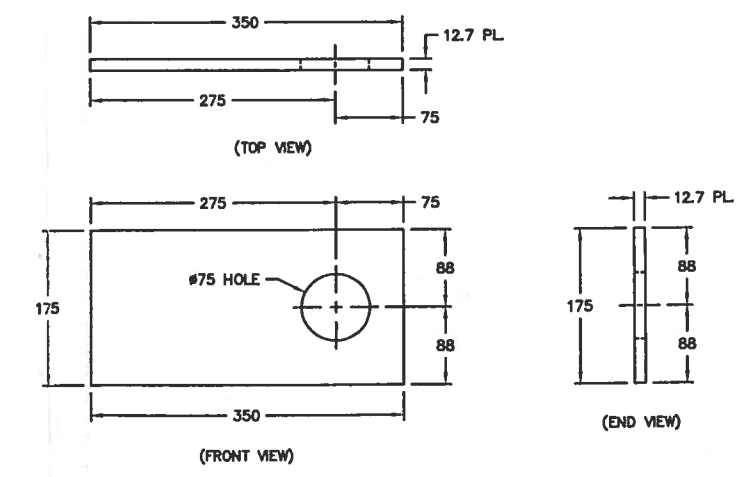
MK #1 DETAIL



MK #2 DETAIL



MK #3 DETAIL



MK #4 DETAIL

ALL DIMENSIONS HAVE A TOLERANCE OF ± 2mm, UNLESS OTHERWISE SPECIFIED.

DIMENSIONS SHOWN ARE <u>MM</u>		DESND.	WESTEEL THIS DRAWING IS THE EXCLUSIVE PROPERTY OF WESTEEL AND ALL RIGHTS ARE RESERVED. NO PART OF THIS DRAWING MAY BE USED OR REPRODUCED IN ANY MANNER WHATSOEVER WITHOUT WRITTEN PERMISSION FROM WESTEEL.	SCALE	DWN. (Y.M.D.)	LOCATION
IMP. UNITS SHOWN IN BRACKETS		-		N.T.S.	07.03.05	63
TOLERANCES (UNLESS OTHERWISE NOTED)		DWN.		CLIENT	EQUIP. NO.	
DIMENSIONS:		NK				
IMPERIAL (In.)		CHKD.	DRAWING TITLE	SIZE	WESTEEL DRAWING NO.	REV. NO.
METRIC (mm)		SW	TANK PARTS	A	20284-PRT	0
.x ± .1		APPD.	FOR API VERTICAL STORAGE TANK	W.O. NO.	R20284	2-6
.xx ± .03		-	COMPANY			
.xxx ± .010			COMSTOCK - CITY OF WPG.			
ANGULAR: ± 1°			PART NO.			
NO.	DATE	REVISION				
0	07.09.21	ISSUED FOR PRODUCTION				
			E.C.R.	BY	CH.	