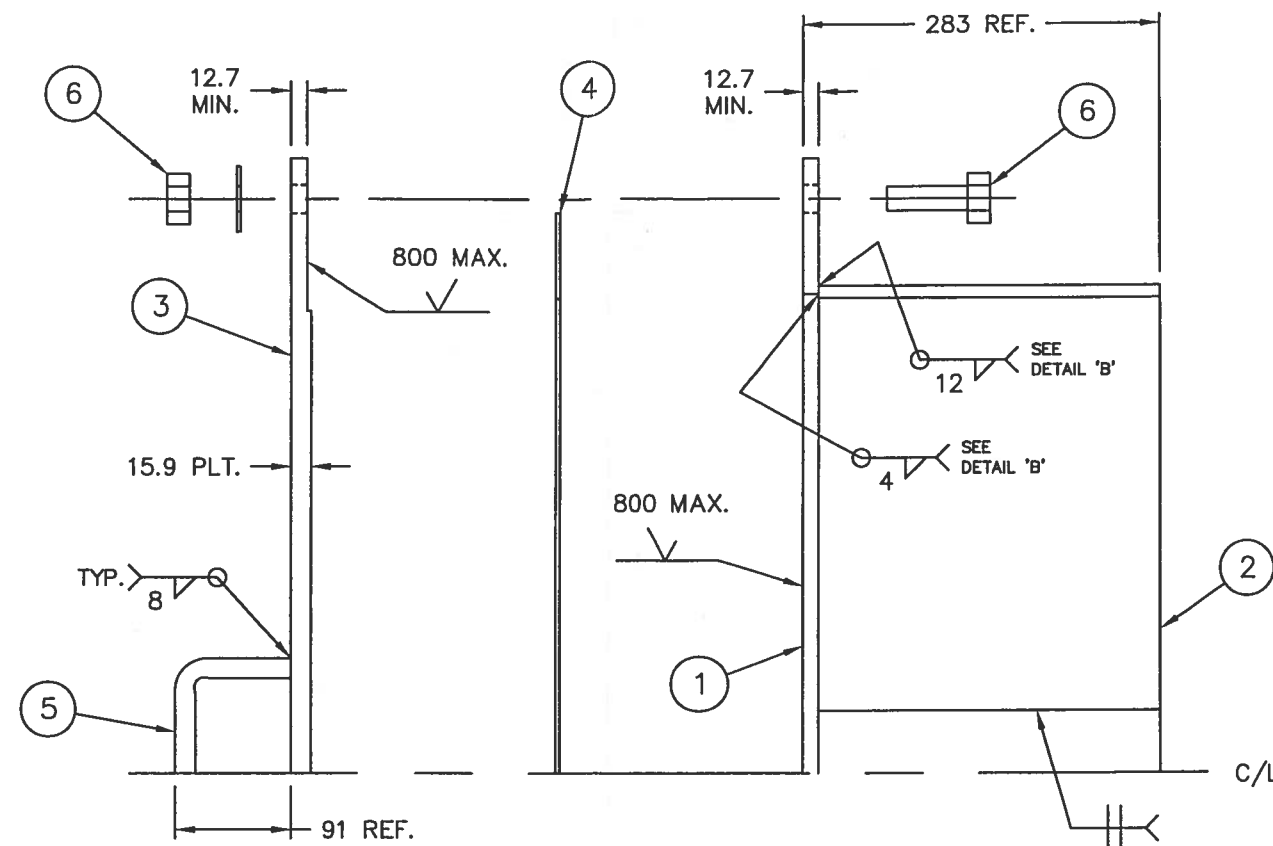
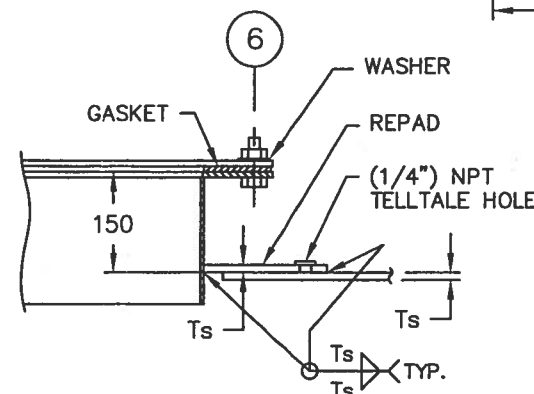


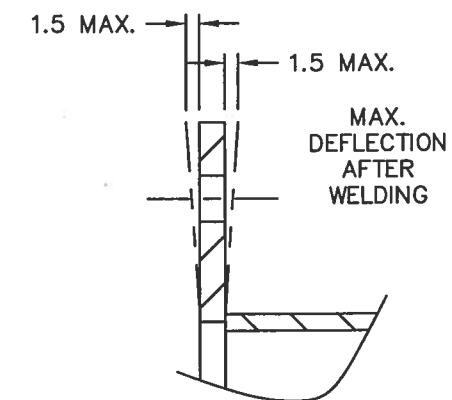
TOP VIEW (WITH/WITHOUT COVER)



SECTION 'A-A'



INSTALLATION DETAIL



DETAIL 'B'

NOTES:

1. Air/soap test after welding, before machining: 10 kPa min.; 35 kPa max.  
- ALTERNATE: Dye penetrant test.  
- RETEST MANHOLE WELDS AFTER INSTALLING IN TANK.
2. Machine face after welding and ensure machining is uniform around holes.  
- no raised areas
3. Face to be serrated having 24 to 40 grooves per inch.
4. Install in tank - Remove protective cover from machined surface before installing gasket.
5. Manhole rated up to 27' liquid head 1/8 ca.
6. Est. weight: 200 KGS (440 LBS)

All dimensions are in SI Units (millimeters) unless otherwise specified. Brackets [ ] = Imperial measure.

| MK | PART NO.    | QTY. | SIZE   | DESCRIPTION     | MAT'L  |
|----|-------------|------|--|-----------------|--------|
| 1  | -           | 1    | SEE DWG: 20283-MSP                               | FLANGE RING     | SS316L |
| 2  | 533158      | 1    | 9.5 PLT. x 270 W. x 2386 LG.<br>ROLL TO 750 I.D. | COLLAR          | SS316L |
| 3  | -           | 1    | SEE DWG: 20283-MSP                               | COVER           | SS316L |
| 4  | 026227-GSK1 | REF. | SEE DWG: 20284-GSK                               | GASKET - RING   | VITON  |
| 5  | -           | 2    | SEE DWG: 20283-HDL                               | HANDLE          | SS316L |
| 6  | 530926      | 42   | (3/4" $\phi$ x 2-1/2" LG.)                       | HEX HD BOLT     | SS316L |
|    | 530124      | 42   | (3/4" $\phi$ )                                   | c/w HEX NUT     | SS316L |
|    | 530082      | 42   | (3/4" $\phi$ )                                   | c/w FLAT WASHER | SS316L |

|        |  |         |  |  |  |          |        |                             |           |           |    |
|--------|--|---------|--|--|--|----------|--------|-----------------------------|-----------|-----------|----|
| DESND. |  | WESTEEL |  | THIS DRAWING IS THE EXCLUSIVE PROPERTY OF WESTEEL AND ALL RIGHTS ARE RESERVED. NO PART OF THIS DRAWING MAY BE USED OR REPRODUCED IN ANY MANNER WHATSOEVER WITHOUT WRITTEN PERMISSION FROM WESTEEL. |  | SCALE    | N.T.S. | DWN. (Y.M.D.)               | 07.07.31  | LOCATION  | 63 |
| DWN.   |  | NK      |  | DRAWING TITLE  |  | SIZE     | B      | DRAWING NO.                 | 20284-MHS | REV. NO.  | 0  |
| CHKD.  |  | SW      |  | 750 $\phi$ API/ULC B.L.L. MANHOLE FOR API VERTICAL STORAGE TANK SHELL  |  | CUSTOMER |        | COMSTOCK - CITY OF WINNIPEG |           | ORDER NO. |    |
| APPD.  |  | O       |  | 07.09.21 ISSUED FOR PRODUCTION   |  | NO.      |        | DATE                        |           | REVISION  |    |
| E.C.R. |  | BY      |  | CH.  |  | NK       |        | SW                          |           |           |    |