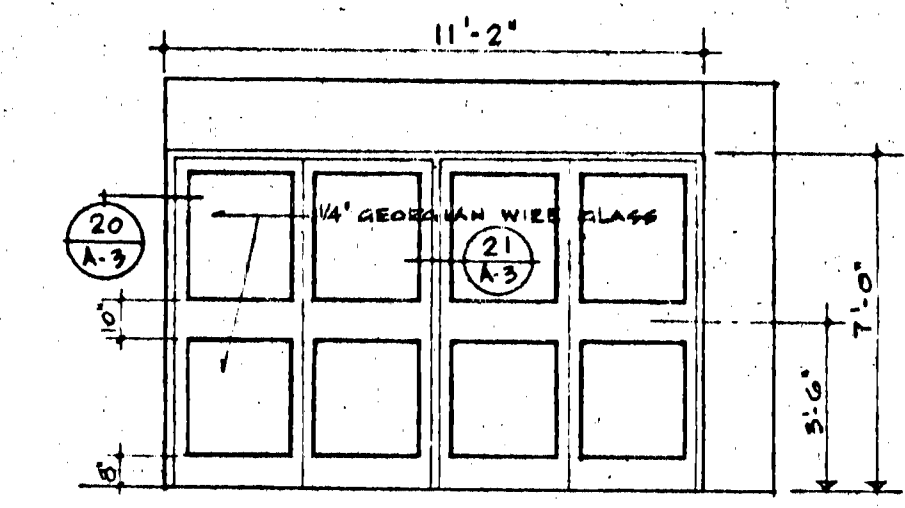


ELEV. 3 (A-1) DOOR NO. W04-A, B & C



ELEV. 4 (A-1) DOOR NO. W04

ROOM FINISH SCHEDULE													
ROOM NO.	ROOM NAME	FLOOR		BASE		NORTH WALL SOUTH		EAST WALL WEST		CEILING		REMARKS	
		MATL.	FIN.	MATL.	FIN.	MATL.	FIN.	MATL.	FIN.	HT.	MATL.		FIN.
W-04	WALKWAY NO. 2	CARPET	-	CARPET	A.P. BEH.	CARPET	-	F.P.D.	P.	5'-6"	STEEL FLECK	P.	4" RUBBER PAKE AT G.D. WALLS ONLY

DOOR SCHEDULE											
DOOR NO.	WIDTH	HEIGHT	THICK.	DOOR		FRAME		LINTEL TYPE	REMARKS		
				TYPE	MATL.	FIN.	TYPE			MATL.	FIN.
W04-A	2'-7"	6'-10"	1 3/4"	GLAZED	H.M.	P.	5 3/8"	H.M.	P.	STEEL □	SEE ELEV. 3/A-4
W04-B	2'-7"	3'-10"	1 3/4"	GLAZED	H.M.	P.	5 3/8"	H.M.	P.	STEEL □	SEE ELEV. 3/A-4
W04-C	2'-7"	6'-10"	1 3/4"	GLAZED	H.M.	P.	5 3/8"	H.M.	P.	STEEL □	SEE ELEV. 3/A-4
W04-D	2'-2'-0"	6'-10"	1 3/4"	GLAZED	H.M.	P.	5 3/8"	H.M.	P.	STEEL STUD	SEE ELEV. 4/A-4
W04-E	2'-2'-0"	6'-10"	1 3/4"	GLAZED	H.M.	P.	5 3/8"	H.M.	P.	STEEL STUD	SEE ELEV. 4/A-4

HARDWARE SCHEDULE			
2 PR. DOORS W04-D & E TYPE	ONE LAKEVIEW 2ND FL. CORR. DOOR	L.H.P.B.	ACTIVE
3 PR. DOORS W04-A, B & C	PPOMA WALKWAY CONVENTION CENTRE FROM WALKWAY	L.H.P.B.	ACTIVE
15 PR. BUTTS	FEBB168 4 1/2 x 4	C10B FMS	
2 SETS PANIC BOLTS	5557 x 5534 TP (LESS CYL.)	C10B TMS	
2 CYLINDERS	900	10B	
10 DOOR CLOSERS	4025-R x 4020-186	MFD C10B TMS	
10 O.H. DOOR STOPS	1-331	C10B TMS	
	- B/90° D.S.		
	- 2/110° D.S.		
10 KICKPLATES	5000 ENPO 10" x 32 1/2"	10B	
9 CO-ORDINATORS	1237	C10B TMS	

LIST OF DRAWINGS

- ARCHITECTURAL
- A-1 PLAN & ELEVATIONS
- A-2 SECTION & DETAILS
- A-3 SECTIONS & DETAILS
- STRUCTURAL
- S-1 FLOOR 3 ROOF FRAMING PLAN
- MECHANICAL
- M-1 FLOOR PLAN
- ELECTRICAL
- E-1 ELECTRICAL LAYOUT & DETAILS

DATE	DR	REVISION

THIS DRAWING MUST NOT BE SCALED.
 THE GENERAL CONTRACTOR SHALL VERIFY ALL DIMENSIONS, DATUMS AND LEVELS PRIOR TO COMMENCEMENT OF WORK. ALL ERRORS AND OMISSIONS TO BE REPORTED IMMEDIATELY TO THE ARCHITECT.
 VARIATIONS & MODIFICATIONS TO WORK SHOWN ON THESE DRAWINGS SHALL NOT BE CARRIED OUT WITHOUT WRITTEN PERMISSION FROM THE ARCHITECT.
 THIS DRAWING IS THE EXCLUSIVE PROPERTY OF THE ARCHITECTS AND CAN BE REPRODUCED ONLY WITH THE PERMISSION OF THE ARCHITECTS, IN WHICH CASE THE REPRODUCTION MUST BEAR THEIR NAME AS ARCHITECTS.

WINNIPEG CONSORTIUM
 THE 11 ARCHITECTURAL GROUP
 THE NUMBER TEN ARCHITECTURAL GROUP
ARCHITECTS
 3rd Floor Two Lakeside Square 175 Carlton St. Winnipeg S3C 3P9
 Telephone (204) 342-5544
 ASSOCIATE ARCHITECT

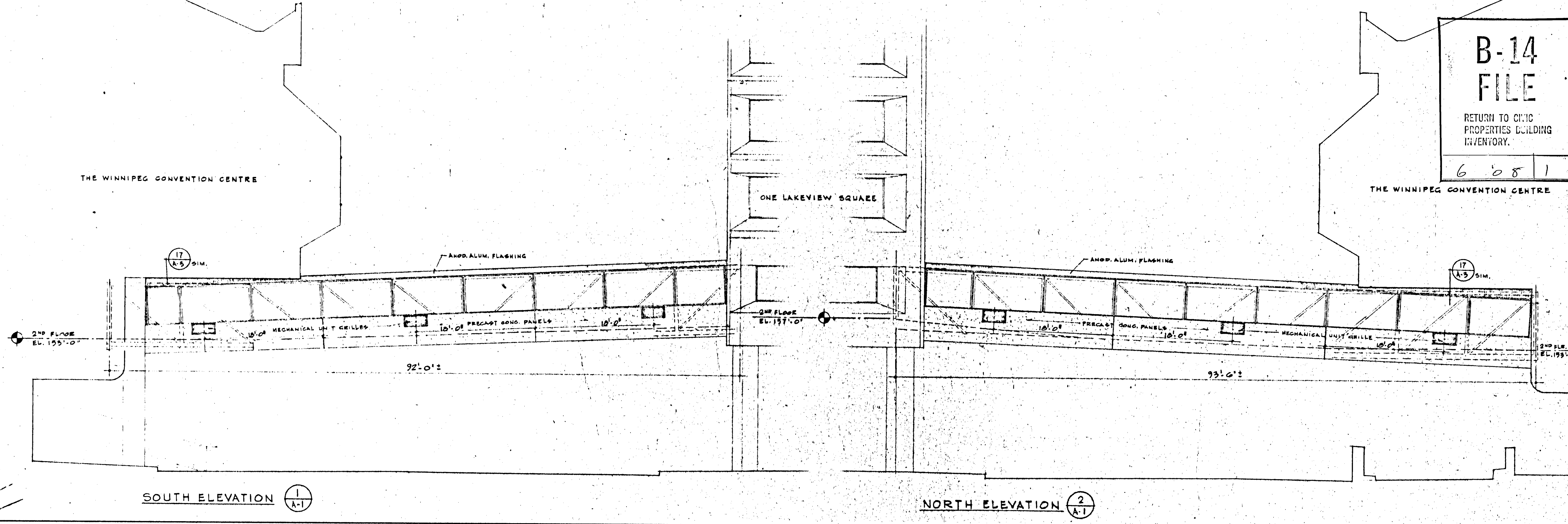
B-14 FILE
 RETURN TO CIVIC PROPERTIES BUILDING INVENTORY.
 6081

ARCH. SEAL
PROVINCE OF MANITOBA
 BLANKSTEIN COOP MANIWA BRIDGES REGISTERED ARCHITECTS
PROVINCE OF MANITOBA
 MICHENER FRIESEN KINRADE REGISTERED ARCHITECTS

PROJECT
PEDESTRIAN WALKWAY NO. 2 FROM THE WINNIPEG CONVENTION CENTRE TO ONE LAKEVIEW SQUARE

SHEET TITLE
PLAN & ELEVATIONS
 AUG 8 1974

DRAWN BY D.C.	DATE	SHEET NO. A-1
CHECKED BY	PROJECT NO.	FILE NO.



SOUTH ELEVATION 1 (A-1)

NORTH ELEVATION 2 (A-1)