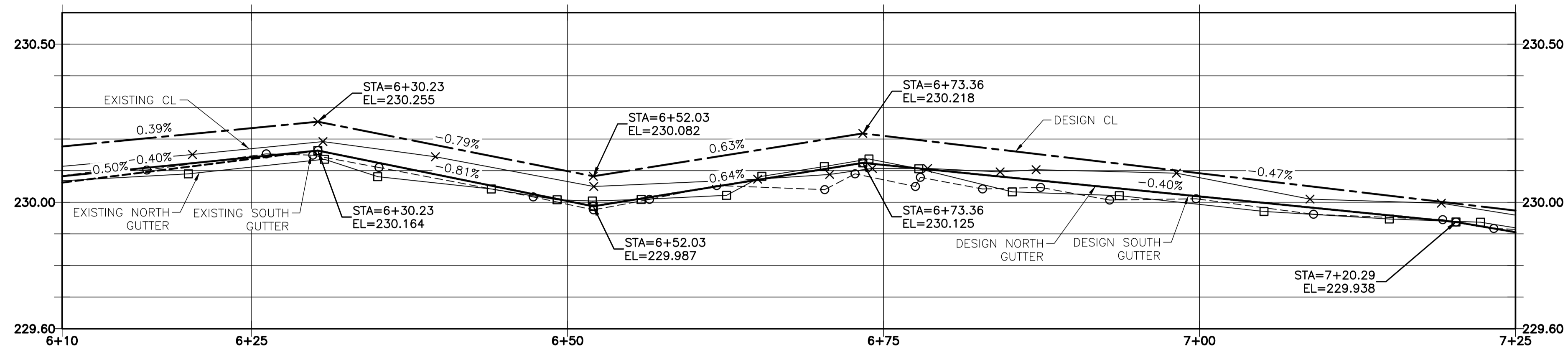
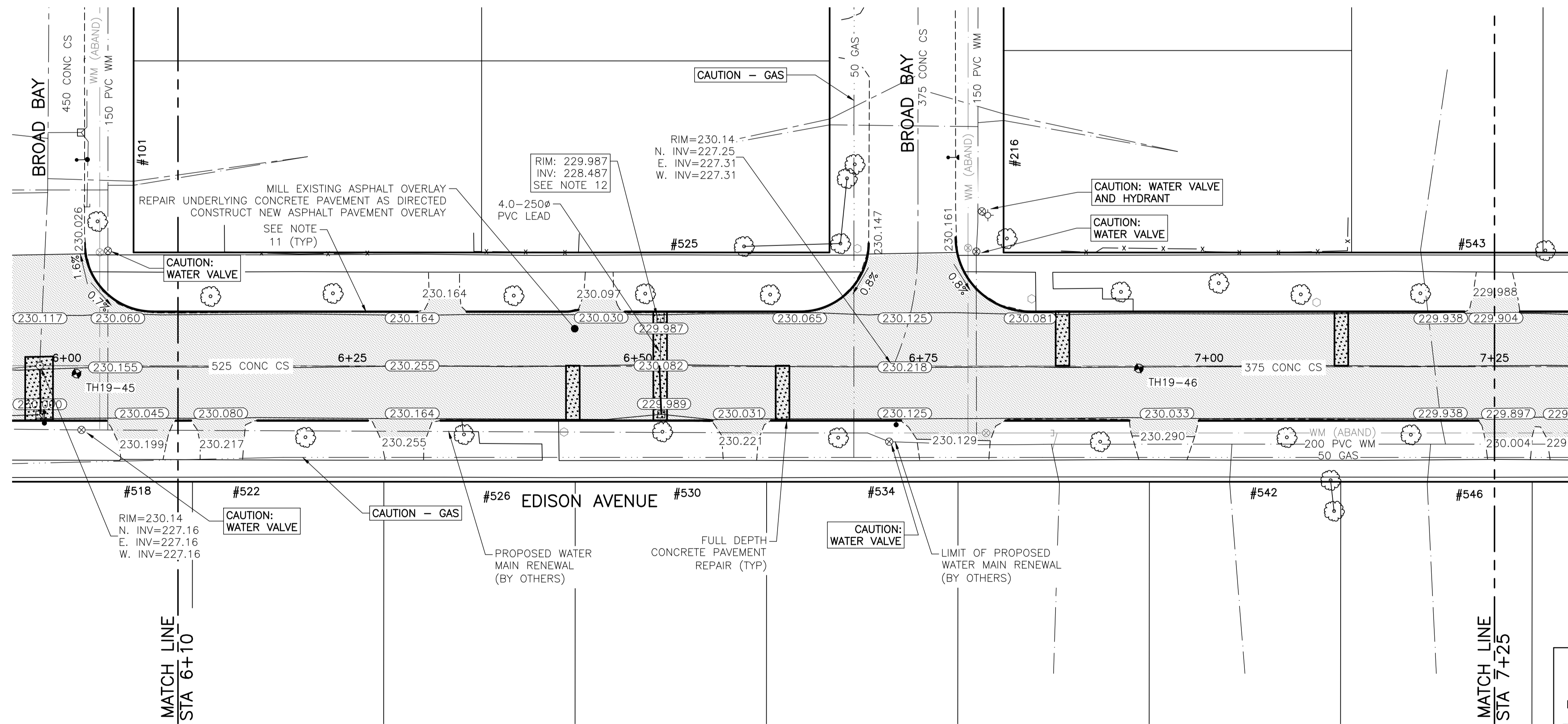


NOTES:

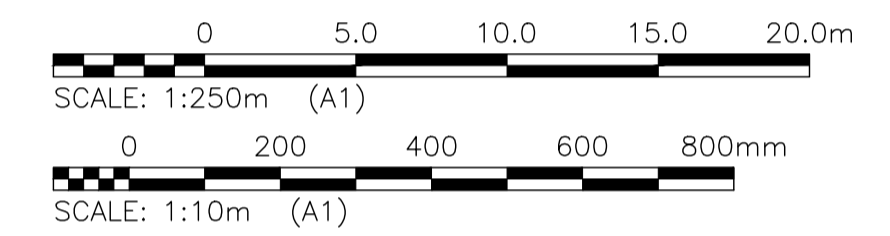
- STATION IN CENTRE OF RIGHT-OF-WAY UNLESS OTHERWISE NOTED.
- WEST PROPERTY LINE OF ROTHESAY AVENUE IS STA 1+00
- ALL MEASUREMENTS TO BACK OF CURB.
- ALL EXISTING TREES TO BE PROTECTED AND MAINTAINED THROUGHOUT CONSTRUCTION UNLESS NOTED OTHERWISE.
- HAND OR SOFT DIG METHODS REQUIRED OVER GAS UTILITIES AT INTERVALS DETERMINED BY THE CONTRACT ADMINISTRATOR TO DETERMINE DEPTH OF COVER.
- NO WORKS, INCLUDING CONCRETE CUTTING OR BREAKING, TO BE UNDERTAKEN NEAR GAS LINES UNTIL DEPTH OF COVER IS DETERMINED AND A MANITOBA HYDRO SAFETY WATCH REPRESENTATIVE IS ON SITE.
- NO VIBRATORY COMPACTION PERMITTED WITHIN 1.0M OF GAS MAINS.
- INSTALL MODIFIED BARRIER CURB AT ALL INTERSECTION RADII, ALLEY RADII, AND BULLNOSES.
- CONSTRUCT NEW MONOLITHIC CURB RAMP (10mm HEIGHT INTEGRAL)
- INSTALL DETECTABLE WARNING SURFACE TILE AT STREET INTERSECTIONS.
- REMOVE EXISTING CURB AND CONSTRUCT NEW BARRIER CURB 150mm REVEAL, DOWELED.
- INSTALL CATCH BASIN AND BARRIER CURB AND GUTTER INLET FRAME (SD-023). INSTALL NEW 250 LEAD @ 2% MINIMUM GRADE
- CONSTRUCT ASPHALT OVERLAY ON DRIVEWAYS TO ACHIEVING MINIMUM GRADE
- CONCRETE REPAIRS SHOWN BASED ON VISUAL INSPECTION PRIOR TO REMOVAL OF ASPHALT OVERLAY. FINAL REPAIR LIMITS AND DIMENSIONS MAY VARY FROM THOSE SHOWN.
- ADJUST ALL WATER VALVES, WATER SERVICE VALVES, MANHOLES AND CATCH BASINS TO GRADE.



EDISON AVENUE - PROFILE



EDISON AVENUE - PLAN



LOCATIONS OF UNDERGROUND STRUCTURES AS SHOWN ARE BASED ON THE BEST INFORMATION AVAILABLE. BUT NO GUARANTEE IS GIVEN THAT ALL EXISTING UTILITIES ARE SHOWN OR THAT THE GIVEN LOCATIONS ARE EXACT. CONFIRMATION OF ALL SERVICES MUST BE OBTAINED FROM INDIVIDUAL UTILITIES BEFORE PROCEEDING WITH CONSTRUCTION.

PROPERTY LIMITS DELINEATION
DELINEATION OF PROPERTY LIMITS AS SHOWN ON THIS DWG DOES NOT REPRESENT A "LEGAL SURVEY". KGS GROUP MAKES NO REPRESENTATION OR WARRANTY AS TO THE ACCURACY OF PROPERTY LIMITS DELINEATED ON THIS DWG, NOR ON THE DIMENSIONAL ACCURACY OF DWG FEATURES RELATIVE TO THOSE PROPERTY LIMITS.

WARNING
NOTIFY THE GAS COMPANY OF THE PROPOSED LOCATION OF EXCAVATION.
TAKE PRECAUTION TO AVOID DAMAGE TO GAS COMPANY INSTALLATIONS.
SEE PROVINCIAL REGULATION 210/72 FOR DETAILS.

METRIC
WHOLE NUMBERS INDICATE MILLIMETRES
DECIMALIZED NUMBERS INDICATE METRES

THE WATER DISTRIBUTION SYSTEM IN THIS AREA IS CATHODICALLY PROTECTED. ANY DAMAGE TO THIS SYSTEM MUST BE REPORTED TO THE WATER AND WASTE DEPARTMENT IMMEDIATELY AND ALL COSTS, MATERIALS AND LABOUR ASSOCIATED WITH THE RESTORATION OF THIS SYSTEM WILL BE THE RESPONSIBILITY OF THE CONTRACTOR.

PRELIMINARY
NOT TO BE USED FOR CONSTRUCTION

2019-05-09

U:\FMS\18-0107-016\18-0107-016_35 EDISON.DWG
PLOT: 1:1 (A-1)

300_LDS	LAND DRAINAGE SEWER	300_LDS	TEST HOLE			
250_WWS	WASTE WATER SEWER	250_WWS	GUY WIRE			
---	GAS	---	LIGHT STANDARD			
---	HYDRO	---	BACK OF CURB			
---	M.T.S.	---	CONCRETE			
150_WM	WATERMAIN	150_WM	ASPHALT			
+	HYDRANT	+	SIDEWALK			
+	VALVE	+	PROPERTY LINE			
o	MANHOLE	o	SURVEY BAR			
□	CATCH BASIN	□	GEODETIC BENCHMARK			
▽	CURB INLET	▽	ELEVATION			
•	POLES	•				
---	LEGEND-PLAN	---	LEGEND-PLAN			
---	PROPOSED	---	PROPOSED			
---	EXISTING	---	EXISTING			
---	LEGEND-PROFILE	---	LEGEND-PROFILE			
---	PROPOSED	---	PROPOSED			
---	EXISTING	---	EXISTING			

LOCATION APPROVED UNDERGROUND STRUCTURES

SUPV. U/G STRUCTURES COMMITTEE DATE

NOTE:
LOCATION OF UNDERGROUND STRUCTURES AS SHOWN ARE BASED ON THE BEST INFORMATION AVAILABLE BUT NO GUARANTEE IS GIVEN THAT ALL EXISTING UTILITIES ARE SHOWN OR THAT THE GIVEN LOCATIONS ARE EXACT. CONFIRMATION OF EXISTENCE AND EXACT LOCATION OF ALL SERVICES MUST BE OBTAINED FROM THE INDIVIDUAL UTILITIES BEFORE PROCEEDING WITH CONSTRUCTION.

B.M. KGS_BASE	COORDINATE SYSTEM: COV028
ELEV. 249.221	
DESIGNED BY: MH	CHECKED BY:
DRAWN BY: MH	APPROVED BY:
C RE-ISSUED FOR TENDER	19/05/08
B ISSUED FOR TENDER	19/05/02 JB
A ISSUED FOR REVIEW	19/03/05 JB
NO. REVISIONS	DATE BY
	2019/01/24

KGS GROUP CONSULTING ENGINEERS

ENGINEER'S SEAL

DESIGNED BY: MH
CHECKED BY:
DRAWN BY: MH
APPROVED BY:
HOR. SCALE: 1:250
VERTICAL: 1:10
RELEASED FOR CONSTRUCTION:
DATE: 2019/01/24

CONSULTANT DRAWING NO.
C113

THE CITY OF WINNIPEG PUBLIC WORKS DEPARTMENT ENGINEERING DIVISION

PROJECT TITLE
2019 LOCAL STREET PACKAGE

SHEET 13 OF 21

COMPUTER FILE NAME
18-0107-016_35 EDISON.DWG

CITY DRAWING NUMBER

EDISON AVENUE

PLAN AND PROFILE 06+10 TO 07+25