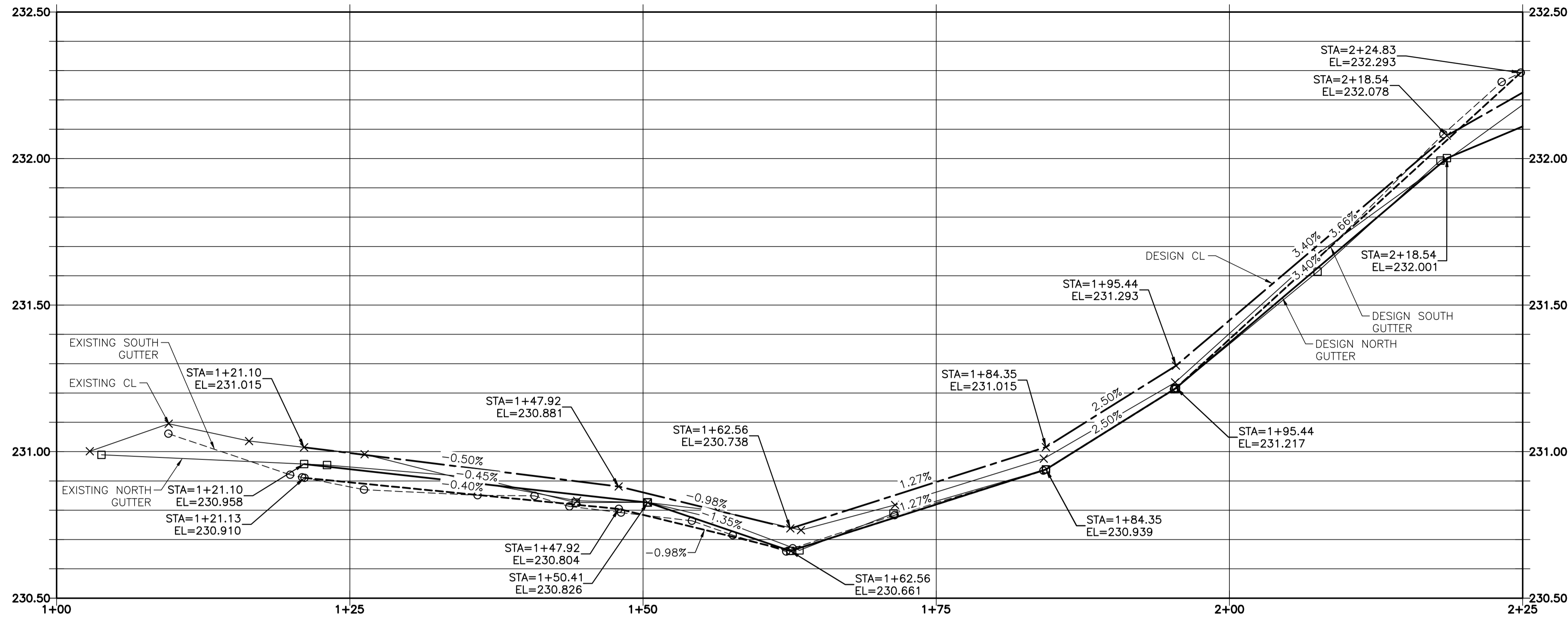
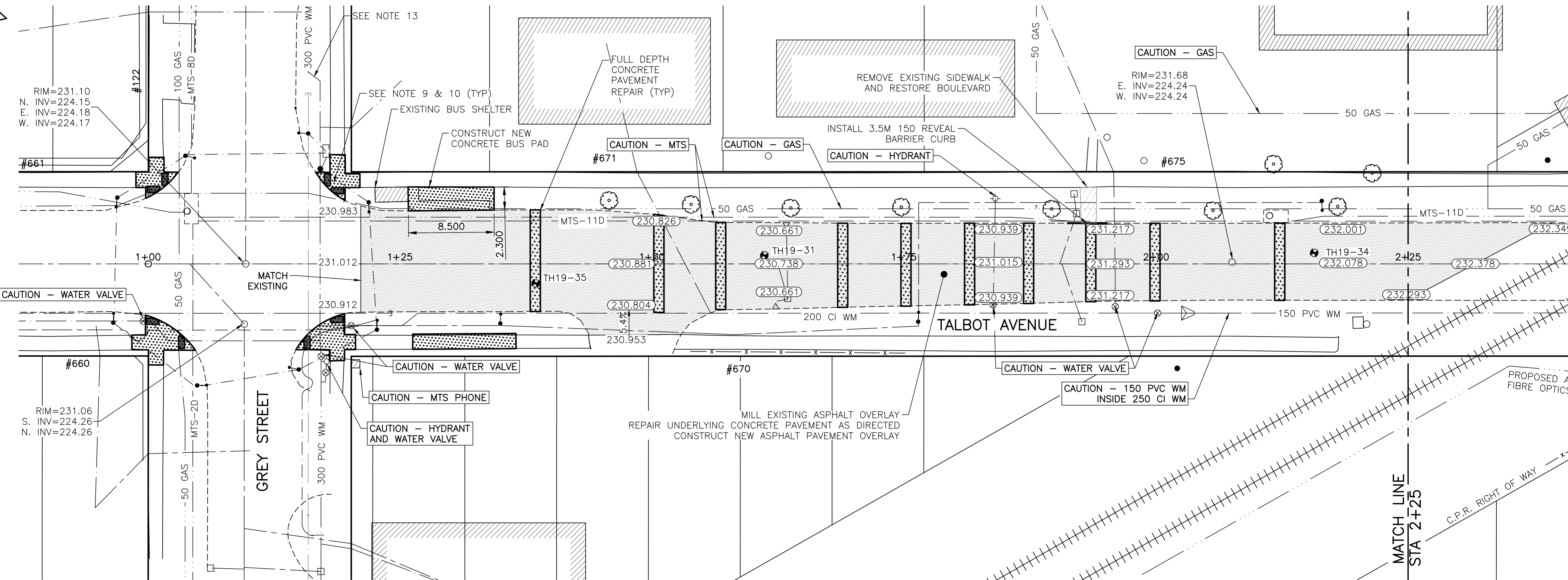
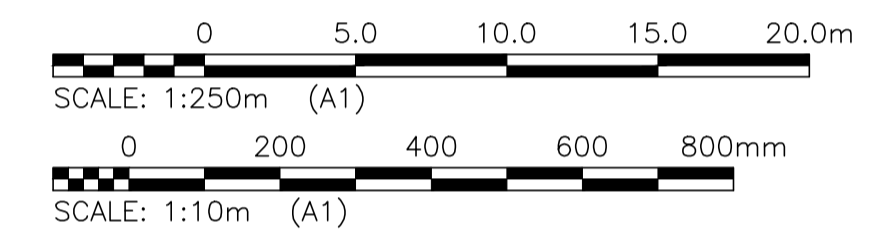


NOTES:

1. STATION IN CENTRE OF RIGHT-OF-WAY UNLESS OTHERWISE NOTED.
2. WEST PROPERTY LINE OF GREY STREET IS STA 1+00
3. ALL MEASUREMENTS TO BACK OF CURB.
4. ALL EXISTING TREES TO BE PROTECTED AND MAINTAINED THROUGHOUT CONSTRUCTION UNLESS NOTED OTHERWISE.
5. HAND OR SOFT DIG METHODS REQUIRED OVER GAS UTILITIES AT INTERVALS DETERMINED BY THE CONTRACT ADMINISTRATOR TO DETERMINE DEPTH OF COVER.
6. NO WORKS, INCLUDING CONCRETE CUTTING OR BREAKING, TO BE UNDERTAKEN NEAR GAS LINES UNTIL DEPTH OF COVER IS DETERMINED AND A MANITOBA HYDRO SAFETY WATCH REPRESENTATIVE IS ON SITE.
7. NO VIBRATORY COMPACTION PERMITTED WITHIN 1.0M OF GAS MAINS. ADJUST ALL WATER VALVES, MANHOLES AND CATCH BASINS TO GRADE.
8. INSTALL MODIFIED BARRIER CURB AT ALL INTERSECTION RADII, ALLEY RADII, AND BULLNOSES.
9. CONSTRUCT NEW MONOLITHIC CURB RAMP (10mm HEIGHT INTEGRAL)
10. INSTALL DETECTABLE WARNING SURFACE TILE AT STREET INTERSECTIONS.
11. CONCRETE REPAIRS SHOWN BASED ON VISUAL INSPECTION PRIOR TO REMOVAL OF ASPHALT OVERLAY. FINAL REPAIR LIMITS AND DIMENSIONS MAY VARY FROM THOSE SHOWN.
12. ADJUST ALL WATER VALVES, WATER SERVICE VALVES, MANHOLES AND CATCH BASINS TO GRADE.
13. WATER DISTRIBUTION SYSTEM IN THIS AREA IS CATHODICALLY PROTECTED. ANY DAMAGE TO THIS SYSTEM MUST BE REPORTED TO WATER AND WASTE DEPARTMENT IMMEDIATELY AND ALL COST, MATERIAL AND LABOUR ASSOCIATED WITH THE RESTORATION OF THIS SYSTEM WILL BE THE RESPONSIBILITY OF THE CONTRACTOR.



TALBOT AVENUE - PROFILE



TALBOT AVENUE - PLAN

LOCATIONS OF UNDERGROUND STRUCTURES AS SHOWN ARE BASED ON THE BEST INFORMATION AVAILABLE. BUT NO GUARANTEE IS GIVEN THAT ALL EXISTING UTILITIES ARE SHOWN OR THAT THE GIVEN LOCATIONS ARE EXACT. CONFIRMATION OF THE EXISTENCE AND EXACT LOCATION OF ALL SERVICES MUST BE OBTAINED FROM INDIVIDUAL UTILITIES BEFORE PROCEEDING WITH CONSTRUCTION.

PROPERTY LIMITS DELINEATION
DELINEATION OF PROPERTY LIMITS AS SHOWN ON THIS DWG DOES NOT REPRESENT A "LEGAL SURVEY". KGS GROUP MAKES NO REPRESENTATION OR WARRANTY AS TO THE ACCURACY OF PROPERTY LIMITS DELINEATED ON THIS DWG, NOR ON THE DIMENSIONAL ACCURACY OF DWG FEATURES RELATIVE TO THOSE PROPERTY LIMITS.

WARNING
NOTIFY THE GAS COMPANY OF THE PROPOSED LOCATION OF EXCAVATION. TAKE PRECAUTION TO AVOID DAMAGE TO GAS COMPANY INSTALLATIONS. SEE PROVINCIAL REGULATION 210/72 FOR DETAILS.

METRIC
WHOLE NUMBERS INDICATE MILLIMETRES
DECIMALIZED NUMBERS INDICATE METRES

PRELIMINARY
NOT TO BE USED FOR CONSTRUCTION

2019-05-08 U:\FMS\18-0107-016\18-0107-016_35 TALBOT.DWG PLOT 1:1 (A-1)

300 LBS	LAND DRAINAGE SEWER	300 LBS	TEST HOLE			
250 WWS	WASTE WATER SEWER	250 WWS	GUY WIRE			
	GAS		LIGHT STANDARD			
	HYDRO		BACK OF CURB			
	M.T.S.		CONCRETE			
150 WM	WATERMAIN	150 WM	ASPHALT			
	HYDRANT		SIDEWALK			
	VALVE		PROPERTY LINE			
	MANHOLE		SURVEY BAR			
	CATCH BASIN		GEODETIC BENCHMARK			
	CURB INLET		ELEVATION			
	POLES					
EXISTING	LEGEND-PLAN	PROPOSED	EXISTING	LEGEND-PLAN	PROPOSED	EXISTING
				LEGEND-PROFILE	PROPOSED	

LOCATION APPROVED UNDERGROUND STRUCTURES

NOTE:
LOCATION OF UNDERGROUND STRUCTURES AS SHOWN ARE BASED ON THE BEST INFORMATION AVAILABLE BUT NO GUARANTEE IS GIVEN THAT ALL EXISTING UTILITIES ARE SHOWN OR THAT THE GIVEN LOCATIONS ARE EXACT. CONFIRMATION OF THE EXISTENCE AND EXACT LOCATION OF ALL SERVICES MUST BE OBTAINED FROM THE INDIVIDUAL UTILITIES BEFORE PROCEEDING WITH CONSTRUCTION.

B.M. KGS_BASE ELEV. 249.221	COORDINATE SYSTEM: COV028	KGS GROUP CONSULTING ENGINEERS	ENGINEER'S SEAL
DESIGNED BY: MH	CHECKED BY:	PROJECT TITLE: 2019 LOCAL STREETS PACKAGE	SHEET 7 OF 21
DRAWN BY: MH	APPROVED BY:	TALBOT AVENUE	COMPUTER FILE NAME: 18-0107-016_35 TALBOT.DWG
C RE-ISSUED FOR TENDER 19/05/08		PLAN AND PROFILE 01+00 TO 02+25	CITY DRAWING NUMBER: -
B ISSUED FOR TENDER 19/05/02 JB			
A ISSUED FOR REVIEW 19/03/05 JB			
NO. REVISIONS	DATE	BY	DATE
			2019/01/24

Winnipeg THE CITY OF WINNIPEG
PUBLIC WORKS DEPARTMENT
ENGINEERING DIVISION

CONSULTANT DRAWING NO. **C107**