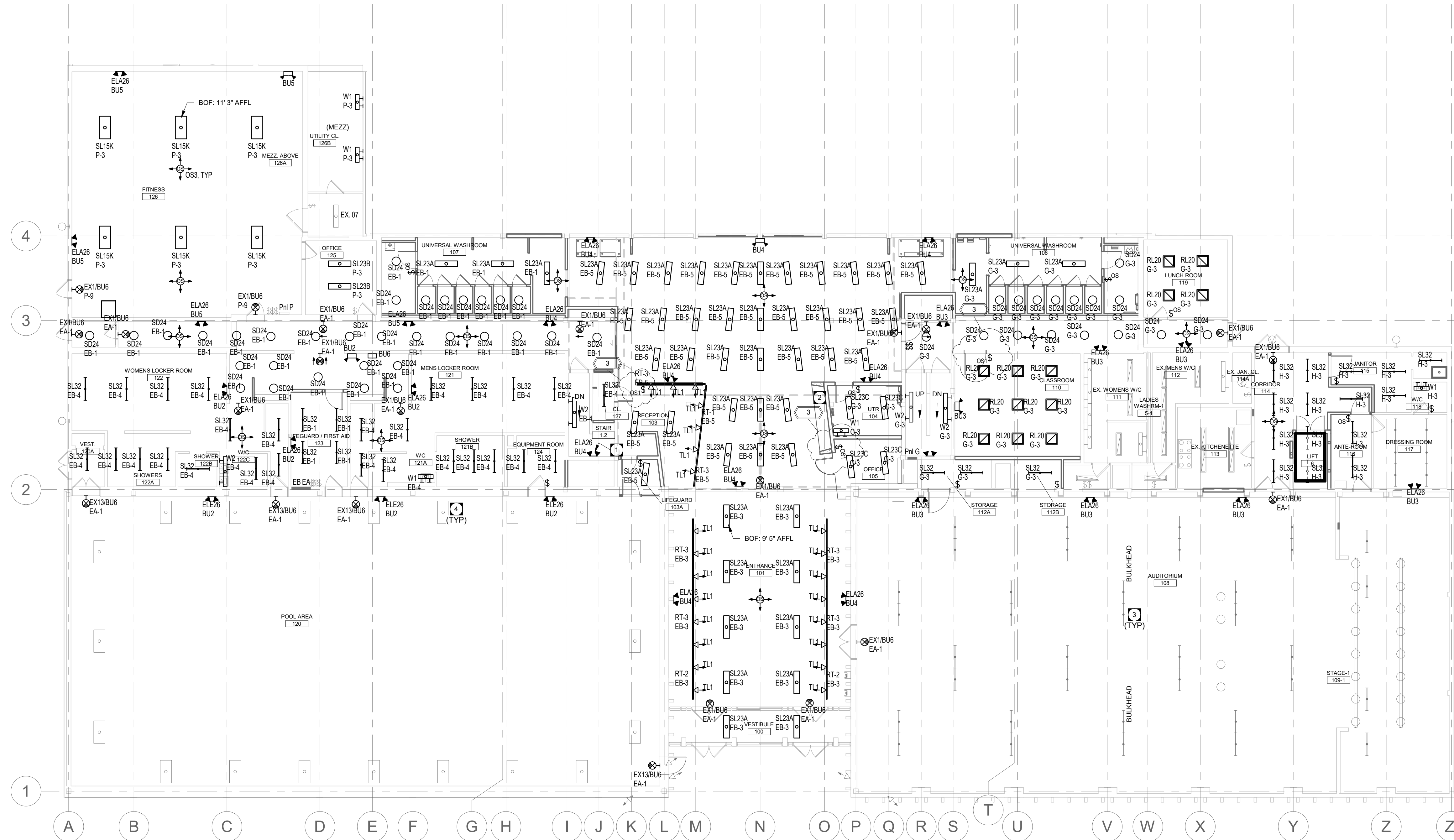


KEY NOTES

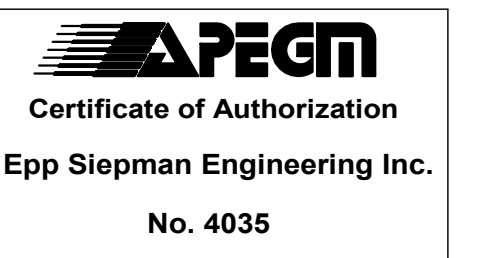
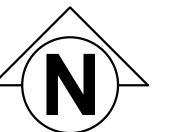
- 1 7' ABOVE LANDING.
- 2 PROVIDE CONDUIT PATHWAY STUBBED OUT IN CEILING FOR FUTURE DISPLAY CASE LIGHTING
- 3 LIGHTING IN AUDITORIUM TO REMAIN.
- 4 LIGHTING IN POOL TO REMAIN.

GENERAL NOTES

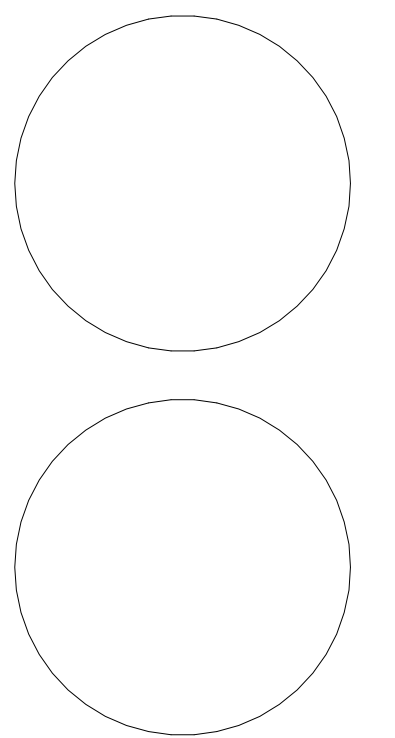
- A. WHERE NEW TOGGLE SWITCHES, OR DIMMER CONTROLS ARE ADJACENT EACH OTHER, PROVIDE GANGED SWITCHING TO ACCOMMODATE TOTAL NUMBER OF SWITCHES, UNLESS NOTED OTHERWISE.
- B. ALL RECESSED LIGHTING FIXTURES IN LAY-IN CEILINGS SHALL BE INSTALLED WITH 6' LONG FLEXIBLE METAL CONDUIT.
- C. ALL MOUNTING HEIGHTS FOR LUMINAIRES ARE TO THE BOTTOM OF THE LUMINAIRE UNLESS NOTED OTHERWISE.
- D. REFER TO ARCHITECTURAL ELEVATIONS FOR MOUNTING HEIGHTS OF EXTERIOR OR INTERIOR LUMINAIRES.
- E. SUSPEND EMERGENCY LIGHTING HEADS AND EXIT SIGNS FROM STRUCTURE TO CLEAR BEAMS, MECHANICAL DUCTWORK AND PIPING SUCH THAT SAME ARE VISIBLE BELOW BEAMS AND OUT OF WAY OF PEDESTRIAN TRAFFIC.
- F. ALL MOUNTING HEIGHTS FOR LUMINAIRES ARE TO THE BOTTOM OF THE LUMINAIRE UNLESS NOTED OTHERWISE.
- G. LUMINAIRES IN CRAWLSPACE SHALL BE MOUNTED BELOW STRUCTURE CLEAR OF BEAMS, MECHANICAL DUCTWORK AND PIPING.



LEVEL 1 - LIGHTING RENOVATION 1
3/32" = 1'-0" EL2.1-R2



This is a print of a document that has been electronically authenticated with technology authorized by the APEGM. The original is in electronic form.



This drawing must not be scaled. The contractor shall verify all dimensions and other data on site prior to commencement of work. Discrepancies, errors, and omissions are to be reported to Public City Architecture Inc. prior to proceeding with the Work.

Drawings and specifications as instruments of service are the property of Public City Architecture Inc. the copyright in the same being reserved. No reproduction or revision to these drawings may be made without the permission of Public City Architecture Inc., and when made, must bear their name. All prints to be returned to Public City Architecture Inc. upon request.

Project
ST. JAMES CIVIC CENTRE

Drawing
LEVEL 1 RENOVATION - LIGHTING PLAN

Drawn By: JA Review By: MP
Scale: As indicated Tender No: 1176-2019
Date: 11/06/19
Sheet: EL2.1-R2