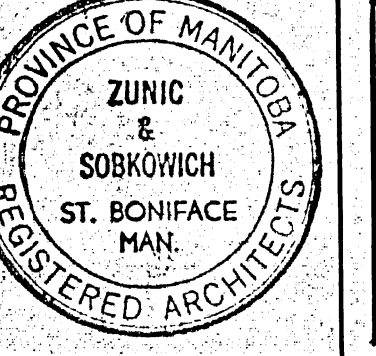
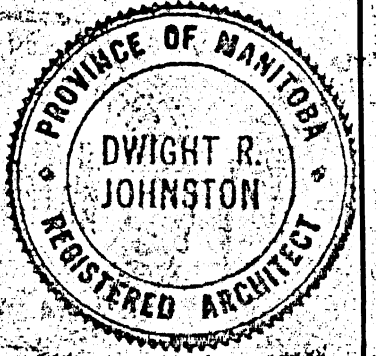


DUMP HOUSE
 RE-CONNECT EXISTING
 20 hp 550V 3P WELL PUMP
 MTRD. TO NEW SERVICE
 RE-USE EXISTING BRNTRN.
 REMOVE UNNECESSARY EXIST. EQUIP.
 INSTALL 1- TYPE 22 FUTURE SWITCH
 & RECEPTACLE COT. A30

B-14
FILE
 RETURN TO CIVIC
 PROPERTIES BUILDING
 INVENTORY.
 3 | 67 | 2

KRUSE & ASSOCIATES
 CONSULTING ENGINEERS
 1700 ELLICE AVE. WINNIPEG 21, MAN.
 PHONE 786-3441



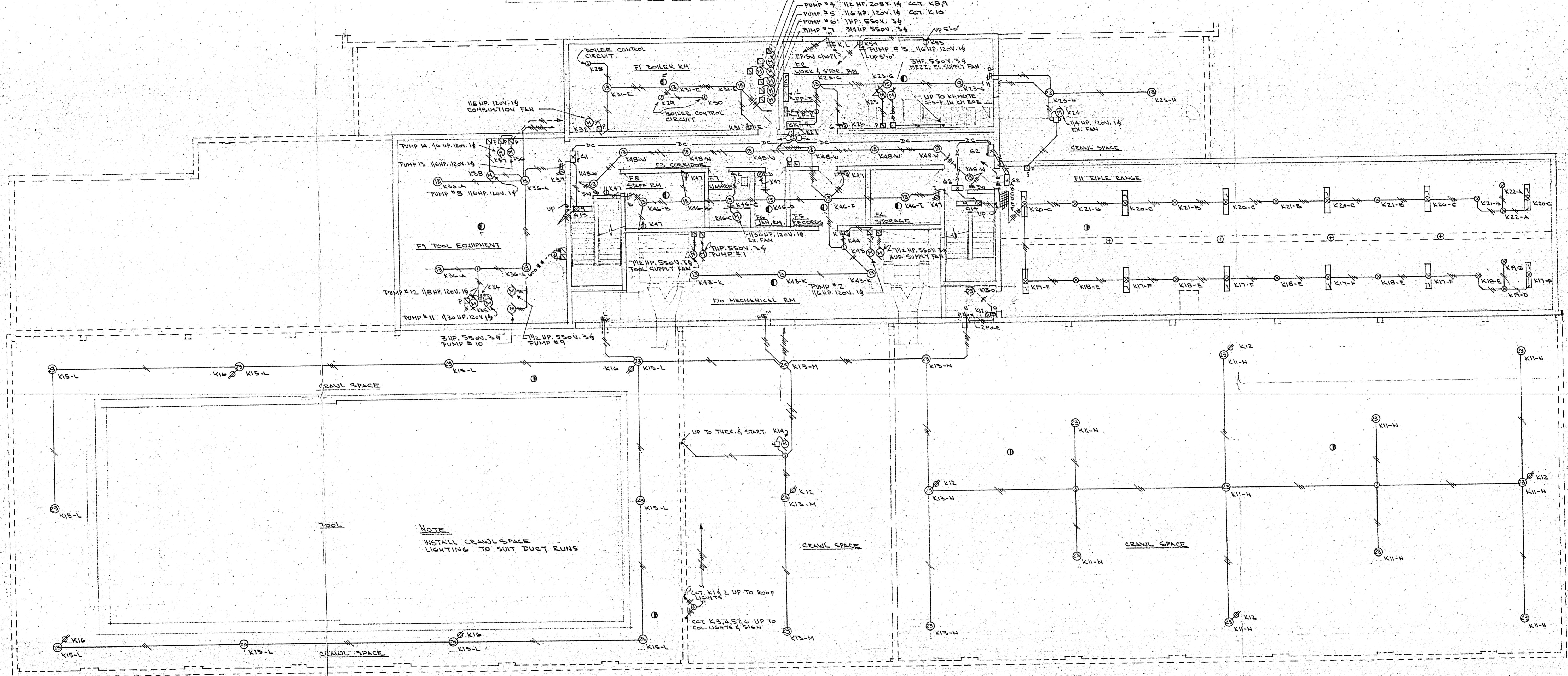
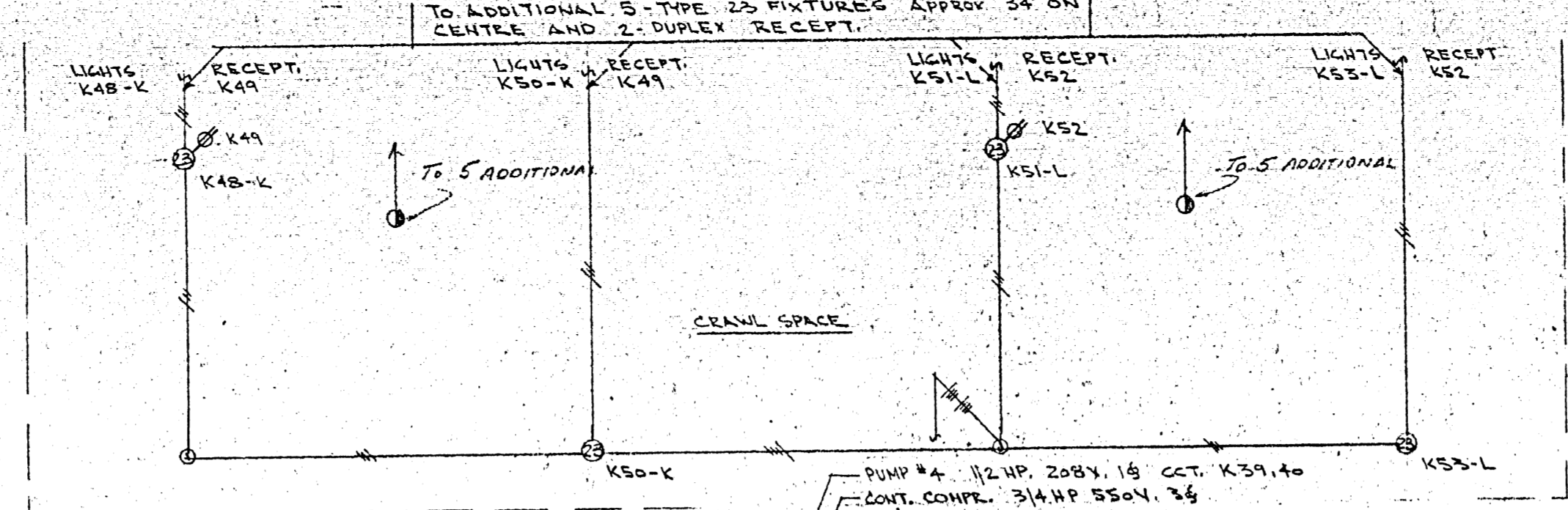
ZUNIC & SOBKOWICH
DWIGHT R. JOHNSTON
 ARCHITECTS
 204-309 TACHE AVE. ST. BONIFACE MAN.
 1854 PORTAGE AVE. ST. JAMES MAN.

REVISIONS			
NO.	DESCRIPTION	BY	DATE

DRAWN BY :
 RGS - LB
 CHECKED BY :
 RGS
 DATE :
 JUN 11 1965

ST. JAMES CIVIC CENTRE
 NESS AVENUE & WOODLAWN STREET
 CITY OF SAINT JAMES, MANITOBA

DRAWING NUMBER: **E-1**
 TITLE:
 ELECTRICAL SITE PLAN



PANEL BREAKER SCHEDULE

PANEL 'K' SECT. 1 (42 ckt)

LIGHTING	16 - 15 AMP. 1POLE	1-5, 11, 12, 15, 17-23, 30
LIGHTS & RECEPT.	1 - 15 "	31
RECEPT.	5 - 15 "	13, 16, 26, 24, 37
SIGN	1 - 15 "	36
BAT. UNIT	1 - 15 "	27
BOILER CONTROL CKT.	3 - 15 "	28, 29, 30
MOTORS	7 - 15 "	10, 14, 24, 25, 32, 35, 38
SPARES	2 - 15 " 2POLE	8, 9, 39, 40
	4 - 15 " 1POLE	7, 33, 41, 42

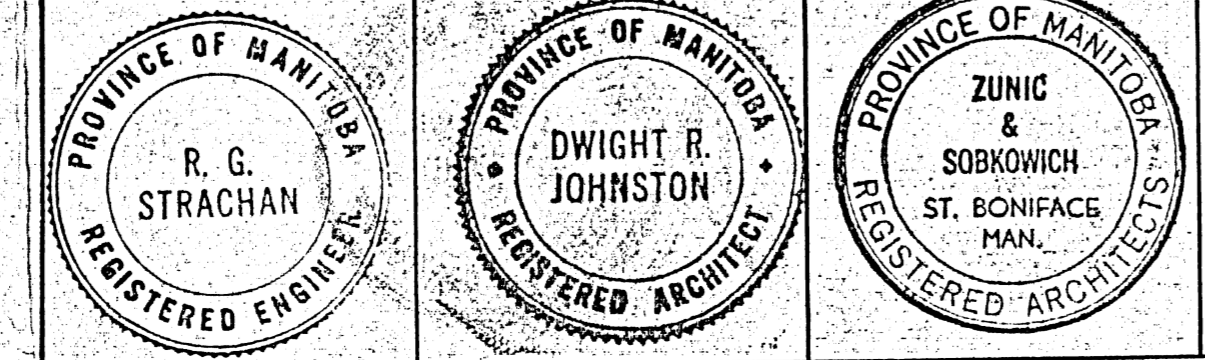
PANEL 'K' SECT. 2 (42 ckt)

LIGHTING	8 - 15 AMP. 1POLE	43, 46, 48, 50, 51, 53, 58, 59
RECEPT.	6 - 15 "	44, 47, 49, 52, 54, 55
MOTORS	3 - 15 "	45, 54, 57
SPARES	6 - 15 "	60-65
SPACES	19	66-84

TIME CLOCKS
 CIRCUITS - K1, 2, 4 & 5 CONTROLLED BY A PARAGON # 4700752 TIME CLOCK, MTD. ADJACENT TO TNL 'K'
 CIRCUIT - K6 CONTROLLED BY A PARAGON # 4002-05K TIME CLOCK MTD. ADJACENT TO TNL 'K'
 CIRCUITS - K3, 58, 59, 62, 64, 55 INSTALL LOW-VOLTAGE RELAYS ADJACENT TO TNL'S RELAYS TO BE CONTROLLED BY A TOKK # 1807 ZSK MOMENTARY CONTACT TIME CLOCK. CLOCK MTD. ADJACENT TO TNL 'K'

B-14 FILE
 RETURN TO CIVIC PROPERTIES BUILDING INVENTORY.
 3 67 2

KRUSE & ASSOCIATES ENGINEERS
 CONSULTING ENGINEERS
 1700 ELLICE AVE. WINNIPEG 21, MAN.
 PHONE 786-3441



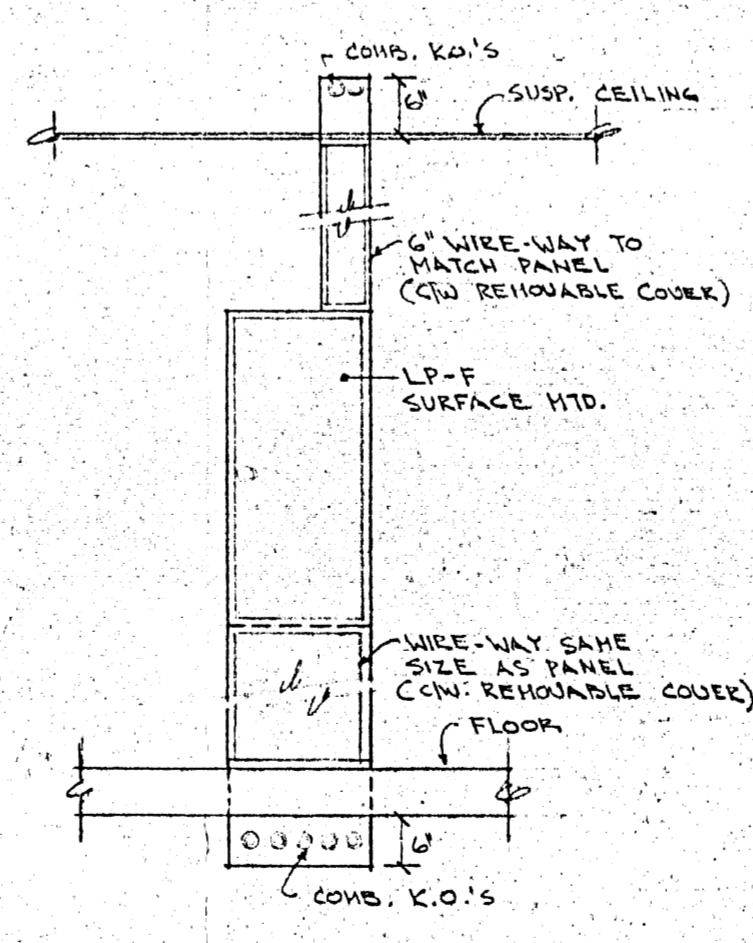
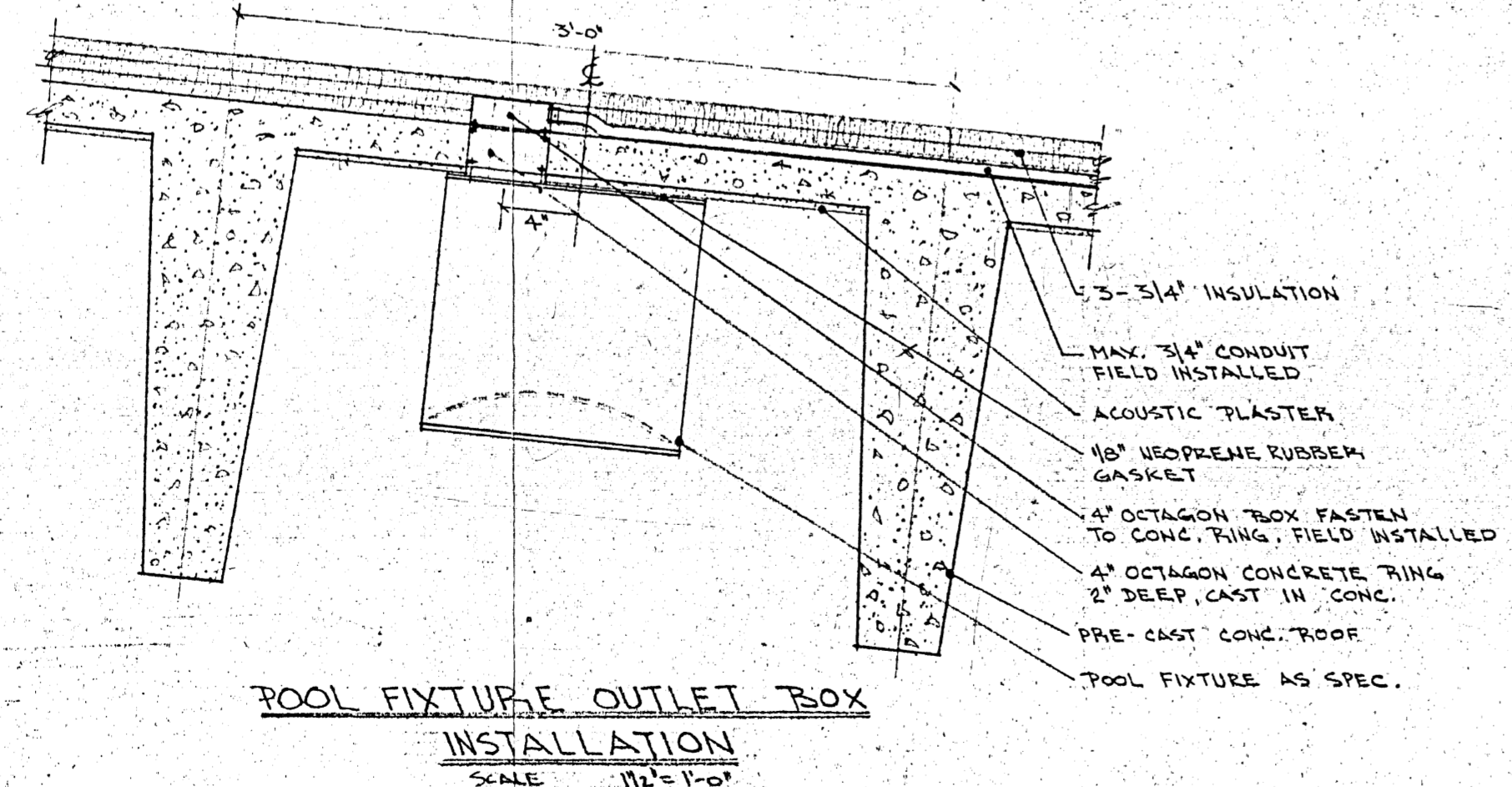
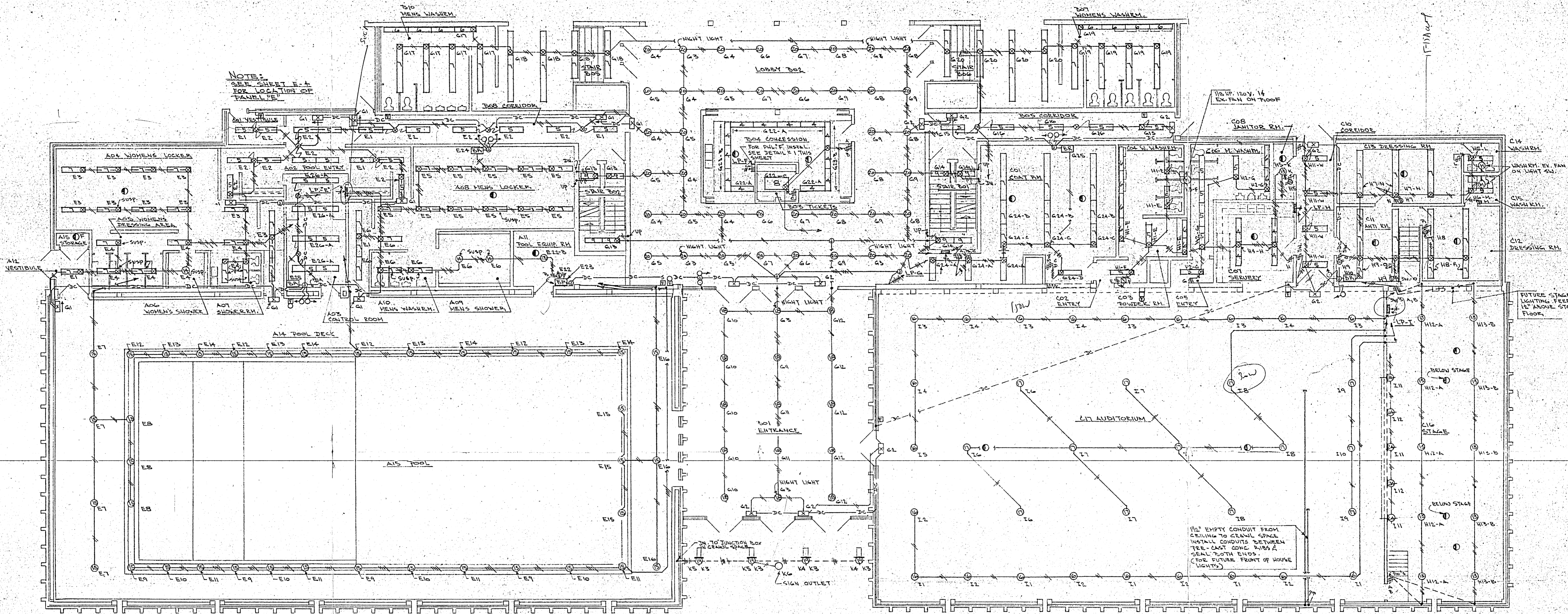
ZUNIC & SOBKOWICH ARCHITECTS
 DWIGHT R. JOHNSTON
 204-309 TACHE AVE. ST. BONIFACE MAN.
 1854 PORTAGE AVE. ST. JAMES MAN.

REVISIONS			
NO.	DESCRIPTION	BY	DATE

DRAWN BY: L. BARTH
 CHECKED BY: R.S.
 DATE: JUN 11 1965

ST. JAMES CIVIC CENTRE
 NESS AVENUE & WOODLAWN STREET
 CITY OF SAINT JAMES, MANITOBA

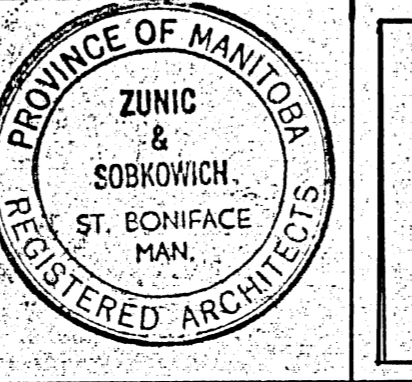
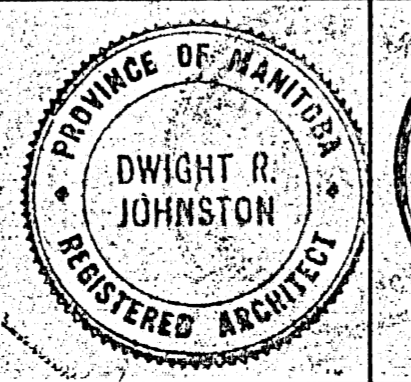
DRAWING NUMBER: E-2
 TITLE: BASEMENT FLOOR PLAN



NOTE: ENTRANCE BOY AND AUD. ST. LIGHTING OUTLET BOXES SAME INSTALLATION, EXCEPT OUTLET BOX TO BE INSTALLED IN CENTRE OF PRE-CAST CONC. RIBS

B-14
FILE
RETURN TO CIVIC
PROPERTIES BUILDING
INVENTORY.
3 67 2

KRUSE & ASSOCIATES
CONSULTING ENGINEERS
1700 ELLICE AVE. WINNIPEG 21, MAN.
PHONE 786-3441



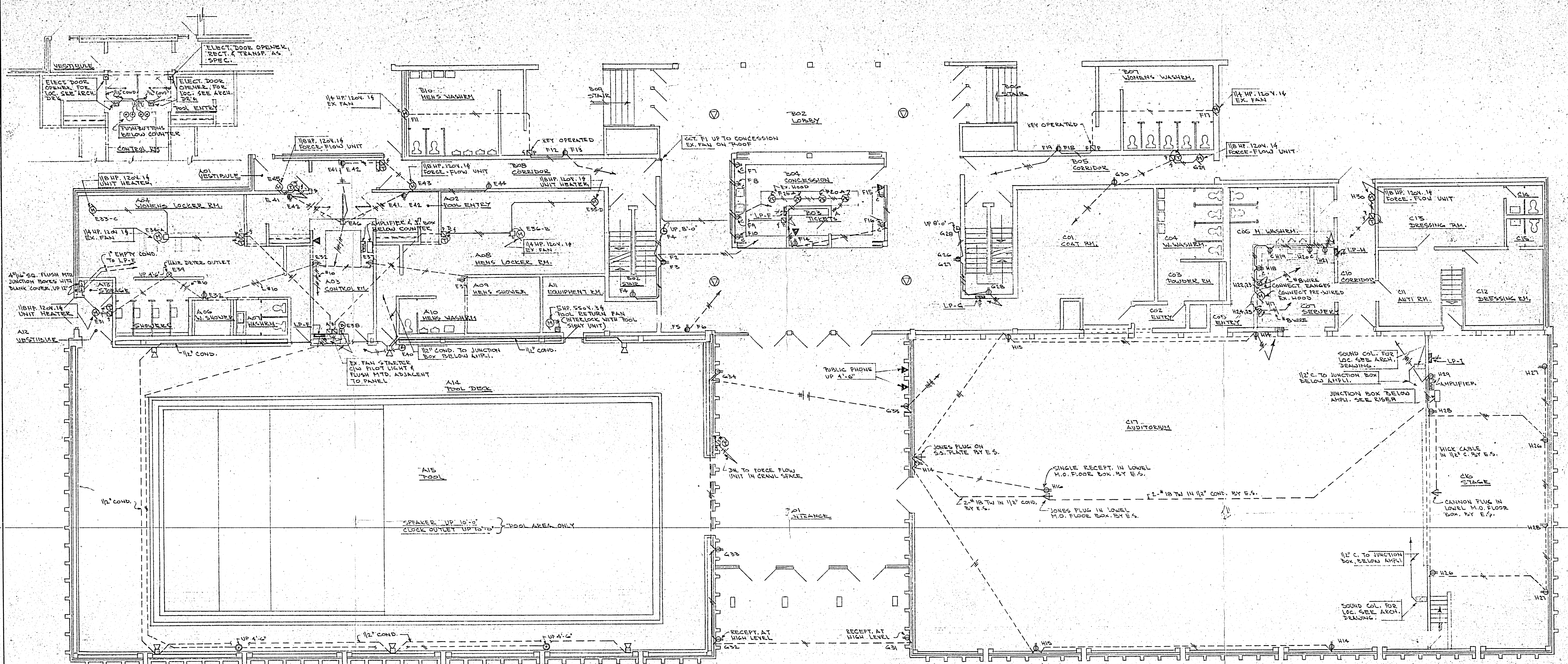
ZUNIC & SOBKOWICH
DWIGHT R. JOHNSTON
ARCHITECTS
204-309 TACHE AVE. ST. BONIFACE MAN.
1854 PORTAGE AVE. ST. JAMES MAN.

REVISIONS		
NO.	DESCRIPTION	BY DATE

DRAWN BY: L. BARTHA
CHECKED BY: R.G.S.
DATE: JUN 1 1965

ST. JAMES CIVIC CENTRE
NESS AVENUE & WOODLAWN STREET
CITY OF SAINT JAMES, MANITOBA

DRAWING NUMBER: E-3
TITLE: MAIN FL. FRONT LIGHTING PLAN



PANEL BREAKER SCHEDULE

PANEL "E" SECT. 1 (30 CCT.)

LIGHTING	17 - 15AMP. 1POLE	CCT. # 1-16, 26
LIGHTS & RECEPT.	1 - 15 " "	" # 22
BAT. UNITS	3 - 15 " "	" # 23, 24, 25
ENTRANCE WADING POOL	5 - 15 " "	" # 17-21
SPARES	4 - 15 " "	" # 27-30

PANEL "E" SECT. 2 (30 CCT.)

MOTORS	7 - 15AMP. 1POLE	CCT. # 31, 33-36, 43, 45
RECEPT.	4 - 15 " "	" # 32, 37, 40, 44
POOL ALARM	1 - 15 " 2POLE	" # 41-42
L-VOLTAGE TRANSF.	1 - 15 " "	" # 46
HAIR DRYER	1 - 30 " "	" # 39
SPARES	6 - 15 " "	" # 47-52
SPACES	8 - 1POLE	" # 53-60

PANEL "F" (42 CCT.)

LIGHTING	1 - 15AMP. 1POLE	CCT. # 20
RECEPT.	8 - 15 " "	" # 4, 7-10, 14-16
MOTORS	3 - 15 " 1POLE	" # 2, 3, 5-6, 12-13, 18-19
SPACES	26 - 1POLE	" # 21-42

PANEL "G" (42 CCT.)

LIGHTING	23 - 15AMP. 1POLE	CCT. # 1-20, 22-24
BAT. UNIT	1 - 15 " "	" # 25
RECEPT.	4 - 15 " "	" # 28, 30-32
MOTOR	1 - 15 " 2POLE	" # 26-27
SPARES	6 - 15 " 1POLE	" # 21, 33-37
SPACES	5 - 1POLE	" # 38-42

PANEL "H" (42 CCT.)

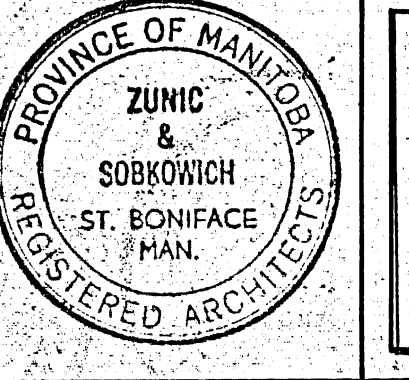
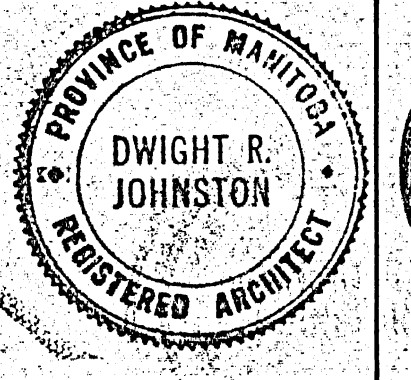
LIGHTING	6 - 15AMP. 1POLE	CCT. # 1, 2, 4, 11, 12, 13
LIGHTS & RECEPT.	5 - 15 " "	" # 5-9
RECEPT.	11 - 15 " "	" # 14-16, 18-21, 26-29
BAT. UNIT	1 - 15 " "	" # 10
RANGES	2 - 40 " 2POLE	" # 22-23, 24-25
MOTORS	3 - 15 " 1POLE	" # 3, 17, 30
SPARES	5 - 15 " "	" # 31-35
SPACES	7 - 1POLE	" # 36-42

PANEL "I" (30 CCT.)

LIGHTING	12 - 15AMP. 1POLE	CCT. # 1-12
SPARES	5 - 15 " "	" # 13-17
SPACES	13 - 1POLE	" # 18-30

**B-14
FILE**
RETURN TO CIVIC
PROPERTIES BUILDING
INVENTORY.
3 67 2

**KRUSE & ASSOCIATES
CONSULTING ENGINEERS**
1700 ELLICE AVE. WINNIPEG 21, MAN.
PHONE 786-3441



**ZUNIC & SOBKOWICH
DWIGHT R. JOHNSTON
ARCHITECTS**
204-309 TACHE AVE. ST. BONIFACE MAN.
1854 PORTAGE AVE. ST. JAMES MAN.

REVISIONS		
NO.	DESCRIPTION	BY DATE

DRAWN BY: L. BARTY
CHECKED BY: RGS
DATE: JUN 7 1 1965

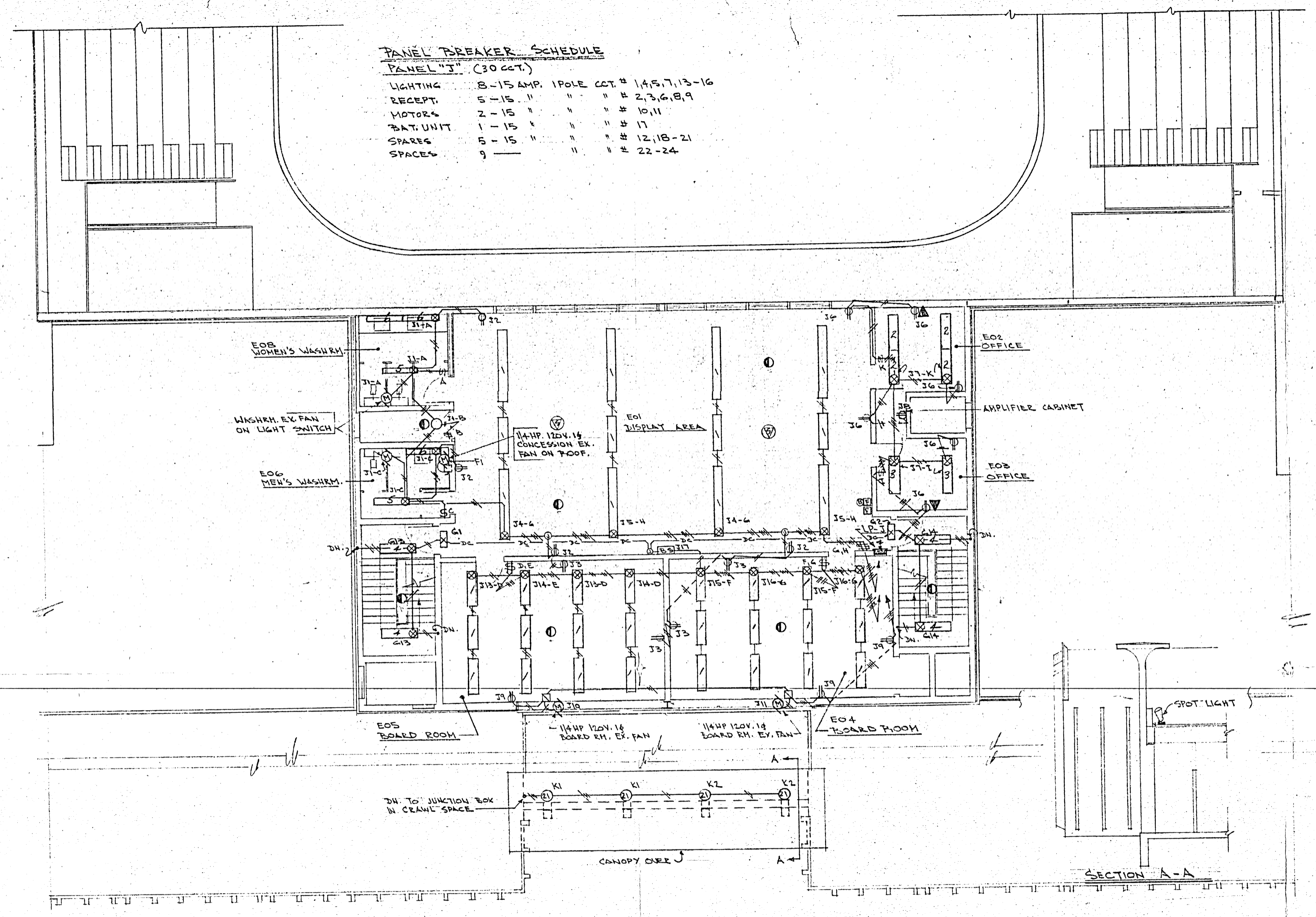
ST. JAMES CIVIC CENTRE
NESS AVENUE & WOODLAWN STREET
CITY OF SAINT JAMES, MANITOBA

DRAWING NUMBER: E-4
TITLE: MAIN FL. FRONT POWER PLAN

PANEL BREAKER SCHEDULE

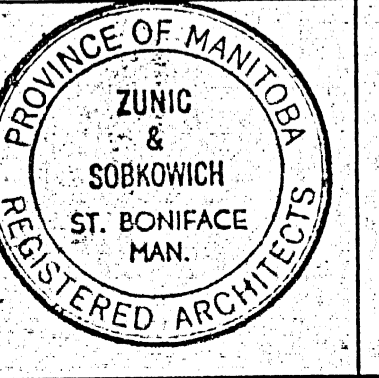
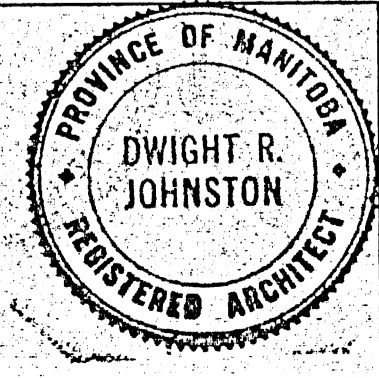
PANEL "J" (30 Ckt.)

LIGHTING	8-15 AMP. 1 POLE Ckt. #	1, 4, 5, 7, 13-16
RECEPT	5-15 " " "	2, 3, 6, 8, 9
MOTORS	2-15 " " "	10, 11
BAT. UNIT	1-15 " " "	17
SPARES	5-15 " " "	12, 18-21
SPACES	9 " " "	22-24



B-14
FILE
RETURN TO CIVIC
PROPERTIES BUILDING
INVENTORY.
3 | 67 | 2

KRUSE & ASSOCIATES
CONSULTING ENGINEERS
1700 ELLICE AVE. WINNIPEG 21, MAN.
PHONE 786-3441



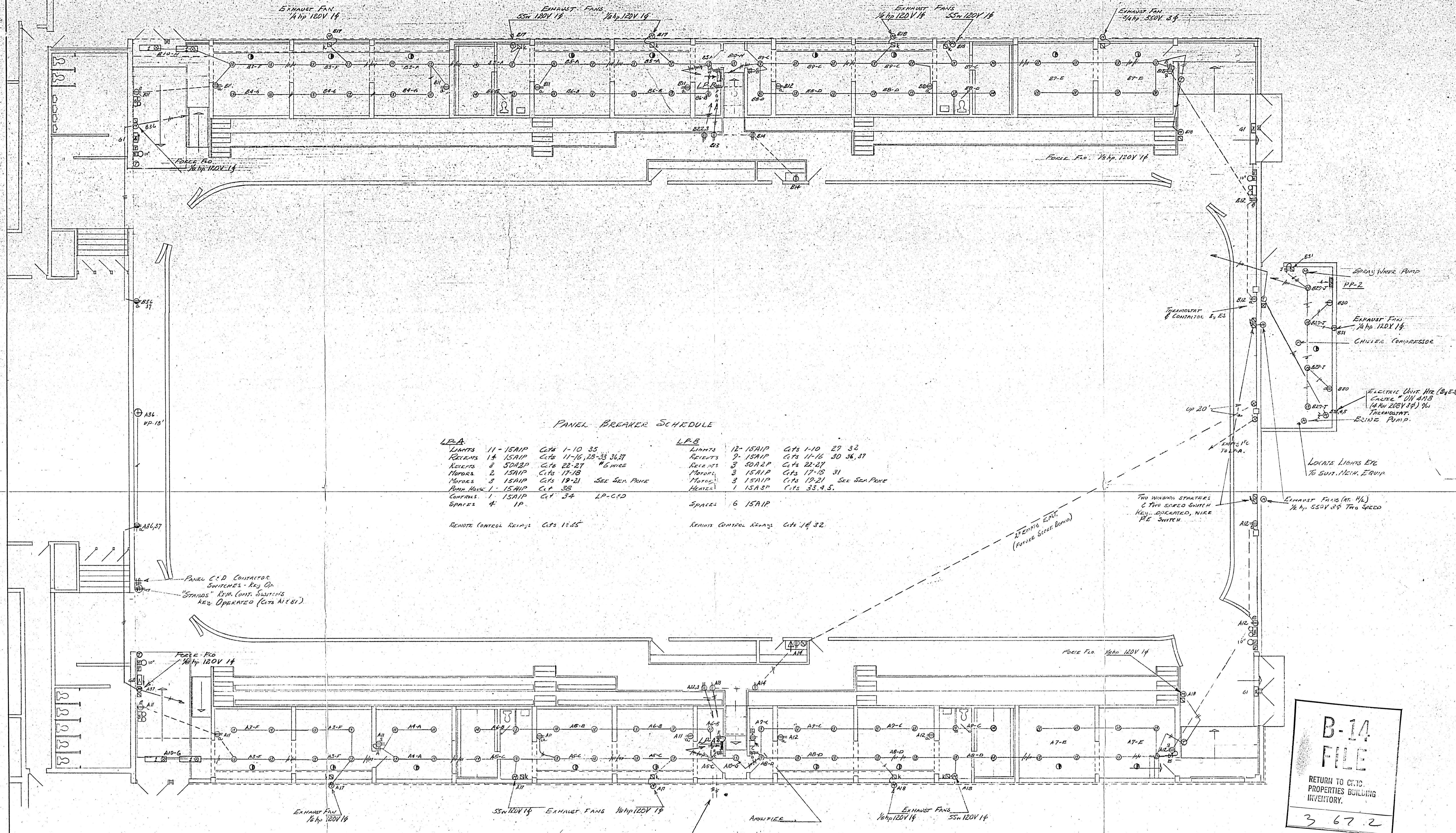
ZUNIC & SOBKOWICH
DWIGHT R. JOHNSTON
ARCHITECTS
204-309 TACHE AVE. ST. BONIFACE MAN.
1854 PORTAGE AVE. ST. JAMES MAN.

REVISIONS		
NO.	DESCRIPTION	BY DATE

DRAWN BY: L. BARTH
CHECKED BY: R. G. S.
DATE: JUN 11 1965

ST. JAMES CIVIC CENTRE
NESS AVENUE & WOODLAWN STREET
CITY OF SAINT JAMES, MANITOBA

DRAWING NUMBER: E-5
TITLE: MEZZANINE FLOOR PLAN

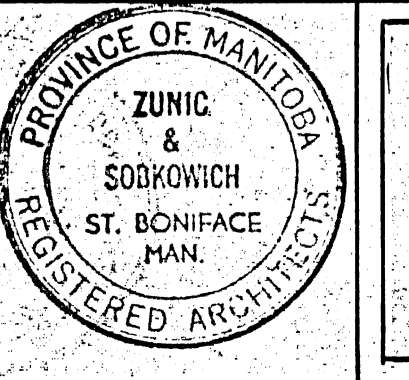
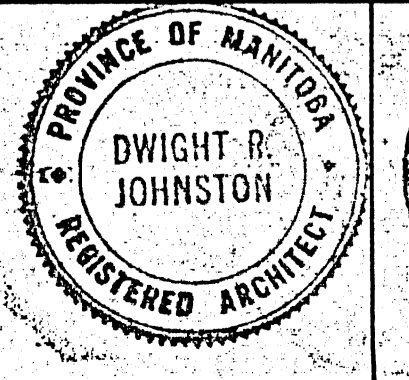
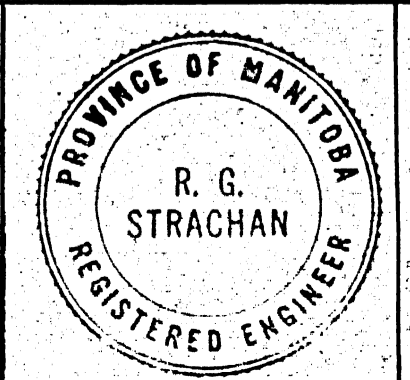


PANEL BREAKER SCHEDULE

L.P.A.	L.P.B.
LIGHTS 11-15AIP Cts 1-10 35	LIGHTS 12-15AIP Cts 1-10 29 32
RELEASERS 14 15AIP Cts 11-16, 28-33 36, 37	RELEASERS 9-15AIP Cts 11-16 30 36, 37
MOTORS 2 50A2P Cts 22-27 1/2 MINS	RELEASERS 3 50A2P Cts 22-27
MOTORS 3 15AIP Cts 17-18 SEE GEN. PRINTE	MOTORS 3 15AIP Cts 17-18 31
PUMP HOUSE 1 15AIP Cts 33	MOTORS 1 15AIP Cts 19-21 SEE GEN. PRINTE
CONTROLS 1 15AIP Cts 34 LP-CED	HEATED 1 15AIP Cts 33, 4, 5.
SPACES 4 1P	SPACES 6 15AIP
REMOTE CONTROL RELAYS Cts 17, 55	REMOTE CONTROL RELAYS Cts 17, 32

B-14
FILE
 RETURN TO CIVIC
 PROPERTIES BUILDING
 INVENTORY.
 3 67.2

KRUSE & ASSOCIATES
 CONSULTING ENGINEERS
 1700 ELLICE AVE. WINNIPEG 21, MAN.
 PHONE 786-3441



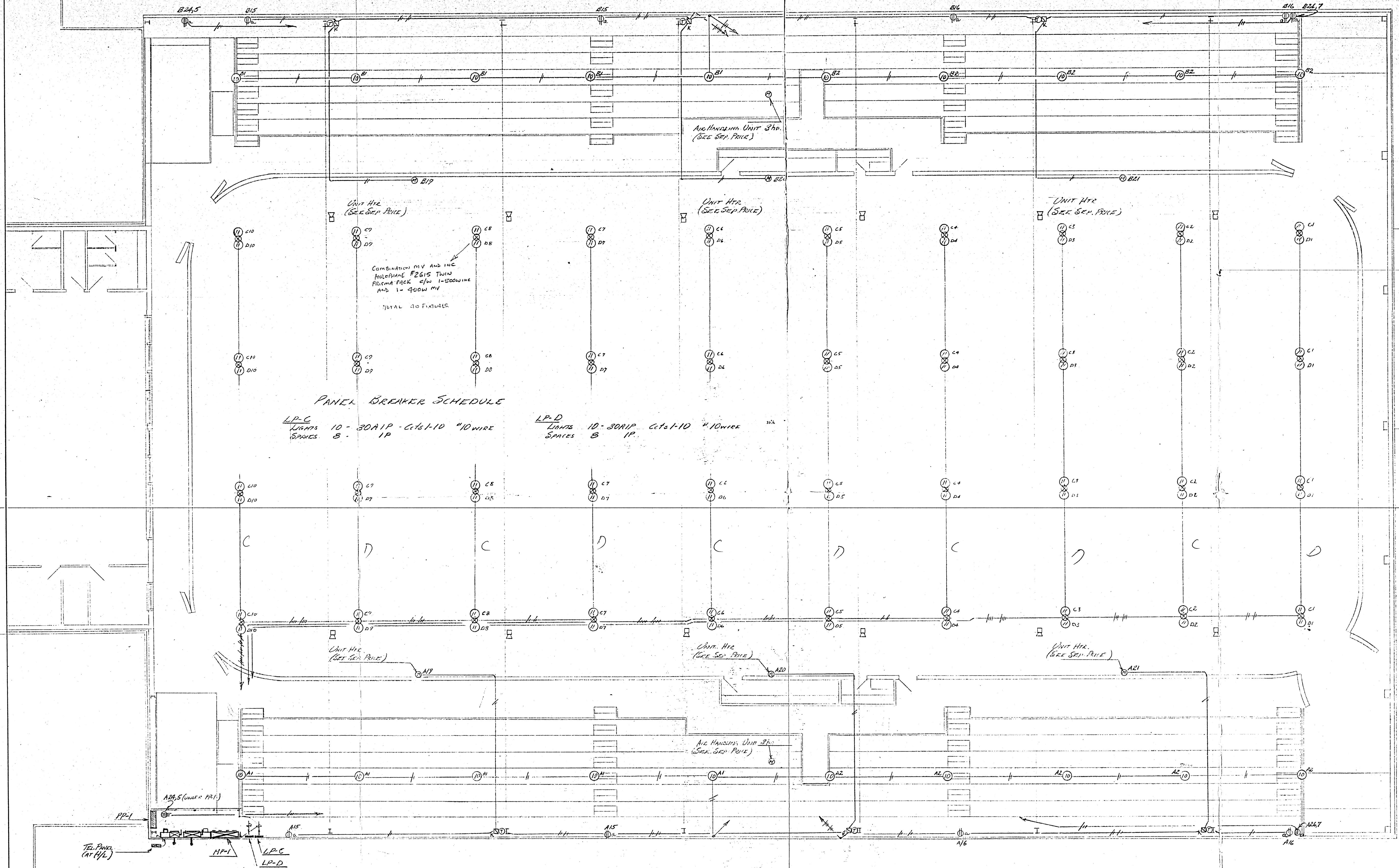
ZUNIC & SOBKOWICH
DWIGHT R. JOHNSTON
 ARCHITECTS
 204-309 TACHE AVE. ST. BONIFACE MAN.
 1854 PORTAGE AVE. ST. JAMES MAN.

REVISIONS		
NO.	DESCRIPTION	BY DATE

DRAWN BY: R.S.
 CHECKED BY: R.S.
 DATE: JUN 11 1965

ST. JAMES CIVIC CENTRE
 NISS AVENUE & WOODLAWN STREET
 CITY OF SAINT JAMES, MANITOBA

DRAWING NUMBER: **E-6**
 TITLE: **LOWER ARENA PLAN**



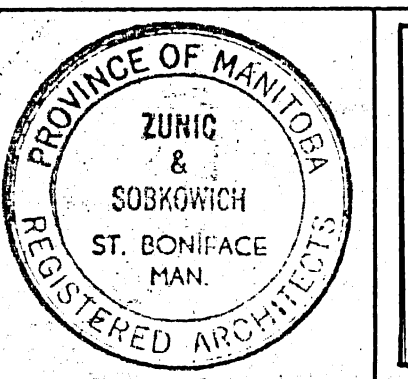
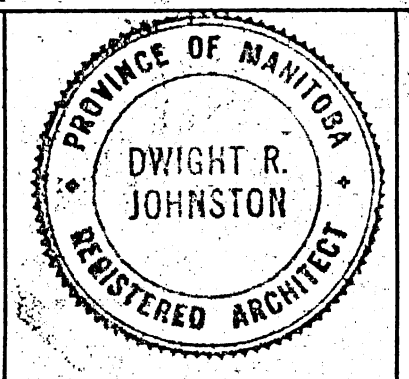
PANEL BREAKER SCHEDULE

LP-C
LIGHTS 10 - 30AIP - C1-1-10 "10 WIRE"
SPACES B - 1P

LP-D
LIGHTS 10 - 30AIP - C1-1-10 "10 WIRE"
SPACES B - 1P

B-14
FILE
RETURN TO OLD
PROPERTIES USE AND
REVISIONS
3 67 2

KRUSE & ASSOCIATES
CONSULTING ENGINEERS
1700 ELLICE AVE. WINNIPEG 21, MAN.
PHONE 786-3441



ZUNIC & SOBKOWICH
DWIGHT R. JOHNSTON
ARCHITECTS
204-309 TACHE AV. ST. BONIFACE MAN.
1854 PORTAGE AVE. ST. JAMES MAN.

REVISIONS		
NO.	DESCRIPTION	BY DATE

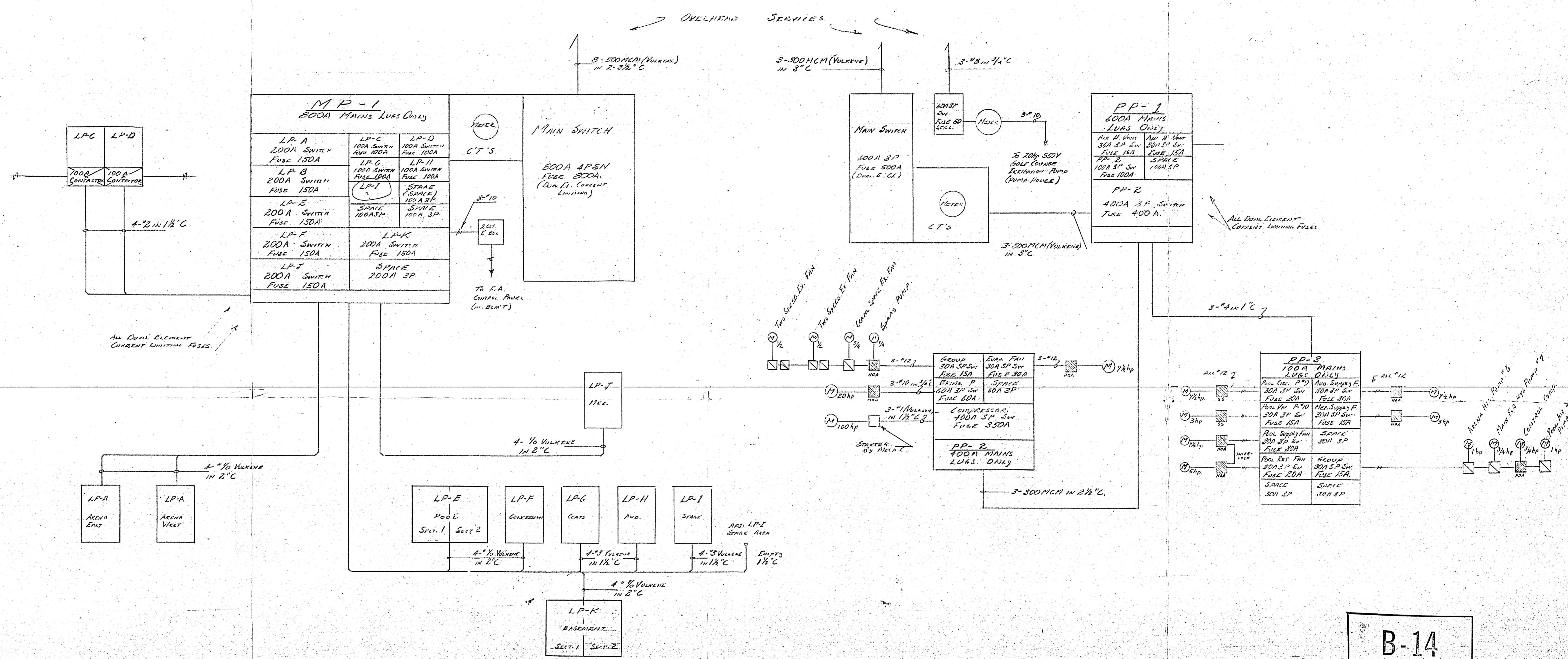
DRAWN BY:
R.G.S.

CHECKED BY:
R.G.S. - N.S.

DATE:
JUN 11 1965

ST. JAMES CIVIC CENTRE
NESS AVENUE & WOODLAWN STREET
CITY OF SAINT JAMES, MANITOBA

DRAWING NUMBER: **E-7**
TITLE:
UPPER ARENA PLAN

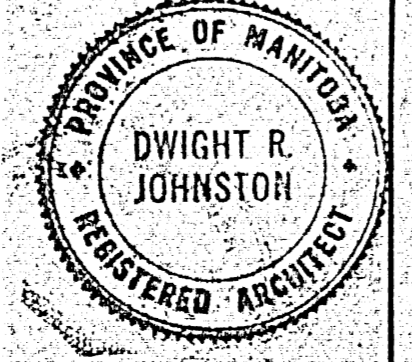


DISTRIBUTION RISER.
120/208 VOLT 3 PHASE 4 CONDUCTOR
N.T.S.

DISTRIBUTION RISER
600 VOLT 3 PHASE 3 CONDUCTOR
N.T.S.

B-14
FILE
RETURN TO CIVIC
PROPERTIES BUILDING
INVENTORY.
3672

K. RUSE & ASSOCIATES
CONSULTING ENGINEERS
1700 ELLICE AVE. WINNIPEG 21, MAN.
PHONE 786-3441



ZUNIC & SOBKOWICH
DWIGHT R. JOHNSTON
ARCHITECTS
204-309 TACHE AVE. ST. BONIFACE MAN.
1854 PORTAGE AVE. ST. JAMES MAN.

REVISIONS			
NO.	DESCRIPTION	BY	DATE

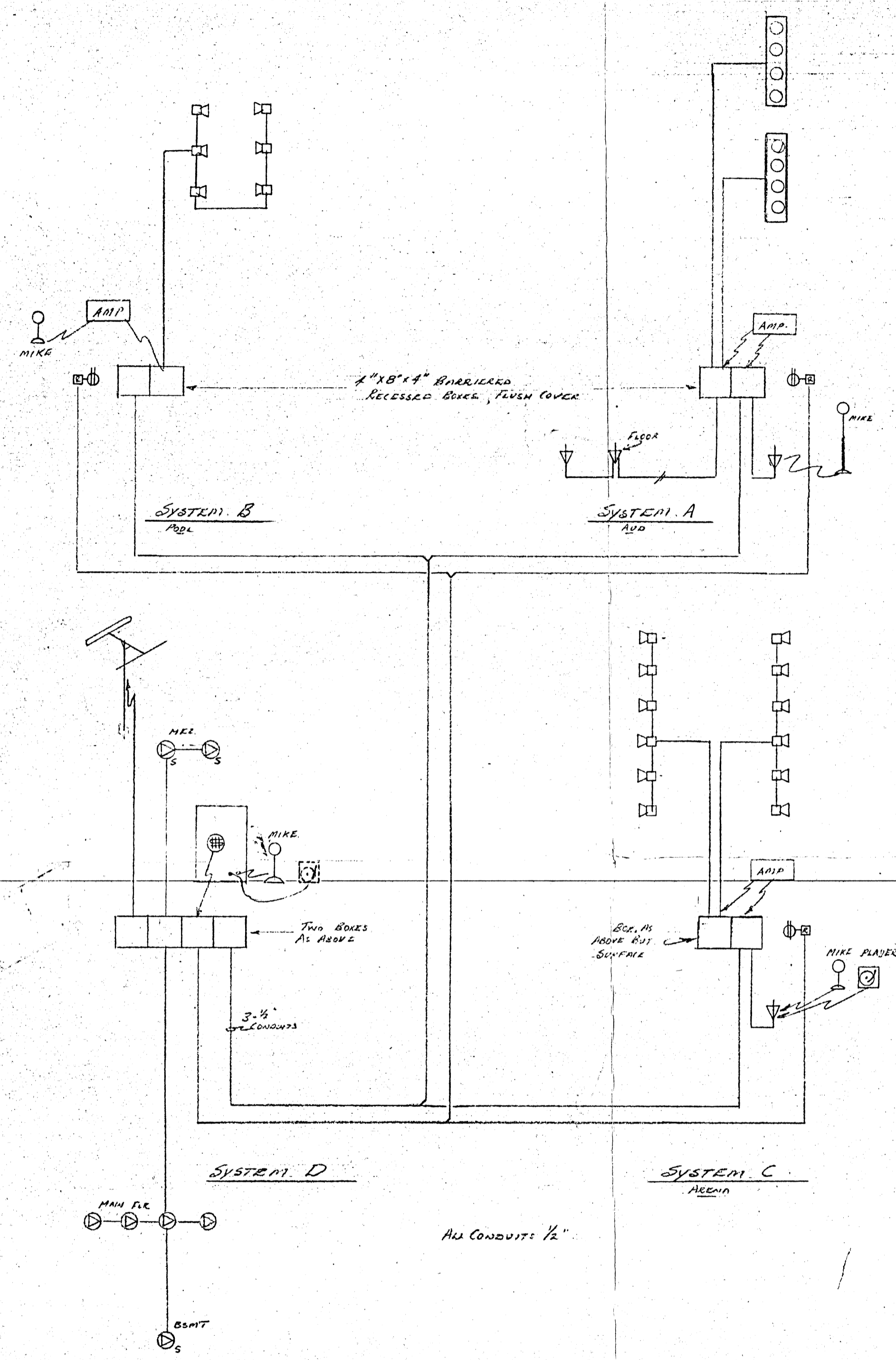
DRAWN BY:
R.G.S.
CHECKED BY:
R.G.S.
DATE:
JUL 1 1965

ST. JAMES CIVIC CENTRE
NESS AVENUE & WOODLAWN STREET
CITY OF SAINT JAMES, MANITOBA

DRAWING NUMBER: E-8
TITLE: RISER DIAGRAMS

FIXTURE SCHEDULE

ELECTRICAL SYMBOLS



SOUND SYSTEM RISER.
N.T.S.

FLUORESCENT

- ☐ Surface mounted - Electrolite #KAC-70-248 (Belmont) c/w 2-40W RS lamps.
- ☐ 1' x 4' recessed troffer - Electrolite #KEA-34-248 c/w 2-40W RS lamps.
- ☐ Electrolite #3
- ☐ As above but with 3-40W RS lamps.
- ☐ 1' x 4' recessed troffer - Electrolite #KFP-34-248 c/w 2-40W RS lamps.
- ☐ Dropped opal shielding.
- ☐ 8" x 4' recessed troffer - Electrolite #KFP-47-148 c/w 1-40W RS lamp.
- ☐ Dropped opal shielding.
- ☐ Wall mounted - Electrolite #KP-1081 series single lamp, length as indicated.
- ☐ Strip - Electrolite #K-201-48, or length as indicated, single lamp, suspended where indicated or as necessary.
- ☐ Surface mounted - Electrolite #KAC-70-448 (Belmont) c/w 4-40W RS lamps.
- ☐ Surface mounted - Electrolite #KFP-40-236 c/w 2-30W RS lamps (Note 3' long)

INCANDESCENT

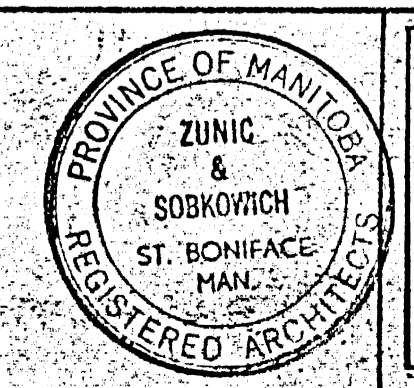
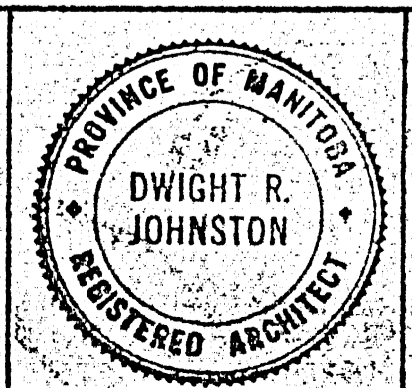
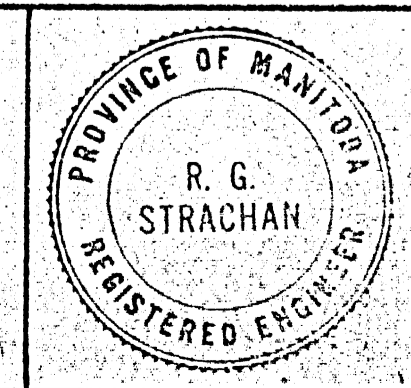
- ⓪ Holophane #682 c/w 300W 1F. lamp - suspended bottom to same level as U/S of truss.
- ⓪ Combination Mercury vapour and incandescent. Holophane #2615 twin prism-pack c/w 1-500W 1F incandescent lamp and 1-400W MV lamp (colour corrected). Suspend as above.
- ⓪ Wall bracket - Holophane #480 c/w 300W 1F lamp, mount as indicated.
- ⓪ RIM standard dome reflector - Benjamin #3703 and 3713, c/w 150W 1F lamp, surface mounted or suspended where indicated.
- ⓪ Vapour Proof shower light - Art Metal #3374 c/w 150W 1F lamp, surface mounted or suspended where indicated.
- ⓪ Holophane #2566-CA special see detail.
- ⓪ Modulite #M205 c/w 150W R40 FL lamp and louvre.
- ⓪ Modulite similar to above but 9" diameter, 12" high, c/w 300W R40 FL lamp and louvre.
- ⓪ Modulite #M111 c/w 200W PS-30 1F lamp
- ⓪ Modulite similar to M111 but 9" diameter c/w 150W PAR FL lamp down and 300W PAR 5" Med. FL up (on swivel) - all weatherproofed.
- ⓪ Spot lights, Mold Cast #MA1566 c/w 300W PAR56 MED, FL. Mount fixtures on roof, on a 3" continuous steel channel, welded to 4"x18" steel plates (at right angles) at 2' OC. Support is not fixed to roof.
- ⓪ Pot Lights - Electrolite P-142 c/w 150W R-40 lamp and louvre.
- ⓪ Porcelain holder with 100W 1F lamp.
- ⓪ Porcelain holder with 100W 1F lamp & wire guard.
- ⓪ Open spot - Swivelier #82 with two 150W R40 FL Lamps
- ⓪ Vapour proof. Grouse Head's VVB 105 with 100W 1F lamp & VVB SWIDS Box - Mount in exhaust Hood.
- ⓪ Exit light. Moldcast 401 Series. Wall, Ceiling, End or Pendant mounted as indicated, Arrows as indicated.
- ⓪ Third socket with 25W DC lamp where indicated.
- ⓪ Stencil cut fair - 2-25W T6 1/2 Lamps - recessed.
- ⓪ Down light

- ☐ Standard flush toggle switch, SS #1-4601, 15A 120 V 1 P
- ☐ As above, but 3-way 1-4603
- ☐ As above, but 2 pole 1-4602
- ☐ As all above, but with 110 V pilot light, red jewel
- ☐ Two toggle switches, ganged
- ☐ Key operated switch
- ☐ Low voltage remote control switch, G.E. RFS-6
- ☐ Two above ganged
- ☐ Key operated switch, G.E. RKS-6
- ☐ Low voltage remote control relay, G.E. RR-3 mounted in outlet box
- ☐ Low voltage transformer for above
- ☐ Duplex receptacle, S.S. 1144, 15A, 125V
- ☐ - Adjacent letter indicates mounting condition as follows
- ☐ - Letter, mount up 12"
- ☐ - Up 3'-6"
- ☐ - Up 4'-0"
- ☐ Over counter in counter splashback
- ☐ For emergency light, mount up 8'
- ☐ Flush floor mounted, Lowell MO enclosure
- ☐ With spring loaded weatherproof coverplate, Hubble #5211
- ☐ Shower outlet Smith & Stone #1-1470-1
- ☐ Ganged with light switch
- ☐ As above, split wired, two circuits
- ☐ - Mounting condition as above
- ☐ For receptacle, 50A 3P (120/208 - 1 phase) Smith & Stone #4-9306
- ☐ - Mounting condition as above
- ☐ Telephone outlet, mounting condition as above
- ☐ Sound System outlet
- ☐ Recessed ceiling speaker as specified
- ☐ s - surface mounted
- ☐ w - Wall mounted
- ☐ Wall mounted trumpet speaker as specified
- ☐ Disconnect switch
- ☐ Outlet box only
- ☐ Line voltage thermostat
- ☐ Motor ratings as noted, or as indicated below
- ☐ Remote start-stop station, 'p' indicates pilot light
- ☐ Manual motor starter in NEMA 1 enclosure, unless as indicated below
- ☐ k - key operated
- ☐ f - indicates flush
- ☐ w - in NEMA 4 enclosure
- ☐ p - with pilot light
- ☐ Magnetic motor starter
- ☐ Combination magnetic starter
- ☐ Magnetic contactor
- ☐ Fire alarm annunciator
- ☐ Fire alarm bell
- ☐ Manual fire alarm station
- ☐ Automatic fire alarm station - fixed temp.
- ☐ Automatic fire alarm station - fixed temp. and rate of rise
- ☐ Fire alarm control panel
- ☐ Clock hanger outlet, SS-1-1119
- ☐ Pool Emergency alarm push button, maintained contact, A.B. FKB16A,
- ☐ Red mushroom label "Push for Emergency" SS flush cover plate.
- ☐ Low voltage pushbutton
- ☐ Low voltage buzzer
- ☐ Alarm bell - Edwards #340-4" 120V
- ☐ Low voltage transformer
- ☐ Main Panel - M.P.
- ☐ Main Switch
- ☐ Power panel - P.P.
- ☐ Lighting panel - L.P.
- ☐ Telephone panel - T.P.
- ☐ Intercom panel - I.P.
- ☐ Indicates front
- ☐ Emergency lighting unit
- ☐ B = bracket mounted
- ☐ S = Shelf mounted
- ☐ R = wire to remote lamps
- ☐ Remote head for above
- ☐ Conduit run in ceiling or walls. Lines denote conductors
- ☐ Conduit run in floor or lower floor ceiling. Lines as above
- ☐ Arrow indicates home run to panel
- ☐ T indicates telephone run
- ☐ DC indicates DC run
- ☐ 600 indicates 600 V run

AMRC Co
NEDLO
775 4931

B-14
FILE
RETURN TO CIVIC
BUILDING
ST. JAMES
3 67 2

KRUSE & ASSOCIATES
CONSULTING ENGINEERS
1700 ELLICE AVE. WINNIPEG 21, MAN.
PHONE 786-3441



ZUNIC & SOBKOVICH
DWIGHT R. JOHNSTON
ARCHITECTS
304-305 TACHE AVE. ST. BONIFACE MAN.
1834 PORTAGE AVE. ST. JAMES MAN.

REVISIONS		
NO.	DESCRIPTION	BY DATE

DRAWN BY: RGS
CHECKED BY: RGS
DATE: JUL 1 1 1965

ST. JAMES CIVIC CENTRE
NESS AVENUE & WOODLAWN STREET
CITY OF SAINT JAMES, MANITOBA

DRAWING NUMBER: E-9
TITLE: SYMBOLS & SCHEDULES